



RRB GROUP - D **SHIFT - 2** (25-08-2022)

- ★ Latest Govt Job updates
- ★ Private Job updates
- ★ Free Mock tests available

Visit - teachingninja.in

Test Date	25/08/2022
Test Time	12:45 PM - 2:15 PM
Subject	Level 1

*** Note**

Correct Answer will carry 1 mark per Question.
Incorrect Answer will carry 1/3 Negative mark per Question.

- Options shown in green color with a tick icon are correct.
- Chosen option on the right of the question indicates the option selected by the candidate.

Section : Level 1

Q.1 Simplify:

$$(1.5a^2 - 2.5b^2)(1.5a^2 + 2.5b^2) + 6.25ab$$

- Ans
- 1. $2.5a^4 - 6.25b^4 + 6.25ab$
 - 2. $2.25a^4 - 6.25b^4 + 6.25ab$
 - 3. $2.25a^4 - 6.25b^4$
 - 4. $2.25a^4 - 6.5b^4 + 6.25ab$

Question ID : 7518975696

Option 1 ID : 75189722782

Option 2 ID : 75189722781

Option 3 ID : 75189722784

Option 4 ID : 75189722783

Status : **Not Attempted and Marked For Review**

Chosen Option : --

Q.2 In Munnar, a travel company has three 4-seater cars and two 8-seater maxi cabs. The rate of each passenger for a round trip in a car is ₹25 and for a round trip in a maxi cab is ₹20. The average occupancy of the seats is 100%. What is the average earning of each vehicle for one round trip?

- Ans
- 1. ₹125
 - 2. ₹127
 - 3. ₹124
 - 4. ₹126

Question ID : 7518976306

Option 1 ID : 75189725223

Option 2 ID : 75189725221

Option 3 ID : 75189725224

Option 4 ID : 75189725222

Status : **Not Answered**

Chosen Option : --

Q.3 The Modern Periodic Table has _____ groups and _____ periods.

- Ans
- 1. 18, 6
 - 2. 18, 7
 - 3. 17, 8
 - 4. 18, 5

Question ID : 7518973716
Option 1 ID : 75189714863
Option 2 ID : 75189714861
Option 3 ID : 75189714862
Option 4 ID : 75189714864
Status : Answered
Chosen Option : 2

Q.4 Refer to the following letter and number series and answer the question.

(Left) G C 6 8 T 7 D 4 6 K 2 R Y 3 5 E S A 4 T Y 7 8 G T (Right)

If all the numbers are dropped from the series, how many letters are there in the English alphabetical order between the letter that is fourth from the right end and the letter that is sixth from the left end of the given series?

- Ans
- 1. One
 - 2. None
 - 3. Two
 - 4. Three

Question ID : 7518977351
Option 1 ID : 75189729402
Option 2 ID : 75189729401
Option 3 ID : 75189729403
Option 4 ID : 75189729404
Status : Answered
Chosen Option : 2

Q.5 Consider the below statements and identify the correct answer.

Statement-I: The chemical formula for baking soda is $\text{CaSO}_4 \cdot \frac{1}{2} \text{H}_2\text{O}$.

Statement-II: Baking soda is used for making toys, materials for decoration and for making surfaces smooth

- Ans
- 1. Both the statements are true.
 - 2. Statement-II is true, and Statement-I is false.
 - 3. Both the statements are false.
 - 4. Statement-I is true, and Statement-II is false.

Question ID : 7518973673
Option 1 ID : 75189714689
Option 2 ID : 75189714692
Option 3 ID : 75189714690
Option 4 ID : 75189714691
Status : Answered
Chosen Option : 3

Q.6 An object, 3.0 cm in height, is placed at a distance of 20.0 cm in front of a convex mirror of focal length 6.0 cm, on its principal axis. Its image has a height of _____ and is _____.

- Ans**
- ✓ 1. less than 3.0 cm, erect
 - ✗ 2. more than 3.0 cm, inverted
 - ✗ 3. more than 3.0 cm, erect
 - ✗ 4. less than 3.0 cm, inverted

Question ID : 7518976587
Option 1 ID : 75189726345
Option 2 ID : 75189726348
Option 3 ID : 75189726346
Option 4 ID : 75189726347
Status : Answered
Chosen Option : 1

Q.7 Select the set in which the numbers are related in the same way as are the numbers of the following sets.

(NOTE: Operations should be performed on the whole numbers, without breaking down the numbers into its constituent digits. E.g. 13 – Operations on 13 such as adding/subtracting/multiplying etc. to 13 can be performed. Breaking down 13 into 1 and 3 and then performing mathematical operations on 1 and 3 is not allowed.)

(5, 21, 2)

(7, 33, 4)

- Ans**
- ✗ 1. (6, 40, 8)
 - ✗ 2. (10, 93, 3)
 - ✓ 3. (8, 51, 9)
 - ✗ 4. (11, 24, 3)

Question ID : 7518977401
Option 1 ID : 75189729603
Option 2 ID : 75189729604
Option 3 ID : 75189729601
Option 4 ID : 75189729602
Status : Not Answered
Chosen Option : --

Q.8 Identify the INCORRECT statement from among the following.

- Ans**
- ✗ 1. A freely suspended bar magnet points in north-south direction.
 - ✗ 2. Outside a bar magnet, the magnetic field lines are directed from north to south pole.
 - ✓ 3. A number of field lines intersect at a given point inside a magnetic field.
 - ✗ 4. Repulsion is a sure test of magnetism.

Question ID : 7518975513
Option 1 ID : 75189722050
Option 2 ID : 75189722049
Option 3 ID : 75189722052
Option 4 ID : 75189722051
Status : Answered
Chosen Option : 3

Q.9 Sujlam started from a point facing towards the west, turned left and walked for 10 m, then turned right and walked for 12 m, then turned left and walked for 11 m, and then turned left again at point P and walked for 17 m. Prior to turning left at point P, he was facing in which direction?

(All turns are 90 degree turns only)

- Ans**
- 1. West
 - 2. North
 - 3. South
 - 4. East

Question ID : 7518974844
Option 1 ID : 75189719374
Option 2 ID : 75189719375
Option 3 ID : 75189719376
Option 4 ID : 75189719373
Status : Answered
Chosen Option : 3

Q.10 The following table shows the break-up of the costs (in ₹) incurred by a company in the production of five products, A to E. Study the table and answer the question.

Product	A	B	C	D	E
Raw material	400	200	700	300	400
Manufacturing	80	40	150	80	100
Advertisement	180	70	200	170	200
Labour	200	180	400	140	250
Miscellaneous	40	10	50	10	50
Total cost	900	500	1500	700	1000

Which of the following products has the maximum manufacturing cost in comparison to its total cost of production?

- Ans**
- 1. C
 - 2. B
 - 3. D
 - 4. A

Question ID : 7518977433
Option 1 ID : 75189729731
Option 2 ID : 75189729730
Option 3 ID : 75189729732
Option 4 ID : 75189729729
Status : Answered
Chosen Option : 3

Q.11 If $++$ means $-$, $-$ means \times , \times means $++$ and $++$ means $++$, what will come in place of the question mark (?) in the following equation?

$$24 + 16 \div 132 \times 11 - 3 = ?$$

- Ans**
- 1. 42
 - 2. 40
 - 3. 46
 - 4. 44

Question ID : 7518977415
Option 1 ID : 75189729658
Option 2 ID : 75189729657
Option 3 ID : 75189729660
Option 4 ID : 75189729659
Status : Answered
Chosen Option : 4

Q.12 Which of the following excretory products is stored in the old xylem of the plants?

- Ans
- 1. Carbon dioxide
 - 2. Resin
 - 3. Citric acid
 - 4. Morphin

Question ID : 7518974358
Option 1 ID : 75189717431
Option 2 ID : 75189717429
Option 3 ID : 75189717432
Option 4 ID : 75189717430
Status : Answered
Chosen Option : 2

Q.13 As per Article 243B of the Indian Constitution, Panchayats at the intermediate level may NOT be constituted in a State having a population not exceeding _____.

- Ans
- 1. 25 lakhs
 - 2. 5 lakhs
 - 3. 20 lakhs
 - 4. 10 lakhs

Question ID : 7518974304
Option 1 ID : 75189717216
Option 2 ID : 75189717213
Option 3 ID : 75189717215
Option 4 ID : 75189717214
Status : Answered
Chosen Option : 4

Q.14 If the selling price of an almirah is doubled, profit is tripled. Find the profit percentage.

- Ans
- 1. 25%
 - 2. 10%
 - 3. 100%
 - 4. 50%

Question ID : 7518975625
Option 1 ID : 75189722498
Option 2 ID : 75189722497
Option 3 ID : 75189722500
Option 4 ID : 75189722499
Status : Answered
Chosen Option : 3

Q.15 Who was the founder of the social reform movement for Sikhism - the Nirankari movement?

- Ans
- 1. Baba Gurmeet Dev
 - 2. Shri Sohan Singh
 - 3. Baba Balak Singh
 - 4. Baba Dyal Das

Question ID : 7518974174
Option 1 ID : 75189716695
Option 2 ID : 75189716693
Option 3 ID : 75189716694
Option 4 ID : 75189716696
Status : Not Answered
Chosen Option : --

Q.16 The S.I unit of resistivity is:

- Ans
- 1. ohm m
 - 2. ohm
 - 3. ohm/m
 - 4. mho

Question ID : 7518975461
Option 1 ID : 75189721843
Option 2 ID : 75189721841
Option 3 ID : 75189721844
Option 4 ID : 75189721842
Status : Answered
Chosen Option : 1

Q.17 In a certain code language, MUTINY is written as 25149202113 and MAGIC is written as 397113. How will NECTAR be written in the same language?

- Ans
- 1. 181203514
 - 2. 182203614
 - 3. 191253014
 - 4. 182103513

Question ID : 7518975247
Option 1 ID : 75189720988
Option 2 ID : 75189720986
Option 3 ID : 75189720985
Option 4 ID : 75189720987
Status : Answered
Chosen Option : 1

Q.18 The Longest Moustache competition is held at which of the following festivals/fairs?

- Ans**
- 1. Kila Raipur Sports Festival
 - 2. Hornbill Festival
 - 3. Pushkar Fair
 - 4. Thrissur Pooram Festival

Question ID : 7518977181
Option 1 ID : 75189728724
Option 2 ID : 75189728721
Option 3 ID : 75189728722
Option 4 ID : 75189728723
Status : Answered
Chosen Option : 4

Q.19 Which of the following numbers will replace the question mark (?) in the given series?

23, 31, 95, 311, ?

- Ans**
- 1. 818
 - 2. 876
 - 3. 832
 - 4. 823

Question ID : 7518977391
Option 1 ID : 75189729563
Option 2 ID : 75189729564
Option 3 ID : 75189729561
Option 4 ID : 75189729562
Status : Answered
Chosen Option : 4

Q.20 How many such pairs of letters are there in the word 'DEVELOP' (in both forward and backward directions) each of which have as many letters between them in the word as there are in the English alphabetical order?

- Ans**
- 1. 3
 - 2. 2
 - 3. 1
 - 4. 4

Question ID : 7518974981
Option 1 ID : 75189719923
Option 2 ID : 75189719922
Option 3 ID : 75189719921
Option 4 ID : 75189719924
Status : Answered
Chosen Option : 2

Q.21 According to Dobereiner, _____.

- Ans
- 1. the sum of atomic masses of the first and the third elements of the triad is equal to that of the second element
 - 2. the sum of atomic masses of the first and the second elements of the triad is equal to that of the third element
 - 3. the arithmetical mean of the atomic masses of the first and the third elements of the triad is equal to that of the second one
 - 4. the arithmetical mean of the atomic masses of the second and the third elements of the triad is equal to that of the first one

Question ID : 7518973500
Option 1 ID : 75189713999
Option 2 ID : 75189713997
Option 3 ID : 75189714000
Option 4 ID : 75189713998
Status : Answered
Chosen Option : 3

Q.22

National Women's Day is celebrated on which date in India?

- Ans
- 1. 23 January
 - 2. 13 January
 - 3. 23 February
 - 4. 13 February

Question ID : 7518973797
Option 1 ID : 75189715186
Option 2 ID : 75189715185
Option 3 ID : 75189715188
Option 4 ID : 75189715187
Status : Answered
Chosen Option : 3

Q.23 Select the option that is related to the fifth letter-cluster in the same way as the second letter-cluster is related to the first letter-cluster and the fourth letter-cluster is related to the third letter-cluster.

FINE : GKQI :: MOST : NQVX :: SEAL : ?

- Ans**
- 1. PGTD
 - 2. TGPD
 - 3. TPGD
 - 4. TGDP

Question ID : 7518974850
Option 1 ID : 75189719398
Option 2 ID : 75189719400
Option 3 ID : 75189719397
Option 4 ID : 75189719399
Status : Answered
Chosen Option : 4

Q.24 Identify the sportsperson who received the Major Dhyan Chand Khel Ratna Award 2021 in the wrestling discipline from the following options.

- Ans**
- 1. Nishad Kumar
 - 2. Sharad Kumar
 - 3. Ravi Kumar
 - 4. Suhash Yathiraj

Question ID : 7518976462
Option 1 ID : 75189725848
Option 2 ID : 75189725845
Option 3 ID : 75189725846
Option 4 ID : 75189725847
Status : Not Attempted and Marked For Review
Chosen Option : --

Q.25 In which of the following period do the monsoon winds tentatively reach Punjab, Western Uttar Pradesh and Haryana during a normal monsoon year?

- Ans**
- 1. First week of May
 - 2. First week of June
 - 3. First week of August
 - 4. First week of July

Question ID : 7518974259
Option 1 ID : 75189717036
Option 2 ID : 75189717033
Option 3 ID : 75189717035
Option 4 ID : 75189717034
Status : Answered
Chosen Option : 4

Q.26 The angles of a quadrilateral are in the ratio 2: 5: 7: 10. Find the difference between the greatest and the smallest angles of the quadrilateral.

- Ans
- 1. 50°
 - 2. 120°
 - 3. 180°
 - 4. 60°

Question ID : 7518976209
Option 1 ID : 75189724834
Option 2 ID : 75189724835
Option 3 ID : 75189724836
Option 4 ID : 75189724833
Status : Answered
Chosen Option : 2

Q.27 The headquarters of Central Institute of Indian Languages (CIIL) is situated in _____.

- Ans
- 1. Chennai
 - 2. Pondicherry
 - 3. Bengaluru
 - 4. Mysuru

Question ID : 7518977190
Option 1 ID : 75189728760
Option 2 ID : 75189728759
Option 3 ID : 75189728757
Option 4 ID : 75189728758
Status : Answered
Chosen Option : 3

Q.28 In how much time will a sum of money double itself at 10 per cent per annum rate of simple interest?

- Ans
- 1. 12 years
 - 2. 8 years
 - 3. 5 years
 - 4. 10 years

Question ID : 7518975615
Option 1 ID : 75189722459
Option 2 ID : 75189722458
Option 3 ID : 75189722460
Option 4 ID : 75189722457
Status : Answered
Chosen Option : 4

Q.29 Sardar Sarovar Dam was constructed in Gujarat over the _____.

- Ans
- 1. Sutlej River
 - 2. Ganga River
 - 3. Narmada River
 - 4. Mahanadi River

Question ID : 7518974501
Option 1 ID : 75189718004
Option 2 ID : 75189718001
Option 3 ID : 75189718003
Option 4 ID : 75189718002
Status : Answered
Chosen Option : 1

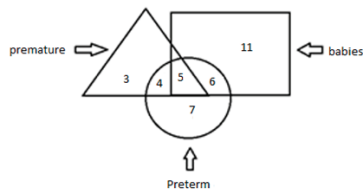
Q.30 Which of the following numbers will replace the question mark (?) in the given series?

8, 17, 33, 63, 114, 193, ?

- Ans
- 1. 307
 - 2. 370
 - 3. 377
 - 4. 347

Question ID : 7518977383
Option 1 ID : 75189729531
Option 2 ID : 75189729529
Option 3 ID : 75189729530
Option 4 ID : 75189729532
Status : Not Attempted and Marked For Review
Chosen Option : --

Q.31 Study the given diagram carefully and answer the question. The numbers in different sections indicate the number of persons.



How many such babies are there who are NEITHER premature NOR preterm?

- Ans
- 1. 5
 - 2. 4
 - 3. 6
 - 4. 11

Question ID : 7518977316
Option 1 ID : 75189729262
Option 2 ID : 75189729261
Option 3 ID : 75189729263
Option 4 ID : 75189729264
Status : Answered
Chosen Option : 4

Q.32 Which of the following method(s) can be used to change the direction of force on a current carrying conductor?

- (i) Changing the magnitude of current
- (ii) Changing the strength of magnetic field
- (iii) Changing the direction of current

Ans 1. Only (i)
 2. Both (ii) and (iii)
 3. Both (i) and (iii)
 4. Only (iii)

Question ID : 7518975526
Option 1 ID : 75189722101
Option 2 ID : 75189722104
Option 3 ID : 75189722103
Option 4 ID : 75189722102
Status : Answered
Chosen Option : 4

Q.33 The average age of Raj and his sister is 8 years. If Raj's age is 10 years, then find the age of his sister.

Ans 1. 7 years
 2. 6 years
 3. 9 years
 4. 8 years

Question ID : 7518975938
Option 1 ID : 75189723750
Option 2 ID : 75189723751
Option 3 ID : 75189723752
Option 4 ID : 75189723749
Status : Answered
Chosen Option : 2

Q.34 In January 2022, with which university did Jio sign a pact for undertaking research and standardisation related activities in 6G technology?

Ans 1. Barcelona Institute of Science and Technology
 2. University of Oulu, Finland
 3. Indian Institute of Science Bengaluru
 4. Canadian Institute of Health Research

Question ID : 7518973780
Option 1 ID : 75189715120
Option 2 ID : 75189715119
Option 3 ID : 75189715118
Option 4 ID : 75189715117
Status : Answered
Chosen Option : 1

Q.35 A decision is given followed by two statements I and II. Read all the information carefully and select the correct option.

Decision:

In order to promote tourism, Country W is declaring 20 of its cities as Heritage Sites.

Statements:

I. 4 of the 20 cities are located in hilly areas and have limited access to transport.

II. In the past whenever a city in Country W has been promoted for tourism, it has led to increased employment opportunities in that city.

Ans 1. Both statements I and II weaken the decision

2.

Statement I weakens the decision and statement II strengthens the decision

3.

Statement I is a neutral statement and statement II strengthens the decision

4. Both statements I and II strengthen the decision

Question ID : 7518976761
Option 1 ID : 75189727043
Option 2 ID : 75189727042
Option 3 ID : 75189727044
Option 4 ID : 75189727041
Status : Answered
Chosen Option : 2

Q.36 In this question, a group of letters is coded using numbers as per the table given below and the conditions which follow. The correct combination of codes following the conditions is your answer.

Letter/ Symbol	I	L	M	H	Y	O	C	E	R
Code	4	5	9	1	2	3	6	7	8

Conditions:

(i) If the first element is a vowel and the last, a consonant, the codes for these two (the first and the last elements) are to be interchanged.

(ii) If the first element is a consonant and the last, an vowel, the first and last elements are to be coded as 0.

(iii) If both the second and the fifth elements are vowels, the fifth element is to be coded as the code for the second element and vice-versa.

Question: EICHER

Ans 1. 814767

2. 876417

3. 877416

4. 876147

Question ID : 7518977365
Option 1 ID : 75189729458
Option 2 ID : 75189729457
Option 3 ID : 75189729460
Option 4 ID : 75189729459
Status : Not Attempted and
Marked For Review
Chosen Option : --

Q.37 How many such pairs of letters are there in the word 'ABILITY' (in both forward and backward directions) each of which have as many letters between them in the word as there are in the English alphabetical order?

- Ans
- 1. 1
 - 2. 3
 - 3. 2
 - 4. 4

Question ID : 7518974982
Option 1 ID : 75189719925
Option 2 ID : 75189719927
Option 3 ID : 75189719926
Option 4 ID : 75189719928
Status : Answered
Chosen Option : 1

Q.38 There are four prime numbers taken in ascending order. The product of the first three prime numbers is 1771 and the sum of the last two prime numbers is 82. What is the product of the last two prime numbers?

- Ans
- 1. 1357
 - 2. 1127
 - 3. 1537
 - 4. 1387

Question ID : 7518976246
Option 1 ID : 75189724981
Option 2 ID : 75189724983
Option 3 ID : 75189724982
Option 4 ID : 75189724984
Status : Not Attempted and Marked For Review
Chosen Option : --

Q.39 Convert $0.2\overline{36}$ into a vulgar fraction.

- Ans
- 1. $\frac{7}{33}$
 - 2. $\frac{9}{44}$
 - 3. $\frac{13}{55}$
 - 4. $\frac{17}{66}$

Question ID : 7518976235
Option 1 ID : 75189724940
Option 2 ID : 75189724939
Option 3 ID : 75189724938
Option 4 ID : 75189724937
Status : Answered
Chosen Option : 3

Q.40 Which of the following is the quadratic equation whose roots are -2 and 4 ?

- Ans
- 1. $3x^2 - 5x - 24 = 0$
 - 2. $2x^2 - 6x - 24 = 0$
 - 3. $3x^2 - 6x - 24 = 0$
 - 4. $3x^2 - 6x - 20 = 0$

Question ID : 7518975733
Option 1 ID : 75189722930
Option 2 ID : 75189722929
Option 3 ID : 75189722931
Option 4 ID : 75189722932
Status : Answered
Chosen Option : 3

Q.41 Which structure is responsible for maintaining the amount of water in amoeba?

- Ans
- 1. Contractile vacuole
 - 2. Food vacuole
 - 3. Cytoplasm
 - 4. Plasma membrane

Question ID : 7518974604
Option 1 ID : 75189718414
Option 2 ID : 75189718415
Option 3 ID : 75189718416
Option 4 ID : 75189718413
Status : Answered
Chosen Option : 3

Q.42 Where did the first Green Hydrogen Microgrid Project start in 2021?

- Ans
- 1. Maharashtra
 - 2. Kerala
 - 3. Tamil Nadu
 - 4. Andhra Pradesh

Question ID : 7518974148
Option 1 ID : 75189716589
Option 2 ID : 75189716592
Option 3 ID : 75189716591
Option 4 ID : 75189716590
Status : Answered
Chosen Option : 4

Q.43 Select the option that represents the letters that, when placed from left to right in the blanks below, will complete the letter series.

P _ T P _ S _ C T _ R S P C _ P R _ P _ T _ R S

- Ans
- 1. CRPCSPPT
 - 2. CSPCRPTP
 - 3. CRPPTSCP
 - 4. CCPPRST

Question ID : 7518977342
Option 1 ID : 75189729368
Option 2 ID : 75189729365
Option 3 ID : 75189729366
Option 4 ID : 75189729367
Status : Answered
Chosen Option : 3

Q.44

How many times has The Factory Act been amended as on June 2022?

- Ans
- 1. 8
 - 2. 5
 - 3. 4
 - 4. 9

Question ID : 7518973877
Option 1 ID : 75189715507
Option 2 ID : 75189715506
Option 3 ID : 75189715508
Option 4 ID : 75189715505
Status : Not Answered
Chosen Option : --

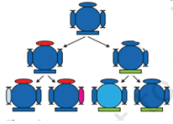
Q.45 If '+' means '-', '-' means 'x', 'x' means '+' and '+' means '+', what will come in place of the question mark (?) in the following equation?

$$28 - 2 + 80 \times 5 \div 14 = ?$$

- Ans
- 1. 45
 - 2. 25
 - 3. 52
 - 4. 54

Question ID : 7518977416
Option 1 ID : 75189729664
Option 2 ID : 75189729663
Option 3 ID : 75189729661
Option 4 ID : 75189729662
Status : Answered
Chosen Option : 4

Q.46 The figure below shows a single organism undergoing reproduction and the progeny with minor differences. What could be the reason for the variation?



- Ans
- 1. Errors in RNA formation
 - 2. Errors in DNA copying
 - 3. Errors in protein formation
 - 4. Gene being non-functional

Question ID : 7518974637
Option 1 ID : 75189718548
Option 2 ID : 75189718546
Option 3 ID : 75189718545
Option 4 ID : 75189718547
Status : Answered
Chosen Option : 2

Q.47 The value of $-48 \div [4 \times (6 - 5 + 1)] \div 24 =$

- Ans
- 1. 12
 - 2. $-\frac{7}{4}$
 - 3. $-\frac{1}{4}$
 - 4. -9

Question ID : 7518975553
Option 1 ID : 75189722209
Option 2 ID : 75189722211
Option 3 ID : 75189722212
Option 4 ID : 75189722210
Status : Answered
Chosen Option : 3

Q.48 Which form of carbon is used as a dry lubricant?

- Ans
- 1. Graphite
 - 2. Diamond
 - 3. Coke
 - 4. Coal

Question ID : 7518973377
Option 1 ID : 75189713508
Option 2 ID : 75189713507
Option 3 ID : 75189713506
Option 4 ID : 75189713505
Status : Answered
Chosen Option : 1

Q.49 Which of the following pairs of numbers is co-prime?

- Ans
- ✓ 1. (17, 23)
 - ✗ 2. (14, 21)
 - ✗ 3. (12, 24)
 - ✗ 4. (15, 25)

Question ID : 7518975814
Option 1 ID : 75189723254
Option 2 ID : 75189723253
Option 3 ID : 75189723255
Option 4 ID : 75189723256
Status : Answered
Chosen Option : 1

Q.50 According to the Constitution of India, in which of the following matters can only Union Legislature make laws?

- Ans
- ✓ 1. Post and Telegram
 - ✗ 2. Prison
 - ✗ 3. Trade and Commerce
 - ✗ 4. Agriculture

Question ID : 7518977276
Option 1 ID : 75189729104
Option 2 ID : 75189729101
Option 3 ID : 75189729102
Option 4 ID : 75189729103
Status : Answered
Chosen Option : 3

Q.51 The difference between two numbers is 42 and they are in the ratio 5 : 3. Find the smaller number.

- Ans
- ✗ 1. 36
 - ✓ 2. 63
 - ✗ 3. 105
 - ✗ 4. 21

Question ID : 7518975918
Option 1 ID : 75189723670
Option 2 ID : 75189723671
Option 3 ID : 75189723669
Option 4 ID : 75189723672
Status : Answered
Chosen Option : 2

Q.52 In this question, a statement is followed by four conclusions. Find out which conclusion is true based on the given statement.

Statement:

$$Q = R > S \leq T < U > V = Z$$

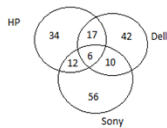
Conclusions:

1. $U > S$
2. $Q < T$
3. $S < V$
4. $Z > U$

Ans 1. 1
 2. 2
 3. 4
 4. 3

Question ID : 7518977332
Option 1 ID : 75189729325
Option 2 ID : 75189729326
Option 3 ID : 75189729328
Option 4 ID : 75189729327
Status : Answered
Chosen Option : 1

Q.53 Study the given diagram carefully and answer the following question. The numbers in different sections indicate the number of persons using different brands of laptop in an IT office.



How many people use both Sony and Dell laptops?

Ans 1. 6
 2. 16
 3. 20
 4. 10

Question ID : 7518974944
Option 1 ID : 75189719773
Option 2 ID : 75189719775
Option 3 ID : 75189719776
Option 4 ID : 75189719774
Status : Answered
Chosen Option : 2

Q.54 Every year, which day is observed as the 'Minorities Rights Day' to uphold the right to freedom and equal opportunities for the ethnic minorities in India and create awareness about the respect and dignity of the minorities?

- Ans**
- 1. 25 December
 - 2. 29 August
 - 3. 18 December
 - 4. 27 February

Question ID : 7518976781
Option 1 ID : 75189727124
Option 2 ID : 75189727122
Option 3 ID : 75189727123
Option 4 ID : 75189727121
Status : Answered
Chosen Option : 1

Q.55 What is the theme selected by RBI as the 2022 theme for Financial Literacy week?

- Ans**
- 1. Credit Discipline and Credit from Formal Institutions
 - 2. Farmers
 - 3. Micro, Small and Medium Enterprises
 - 4. Go Digital, Go Secure

Question ID : 7518973865
Option 1 ID : 75189715457
Option 2 ID : 75189715459
Option 3 ID : 75189715460
Option 4 ID : 75189715458
Status : Answered
Chosen Option : 4

Q.56 The Central Bank of Zimbabwe has been lowering rate of interests of the economy to boost growth. The bank is being _____ in its monetary policy stance.

- Ans**
- 1. Neutral
 - 2. dovish
 - 3. Accommodative
 - 4. hawkish

Question ID : 7518976818
Option 1 ID : 75189727272
Option 2 ID : 75189727269
Option 3 ID : 75189727271
Option 4 ID : 75189727270
Status : Answered
Chosen Option : 3

Q.57 Babu took some quantity of dilute nitric acid in a test tube and heated the test tube at 70°C for about 10 minutes. What was its effect on the pH of nitric acid?

- Ans**
- 1. It decreased
 - 2. It rose up
 - 3. It first increased and then decreased
 - 4. It remained constant

Question ID : 7518973465
Option 1 ID : 75189713858
Option 2 ID : 75189713857
Option 3 ID : 75189713860
Option 4 ID : 75189713859
Status : Answered
Chosen Option : 2

Q.58 Four different experiments were conducted by students of Class X.

I. Navin took a beaker containing some aqueous solution of CuSO_4 and added a piece of magnesium strip in it.

II. Ayush took a beaker containing some aqueous solution of CuSO_4 and added some platinum pieces in it.

III. Sneha took a beaker containing some aqueous solution CuSO_4 and added some copper turnings in it.

IV. Akriti took a beaker containing some aqueous solution CuSO_4 and added a piece of silver wire in it.

Who among them was able to perform a displacement reaction?

- Ans**
- 1. Sneha
 - 2. Akriti
 - 3. Ayush
 - 4. Navin

Question ID : 7518973434
Option 1 ID : 75189713736
Option 2 ID : 75189713735
Option 3 ID : 75189713733
Option 4 ID : 75189713734
Status : Answered
Chosen Option : 4

Q.59

As per the Ministry of New And Renewable Energy, which state has the highest wind power potential as on March 2021?

Ans

1. Rajasthan

2. Karnataka

3. Tamil Nadu

4. Gujarat

Question ID : 7518973900
Option 1 ID : 75189715599
Option 2 ID : 75189715600
Option 3 ID : 75189715598
Option 4 ID : 75189715597
Status : **Marked For Review**
Chosen Option : 3

Q.60 Crop production does NOT involve considerable costs on which of the following?

Ans

1. Costs on seeds

2. Costs on fertilizers

3. Costs on pesticides

4. Costs on animal food

Question ID : 7518974055
Option 1 ID : 75189716217
Option 2 ID : 75189716218
Option 3 ID : 75189716219
Option 4 ID : 75189716220
Status : **Answered**
Chosen Option : 4

Q.61 Five students - 1, 2, 3, 4 and 5 - are sitting around a circular table facing the centre. 4 is sitting to the immediate right of 1 and immediate left of 2. 5 is sitting second to the left of 1. Which of the following statements is true?

Ans

1. 5 is sitting third to the right of 3.

2. 1 is the immediate neighbour of 5.

3. 2 is sitting between 4 and 1.

4. 3 is sitting between 5 and 1.

Question ID : 7518977290
Option 1 ID : 75189729157
Option 2 ID : 75189729158
Option 3 ID : 75189729160
Option 4 ID : 75189729159
Status : **Answered**
Chosen Option : 4

Q.62 Pole E is to the north of pole U and east of pole R. Pole N is to the west of pole U and east of pole I. Pole J is to the south of pole I. What is the position of pole R with respect to pole U?

- Ans
- 1. South
 - 2. South-west
 - 3. North
 - 4. North-west

Question ID : 7518977369
Option 1 ID : 75189729474
Option 2 ID : 75189729475
Option 3 ID : 75189729473
Option 4 ID : 75189729476
Status : Answered
Chosen Option : 4

Q.63 The ratio of the sum of all the interior angles to an exterior angle of a regular polygon is 24: 1. Find the number of sides of the polygon.

- Ans
- 1. 80
 - 2. 78
 - 3. 10
 - 4. 8

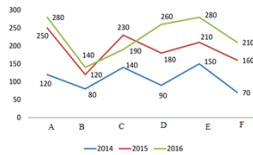
Question ID : 7518976200
Option 1 ID : 75189724797
Option 2 ID : 75189724798
Option 3 ID : 75189724799
Option 4 ID : 75189724800
Status : Not Attempted and Marked For Review
Chosen Option : --

Q.64 Chlorine gas reacts with potassium iodide solution to form potassium chloride and iodine. This reaction is an example of a:

- Ans
- 1. combination reaction
 - 2. double displacement reaction
 - 3. displacement reaction
 - 4. decomposition reaction

Question ID : 7518973583
Option 1 ID : 75189714329
Option 2 ID : 75189714330
Option 3 ID : 75189714332
Option 4 ID : 75189714331
Status : Answered
Chosen Option : 3

Q.65 The following line graph shows the number of admissions of students (in thousands) in six different districts, A, B, C, D, E and F, in three consecutive years, 2014, 2015 and 2016. Study the graph and answer the question.



What is the difference between the total number of admissions in district B for the given three years and the total number of admissions in district E for the first two consecutive years (2014 and 2015)?

- Ans
- 1. 25
 - 2. 20
 - 3. 40
 - 4. 80

Question ID : 7518977424
 Option 1 ID : 75189729696
 Option 2 ID : 75189729694
 Option 3 ID : 75189729695
 Option 4 ID : 75189729693
 Status : Answered
 Chosen Option : 2

Q.66 Simplify: $(1 + \tan^2 \theta)(1 - \sin \theta)(1 + \sin \theta)$.

- Ans
- 1. 0
 - 2. 1
 - 3. 2
 - 4. -1

Question ID : 7518976000
 Option 1 ID : 75189723998
 Option 2 ID : 75189723999
 Option 3 ID : 75189724000
 Option 4 ID : 75189723997
 Status : Answered
 Chosen Option : 3

Q.67 Find the fourth proportional of $4a + 7$, $11a + 3$ and $6a$, if $a = 2$.

- Ans
- 1. 25
 - 2. 15
 - 3. 30
 - 4. 20

Question ID : 7518976063
 Option 1 ID : 75189724251
 Option 2 ID : 75189724249
 Option 3 ID : 75189724252
 Option 4 ID : 75189724250
 Status : Answered
 Chosen Option : 4

Q.68 A, B, C, D, E, F and G want to play a video game they purchased together. Each will get it on one day of the same week starting from Monday and ending on Sunday. No one gets it on same day of the week. A will play on Sunday. D will play immediately before A. B will play immediately after E. E will play on Wednesday. C will not get it on Monday. F gets it on a day between B and D. On which day will G get to play?

- Ans**
- 1. Saturday
 - 2. Friday
 - 3. Thursday
 - 4. Monday

Question ID : 7518974723
Option 1 ID : 75189718892
Option 2 ID : 75189718889
Option 3 ID : 75189718890
Option 4 ID : 75189718891
Status : Answered
Chosen Option : 4

Q.69 Find the double of the lower limit of the modal class in the given data.

CI	100-110	110-120	120-130	130-140	140-150
F	12	15	32	34	22

- Ans**
- 1. 68
 - 2. 280
 - 3. 260
 - 4. 540

Question ID : 7518975681
Option 1 ID : 75189722722
Option 2 ID : 75189722721
Option 3 ID : 75189722723
Option 4 ID : 75189722724
Status : Answered
Chosen Option : 3

Q.70 Find the third proportional of 18 and 54.

- Ans**
- 1. 172
 - 2. 121
 - 3. 162
 - 4. 144

Question ID : 7518976060
Option 1 ID : 75189724240
Option 2 ID : 75189724237
Option 3 ID : 75189724239
Option 4 ID : 75189724238
Status : Answered
Chosen Option : 2

Q.71 The sex of a person is determined by _____.

Ans 1. the chromosomes present in sperm

2.

the chromosomes present in both sperm and ovum and dietary habits of parents

3. the chromosomes present in ovum

4. the chromosomes present in both sperm and ovum

Question ID : 7518974451

Option 1 ID : 75189717802

Option 2 ID : 75189717804

Option 3 ID : 75189717803

Option 4 ID : 75189717801

Status : Answered

Chosen Option : 1

Q.72 What type of political party system does India have?

Ans 1. Three-party system

2. Multi-party system

3. Two-party system

4. One-party system

Question ID : 7518976562

Option 1 ID : 75189726247

Option 2 ID : 75189726248

Option 3 ID : 75189726246

Option 4 ID : 75189726245

Status : Answered

Chosen Option : 2

Q.73 If a man bought 6 pencils for ₹5, and sold them at 5 pencils for ₹6, then the gain percentage is _____

Ans 1. 43%

2. 44%

3. 42%

4. 41%

Question ID : 7518975627

Option 1 ID : 75189722506

Option 2 ID : 75189722505

Option 3 ID : 75189722507

Option 4 ID : 75189722508

Status : Answered

Chosen Option : 2

Q.74 Find the approximate angle between the minute hand and the hour hand of a 12-hour clock when the time is 9:25.

- Ans**
- 1. 150 degrees
 - 2. 100 degrees
 - 3. 190 degrees
 - 4. 130 degrees

Question ID : 7518976769
Option 1 ID : 75189727074
Option 2 ID : 75189727076
Option 3 ID : 75189727075
Option 4 ID : 75189727073
Status : Answered
Chosen Option : 4

Q.75 A ray of light bends towards the normal while travelling from medium A to medium B. Which of the following statements is/are correct?

- (A) Medium A is optically denser than medium B.
- (B) Speed of light is more in medium A than medium B.
- (C) Refractive index of medium B is more than refractive index of medium A.

- Ans**
- 1. Both B and C
 - 2. Both A and C
 - 3. A, B and C
 - 4. Both A and B

Question ID : 7518975398
Option 1 ID : 75189721590
Option 2 ID : 75189721591
Option 3 ID : 75189721592
Option 4 ID : 75189721589
Status : Answered
Chosen Option : 1

Q.76 How many hydrogen atoms will be added along with one carbon atom in the next member of a homologous series?

- Ans**
- 1. 1
 - 2. 3
 - 3. 2
 - 4. 4

Question ID : 7518973411
Option 1 ID : 75189713641
Option 2 ID : 75189713643
Option 3 ID : 75189713642
Option 4 ID : 75189713644
Status : Answered
Chosen Option : 2

Q.77 Five persons, A, B, C, D and E, are sitting in a straight line. All are facing the north direction. D sits to the immediate left of A. Only two persons are sitting between D and B. C sits second from the extreme right end of the line. Only two persons are sitting between C and E. Who is sitting to the immediate right of E?

- Ans**
- 1. B
 - 2. A
 - 3. D
 - 4. C

Question ID : 7518975139
Option 1 ID : 75189720554
Option 2 ID : 75189720553
Option 3 ID : 75189720556
Option 4 ID : 75189720555
Status : Answered
Chosen Option : 3

Q.78 Select the option that is related to the fifth number in the same way as the second number is related to the first number and the fourth number is related to the third number.

13 : 96 :: 18 : 131 :: 14 : ?

- Ans**
- 1. 100
 - 2. 104
 - 3. 103
 - 4. 102

Question ID : 7518977399
Option 1 ID : 75189729593
Option 2 ID : 75189729596
Option 3 ID : 75189729595
Option 4 ID : 75189729594
Status : Answered
Chosen Option : 3

Q.79 The radius and height of a cylinder are in the ratio 2 : 1 Find its total surface area if curved surface area is 616 m².

- Ans**
- 1. 908 m²
 - 2. 1512 m²
 - 3. 1848 m²
 - 4. 1232 m²

Question ID : 7518975758
Option 1 ID : 75189723029
Option 2 ID : 75189723030
Option 3 ID : 75189723032
Option 4 ID : 75189723031
Status : Answered
Chosen Option : 3

Q.80 A 250-metre long train running at a speed of 100 km/h crosses another train coming from the opposite direction at a speed of 62 km/h in 10 seconds. What is the length of the second train?

- Ans**
- 1. 240 metres
 - 2. 200 metres
 - 3. 230 metres
 - 4. 270 metres

Question ID : 7518976092
Option 1 ID : 75189724368
Option 2 ID : 75189724366
Option 3 ID : 75189724365
Option 4 ID : 75189724367
Status : Answered
Chosen Option : 2

Q.81 In amoeba, the food is taken by the _____.

- Ans**
- 1. mouth
 - 2. movement of cilia
 - 3. entire body surface area
 - 4. movement of flagella

Question ID : 7518974380
Option 1 ID : 75189717517
Option 2 ID : 75189717519
Option 3 ID : 75189717520
Option 4 ID : 75189717518
Status : Answered
Chosen Option : 2

Q.82 Based on the given statement, four conclusions are drawn. Find out which conclusion is NOT true based on the statement.

Statement: $B > F \geq P > L = K \leq W < M$

- Ans**
- 1. $F > K$
 - 2. $L < M$
 - 3. $P = K$
 - 4. $B > L$

Question ID : 7518974770
Option 1 ID : 75189719078
Option 2 ID : 75189719077
Option 3 ID : 75189719079
Option 4 ID : 75189719080
Status : Answered
Chosen Option : 3

Q.83 What is the similarity between fermentation in yeast and anaerobic respiration taking place in muscle cells of humans?

- Ans**
- 1. Take place in mitochondria
 - 2. Lactic acid is formed
 - 3. Ethanol is formed
 - 4. Take place in Cytoplasm

Question ID : 7518974532
Option 1 ID : 75189718125
Option 2 ID : 75189718128
Option 3 ID : 75189718127
Option 4 ID : 75189718126
Status : Answered
Chosen Option : 2

Q.84 An object is placed on the principal axis of a convex lens of focal length 12 cm, at a distance of 18 cm. The magnification produced by the lens is _____ and the image is _____.

- Ans**
- 1. more than 1, inverted
 - 2. less than 1, inverted
 - 3. more than 1, erect
 - 4. less than 1, erect

Question ID : 7518976629
Option 1 ID : 75189726516
Option 2 ID : 75189726514
Option 3 ID : 75189726515
Option 4 ID : 75189726513
Status : Answered
Chosen Option : 1

Q.85 What will come in the place of the question mark (?) in the following equation if '+' and '-' are interchanged and also '×' and '÷' are interchanged?

$$12 - 104 \times 8 + 5 \div 4 = ?$$

- Ans**
- 1. 5
 - 2. 7
 - 3. 9
 - 4. 11

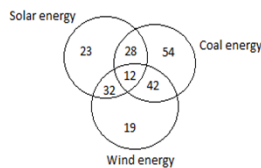
Question ID : 7518977423
Option 1 ID : 75189729689
Option 2 ID : 75189729690
Option 3 ID : 75189729691
Option 4 ID : 75189729692
Status : Answered
Chosen Option : 1

Q.86 Two resistors A and B have resistances 5 ohm and 10 ohm, respectively. If they are connected in series to a voltage source of 5 V. The ratio of power developed in resistor A to that of power developed in resistor B will be:

- Ans
- 1. 2 : 1
 - 2. 4 : 1
 - 3. 1 : 2
 - 4. 1 : 4

Question ID : 7518975499
Option 1 ID : 75189721995
Option 2 ID : 75189721996
Option 3 ID : 75189721993
Option 4 ID : 75189721994
Status : Answered
Chosen Option : 1

Q.87 Study the given diagram carefully and answer the following question. The numbers in different sections indicate the number of persons in a small village relying on different sources of energy for their daily needs.



How many people rely on both Solar energy and Coal energy?

- Ans
- 1. 28
 - 2. 77
 - 3. 40
 - 4. 12

Question ID : 7518974947
Option 1 ID : 75189719785
Option 2 ID : 75189719787
Option 3 ID : 75189719788
Option 4 ID : 75189719786
Status : Answered
Chosen Option : 3

Q.88 With which sport is the Rovers Cup associated?

- Ans
- 1. Rowing
 - 2. Hockey
 - 3. Football
 - 4. Cricket

Question ID : 7518977139
Option 1 ID : 75189728556
Option 2 ID : 75189728554
Option 3 ID : 75189728555
Option 4 ID : 75189728553
Status : Answered
Chosen Option : 2

Q.89 In a queue of boys, there are exactly 8 boys standing between Suraj and Bheem. Suraj is 21st from the front, while Bheem is at the first position from the back. How many total boys are there in the queue?

- Ans**
- 1. 30
 - 2. 32
 - 3. 31
 - 4. 29

Question ID : 7518974721
Option 1 ID : 75189718883
Option 2 ID : 75189718884
Option 3 ID : 75189718882
Option 4 ID : 75189718881
Status : Answered
Chosen Option : 1

Q.90 An amount is divided between two friends in the ratio 2 : 5. If the second part is ₹6 more than the first, then the initial amount is:

- Ans**
- 1. ₹23
 - 2. ₹14
 - 3. ₹12
 - 4. ₹13

Question ID : 7518975707
Option 1 ID : 75189722828
Option 2 ID : 75189722826
Option 3 ID : 75189722825
Option 4 ID : 75189722827
Status : Answered
Chosen Option : 2

Q.91 How many cylinders of radius 10 cm and height 20 cm can be filled with water from a cylinder of radius 20 cm and height 100 cm full of water?

- Ans**
- 1. 30
 - 2. 60
 - 3. 20
 - 4. 40

Question ID : 7518976187
Option 1 ID : 75189724746
Option 2 ID : 75189724748
Option 3 ID : 75189724745
Option 4 ID : 75189724747
Status : Answered
Chosen Option : 3

Q.92

Which of the following parallels of latitude is INCORRECTLY matched with its location?

Ans

- ✓ 1. Tropic of Capricorn - Eastern Hemisphere
- ✗ 2. Arctic Circle - North of the Equator
- ✗ 3. Antarctic Circle - South of the Equator
- ✗ 4. Tropic of Cancer - North Hemisphere

Question ID : 7518973887
Option 1 ID : 75189715546
Option 2 ID : 75189715547
Option 3 ID : 75189715548
Option 4 ID : 75189715545
Status : Answered
Chosen Option : 1

Q.93 _____ played a major role in the revival of Hinduism and the spread of his interpretation of Advaita Vedanta known as 'Neo-Vedanta' in the West.

Ans

- ✗ 1. Sri Ramkrishna Paramhansa
- ✓ 2. Swami Vivekananda
- ✗ 3. Samrat Ashoka
- ✗ 4. Swami Dayanand



Question ID : 7518974199
Option 1 ID : 75189716796
Option 2 ID : 75189716793
Option 3 ID : 75189716795
Option 4 ID : 75189716794
Status : Answered
Chosen Option : 1

Q.94 Two metallic wires A and B are made of the same material. Wire A has length l and radius r while wire B has length $2l$ and radius $2r$. The ratio of the resistance of wire A to that of wire B is:

Ans

- ✓ 1. 2 : 1
- ✗ 2. 4 : 1
- ✗ 3. 1 : 4
- ✗ 4. 1 : 2

Question ID : 7518975471
Option 1 ID : 75189721882
Option 2 ID : 75189721884
Option 3 ID : 75189721883
Option 4 ID : 75189721881
Status : Answered
Chosen Option : 1

Q.95 If a and b are the roots of $x^2 - x - 12 = 0$, and $a > b$, then the quadratic equation in x whose roots are $(2a - 1)$ and $(2b + 1)$ is:

- Ans**
- 1. $x^2 - 2x + 35 = 0$
 - 2. $x^2 - 2x - 35 = 0$
 - 3. $x^2 - 4x - 45 = 0$
 - 4. $x^2 - 4x + 45 = 0$

Question ID : 7518976352
Option 1 ID : 75189725405
Option 2 ID : 75189725406
Option 3 ID : 75189725407
Option 4 ID : 75189725408
Status : Not Answered
Chosen Option : --

Q.96 An object is placed at a distance of 30 cm in front of a concave mirror of focal length 15 cm. The image formed is:

- Ans**
- 1. real and inverted
 - 2. real and erect
 - 3. virtual and inverted
 - 4. virtual and erect

Question ID : 7518976571
Option 1 ID : 75189726282
Option 2 ID : 75189726281
Option 3 ID : 75189726284
Option 4 ID : 75189726283
Status : Answered
Chosen Option : 1

Q.97 Simplify $\sqrt{729} - \sqrt{400}$.

- Ans**
- 1. 8
 - 2. 5
 - 3. 6
 - 4. 7

Question ID : 7518975798
Option 1 ID : 75189723192
Option 2 ID : 75189723189
Option 3 ID : 75189723190
Option 4 ID : 75189723191
Status : Answered
Chosen Option : 4

Q.98 Pesticides, though non-biodegradable, are both beneficial and harmful for agriculture. Select the INCORRECT option regarding pesticides.

Ans 1. They reduce plant growth

2.

They reduce chlorophyll content of the plant and hence affect photosynthesis

3. They are used to control weeds, pests and plant diseases

4.

They alter nitrogen metabolism, so less protein content in plants

Question ID : 7518974680
Option 1 ID : 75189718718
Option 2 ID : 75189718717
Option 3 ID : 75189718720
Option 4 ID : 75189718719
Status : Answered
Chosen Option : 4

Q.99 A train is moving in from north to south direction. It overtakes Raj and Madhur who are walking in the same direction at the rate of 2 km/h and 4 km/h in 9 sec and 10 sec, respectively. If the train is x metres long, find the value of x.

Ans 1. 50

2. 30

3. 70

4. 90

Question ID : 7518975651
Option 1 ID : 75189722603
Option 2 ID : 75189722604
Option 3 ID : 75189722602
Option 4 ID : 75189722601
Status : Not Answered
Chosen Option : --

Q.100 In a class of 11 students, each scored differently. V's rank from the bottom is 6th, while D's rank from the top is 4th. T's rank from the top is exactly between the ranks of V and D. What is T's rank from the bottom?

Ans 1. 5th

2. 7th

3. 8th

4. 9th

Question ID : 7518974719
Option 1 ID : 75189718873
Option 2 ID : 75189718875
Option 3 ID : 75189718874
Option 4 ID : 75189718876
Status : Answered
Chosen Option : 2