



RRB GROUP - D **SHIFT - 1** (26-08-2022)

- ★ Latest Govt Job updates
- ★ Private Job updates
- ★ Free Mock tests available

Visit - teachingninja.in



रेल भर्ती बोर्ड / RAILWAY RECRUITMENT BOARDS
सी ई एन आर आर सी - ०१/२०१९ - CEN RRC - 01/2019



Roll Number	
Candidate Name	
Test Center Name	
Test Date	26/08/2022
Test Time	9:00 AM - 10:30 AM
Subject	Level 1

* Note

Correct Answer will carry 1 mark per Question.
Incorrect Answer will carry 1/3 Negative mark per Question.

- Options shown in green color with a tick icon are correct.
- Chosen option on the right of the question indicates the option selected by the candidate.

Section : Level 1

Q.1 Find the mode of the given frequency distribution.

x	0-10	10-20	20-30	30-40	40-50
f	5	8	10	2	5

- Ans
- 1. 20
 - 2. 26
 - 3. 22
 - 4. 24

Question ID : 7518975900

Option 1 ID : 75189723597

Option 2 ID : 75189723600

Option 3 ID : 75189723598

Option 4 ID : 75189723599

Status : Not Attempted and
Marked For Review

Chosen Option : --

Q.2 The position of how many letters will remain unchanged if each of the letters in the word QUALITY is arranged in alphabetical order?

- Ans**
- 1. Three
 - 2. None
 - 3. Two
 - 4. One

Question ID : 7518977344
Option 1 ID : 75189729376
Option 2 ID : 75189729373
Option 3 ID : 75189729375
Option 4 ID : 75189729374
Status : Answered
Chosen Option : 4

Q.3 Karan steps out of his house and walks 200 m towards the east. Then, he takes a right turn and walks 50 m. Then, he takes a right turn and walks 70 m. Then, he takes left turn and walks 35 m. Then, he takes a right turn and walks 130 m. Finally, he takes a final right turn and walks 45 m to reach his college. How far and in which direction is the college from Karan's house? (All turns are 90 degree turns only)

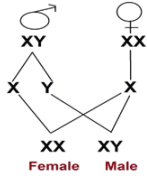
- Ans**
- 1. 40 m, South
 - 2. 50 m, North
 - 3. 50 m, South
 - 4. 40 m, North

Question ID : 7518975050
Option 1 ID : 75189720200
Option 2 ID : 75189720197
Option 3 ID : 75189720198
Option 4 ID : 75189720199
Status : Answered
Chosen Option : 1



Teachingninja.in

Q.4 A flow chart of sex determination in human beings is shown below. Some conclusions that can be drawn from it are mentioned in the options. Select the INCORRECT option.



- Ans
- 1. The male decides the sex of the offspring.
 - 2. All children inherit X chromosome from their mother.
 - 3. The chances of a child being male or female is 50%.
 - 4. The female decides the sex of the offspring.

Question ID : 7518974650

Option 1 ID : 75189718598

Option 2 ID : 75189718600

Option 3 ID : 75189718599

Option 4 ID : 75189718597

Status : Answered

Chosen Option : 4

Q.5 A ray of light, passing through the centre of curvature, is incident on a concave mirror. It is reflected by an angle of

- _____.
- Ans
- 1. 10°
 - 2. 20°
 - 3. 0°
 - 4. 30°

Question ID : 7518976567

Option 1 ID : 75189726267

Option 2 ID : 75189726266

Option 3 ID : 75189726268

Option 4 ID : 75189726265

Status : Answered

Chosen Option : 4

Q.6 Select the option that correctly indicates which of the following statements are true.

When a piece of magnesium metal is placed in copper sulphate solution:

- (i) magnesium displaces copper from copper sulphate solution.
- (ii) the blue colour of copper sulphate solution fades.
- (iii) a red brown deposit of copper metal is formed on the magnesium piece.

- Ans
- 1. i and ii
 - 2. i and iii
 - 3. i, ii and iii
 - 4. ii and iii

Question ID : 7518973587
Option 1 ID : 75189714346
Option 2 ID : 75189714347
Option 3 ID : 75189714345
Option 4 ID : 75189714348
Status : **Marked For Review**
Chosen Option : 3

Q.7 A sum of money is distributed among four persons A, B, C and D in the ratio 4: 7: 9: 3. If C gets ₹800 more than B, then find the amount that D gets.

- Ans
- 1. ₹1,200
 - 2. ₹1,000
 - 3. ₹1,400
 - 4. ₹1,500

Question ID : 7518976054
Option 1 ID : 75189724214
Option 2 ID : 75189724213
Option 3 ID : 75189724215
Option 4 ID : 75189724216
Status : **Answered**
Chosen Option : 1

Q.8 The average of 70 values is 40. If each value is multiplied by 20, what will be the changed average?

- Ans
- 1. 60
 - 2. 800
 - 3. 1400
 - 4. 90

Question ID : 7518975665
Option 1 ID : 75189722660
Option 2 ID : 75189722659
Option 3 ID : 75189722657
Option 4 ID : 75189722658
Status : **Answered**
Chosen Option : 2

Q.9 In March 2022, which State Assembly became the first to implement the National e-Vidhan Application (NeVA) programme to become paperless?

- Ans**
- 1. Rajasthan
 - 2. Assam
 - 3. Mizoram
 - 4. Nagaland

Question ID : 7518973980
Option 1 ID : 75189715919
Option 2 ID : 75189715917
Option 3 ID : 75189715920
Option 4 ID : 75189715918
Status : Answered
Chosen Option : 2

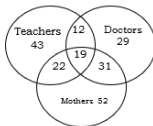
Q.10 Which of the following options is the closest approximate value which will come in place of question mark (?) in the following equation?

$$44.999 + 8.998 + 23.996 + 11.998 - 7.009 + 8.002 \times 1.998 = ?$$

- Ans**
- 1. 28
 - 2. 16
 - 3. 20
 - 4. 24

Question ID : 7518975310
Option 1 ID : 75189721240
Option 2 ID : 75189721237
Option 3 ID : 75189721238
Option 4 ID : 75189721239
Status : Answered
Chosen Option : 2

Q.11 Study the diagram and answer the question that follows. The numbers in different sections indicate the number of persons. What is the sum of the two categories, that is teachers who are doctors and teachers who are mothers but excluding teachers who are doctors as well as mothers?



- Ans**
- 1. 34
 - 2. 50
 - 3. 43
 - 4. 31

Question ID : 7518974755
Option 1 ID : 75189719017
Option 2 ID : 75189719020
Option 3 ID : 75189719019
Option 4 ID : 75189719018
Status : Answered
Chosen Option : 3

Q.12 Two resistances R_1 and R_2 are connected in parallel. Their equivalent resistance is:

Ans

✗ 1. $\frac{R_1 + R_2}{R_1 R_2}$

✗ 2. $R_1 + R_2$

✗ 3. $R_1 R_2$

✓ 4. $\frac{R_1 R_2}{R_1 + R_2}$

Question ID : 7518975479

Option 1 ID : 75189721913

Option 2 ID : 75189721915

Option 3 ID : 75189721916

Option 4 ID : 75189721914

Status : Answered

Chosen Option : 1

Q.13 Which Kabaddi team won the title of Pro Kabaddi League 2022 for the first time by defeating three-time champions Patna Pirates?

Ans

✓ 1. Dabang Delhi

✗ 2. Pink Panthers

✗ 3. Bengaluru Bulls

✗ 4. Gujrat Giants



Question ID : 7518973749

Option 1 ID : 75189714995

Option 2 ID : 75189714993

Option 3 ID : 75189714996

Option 4 ID : 75189714994

Status : Not Attempted and
Marked For Review

Chosen Option : --

Q.14 Select the option that is related to the fifth number in the same way as the second number is related to the first number and the fourth number is related to the third number.

8 : 127 :: 5 : 49 :: 11 : ?

- Ans**
- 1. 103
 - 2. 214
 - 3. 203
 - 4. 241

Question ID : 7518977397

Option 1 ID : 75189729587

Option 2 ID : 75189729585

Option 3 ID : 75189729588

Option 4 ID : 75189729586

Status : **Not Attempted and Marked For Review**

Chosen Option : --

Q.15 Ananya, Jaya, Priya, Roma, Geeta and Deepa were having a picnic lunch around a circular table. They were facing the table's centre. Exactly two people sit between Roma and Priya. Roma sits second to the right of Ananya. Deepa was second to the left of Jaya. Who was the immediate left of Deepa?

- Ans**
- 1. Roma
 - 2. Geeta
 - 3. Priya
 - 4. Ananya

Question ID : 7518974893

Option 1 ID : 75189719571

Option 2 ID : 75189719572

Option 3 ID : 75189719570

Option 4 ID : 75189719569

Status : **Answered**

Chosen Option : 4

Q.16 According to Newland's Law of Octaves, the properties of beryllium are similar to those of _____.

- Ans**
- 1. Mg
 - 2. Al
 - 3. C
 - 4. B

Question ID : 7518973505

Option 1 ID : 75189714020

Option 2 ID : 75189714019

Option 3 ID : 75189714018

Option 4 ID : 75189714017

Status : **Answered**

Chosen Option : 4

Q.17 Which of the following properties is NOT exhibited or shown by carbon?

- Ans
- 1. Covalency
 - 2. Metallic character
 - 3. Catenation
 - 4. Allotropy

Question ID : 7518973384
Option 1 ID : 75189713534
Option 2 ID : 75189713536
Option 3 ID : 75189713533
Option 4 ID : 75189713535
Status : Answered
Chosen Option : 2

Q.18 ΔABC is similar to ΔFED and $AB = x$ cm, $BC = x + 2$ cm, $EF = 12$ cm, and $ED = 18$ cm. The value of x is _____.

- Ans
- 1. 4 cm
 - 2. 2 cm
 - 3. -4 cm
 - 4. -2 cm

Question ID : 7518976205
Option 1 ID : 75189724819
Option 2 ID : 75189724817
Option 3 ID : 75189724820
Option 4 ID : 75189724818
Status : Answered
Chosen Option : 1

Q.19 Which of the following is the first indigenous drug to treat COVID-19 developed jointly by the Centre for Cellular and Molecular Biology (CCMB), VINS Bioproducts and the University of Hyderabad (UoH)?

- Ans
- 1. Moderna
 - 2. Vincov-19
 - 3. Covavex 22
 - 4. Covishield

Question ID : 7518974152
Option 1 ID : 75189716605
Option 2 ID : 75189716606
Option 3 ID : 75189716607
Option 4 ID : 75189716608
Status : Answered
Chosen Option : 4

Q.20 How many numbers between 1 to 150 are divisible by 3 and 4 both?

- Ans
- 1. 12
 - 2. 10
 - 3. 11
 - 4. 9

Question ID : 7518976029
Option 1 ID : 75189724116
Option 2 ID : 75189724114
Option 3 ID : 75189724115
Option 4 ID : 75189724113
Status : Answered
Chosen Option : 1

Q.21 SEWA Cooperative Bank was first initiated in _____ in 1974.

- Ans
- 1. Varanasi
 - 2. Ahmedabad
 - 3. Chennai
 - 4. Jaipur

Question ID : 7518976814
Option 1 ID : 75189727256
Option 2 ID : 75189727253
Option 3 ID : 75189727254
Option 4 ID : 75189727255
Status : Not Answered
Chosen Option : --



TeachingNinja.in

Q.22 In this question, a group of numbers/symbols is coded using letters as per the table given below and the conditions which follow. The correct combination of codes following the conditions is your answer.

Number/ Symbol	1	%	8	4	ø	ð	2	\$!	6	=	3	7	5
Code	A	E	I	O	U	P	R	T	V	X	Z	B	D	F

Conditions:

- (i) If the first element is a number and the last, a symbol, the codes for these two (the first and the last elements) are to be interchanged.
- ii) If the first element is an EVEN number and the last, an ODD number, the first and last elements are to be coded as &.
- (iii) If both the second and the third elements are prime numbers, the third element is to be coded as the code for the second element.

Question: 2 5 3 7 3

- Ans**
- 1. B B T D R
 - 2. R B T D B
 - 3. & B T D &
 - 4. & T B D &

Question ID : 7518977359
 Option 1 ID : 75189729435
 Option 2 ID : 75189729436
 Option 3 ID : 75189729434
 Option 4 ID : 75189729433
 Status : Answered
 Chosen Option : 4

Q.23 Refer to the following number series and answer the question.

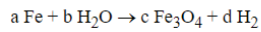
(Left) 2 5 4 3 7 8 6 7 9 4 3 7 8 6 2 3 4 8 9 4 8 7 6 4 3 7 2 8 9 7 5 3 2 4 5 9 (Right)

If all the even numbers are dropped from the series, which of the following will be sixth from the left?

- Ans**
- 1. 5
 - 2. 7
 - 3. 3
 - 4. 9

Question ID : 7518975231
 Option 1 ID : 75189720922
 Option 2 ID : 75189720923
 Option 3 ID : 75189720921
 Option 4 ID : 75189720924
 Status : Answered
 Chosen Option : 3

Q.24 In a balanced chemical reaction, like the one shown below, the values of a, b, c and d respectively, are:



- Ans
- 1. 3,4,1,4
 - 2. 3,1,1,4
 - 3. 3,4,3,4
 - 4. 1,4,1,4

Question ID : 7518973566
Option 1 ID : 75189714262
Option 2 ID : 75189714261
Option 3 ID : 75189714264
Option 4 ID : 75189714263
Status : Answered
Chosen Option : 1

Q.25 The ratio between the present ages of P and Q is 7 : 5, respectively. The ratio between P's age 5 years ago and Q's age 5 years hence is 1 : 1. What is the ratio between P's age 5 years hence and Q's age 5 years ago?

- Ans
- 1. 2 : 3
 - 2. 2 : 1
 - 3. 1 : 2
 - 4. 3 : 2

Question ID : 7518976342
Option 1 ID : 75189725368
Option 2 ID : 75189725365
Option 3 ID : 75189725366
Option 4 ID : 75189725367
Status : Answered
Chosen Option : 4

Q.26 The mean proportional of 0.25 and 0.64 is

- Ans
- 1. 0.7
 - 2. 0.4
 - 3. 0.5
 - 4. 0.6

Question ID : 7518975606
Option 1 ID : 75189722424
Option 2 ID : 75189722421
Option 3 ID : 75189722422
Option 4 ID : 75189722423
Status : Answered
Chosen Option : 2

Q.27 If $25x^3 = 1600$, then which of the following is a possible value of x ?

- Ans
- 1. 3
 - 2. 4
 - 3. 5
 - 4. 2

Question ID : 7518975555
Option 1 ID : 75189722219
Option 2 ID : 75189722217
Option 3 ID : 75189722220
Option 4 ID : 75189722218
Status : Answered
Chosen Option : 2

Q.28 Identify the world's largest river line island formed by the Brahmaputra.

- Ans
- 1. Sandwip Island
 - 2. Sumba Island
 - 3. Majuli Island
 - 4. Diglipur Island

Question ID : 7518977261
Option 1 ID : 75189729041
Option 2 ID : 75189729043
Option 3 ID : 75189729042
Option 4 ID : 75189729044
Status : Not Attempted and Marked For Review
Chosen Option : --

Q.29 If a substance gains hydrogen during reaction, it is said to be:

- Ans
- 1. neutralised
 - 2. reduced
 - 3. decomposed
 - 4. oxidised

Question ID : 7518973612
Option 1 ID : 75189714448
Option 2 ID : 75189714445
Option 3 ID : 75189714447
Option 4 ID : 75189714446
Status : Answered
Chosen Option : 2

Q.30 Which of the following is a qualitative instrument of credit control used by the Reserve Bank of India?

- Ans
- 1. Moral suasion
 - 2. Repo rate
 - 3. Open market operations
 - 4. Bank rate

Question ID : 7518976831
Option 1 ID : 75189727321
Option 2 ID : 75189727324
Option 3 ID : 75189727322
Option 4 ID : 75189727323
Status : Answered
Chosen Option : 2

Q.31 In a cell that is NOT dividing, DNA is present as part of the _____.

- Ans
- 1. chromosome
 - 2. nucleoplasm
 - 3. gene
 - 4. chromatin material

Question ID : 7518974311
Option 1 ID : 75189717242
Option 2 ID : 75189717241
Option 3 ID : 75189717243
Option 4 ID : 75189717244
Status : Answered
Chosen Option : 3

Q.32 Recycling is one of the best methods to decrease the amount of waste generated. Some of its benefits are given below.
Which of the following is NOT an advantage of recycling?

- Ans
- 1. It reduces waste sent to landfills.
 - 2. It is of economic benefit, as it creates jobs.
 - 3. It is expensive and uses energy.
 - 4. It prevents pollution.

Question ID : 7518974672
Option 1 ID : 75189718685
Option 2 ID : 75189718687
Option 3 ID : 75189718688
Option 4 ID : 75189718686
Status : Answered
Chosen Option : 3

Q.33 BU23G is related to GZ18L in a certain way. In the same way, LC41M is related to QH36R. To which of the following is GU18N related following the same logic?

- Ans**
- ✓ 1. LZ13S
 - ✗ 2. LP15J
 - ✗ 3. ZL3G
 - ✗ 4. LZ13H

Question ID : 7518977377
Option 1 ID : 75189729505
Option 2 ID : 75189729507
Option 3 ID : 75189729508
Option 4 ID : 75189729506
Status : Not Answered
Chosen Option : --

Q.34 A statement is given, followed by four conclusions given in the options. Find out which conclusion is true based on the given statement.

Statement: $C > X < N < S < D = K$

- Ans**
- ✓ 1. $K > N$
 - ✗ 2. $X > K$
 - ✗ 3. $C > N$
 - ✗ 4. $N > D$

Question ID : 7518975194
Option 1 ID : 75189720775
Option 2 ID : 75189720776
Option 3 ID : 75189720773
Option 4 ID : 75189720774
Status : Answered
Chosen Option : 3

Q.35 Six persons, A, B, C, D, E and F, were born on different dates – 12th, 14th, 18th, 19th, 4th and 6th, of the same month. None of them were born after D and he was born just after E. Only three people were born before A. Only two people were born between C and E. B was not born after C. Who among the following was born on 12th?

- Ans**
- ✗ 1. A
 - ✓ 2. F
 - ✗ 3. C
 - ✗ 4. B

Question ID : 7518977308
Option 1 ID : 75189729232
Option 2 ID : 75189729231
Option 3 ID : 75189729230
Option 4 ID : 75189729229
Status : Answered
Chosen Option : 2

Q.36 If '+' means '-', '-' means '×', '×' means '+' and '+' means '+', what will come in place of the question mark (?) in the following equation?

$$15 + 12 \times 4 \div 5 - 2 = ?$$

- Ans
- 1. 18
 - 2. 22
 - 3. 20
 - 4. 28

Question ID : 7518977414

Option 1 ID : 75189729655

Option 2 ID : 75189729654

Option 3 ID : 75189729653

Option 4 ID : 75189729656

Status : **Not Attempted and Marked For Review**

Chosen Option : --

Q.37 A clock marked for ₹10,000 is available on successive discounts of 40% and k%. If the selling price of the clock is ₹2,400, then find the value of k.

- Ans
- 1. 40%
 - 2. 36%
 - 3. 60%
 - 4. 24%

Question ID : 7518976085

Option 1 ID : 75189724340

Option 2 ID : 75189724337

Option 3 ID : 75189724338

Option 4 ID : 75189724339

Status : **Answered**

Chosen Option : 2



Teachingninja.in

Q.38 Find the marginal product.

Labour	Total Product	Marginal Product
1	10	10
2	28	?
3	40	?
4	50	?

- Ans
- ✓ 1. 18, 12 and 10
 - ✗ 2. 5, 9.33 and 10
 - ✗ 3. 9, 4 and 2.50
 - ✗ 4. 14, 13.33 and 12.50

Question ID : 7518977235
Option 1 ID : 75189728937
Option 2 ID : 75189728940
Option 3 ID : 75189728939
Option 4 ID : 75189728938
Status : Not Answered
Chosen Option : --

Q.39 Five boxes F, E, T, C and S are placed one over the other but not necessarily in the same order. S is second from the top, while E is second from the bottom. C is neither at the top nor at the bottom. What is the position of C from the top?

- Ans
- ✓ 1. Third
 - ✗ 2. Fifth
 - ✗ 3. Second
 - ✗ 4. Fourth

Question ID : 7518974734
Option 1 ID : 75189718935
Option 2 ID : 75189718933
Option 3 ID : 75189718936
Option 4 ID : 75189718934
Status : Answered
Chosen Option : 1

Q.40 How are the gaseous waste products produced in the hard stem of big plants and trees removed by the plant?

- Ans
- ✓ 1. Through lenticels
 - ✗ 2. Through osmosis
 - ✗ 3. Through transpiration
 - ✗ 4. Through stomata

Question ID : 7518974558
Option 1 ID : 75189718230
Option 2 ID : 75189718232
Option 3 ID : 75189718231
Option 4 ID : 75189718229
Status : Answered
Chosen Option : 3

Q.41

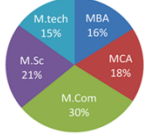
Which of the following Indian language constitutes third most spoken language in the world as per Forbes data published in August 2021?

- Ans
- ✗ 1. Telugu
 - ✗ 2. Bengali
 - ✗ 3. Odia
 - ✓ 4. Hindi

Question ID : 7518973815
Option 1 ID : 75189715258
Option 2 ID : 75189715257
Option 3 ID : 75189715260
Option 4 ID : 75189715259
Status : Answered
Chosen Option : 1

Q.42 The following chart shows fee waiver seats in different courses in a university. Study the chart and answer the question.

Total number of students in the university = 15000



What is the total number of fee waiver seats in M.Tech and M.Com together?

- Ans**
- ✓ 1. 6750
 - ✗ 2. 6800
 - ✗ 3. 4250
 - ✗ 4. 5000

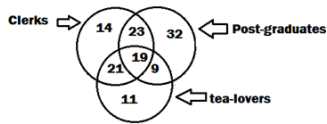
Question ID : 7518977429
Option 1 ID : 75189729714
Option 2 ID : 75189729716
Option 3 ID : 75189729713
Option 4 ID : 75189729715
Status : **Answered**
Chosen Option : 1

Q.43 It takes two pipes A and B, running together, to fill a tank completely in 4 minutes. If it takes A, 6 minutes less than B, to fill the tank completely, then what will be the time taken by B alone to fill the tank completely?

- Ans**
- ✓ 1. 12 min
 - ✗ 2. 20 min
 - ✗ 3. 6 min
 - ✗ 4. 15 min

Question ID : 7518975660
Option 1 ID : 75189722638
Option 2 ID : 75189722639
Option 3 ID : 75189722637
Option 4 ID : 75189722640
Status : **Not Attempted and Marked For Review**
Chosen Option : --

Q.44 Study the given diagram carefully and answer the question. The numbers in different sections indicate the number of persons.



How many such tea-lovers are there who are also post-graduates but NOT clerks?

- Ans
- 1. 11
 - 2. 19
 - 3. 9
 - 4. 28

Question ID : 7518975182
Option 1 ID : 75189720728
Option 2 ID : 75189720726
Option 3 ID : 75189720725
Option 4 ID : 75189720727
Status : Answered
Chosen Option : 3

Q.45 Where was the 14th National Wheelchair Fencing Championship – 2021-22 held between 25 and 27 February 2022?

- Ans
- 1. West Bengal
 - 2. Odisha
 - 3. Assam
 - 4. Jharkhand

Question ID : 7518976514
Option 1 ID : 75189726055
Option 2 ID : 75189726054
Option 3 ID : 75189726053
Option 4 ID : 75189726056
Status : Not Answered
Chosen Option : --

Q.46 Which molecule is known as the 'Energy Currency' of the cell

- Ans
- 1. Pyruvic acid
 - 2. Glucose
 - 3. ADP
 - 4. ATP

Question ID : 7518974387
Option 1 ID : 75189717545
Option 2 ID : 75189717546
Option 3 ID : 75189717547
Option 4 ID : 75189717548
Status : Answered
Chosen Option : 2

Q.47 A ray of white light is incident on a refracting surface AB of a glass prism and emerges out of the other refracting surface AC. Consider the following statements:

- (a) The angle of refraction at surface AB is different for different colours of white light.
- (b) The angle of refraction at the surface AC is the same for different colours.

Which of the above statements is/are correct?

- Ans**
- 1. Both (a) and (b)
 - 2. Only (a)
 - 3. Only (b)
 - 4. Neither (a) nor (b)

Question ID : 7518976644
Option 1 ID : 75189726575
Option 2 ID : 75189726573
Option 3 ID : 75189726574
Option 4 ID : 75189726576
Status : Answered
Chosen Option : 3

Q.48 The power of a concave lens of focal length 25 cm is _____.

- Ans**
- 1. 0.04 D
 - 2. 4.0 D
 - 3. -0.04 D
 - 4. -4.0 D

Question ID : 7518976636
Option 1 ID : 75189726542
Option 2 ID : 75189726544
Option 3 ID : 75189726541
Option 4 ID : 75189726543
Status : Answered
Chosen Option : 1

Q.49 Refer to the following letter series and answer the question.

(Left) T Y A N E C M K E W A F H E Q A P M N B E D H E K U W S D A N M A W E (Right)

If all the vowels are dropped from the series, which of the following will be fifth from the right?

- Ans**
- 1. S
 - 2. K
 - 3. D
 - 4. W

Question ID : 7518975230
Option 1 ID : 75189720917
Option 2 ID : 75189720920
Option 3 ID : 75189720918
Option 4 ID : 75189720919
Status : Answered
Chosen Option : 1

Q.50 Consider the below statements and identify the correct answer.

Statement-I: An Olfactory indicator is a material whose smell varies depending on whether it is mixed with an acidic or basic solution.

Statement-II: Onion, clove oil and vanilla extract are examples of some olfactory indicators

- Ans**
- 1. Both the statements are false.
 - 2. Statement-I is true, and Statement-II is false.
 - 3. Both the statements are true.
 - 4. Statement-II is true, and Statement-I is false.

Question ID : 7518973619
Option 1 ID : 75189714474
Option 2 ID : 75189714475
Option 3 ID : 75189714473
Option 4 ID : 75189714476
Status : Answered
Chosen Option : 3

Q.51 In the context of Industrial Policy Resolution 1956, which of the following is a correct statement?

- a) Schedule A comprised of industries exclusively owned by the state.
- b) Schedule B comprised of small-scale industries.
- c) Schedule C comprised of the remaining industries.

- Ans**
- 1. Only a and b
 - 2. Only a and c
 - 3. Only b and c
 - 4. All of a, b, and c

Question ID : 7518976836
Option 1 ID : 75189727341
Option 2 ID : 75189727343
Option 3 ID : 75189727342
Option 4 ID : 75189727344
Status : Not Answered
Chosen Option : --



Q.52 Which of the following properties are a sure test for magnetism?

(a) Attractive property

(b) Repulsive property

(c) Directive property

- Ans
- 1. Both (a) and (b)
 - 2. Both (a) and (c)
 - 3. Both (b) and (c)
 - 4. (a), (b) and (c)

Question ID : 7518975510
Option 1 ID : 75189722037
Option 2 ID : 75189722039
Option 3 ID : 75189722038
Option 4 ID : 75189722040
Status : Answered
Chosen Option : 4

Q.53 Gandhi Jayanti is celebrated every year on 2nd October as a national festival. In which year was Mahatma Gandhi's 150th birth anniversary?

- Ans
- 1. 2018
 - 2. 2019
 - 3. 2020
 - 4. 2021

Question ID : 7518974000
Option 1 ID : 75189715997
Option 2 ID : 75189715998
Option 3 ID : 75189715999
Option 4 ID : 75189716000
Status : Answered
Chosen Option : 2

Q.54 In a certain code language, 'ERGOT' is written as 'FTJSY' and 'SKELP' is written as 'TMHPU'. How will 'KESHA' be written in that language?

- Ans
- 1. GLVEL
 - 2. LGLVE
 - 3. LGVLF
 - 4. LGFVL

Question ID : 7518974823
Option 1 ID : 75189719290
Option 2 ID : 75189719291
Option 3 ID : 75189719292
Option 4 ID : 75189719289
Status : Answered
Chosen Option : 3

Q.55 If $\operatorname{cosec} 2A = \sec(A - 15^\circ)$, then find the measure of A (in degrees).

- Ans
- 1. 23
 - 2. 35
 - 3. 45
 - 4. 15

Question ID : 7518976211
Option 1 ID : 75189724842
Option 2 ID : 75189724843
Option 3 ID : 75189724844
Option 4 ID : 75189724841
Status : Answered
Chosen Option : 3

Q.56 Select the set in which the numbers are related in the same way as are the numbers of the following sets.

(NOTE : Operations should be performed on the whole numbers, without breaking down the numbers into its constituent digits. E.g. 13 – Operations on 13 such as adding / subtracting /multiplying etc. to 13 can be performed. Breaking down 13 into 1 and 3 and then performing mathematical operations on 1 and 3 is not allowed)

(13, 84, 29)

(27, 122, 34)

- Ans
- 1. (25, 90, 20)
 - 2. (15, 57, 27)
 - 3. (17, 45, 13)
 - 4. (10, 56, 23)



Question ID : 7518974867
Option 1 ID : 75189719465
Option 2 ID : 75189719468
Option 3 ID : 75189719466
Option 4 ID : 75189719467
Status : Not Answered
Chosen Option : --

Q.57 Simplify $(2z - 5y)^2 + (5z + 2y)^2 - 25z^2$.

- Ans
- 1. $19y^2 + 4z^2$
 - 2. $29y^2 + 4z^2$
 - 3. $29y^2 - 4z^2$
 - 4. $19y^2 - 4z^2$

Question ID : 7518975694
Option 1 ID : 75189722773
Option 2 ID : 75189722774
Option 3 ID : 75189722775
Option 4 ID : 75189722776
Status : Answered
Chosen Option : 2

Q.58 Which of the following schedules of the Indian Constitution describes the number of seats represented in the Council of States from each state and Union Territory?

Ans

- 1. First Schedule
- 2. Fourth Schedule
- 3. Third Schedule
- 4. Second Schedule

Question ID : 7518973933

Option 1 ID : 75189715732

Option 2 ID : 75189715731

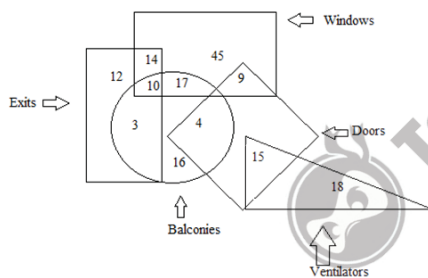
Option 3 ID : 75189715729

Option 4 ID : 75189715730

Status : **Not Answered**

Chosen Option : --

Q.59 Study the given diagram carefully and answer the question. The numbers in different sections indicate the number of units.



How many such balconies are there that are either doors or windows?

- Ans**
- 1. 21
 - 2. 20
 - 3. 17
 - 4. 16

Question ID : 7518977322

Option 1 ID : 75189729285

Option 2 ID : 75189729287

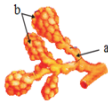
Option 3 ID : 75189729286

Option 4 ID : 75189729288

Status : **Answered**

Chosen Option : 1

Q.60 The diagram below shows a part of the respiratory system in humans. Which option shows the correct labelling of 'a' and 'b' and the function of 'b'?



- Ans**
- 1. a - Bronchioles, b - Alveoli (exchange of gases)
 - 2. a - Bronchioles, b - Bronchi (exchange of gases)
 - 3. a - Bronchi, b - Alveoli (exchange of gases)
 - 4. a - Bronchi, b - Bronchioles (exchange of gases)

Question ID : 7518974585

Option 1 ID : 75189718338

Option 2 ID : 75189718340

Option 3 ID : 75189718337

Option 4 ID : 75189718339

Status : **Not Attempted and Marked For Review**

Chosen Option : --

Q.61 If a sum of ₹3,500 is invested at 5% compound interest per annum, compounded annually, then what is the period for which the compound interest is ₹358.75?

- Ans**
- 1. 20 months
 - 2. 18 months
 - 3. 15 months
 - 4. 24 months

Question ID : 7518976279

Option 1 ID : 75189725114

Option 2 ID : 75189725113

Option 3 ID : 75189725116

Option 4 ID : 75189725115

Status : **Not Attempted and Marked For Review**

Chosen Option : --

Q.62 Pole C is to the south of pole H and east of pole R. Pole M is to the west of pole R. Pole A is to the south of pole M. What is the position of pole R with respect to the pole H?

- Ans**
- 1. South
 - 2. South-west
 - 3. South-east
 - 4. North

Question ID : 7518977368

Option 1 ID : 75189729470

Option 2 ID : 75189729471

Option 3 ID : 75189729472

Option 4 ID : 75189729469

Status : **Not Answered**

Chosen Option : --

Q.63 The difference of the ages of two siblings is 7 years. If the sum of their ages is 21 years, how old is the younger of the siblings?

- Ans
- 1. 3 years
 - 2. 10 years
 - 3. 7 years
 - 4. 14 years

Question ID : 7518975716
Option 1 ID : 75189722864
Option 2 ID : 75189722862
Option 3 ID : 75189722863
Option 4 ID : 75189722861
Status : Answered
Chosen Option : 3

Q.64 The most electronegative element in the periodic table is:

- Ans
- 1. fluorine
 - 2. chlorine
 - 3. nitrogen
 - 4. oxygen

Question ID : 7518973735
Option 1 ID : 75189714938
Option 2 ID : 75189714937
Option 3 ID : 75189714940
Option 4 ID : 75189714939
Status : Answered
Chosen Option : 1

Q.65 A semi-circular field of radius 14 m needs to be fenced with a wire. Find the length of wire required.

- Ans
- 1. 72 m
 - 2. 46 m
 - 3. 44 m
 - 4. 80 m

Question ID : 7518975750
Option 1 ID : 75189722999
Option 2 ID : 75189722998
Option 3 ID : 75189722997
Option 4 ID : 75189723000
Status : Answered
Chosen Option : 3

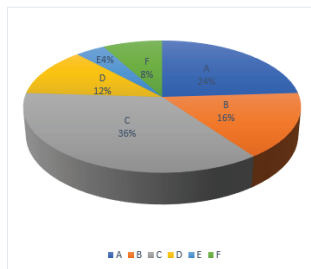
Q.66 Which factor is NOT a parameter for declaring an area as an urban area?

- Ans
- 1. A minimum population of 5000
 - 2. At least 75% of male population engaged in non-agricultural occupation
 - 3. Density of population of at least 400 persons per square kilometre
 - 4. At least 60% of the population lie above poverty line

Question ID : 7518977289
Option 1 ID : 75189729155
Option 2 ID : 75189729153
Option 3 ID : 75189729154
Option 4 ID : 75189729156
Status : Answered
Chosen Option : 2

Q.67 The following pie chart shows the percentage distribution of power to six districts, A to F, of a state. Study the chart and answer the question.

Total number of units generated = 5400



What is the average number of units distributed to districts C, D and E?

- Ans
- 1. 1050
 - 2. 935
 - 3. 1120
 - 4. 936

Question ID : 7518977430
Option 1 ID : 75189729719
Option 2 ID : 75189729717
Option 3 ID : 75189729720
Option 4 ID : 75189729718
Status : Answered
Chosen Option : 4

Q.68 Which technology company launched a Cyber Security Centre in Bengaluru in February 2022, to tackle cyber-attacks?

- Ans
- 1. Apple
 - 2. IBM
 - 3. Dell
 - 4. HCL

Question ID : 7518973974
Option 1 ID : 75189715895
Option 2 ID : 75189715894
Option 3 ID : 75189715896
Option 4 ID : 75189715893
Status : Answered
Chosen Option : 2

Q.69 Eight people, A, B, C, D, E, F, G and H, are sitting in a straight row, facing the south. B is sitting at one of the extreme ends and his immediate left neighbour is F. Only two people are sitting between F and D. C is sitting between D and H. Neither E nor A is sitting at the extreme end. How many people are sitting between F and G?

- Ans
- 1. Four
 - 2. Two
 - 3. Five
 - 4. One

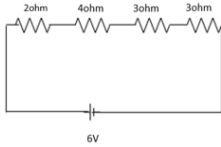
Question ID : 7518977299
Option 1 ID : 75189729196
Option 2 ID : 75189729194
Option 3 ID : 75189729195
Option 4 ID : 75189729193
Status : Answered
Chosen Option : 3

Q.70 If one of the roots of a quadratic equation is $\frac{1}{2-\sqrt{2}}$, then find the quadratic equation.

- Ans
- 1. $\sqrt{2}x^2 + 3x - 2 = 0$
 - 2. $-2x^2 + 3x + 5 = 0$
 - 3. $2x^2 - 4x + 1 = 0$
 - 4. $\sqrt{2}x^2 + 3x + 2 = 0$

Question ID : 7518976167
Option 1 ID : 75189724667
Option 2 ID : 75189724668
Option 3 ID : 75189724665
Option 4 ID : 75189724666
Status : Not Attempted and Marked For Review
Chosen Option : --

Q.71 Which of the following options gives the current and equivalent resistance of the circuit in respective order?



- Ans
- 1. 5 A, 12 Ω
 - 2. 0.5 A, 6 Ω
 - 3. 0.5 A, 12 Ω
 - 4. 5 A, 6 Ω

Question ID : 7518975477
Option 1 ID : 75189721906
Option 2 ID : 75189721907
Option 3 ID : 75189721905
Option 4 ID : 75189721908
Status : Answered
Chosen Option : 3

Q.72 All of the methods mentioned below are effective preventive methods of HIV infection that can be practiced. Select the one that is NOT practiced.

- Ans
- 1. Safe blood transfusion method
 - 2. Use of available vaccines
 - 3. Safe and protected sex
 - 4. Use of sterile injection needles

Question ID : 7518974629
Option 1 ID : 75189718516
Option 2 ID : 75189718514
Option 3 ID : 75189718513
Option 4 ID : 75189718515
Status : Answered
Chosen Option : 3

Q.73 The Right to Education for all between _____ years of age is included in Article 21-A of Fundamental Rights in the Constitution of India.

- Ans
- 1. 6 to 18
 - 2. 6 to 14
 - 3. 6 to 12
 - 4. 5 to 10

Question ID : 7518977272
Option 1 ID : 75189729087
Option 2 ID : 75189729086
Option 3 ID : 75189729088
Option 4 ID : 75189729085
Status : Answered
Chosen Option : 2

Q.74 A and B can together complete a piece of work in 9 days, B and C together can complete the same work in 18 days and C and A together can complete it in 27 days. In how many days can A, B, and C, working together complete the same work?

Ans

1. $8\frac{9}{11}$ days

2. $9\frac{9}{11}$ days

3. $9\frac{7}{11}$ days

4. $9\frac{8}{11}$ days

Question ID : 7518975880

Option 1 ID : 75189723517

Option 2 ID : 75189723519

Option 3 ID : 75189723518

Option 4 ID : 75189723520

Status : Answered

Chosen Option : 3

Q.75 Which property/ properties of copper make it ideal for electrical transmission lines?

(i) Low melting point

(ii) High resistivity

(iii) Low resistance

Ans

1. Both (i) and (iii)

2. Only (iii)

3. Only (i)

4. Both (i) and (ii)

Question ID : 7518975486

Option 1 ID : 75189721944

Option 2 ID : 75189721942

Option 3 ID : 75189721941

Option 4 ID : 75189721943

Status : Answered

Chosen Option : 2

Q.76 दीघनिकाय (Digha Nikaya) _____ लंबे (दीघ) प्रवचनों (सुत्तों) का संग्रह है, जिसे तीन खंडों क्रमशः शिलाखंड, महावग्ग और पाथेय के रूप में विभाजित किया जाता है।

- Ans
- 1. 31
 - 2. 39
 - 3. 25
 - 4. 34

Question ID : 7518977193
Option 1 ID : 75189728770
Option 2 ID : 75189728772
Option 3 ID : 75189728769
Option 4 ID : 75189728771
Status : Not Answered
Chosen Option : --

Q.77 Which Indian state was the first to make rooftop rainwater harvesting structure mandatory for all homes?

- Ans
- 1. Karnataka
 - 2. Tamil Nadu
 - 3. Chhattisgarh
 - 4. Telangana

Question ID : 7518977256
Option 1 ID : 75189729023
Option 2 ID : 75189729024
Option 3 ID : 75189729021
Option 4 ID : 75189729022
Status : Not Attempted and Marked For Review
Chosen Option : --

Q.78 Which of the following property/properties are correct for the magnetic field lines around a bar magnet:

- (i) Magnetic field lines form closed loops
- (ii) Magnetic field lines do not intersect
- (iii) Outside the magnet, magnetic field lines go from south to north pole of the magnet.

- Ans
- 1. Both (i) and (ii)
 - 2. Only(ii)
 - 3. Both (ii) and (iii)
 - 4. Only (i)

Question ID : 7518975509
Option 1 ID : 75189722035
Option 2 ID : 75189722034
Option 3 ID : 75189722036
Option 4 ID : 75189722033
Status : Answered
Chosen Option : 1

Q.79 If $\Delta ABC \cong \Delta PQR$, which of the following need NOT be NECESSARILY true?

- Ans
- 1. $\angle A = \angle P; \angle B = \angle Q; \angle C = \angle R$
 - 2. $m(\overline{AB}) = m(\overline{PQ}); m(\overline{BC}) = m(\overline{RP}); \angle A = \angle P$
 - 3. $m(\overline{AB}) = m(\overline{PQ}); m(\overline{BC}) = m(\overline{QR}); \angle A = \angle P$
 - 4. $m(\overline{AB}) = m(\overline{PQ}); m(\overline{BC}) = m(\overline{QR}); m(\overline{CA}) = m(\overline{PR})$

Question ID : 7518975988
Option 1 ID : 75189723950
Option 2 ID : 75189723952
Option 3 ID : 75189723951
Option 4 ID : 75189723949
Status : Answered
Chosen Option : 1

Q.80 The marked price of a book is ₹900. A man bought the same for ₹693 after getting two successive discounts, the first being 12%. What was the second discount rate?

- Ans
- 1. 14.5%
 - 2. 11.5%
 - 3. 12.5%
 - 4. 13.5%

Question ID : 7518976287
Option 1 ID : 75189725148
Option 2 ID : 75189725145
Option 3 ID : 75189725146
Option 4 ID : 75189725147
Status : Answered
Chosen Option : 2

Q.81 A statement is given, followed by four conclusions given in the options. Find out which conclusion is true based on the given statement.

Statement: $H < Z > P = E > W > Q = U$

- Ans
- 1. $Q > E$
 - 2. $U = W$
 - 3. $Z > E$
 - 4. $H < P$

Question ID : 7518975201
Option 1 ID : 75189720804
Option 2 ID : 75189720803
Option 3 ID : 75189720802
Option 4 ID : 75189720801
Status : Not Attempted and Marked For Review
Chosen Option : --

Q.82 Which of the following numbers will replace the question mark (?) in the given series?

47, 48, 52, 79, 95, ?

- Ans
- 1. 220
 - 2. 202
 - 3. 212
 - 4. 221

Question ID : 7518977393
Option 1 ID : 75189729570
Option 2 ID : 75189729569
Option 3 ID : 75189729571
Option 4 ID : 75189729572
Status : Not Answered
Chosen Option : --

Q.83 A certain number of people are sitting in a row, facing the north. A sits fourth to the left of C and seventh to the left of B. B sits fifth to the left of D. There is only one person sitting between D and E. No person sits to the right of E. If no other person is sitting in the row, what is the total number of persons seated?

- Ans
- 1. 12
 - 2. 11
 - 3. 15
 - 4. 13

Question ID : 7518977312
Option 1 ID : 75189729246
Option 2 ID : 75189729247
Option 3 ID : 75189729248
Option 4 ID : 75189729245
Status : Not Answered
Chosen Option : --

Q.84 In which ailment's treatment is the medicinal plant 'Arjun' used?

- Ans
- 1. Gingivitis and ulcers
 - 2. Hypertension and earache
 - 3. Asthma and cold
 - 4. Diabetes and hypertension

Question ID : 7518977267
Option 1 ID : 75189729066
Option 2 ID : 75189729067
Option 3 ID : 75189729068
Option 4 ID : 75189729065
Status : Answered
Chosen Option : 1

Q.85 Who was the first Indian citizen to receive the Nobel Prize in literature?

- Ans
- 1. Sarojini Naidu
 - 2. Sully Prudhomme
 - 3. Swami Vivekananda
 - 4. Rabindranath Tagore

Question ID : 7518974171
Option 1 ID : 75189716683
Option 2 ID : 75189716684
Option 3 ID : 75189716681
Option 4 ID : 75189716682
Status : Answered
Chosen Option : 4

Q.86 Match the following:

Natural source	Acid
i. Vinegar	a. Oxalic acid
ii. Tomato	b. Citric acid
iii. Orange	c. Acetic acid

- Ans
- 1. i-c, ii-a, iii-b
 - 2. i-a, ii-c, iii-b
 - 3. i-a, ii-b, iii-c
 - 4. i-c, ii-b, iii-a

Question ID : 7518973639
Option 1 ID : 75189714555
Option 2 ID : 75189714556
Option 3 ID : 75189714553
Option 4 ID : 75189714554
Status : Answered
Chosen Option : 1

Q.87 A statement is given followed by two possible underlying assumptions I and II. Read all the information carefully and decide which of the given assumptions can be assumed by the given statement.

Statement:

Doctors suggest that for people who are deficient in Vitamin C and have a weakened digestive system, it is better to take Vitamin C supplements than to eat citrus fruits rich in Vitamin C.

Assumptions:

- I. Anyone suffering from indigestion issues should stop eating citrus fruits.
- II. The end result of both citric fruits and Vitamin C supplements is more or less similar

- Ans**
- 1. Neither I nor II can be assumed
 - 2. Only II can be assumed
 - 3. Only I can be assumed
 - 4. Both I and II can be assumed

Question ID : 7518976766
Option 1 ID : 75189727064
Option 2 ID : 75189727062
Option 3 ID : 75189727061
Option 4 ID : 75189727063
Status : Answered
Chosen Option : 2

Q.88 Find the greatest number by which when the numbers 57, 95 and 211 are divided, it leaves the same remainder in each case.

- Ans**
- 1. 3
 - 2. 1
 - 3. 2
 - 4. 4

Question ID : 7518976039
Option 1 ID : 75189724155
Option 2 ID : 75189724153
Option 3 ID : 75189724154
Option 4 ID : 75189724156
Status : Not Answered
Chosen Option : --

Q.89 What day of the week was 26 January 2003?

- Ans**
- 1. Saturday
 - 2. Sunday
 - 3. Friday
 - 4. Monday

Question ID : 7518976419
Option 1 ID : 75189725674
Option 2 ID : 75189725675
Option 3 ID : 75189725673
Option 4 ID : 75189725676
Status : Not Answered
Chosen Option : --

Q.90 If '+' means '+', '-' means '×', '×' means '+', '+' means '-', what will come in place of the question mark (?) in the following equation?

$$9 + 3 \times 21 + 7 - 17 = ?$$

- Ans
- 1. 33
 - 2. 57
 - 3. 116
 - 4. 53

Question ID : 7518974882
Option 1 ID : 75189719526
Option 2 ID : 75189719528
Option 3 ID : 75189719527
Option 4 ID : 75189719525
Status : Answered
Chosen Option : 2

Q.91 Find the total surface area of a closed cuboid whose length, breadth and height are 16 cm, 12 cm, and 8 cm, respectively.

- Ans
- 1. 832 cm^2
 - 2. 382 cm^2
 - 3. 238 cm^2
 - 4. 823 cm^2

Question ID : 7518975977
Option 1 ID : 75189723907
Option 2 ID : 75189723906
Option 3 ID : 75189723908
Option 4 ID : 75189723905
Status : Answered
Chosen Option : 1

Q.92 The equation $2x^2 + 7x + 6 = 0$ can be written as:

- Ans
- 1. $(2x - 3)(x - 2) = 0$
 - 2. $(2x + 3)(x - 2) = 0$
 - 3. $(2x - 3)(x + 2) = 0$
 - 4. $(2x + 3)(x + 2) = 0$

Question ID : 7518975946
Option 1 ID : 75189723783
Option 2 ID : 75189723784
Option 3 ID : 75189723781
Option 4 ID : 75189723782
Status : Answered
Chosen Option : 4

Q.93 Which social sector organization has the vision and mission of 'every child in school and learning well' as of July 2022?

- Ans
- 1. Pratham
 - 2. Care India
 - 3. Goonj
 - 4. Nanhi Kali

Question ID : 7518976548
Option 1 ID : 75189726189
Option 2 ID : 75189726192
Option 3 ID : 75189726190
Option 4 ID : 75189726191
Status : Answered
Chosen Option : 3

Q.94 If $a^2 + b^2 = 50$ and $a \times b = 7$. Find $\frac{(a-b)}{(a+b)}$, where $a > b$.

- Ans
- 1. $\frac{3}{4}$
 - 2. $\frac{5}{3}$
 - 3. $\frac{4}{3}$
 - 4. $\frac{3}{5}$



Question ID : 7518976020
Option 1 ID : 75189724077
Option 2 ID : 75189724080
Option 3 ID : 75189724079
Option 4 ID : 75189724078
Status : Answered
Chosen Option : 1

Q.95 An object is placed at a distance of 24 cm in front of a convex mirror. Its image is formed at a distance at 12 cm behind the mirror. The focal length of the mirror is:

- Ans
- 1. -8 cm
 - 2. 8 cm
 - 3. -24 cm
 - 4. 24 cm

Question ID : 7518976599
Option 1 ID : 75189726393
Option 2 ID : 75189726394
Option 3 ID : 75189726395
Option 4 ID : 75189726396
Status : Answered
Chosen Option : 1

Q.96 Select the option that represents the letters that, when placed from left to right in the blanks below, will complete the letter series.

P _ Q _ P _ M _ Q _ P _ Q _ P

- Ans**
- 1. MPPQQQM
 - 2. MQPQPQM
 - 3. MQPQPMQ
 - 4. MPQPQM

Question ID : 7518977341

Option 1 ID : 75189729361

Option 2 ID : 75189729362

Option 3 ID : 75189729363

Option 4 ID : 75189729364

Status : **Not Attempted and Marked For Review**

Chosen Option : --

Q.97 The cost of two chairs and three tables is ₹1,450. If a chair costs ₹250 less than a table, then find the cost of one table.

- Ans**
- 1. ₹390
 - 2. ₹440
 - 3. ₹320
 - 4. ₹350

Question ID : 7518975925

Option 1 ID : 75189723698

Option 2 ID : 75189723699

Option 3 ID : 75189723700

Option 4 ID : 75189723697

Status : **Answered**

Chosen Option : 4

Q.98 Village A has a population of 72,000, which is decreasing at the rate of 1,000 per year. Village B has a population of 54,000, which is increasing at the rate of 800 per year. In how many years will the population of both the villages be the same?

- Ans**
- 1. 7
 - 2. 10
 - 3. 12
 - 4. 15

Question ID : 7518976022

Option 1 ID : 75189724085

Option 2 ID : 75189724086

Option 3 ID : 75189724087

Option 4 ID : 75189724088

Status : **Answered**

Chosen Option : 2

Q.99 'Amrita Devi Bishnoi National Award for Wildlife Conservation' is given in the memory of Amrita Devi Bishnoi. She sacrificed her life to save which trees and where?

- Ans**
- 1. Khejri trees, Rajasthan
 - 2. Sal trees, West Bengal
 - 3. Khejri trees, West Bengal
 - 4. Sal trees, Rajasthan

Question ID : 7518974698
Option 1 ID : 75189718789
Option 2 ID : 75189718790
Option 3 ID : 75189718792
Option 4 ID : 75189718791
Status : Answered
Chosen Option : 1

Q.100 Which of the following numbers will replace the question mark (?) in the given series?

12, 17, 32, 57, 92, ?

- Ans**
- 1. 157
 - 2. 122
 - 3. 137
 - 4. 112

Question ID : 7518975286
Option 1 ID : 75189721144
Option 2 ID : 75189721142
Option 3 ID : 75189721143
Option 4 ID : 75189721141
Status : Not Answered
Chosen Option : --