



SSC CHSL TIER – I – Shift - 1 - 02-08-2023

-  **Latest Govt Job updates**
-  **Private Job updates**
-  **Free Mock tests available**

Visit - teachingninja.in

Combined Higher Secondary Level Examination 2023 Tier I

Roll Number	
Candidate Name	
Venue Name	
Exam Date	02/08/2023
Exam Time	9:00 AM - 10:00 AM
Subject	CHSL Exam 2023 Tier I

Section : English Language

Q.1 Select the most appropriate option to substitute the underlined segment in the following sentence.

With the harsh words of the boss, Srujan felt sad, but his colleague's words created insult to injury.

- Ans
- 1. attached insult to injury
 - 2. provoked insult to injury
 - 3. added injury to insult
 - 4. added insult to injury

Question ID : 264330144382
Status : Answered
Chosen Option : 4

Q.2 Select the option that correctly expresses the following sentence in passive voice.

The child will recite the poem.

- Ans
- 1. By child poem will be recited.
 - 2. The poem will be recited by the child.
 - 3. The poem is recited by the child.
 - 4. The poem will recite by the child.

Question ID : 264330144333
Status : Answered
Chosen Option : 2

Q.3 Parts of the following sentence have been given as options. Select the option that contains an error.

You need to acknowledge the itinary and accommodation details of your journey as per the given calendar.

- Ans
- 1. calendar
 - 2. accommodation
 - 3. acknowledge
 - 4. itinary

Question ID : 264330144267
Status : Answered
Chosen Option : 4

Q.4 Choose the correct meaning of the underlined word in the given sentence.
When I was in Class 5, I won the first prize in extempore at my school.

- Ans
- 1. A short piece of writing on a subject
 - 2. A sports event
 - 3. A speech delivered without prior preparation or rehearsal
 - 4. A dramatic performance on stage

Question ID : 264330150530
Status : Answered
Chosen Option : 3

Q.5 Parts of a sentence are given below in jumbled order. Arrange the parts in the correct order to form a meaningful sentence.

- A. fell before me
- B. a carcass of an animal
- C. when suddenly
- D. my heart skipped a beat

- Ans
- 1. BACD
 - 2. CDBA
 - 3. ABCD
 - 4. DCBA

Question ID : 264330149917
Status : Answered
Chosen Option : 4

Q.6 Sentences of a paragraph are given below in jumbled order. Arrange the sentences in the correct order to form a meaningful and coherent paragraph.

- A) So then why are not Silicon Valley entrepreneurs clamouring to decode the ancient wisdom?
- B) The failure rate in finding a new drug is as high as 95%.
- C) Because these once-thriving cultures are now reduced to an endangered tribe.
- D) According to industry data, it takes \$2.6 billion and, on average, fourteen years to develop a new drug.

- Ans
- 1. BADC
 - 2. DCBA
 - 3. DBAC
 - 4. ACDB

Question ID : 264330149907
Status : Answered
Chosen Option : 3

Q.7 Select the most appropriate synonym of the given word.
Resentment

- Ans
- 1. Calmness
 - 2. Happiness
 - 3. Anger
 - 4. Relaxation

Question ID : 264330149865
Status : Answered
Chosen Option : 3

Q.8 Select the option with the correct spelling that can replace the underlined word in the given sentence.

Kasturi acts as a liason between patients and staff.

- Ans
- 1. liaision
 - 2. laision
 - 3. liaison
 - 4. liaisan

Question ID : 264330143124
Status : Answered
Chosen Option : 1

Q.9 Select the most appropriate ANTONYM of the given word.

Meagre

- Ans
- 1. Regional
 - 2. Racial
 - 3. Stupid
 - 4. Generous

Question ID : 264330143180
Status : Answered
Chosen Option : 3

Q.10 Select the most appropriate synonym for the underlined word in the following sentence.

The politician's pompous rhetoric during the campaign failed to garner much support from the public.

- Ans
- 1. Conciliatory
 - 2. Benign
 - 3. Supercilious
 - 4. Diplomatic

Question ID : 264330143941
Status : Answered
Chosen Option : 2

Q.11 Parts of a sentence are given below in jumbled order. Select the option that arranges the parts in the correct order to form a meaningful sentence.

- A. In accordance with hierarchical status
- B. Of the services rendered
- C. Rewards are given
- D. And are not related to the economic value

- Ans
- 1. A, B, D, C
 - 2. A, D, B, C
 - 3. C, A, D, B
 - 4. C, B, A, D

Question ID : 264330142616
Status : Answered
Chosen Option : 3

Q.12 Select the option that expresses the given sentence in positive degree of comparison.

She is the dullest child in the class.

- Ans
- 1. She is very duller in the class.
 - 2. Dullest child in the class is she.
 - 3. No other child in the class is as dull as she.
 - 4. In the class of all she is dull.

Question ID : 264330143882
Status : Answered
Chosen Option : 3

Q.13 Select the most appropriate ANTONYM of the underlined word.
Wealthier countries are obligated to fulfil a commitment made in the Paris Agreement to provide \$100 billion a year in international climate finance.

- Ans
- 1. feeble
 - 2. drape
 - 3. breach
 - 4. hale

Question ID : 264330143657
Status : Answered
Chosen Option : 2

Q.14 Select the most appropriate idiom for the underlined segment in the following sentence.

Brave people never hide at the moment of decision.

- Ans
- 1. When the crunch comes
 - 2. Beat the clock
 - 3. A hell of time
 - 4. Turn back the hands of time

Question ID : 264330149551
Status : Answered
Chosen Option : 1

Q.15 Select the option that expresses the given sentence in active voice.
French is taught to us by Miss Glenn.

- Ans
- 1. Miss Glenn taught us French.
 - 2. Miss Glenn teach us French.
 - 3. Miss Glenn teaches us French.
 - 4. Miss Glenn is teaching us French.

Question ID : 264330144893
Status : Answered
Chosen Option : 3

Q.16 Select the option that will improve the underlined part of the given sentence.
Adyasha would have been looked gorgeous in ethnic apparel.

- Ans
- 1. was looked
 - 2. would have looked
 - 3. had looking
 - 4. would be looked

Question ID : 264330149913
Status : Answered
Chosen Option : 1

Q.17 The following sentence has been split into four segments. Identify the segment that contains a grammatical error.
Babbal is / a oldest member / in our / Black Ice Club.

- Ans
- 1. in our
 - 2. Black Ice Club
 - 3. Babbal is
 - 4. a oldest member

Question ID : 264330144889
Status : Answered
Chosen Option : 4

Q.18 Parts of a sentence are given below in jumbled order, except the first part. Arrange the parts in the correct order to form a meaningful sentence.

Such poststructuralist pronouncements...
A. not only in the Anglo-American academia
B. on the literature of the Third World,
C. however, are a common feature of the literary theory practiced
D. but also in the Third-World countries

- Ans
- 1. ABCD
 - 2. ADCB
 - 3. BCAD
 - 4. CABD

Question ID : 264330149909
Status : Answered
Chosen Option : 3

Q.19 Select the most appropriate ANTONYM of the given word.
Fundamental

- Ans
- 1. Impact
 - 2. Neutral
 - 3. Least
 - 4. Link

Question ID : 264330143653
Status : Answered
Chosen Option : 3

Q.20 Select the most appropriate homophone to fill in the blank.
Even animals find it difficult to _____ the loss of their loved ones.

- Ans
- 1. bear
 - 2. wear
 - 3. where
 - 4. bare

Question ID : 264330149758
Status : Answered
Chosen Option : 1

Comprehension:

In the following passage, some words have been deleted. Read the passage carefully and select the most appropriate option to fill in each blank.
Unemployment arises from a variety of _____ (1). One which is always recurring and the effects of which we have had a recent example, is the disorganisation of industry resulting from a long war; this is a serious _____ (2) admitting of no easy _____ (3) at the best of times. Again there is the unemployment which followed a marked diminution in the _____ (4) of any raw product, such as cotton; fewer hands are required in the mills and the factories. We may call this cause of bad harvests. Similar, but more serious is the effect of changes in industry due to the invention of machinery which does more work and require _____ (5) hands. Yet another cause is strike or lockout and this is more to be deplored because such a stoppage is due to a very trivial matter, perhaps the men are working half an hour longer than what their Union permits.

SubQuestion No : 21

Q.21 Select the most appropriate option to fill in blank number 1.

- Ans
- 1. causes
 - 2. thoughts
 - 3. things
 - 4. types

Question ID : 264330147565
Status : Answered
Chosen Option : 1

Comprehension:

In the following passage, some words have been deleted. Read the passage carefully and select the most appropriate option to fill in each blank.
Unemployment arises from a variety of _____ (1). One which is always recurring and the effects of which we have had a recent example, is the disorganisation of industry resulting from a long war; this is a serious _____ (2) admitting of no easy _____ (3) at the best of times. Again there is the unemployment which followed a marked diminution in the _____ (4) of any raw product, such as cotton; fewer hands are required in the mills and the factories. We may call this cause of bad harvests. Similar, but more serious is the effect of changes in industry due to the invention of machinery which does more work and require _____ (5) hands. Yet another cause is strike or lockout and this is more to be deplored because such a stoppage is due to a very trivial matter, perhaps the men are working half an hour longer than what their Union permits.

SubQuestion No : 22

Q.22 Select the most appropriate option to fill in blank number 2.

- Ans
- 1. difference
 - 2. discussion
 - 3. nature
 - 4. problem

Question ID : 264330147566
Status : Answered
Chosen Option : 4

Comprehension:

In the following passage, some words have been deleted. Read the passage carefully and select the most appropriate option to fill in each blank.

Unemployment arises from a variety of _____ (1). One which is always recurring and the effects of which we have had a recent example, is the disorganisation of industry resulting from a long war; this is a serious _____ (2) admitting of no easy _____ (3) at the best of times. Again there is the unemployment which followed a marked diminution in the _____ (4) of any raw product, such as cotton; fewer hands are required in the mills and the factories. We may call this cause of bad harvests. Similar, but more serious is the effect of changes in industry due to the invention of machinery which does more work and require _____ (5) hands. Yet another cause is strike or lockout and this is more to be deplored because such a stoppage is due to a very trivial matter, perhaps the men are working half an hour longer than what their Union permits.

SubQuestion No : 23

Q.23 Select the most appropriate option to fill in blank number 3.

- Ans
- 1. key
 - 2. clue
 - 3. answer
 - 4. solution

Question ID : 264330147567
Status : Answered
Chosen Option : 4

Comprehension:

In the following passage, some words have been deleted. Read the passage carefully and select the most appropriate option to fill in each blank.

Unemployment arises from a variety of _____ (1). One which is always recurring and the effects of which we have had a recent example, is the disorganisation of industry resulting from a long war; this is a serious _____ (2) admitting of no easy _____ (3) at the best of times. Again there is the unemployment which followed a marked diminution in the _____ (4) of any raw product, such as cotton; fewer hands are required in the mills and the factories. We may call this cause of bad harvests. Similar, but more serious is the effect of changes in industry due to the invention of machinery which does more work and require _____ (5) hands. Yet another cause is strike or lockout and this is more to be deplored because such a stoppage is due to a very trivial matter, perhaps the men are working half an hour longer than what their Union permits.

SubQuestion No : 24

Q.24 Select the most appropriate option to fill in blank number 4.

- Ans
- 1. material
 - 2. quality
 - 3. quantity
 - 4. cloth

Question ID : 264330147568
Status : Answered
Chosen Option : 3

Comprehension:

In the following passage, some words have been deleted. Read the passage carefully and select the most appropriate option to fill in each blank.

Unemployment arises from a variety of _____ (1). One which is always recurring and the effects of which we have had a recent example, is the disorganisation of industry resulting from a long war; this is a serious _____ (2) admitting of no easy _____ (3) at the best of times. Again there is the unemployment which followed a marked diminution in the _____ (4) of any raw product, such as cotton; fewer hands are required in the mills and the factories. We may call this cause of bad harvests. Similar, but more serious is the effect of changes in industry due to the invention of machinery which does more work and require _____ (5) hands. Yet another cause is strike or lockout and this is more to be deplored because such a stoppage is due to a very trivial matter, perhaps the men are working half an hour longer than what their Union permits.

SubQuestion No : 25

Q.25 Select the most appropriate option to fill in blank number 5.

- Ans 1. fewer
 2. more
 3. many
 4. a lot of

Question ID : 264330147569
Status : Answered
Chosen Option : 1

Section : General Intelligence

Q.1 In the following number-pairs, the second number is obtained by applying certain mathematical operations to the first number. Select the set in which the numbers are related in the same way as are the numbers of the following sets.

(NOTE: Operations should be performed on the whole numbers, without breaking down the numbers into its constituent digits. E.g. 13 – Operations on 13 such as adding / subtracting / multiplying etc. to 13 can be performed. Breaking down 13 into 1 and 3 and then performing mathematical operations on 1 and 3 is not allowed.)

(21, 66)

(32, 99)

- Ans 1. (25, 81)
 2. (36, 112)
 3. (45, 138)
 4. (24, 77)

Question ID : 264330147001
Status : Answered
Chosen Option : 3

Q.2 DHJ is related to AEG in a certain way based on the English alphabetical order. In the same way, ZML is related to WJI. To which of the following is EKQ related following the same logic?

- Ans 1. HNT
 2. DJK
 3. BHN
 4. QKE

Question ID : 264330152075
Status : Answered
Chosen Option : 3

Q.3 Select the number from among the given options that can replace the question mark (?) in the following series.

383, 381, 377, 369, 353, ?

- Ans
- 1. 325
 - 2. 323
 - 3. 322
 - 4. 321

Question ID : 264330146893
Status : Answered
Chosen Option : 4

Q.4 Select the set in which the numbers are related in the same way as are the numbers of the following sets.

(NOTE: Operations should be performed on the whole numbers, without breaking down the numbers into its constituent digits. E.g. 13 – Operations on 13 such as adding / subtracting / multiplying etc. to 13 can be performed. Breaking down 13 into 1 and 3 and then performing mathematical operations on 1 and 3 is not allowed.)

(12, 11, 137)

(17, 21, 362)

- Ans
- 1. (18, 9, 165)
 - 2. (14, 31, 440)
 - 3. (21, 25, 530)
 - 4. (38, 7, 270)

Question ID : 264330147016
Status : Answered
Chosen Option : 3

Q.5 In a certain code language,

A + B means 'A is the father of B'

A – B means 'A is the wife of B'

A × B means 'A is the brother of B'

A ÷ B means 'A is the mother of B'

Based on the above, how is G related to K if 'G ÷ H × I – J + K'?

- Ans
- 1. Mother's mother
 - 2. Father's sister
 - 3. Mother
 - 4. Father's mother

Question ID : 264330152011
Status : Answered
Chosen Option : 1

Q.6 Select the term from the given options that can replace the question mark (?) in the given series to make it logically complete.
BO 88, ?, HU 80, KX 76, NA 72

- Ans
- 1. DS 86
 - 2. DR 82
 - 3. ER 84
 - 4. ES 86

Question ID : 264330147493
Status : Answered
Chosen Option : 3

Q.7 If 'A' stands for '+', 'B' stands for 'x', 'C' stands for '+' and 'D' stands for '-', what will come in place of the question mark (?) in the following equation?

114 C 85 A 5 B 4 D 33 = ?

- Ans
- 1. 151
 - 2. 149
 - 3. 138
 - 4. 143

Question ID : 264330146421
Status : Answered
Chosen Option : 2

Q.8 The position of how many letters will remain unchanged if each letter in the word AMPLIFY is arranged in alphabetical order?

- Ans
- 1. Three
 - 2. Two
 - 3. Four
 - 4. One



Question ID : 264330146632
Status : Answered
Chosen Option : 1

Q.9 Select the correct mirror image of the given figure when the mirror is placed at MN as shown below.

M
6 H D E a 3
|
N

- Ans
- 1. 3 a E D H 6
 - 2. 6 H D E a 3
 - 3. 6 H D E a 3
 - 4. 3 a E D H 6

Question ID : 264330146711
Status : Answered
Chosen Option : 1

Q.10 Which of the following interchanges in two mathematical operators will balance the equation given below?
 $75 \div 15 \times 8 + 14 - 5 = 67$

- Ans
- 1. \div and \times
 - 2. $-$ and \div
 - 3. $-$ and \times
 - 4. $+$ and $-$

Question ID : 264330150913
Status : Answered
Chosen Option : 3

Q.11 Read the given statements and conclusions carefully. You have to take the given statements to be true even if they seem to be at variance from commonly known facts. You have to decide which conclusion/s logically follow/s from the given statements.

Statements: All elephants are tigers. All tigers are horses. No horse is a camel.

Conclusion (I): Some horses are elephants.

Conclusion (II): Some camels are tigers.

- Ans
- 1. Only conclusion I follows.
 - 2. Both conclusions I and II follow.
 - 3. Only conclusion II follows.
 - 4. Neither conclusion I nor II follows.

Question ID : 264330152018
Status : Answered
Chosen Option : 1

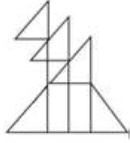
Q.12 Three of the following four are alike in a certain way and thus form a group. Which is the one that does NOT belong to that group?

(NOTE: Operations should be performed on the whole numbers, without breaking down the numbers into its constituent digits. E.g., 13 – Operations on 13 such as adding /subtracting /multiplying etc. to 13 can be performed. Breaking down 13 into 1 and 3 and then performing mathematical operations on 1 and 3 is not allowed)

- Ans
- 1. $46 - 41 - 12$
 - 2. $16 - 9 - 21$
 - 3. $23 - 18 - 15$
 - 4. $34 - 28 - 18$

Question ID : 264330152053
Status : Answered
Chosen Option : 1

Q.13 Identify the number of triangles in the given figure.



Ans 1. 10

2. 7

3. 8

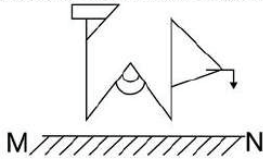
4. 9

Question ID : 264330151074

Status : Answered

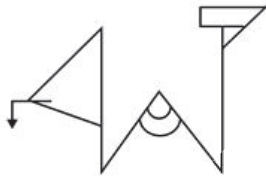
Chosen Option : 4

Q.14 Select the correct mirror image of the given figure when the mirror is placed at MN as shown.

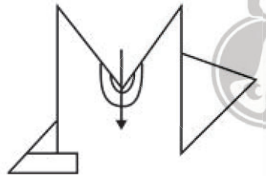


Ans

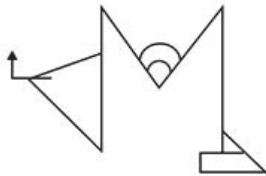
1.



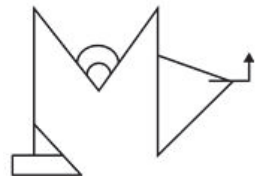
2.



3.



4.



Question ID : 264330146493

Status : Answered

Chosen Option : 4

Q.15 Which of the following letter-clusters will replace the question mark (?) in the given series to make it logically complete?

EY 14, ?, IW 20, KV 24, MU 26

- Ans**
- 1. GY 19
 - 2. HZ 18
 - 3. GX 18
 - 4. HY 19

Question ID : 264330147257
Status : Answered
Chosen Option : 3

Q.16 In a certain code language, 'RESENT' is written as 'TGUCLR' and 'PEOPLE' is written as 'RGQNJ'. How is 'PERSON' written in the given language?

- Ans**
- 1. RGTQML
 - 2. RGTQMP
 - 3. RGSUQL
 - 4. RGTUQP

Question ID : 264330147319
Status : Answered
Chosen Option : 1

Q.17 Which letter-cluster should come in place of ? in the given series based on the English alphabetical order?
GBW, EZX, CXY, AVZ, ?

- Ans**
- 1. ZTB
 - 2. YTA
 - 3. XSB
 - 4. XRC

Question ID : 264330150469
Status : Answered
Chosen Option : 2

Q.18 In a certain code language, 'will come back' is written as 'mp rq pl' and 'back to school' is written as 'jn st mp'. How is 'back' written in the given language?

- Ans**
- 1. pl
 - 2. rq
 - 3. jn
 - 4. mp

Question ID : 264330147183
Status : Answered
Chosen Option : 4

Q.19 If 17 April 1992 is Friday, then what will be the day of the week on 10 October 1993?

- Ans**
- 1. Sunday
 - 2. Wednesday
 - 3. Monday
 - 4. Tuesday

Question ID : 264330147086
Status : Answered
Chosen Option : 1

Q.20 Select the number from among the given options that can replace the question mark (?) in the following series.

13, 24, 46, 90, 178, ?

- Ans**
- 1. 358
 - 2. 352
 - 3. 354
 - 4. 356

Question ID : 264330146901
Status : Answered
Chosen Option : 3

Q.21 Based on the alphabetical order, three of the following four are alike in a certain way and thus form a group. Which is the one that does NOT belong to that group?

- Ans**
- 1. TVR
 - 2. DFB
 - 3. WYU
 - 4. MZK

Question ID : 264330146655
Status : Answered
Chosen Option : 4

Q.22 Find out the correct alternative that when filled in the blanks in the same sequence will make the series logically complete.

G,MA _VOY KTQ MR,U O,US

- Ans**
- 1. XGVSP
 - 2. XIWSP
 - 3. XOWSO
 - 4. XGWTQ

Question ID : 264330146622
Status : Answered
Chosen Option : 2

Q.23 L is the sister of G. G is the son of M. M is married to D. D is the sister of E. E is the son of C. C is married to S. S is the sister of P.
How is L related to E?

- Ans**
- 1. Wife's sister
 - 2. Brother's daughter
 - 3. Sister's daughter
 - 4. Daughter

Question ID : 264330146095
Status : Answered
Chosen Option : 3

Q.24 Four number pairs have been given out of which three are alike in some manner and one is different. Select the one that is different.

(NOTE : Operations should be performed on the whole numbers, without breaking down the numbers into its constituent digits. E.g. 13 – Operations on 13 such as adding /deleting /multiplying etc. to 13 can be performed. Breaking down 13 into 1 and 3 and then performing mathematical operations on 1 and 3 is not allowed.)

- Ans**
- 1. $46 - 141$
 - 2. $55 - 168$
 - 3. $35 - 108$
 - 4. $29 - 88$

Question ID : 264330152443
Status : Answered
Chosen Option : 4



Q.25 Identify the figure given in the options that when put in place of the question mark (?) will logically complete the series.

8	3	△	0	V	X	8	3	0	△	D	V	?
X	V		△	3		V	D		0	3		
0		D	D		8	△	X	X		8		

Ans

✓ 1.

8	3	△
	D	X
0		V

✗ 2.

V	△	D
	X	0
8		3

✗ 3.

8	3	△
	X	0
D		V

✗ 4.

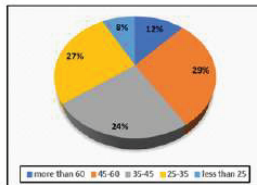
8	△	X
	V	D
0		3



Question ID : 264330151188
 Status : Not Attempted and Marked For Review
 Chosen Option : --

Section : Quantitative Aptitude

- Q.1** Study the given pie-chart and table and answer the question that follows.
The pie-chart shows the percentage distribution of age groups of visitors to a park in a month.



The table shows the male, female distribution of the visitors in terms of the percentage.

Age	Male Percentage	Female Percentage
More than 60	58	42
45-60	80	20
35-45	81	19
25-35	60	40
Less than 25	45	55

If 2000 male visitors and 1500 female visitors were there in all, then the ratio of the number of male visitors in the age group 25-35, to the female visitors of the age group 45-60 is:

- Ans**
- 1. 71 : 45
 - 2. 57 : 41
 - 3. 63 : 47
 - 4. 81 : 29

Question ID : 264330149777

Status : **Not Attempted and Marked For Review**

Chosen Option : --

- Q.2** A shopkeeper marks his goods at 80% more than their cost price and allows a discount of 48% on the marked price. His loss percentage is:

- Ans**
- 1. $2\frac{1}{5}\%$
 - 2. $7\frac{3}{5}\%$
 - 3. $6\frac{2}{5}\%$
 - 4. $3\frac{1}{5}\%$

Question ID : 264330148394

Status : **Answered**

Chosen Option : 3

Q.3 The three sides of a triangle are 9, 24 and S units. Which of the following is correct?

- Ans
- ✓ 1. $15 < S < 33$
 - ✗ 2. $15 \leq S < 33$
 - ✗ 3. $15 < S \leq 33$
 - ✗ 4. $15 \leq S \leq 33$

Question ID : 264330148860
Status : Answered
Chosen Option : 1

Q.4 If $2x + \frac{2}{x} = 5$, then the value of $(x^3 + \frac{1}{x^3} + 2)$ will be:

- Ans
- ✗ 1. $\frac{81}{11}$
 - ✗ 2. $\frac{81}{7}$
 - ✗ 3. $\frac{71}{8}$
 - ✓ 4. $\frac{81}{8}$

Question ID : 264330147847
Status : Answered
Chosen Option : 4

Q.5 Bhushan's monthly income is ₹45,000 and his monthly expenditure is ₹33,000. If his monthly income is increased by 22% while monthly expenditure is increased by 11%, then what is his new monthly savings (in ₹)?

- Ans
- ✓ 1. 18,270
 - ✗ 2. 18,690
 - ✗ 3. 18,000
 - ✗ 4. 19,000

Question ID : 264330147891
Status : Answered
Chosen Option : 1

Q.6 If $x + \frac{1}{x} = 7$, then the value of $x^2 + \frac{1}{x^2}$ is:

- Ans
- ✗ 1. 49
 - ✗ 2. 51
 - ✓ 3. 47
 - ✗ 4. 5

Question ID : 264330147879
Status : Answered
Chosen Option : 3

Q.7 Two circles of radii 12 cm and 13 cm are concentric. The length of the chord of the larger circle which touches the smaller circle is:

- Ans
- 1. 8 cm
 - 2. 18 cm
 - 3. 10 cm
 - 4. 12cm

Question ID : 264330146533
Status : Answered
Chosen Option : 3

Q.8 If $\sin A + \sin^2 A = 1$, then the value of the expression $(\cos^2 A + \cos^4 A)$ is _____.

- Ans
- 1. $\frac{3}{2}$
 - 2. 1
 - 3. 2
 - 4. $\frac{1}{2}$

Question ID : 264330146460
Status : Answered
Chosen Option : 2

Q.9 The average age of 6 members of a family is 25 years. If the youngest member is 4 years old, then what was the average age of family just before the birth of the youngest member?

- Ans
- 1. 27.2 years
 - 2. 24.8 years
 - 3. 32.8 years
 - 4. 25.2 years

Question ID : 264330149943
Status : Answered
Chosen Option : 4

Q.10 If $\cot \theta = \frac{9}{17}$, find the value of $\operatorname{cosec}^2 \theta$.

- Ans
- 1. $1 \frac{9}{17}$
 - 2. $\frac{208}{289}$
 - 3. $\frac{8}{17}$
 - 4. $1 \frac{81}{289}$

Question ID : 264330146835
Status : Answered
Chosen Option : 4

Q.11 How long (in years) will a sum of money invested at 6% per annum simple interest to increase its value by 40%?

Ans

1. $6\frac{2}{3}$

2. $5\frac{2}{3}$

3. $6\frac{1}{3}$

4. $4\frac{1}{3}$

Question ID : 264330148043

Status : Answered

Chosen Option : 1

Q.12 A tangent AB at point A of a circle of radius 6 cm meets a line through the centre O at point B. If OB = 10 cm, then the length of AB (in cm) is equal to:

Ans

1. 5

2. 6

3. 4

4. 8

Question ID : 264330148829

Status : Answered

Chosen Option : 4

Q.13 Suhas, a 3.15 m tall tree, and an 11.25 m tall building are positioned such that their feet on the ground are collinear and the tree is located between Suhas and the building. The tree is located at a distance of 45 m from the building. Further, the eyes of Suhas, the top of the tree, and the top of the building fall in one line, and the eyes of Suhas are at a height of 1.8 m from the ground. At what distance (in m) from Suhas is the tree located?

Ans

1. 6

2. 5

3. 7.5

4. 9

Question ID : 264330146819

Status : Answered

Chosen Option : 3

Q.14 Find the third proportional of 25 and 45.

Ans

1. 85

2. 65

3. 81

4. 76

Question ID : 264330147929

Status : Answered

Chosen Option : 3

Q.15 Study the given table and answer the question that follows.
The table indicates the number of students studying in three disciplines in four different colleges.

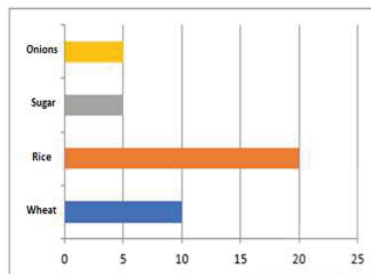
Disciplines	Colleges			
	A	B	C	D
Commerce	520	550	515	690
Management	212	234	289	390
Agriculture	234	567	456	876

Which college has the minimum number of students in Commerce?

- Ans**
- 1. A
 - 2. B
 - 3. C
 - 4. D

Question ID : 264330147830
Status : Answered
Chosen Option : 3

Q.16 The following bar graph indicates the sales of various items in a shop for one day.
Study the bar graph carefully and answer the question that follows.



Find the ratio between the sale of wheat and rice and also the ratio between the sale of sugar and onions, respectively.

- Ans**
- 1. 1 : 2 and 1 : 1
 - 2. 1 : 1 and 2 : 1
 - 3. 2 : 1 and 1 : 2
 - 4. 1 : 1 and 1 : 1

Question ID : 264330147765
Status : Answered
Chosen Option : 1

Q.17 If a right circular cone of height 24 cm has the circumference of its base 42π cm, then the volume of the cone is

(use $\pi = \frac{22}{7}$):

- Ans**
- 1. 15211 cm^3
 - 2. 11088 cm^3
 - 3. 12034 cm^3
 - 4. 21011 cm^3

Question ID : 264330148015
Status : Answered
Chosen Option : 2

Q.18 A dishonest shopkeeper professes to sell grains at the cost price, but he uses a weight of 920 gm for 1 kg weight. Find his gain percentage (round up to two decimal places).

- Ans**
- 1. 7.90%
 - 2. 8.70%
 - 3. 8.50%
 - 4. 7.80%

Question ID : 264330147623
Status : Answered
Chosen Option : 2

Q.19 A can finish a work in 15 days, B can finish the same work in 25 days. They work together for 5 days. The rest of the work is finished by A and C in 4 days. Then C alone can finish the work in:

- Ans**
- 1. 18 days
 - 2. 24 days
 - 3. 20 days
 - 4. 21 days

Question ID : 264330149773
Status : Answered
Chosen Option : 3

Q.20 Zeean and Nasreen participate in a circular race of 1.2 km. They start the race at a speed of 18 km/h and 27 km/h, respectively, from the same point at the same time. After how much time (in minutes) will they meet at the starting point for the first time, if they are running in the same direction?

- Ans**
- 1. 9
 - 2. 7
 - 3. 10
 - 4. 8

Question ID : 264330150546
Status : Answered
Chosen Option : 4

Q.21 Which of the following numbers is NOT divisible by 11?

- Ans
- 1. 1735624
 - 2. 752563
 - 3. 1661308
 - 4. 1904529

Question ID : 264330148127
Status : Answered
Chosen Option : 2

Q.22 In a show room, the marked prices of various items are displayed in such a manner that after giving a 10% discount to the customers, the owner of the show room earns a profit of 20%. What is the ratio of the marked price and cost price of each item?

- Ans
- 1. 3 : 4
 - 2. 4 : 3
 - 3. 5 : 2
 - 4. 2 : 5

Question ID : 264330147701
Status : Answered
Chosen Option : 2

Q.23 If $5x + 3y = 15$ and $2xy = 6$, then the value of $5x - 3y$ is:

- Ans
- 1. $3\sqrt{3}$
 - 2. $3\sqrt{5}$
 - 3. $3\sqrt{2}$
 - 4. $3\sqrt{4}$

Question ID : 264330148223
Status : Answered
Chosen Option : 2

Q.24 $\frac{\cos\theta}{\sec\theta-1} + \frac{\cos\theta}{\sec\theta+1}$ is equal to :

- Ans
- 1. $2\sec^2\theta$
 - 2. $2\cot^2\theta$
 - 3. $2\cos^2\theta$
 - 4. $2\sin^2\theta$

Question ID : 264330147947
Status : Answered
Chosen Option : 2

Q.25 A certain amount of money was lent for a period of 1 year 9 months at a rate of 10% per annum compounded annually. If the compound interest is ₹1,460, find the amount of money lent.

- Ans**
- 1. ₹8,200
 - 2. ₹7,500
 - 3. ₹6,000
 - 4. ₹8,000

Question ID : 264330150967
Status : Answered
Chosen Option : 4

Section : General Awareness

Q.1 Who was awarded the Nobel Prize in Physics in 1909 along with Karl Ferdinand Braun for the development of practical wireless telegraphy?

- Ans**
- 1. Heinrich Rudolf Hertz
 - 2. John Michell
 - 3. Wilhelm Rontgen
 - 4. Guglielmo Marconi

Question ID : 264330145569
Status : Not Answered
Chosen Option : --

Q.2 Pandit Shivkumar Sharma is remembered for his mastery in playing _____.

- Ans**
- 1. Tabla
 - 2. Sarod
 - 3. Sitar
 - 4. Santoor

Question ID : 264330145784
Status : Answered
Chosen Option : 4

Q.3 Women SHG member appointed as a banking agent is called _____.

- Ans**
- 1. Bank Mitra
 - 2. Bank Dost
 - 3. Bank Sakhi
 - 4. Bank NGO

Question ID : 264330145706
Status : Answered
Chosen Option : 1

Q.4 Which potassium acid salt is obtained as a by-product of alcohol manufacture during the fermentation process?

- Ans
- 1. Potassium citrate
 - 2. Potassium bitartrate
 - 3. Potassium nitrate
 - 4. Potassium hydrogen adipate

Question ID : 264330149941
Status : Marked For Review
Chosen Option : 4

Q.5 Mundari dance is associated with the tribal community of which Indian state?

- Ans
- 1. Mizoram
 - 2. Karnataka
 - 3. Arunachal Pradesh
 - 4. Jharkhand

Question ID : 264330145767
Status : Not Answered
Chosen Option : --

Q.6 In 2014, Bandhan Financial Services, microlender with Headquarters at _____, was granted in-principal approval by RBI to start a universal bank.

- Ans
- 1. Kolkata
 - 2. Mumbai
 - 3. Pune
 - 4. Lucknow

Question ID : 264330145697
Status : Not Answered
Chosen Option : --

Q.7 What is the width of the court for double matches in Lawn Tennis?

- Ans
- 1. 38 feet
 - 2. 36 feet
 - 3. 34 feet
 - 4. 32 feet

Question ID : 264330146005
Status : Not Answered
Chosen Option : --

Q.8 Match the following statements:

List I	List II
a) Champakkulam boat race	i) Gujarat
b) Somnath fair	ii) Haryana
c) Surajkund fair	iii) Rajasthan
d) Baneshwar fair	iv) Kerala

- Ans
- 1. a-iv, b-iii, c-i, d-ii
 - 2. a-iii, b-i, c- iv, d-ii
 - 3. a-iv, b- ii, c- i, d-iii
 - 4. a-iv, b-i, c-ii, d-iii

Question ID : 264330148655
Status : Not Answered
Chosen Option : --

Q.9 Mid-latitude deserts (BWk) are found between 35° and _____ N and S, which are poleward of subtropical high-pressure areas.

- Ans
- 1. 70°
 - 2. 60°
 - 3. 79°
 - 4. 40°

Question ID : 264330145634
Status : Not Answered
Chosen Option : --

Q.10 Panchpatmali deposits in Koraput district are the deposits of which of the following minerals?

- Ans
- 1. Iron ore
 - 2. Copper
 - 3. Manganese
 - 4. Bauxite

Question ID : 264330150254
Status : Answered
Chosen Option : 2

Q.11 Which of the following Anglo-Maratha wars resulted in merging the Peshwas' territories with the Bombay Presidency?

- Ans
- 1. Fourth
 - 2. Third
 - 3. Second
 - 4. First

Question ID : 264330148579
Status : Answered
Chosen Option : 2

Q.12 Which of these is the correct reason for a good to be identified as a final good?

- Ans
- 1. It is not processed by a consumer after purchase.
 - 2. It cannot be recycled or re-used.
 - 3. It is in the last stage of the product life cycle.
 - 4. It is not processed further by a producer.

Question ID : 264330144699
Status : Not Answered
Chosen Option : --

Q.13 The lofty gates erected in the courtyard of the temples in south India were called _____.

- Ans
- 1. mandap
 - 2. ardhmandap
 - 3. vimana
 - 4. gopuram

Question ID : 264330148565
Status : Not Answered
Chosen Option : --

Q.14 Which of the following crops is the only genetically modified (GM) crop approved for commercial cultivation in India?

- Ans
- 1. Bt Brinjal
 - 2. Mustard
 - 3. Bt Cotton
 - 4. Tomato

Question ID : 264330145882
Status : Answered
Chosen Option : 3

Q.15 Which of the following players won the orange cap in IPL-2023?

- Ans
- 1. Yashasvi Jaiswal
 - 2. Shubman Gill
 - 3. Faf du Plessis
 - 4. Devon Conway

Question ID : 264330154908
Status : Answered
Chosen Option : 2

Q.16 The Constitution (Scheduled Castes and Scheduled Tribes) Orders (Second Amendment) Bill, 2022 has recognised the _____ community as a Schedule Tribe in some parts of Uttar Pradesh.

- Ans
- 1. Erukala
 - 2. Bhils
 - 3. Gonds
 - 4. Chenchus

Question ID : 264330145955
Status : Not Answered
Chosen Option : --

Q.17 When the general interest rate reaches a very low level, which of the following statements will be correct?

- Ans
- 1. Most people will expect the interest rate to rise in the future.
 - 2. Most people will prefer to hold bonds.
 - 3. Most people will speculate a further decline in the rate of interest.
 - 4. Any increase in the money supply will cause the interest rate to fall further.

Question ID : 264330145856
Status : Marked For Review
Chosen Option : 4

Q.18 Which of the following government schemes provides skill development training to youth in India?

- Ans
- 1. Pradhan Mantri Jan Dhan Yojana
 - 2. Pradhan Mantri Kaushal Vikas Yojana
 - 3. Deendayal Antyodaya Yojana
 - 4. Pradhan Mantri Garib Kalyan Anna Yojana

Question ID : 264330149380
Status : Answered
Chosen Option : 2

Q.19 Who is known as the founder of Widow Remarriage Association (1861)?

- Ans
- 1. Dr. Atma Ram Pandurang
 - 2. RG Bhandarkar
 - 3. Dwarkanath Tagore
 - 4. Mahadev Govind Ranade

Question ID : 264330150707
Status : Answered
Chosen Option : 1

Q.20 Which state in India has the highest number of aluminium smelting plants?

- Ans
- 1. Odisha
 - 2. Tamil Nadu
 - 3. Maharashtra
 - 4. Uttar Pradesh

Question ID : 264330149350
Status : Not Answered
Chosen Option : --

Q.21 As of February 2023, how many times Aditi Ashok has overall won the LET (Ladies European Tour) title?

- Ans
- 1. Four
 - 2. Five
 - 3. Three
 - 4. Six

Question ID : 264330150082
Status : Not Answered
Chosen Option : --

Q.22 Which of the following Articles of the Indian Constitution prohibits forced labour and prevents exploitation?

- Ans
- 1. Article 20
 - 2. Article 19
 - 3. Article 25
 - 4. Article 23

Question ID : 264330150360
Status : Answered
Chosen Option : 4

Q.23 In 1956, which of the following awards did Rukmini Devi Arundale, an eminent Bharatanatyam dancer, receive?

- Ans
- 1. Jnanpith Award
 - 2. Saraswati Samman
 - 3. Kabir Puraskar
 - 4. Padma Bhushan

Question ID : 264330150971
Status : Answered
Chosen Option : 4

Q.24 In which year did John Alexander Newlands propound a new concept of the 'Law of Octaves' proposing the periodicity of chemical elements arranged in order of atomic weight?

- Ans
- 1. 1860
 - 2. 1865
 - 3. 1873
 - 4. 1870

Question ID : 264330145594
Status : Not Answered
Chosen Option : --

Q.25 In India which of the following is a Gandhian principle of Directive Principles of State Policy?

- Ans
- 1. To Separate judiciary from executive
 - 2. To organise village panchayat
 - 3. To secure uniform civil code
 - 4. To provide equal pay for equal work

Question ID : 264330145936
Status : Marked For Review
Chosen Option : 3