



CHSL Tier - I Exam 1st Shift - 03-08-2023

- ★ Latest Govt Job updates
- ★ Private Job updates
- ★ Free Mock tests available

Visit - teachingninja.in

Combined Higher Secondary Level Examination 2023 Tier I

Roll Number	
Candidate Name	
Venue Name	
Exam Date	03/08/2023
Exam Time	11:45 AM - 12:45 PM
Subject	CHSL Exam 2023 Tier I

Section : English Language

Q.1 Choose the best substitute for the bracketed segment in the following sentence to complete the sentence meaningfully.

(No sooner did she shouted), than the thieves ran away leaving all the jewellery on the table.

- Ans
- 1. No sooner do she shouts
 - 2. No sooner does she shout
 - 3. No sooner had she shout
 - 4. No sooner did she shout

Question ID : 264330144355
Status : Answered
Chosen Option : 4

Q.2 Select the option that expresses the given sentence in active voice.
Mathematical problems are never solved daily by him.

- Ans
- 1. He never solves mathematical problems daily.
 - 2. He has solved never mathematical problems daily.
 - 3. He solve never mathematical problems daily.
 - 4. He solves never mathematical problems daily.

Question ID : 264330151289
Status : Answered
Chosen Option : 1

Q.3 Parts of the following sentence have been given as options. Select the option that contains an error.

My colleagues have lacked the conscience needed to be morally correct on this grave issue.

- Ans
- 1. conscience
 - 2. colleagues
 - 3. morally
 - 4. grave

Question ID : 264330144265
Status : Marked For Review
Chosen Option : 2

Q.4 The following sentence has been split into four segments. Identify the segment that contains a grammatical error.

When Mayank came, / I shall go / with him to / the circus.

Ans 1. with him to

2. When Mayank came

3. I shall go

4. the circus

Question ID : 264330149475
Status : Answered
Chosen Option : 2

Q.5 Select the most appropriate meaning of the given idiom.

Bite the bullet

Ans 1. To take a risk

2. To enjoy something immensely

3. To endure a painful situation

4. To criticise someone harshly

Question ID : 264330144162
Status : Answered
Chosen Option : 3

Q.6 Select the most appropriate ANTONYM of the given word.

Awkward

Ans 1. Graceful

2. Meaningful

3. Innocent

4. Huge

Question ID : 264330143177
Status : Answered
Chosen Option : 1

Q.7 Select the most appropriate ANTONYM of the underlined word in the given sentence.
On the day of independence, a jubilant crowd from all over the country cheered and wept.

Ans 1. Triumphant

2. Cryptic

3. Elated

4. Gloomy

Question ID : 264330143223
Status : Answered
Chosen Option : 4

Q.8 Select the most appropriate option that can substitute the underlined words in the following sentence.

It is raining a lot in April and May, but the summer is very dry.

- Ans
- 1. was raining a lot on
 - 2. will rains a lot of
 - 3. rains a lot in
 - 4. rain a lot at

Question ID : 264330142627
Status : Answered
Chosen Option : 3

Q.9 Select the option that can be used as a one-word substitute for the given group of words.

A person who conforms to accepted behaviour or established practices.

- Ans
- 1. Psychologist
 - 2. Conformist
 - 3. Socialist
 - 4. Rebelist

Question ID : 264330149844
Status : Answered
Chosen Option : 2

Q.10 Select the most appropriate ANTONYM of the underlined word in the following sentence.

The fields remained barren despite the efforts of the local administration and agricultural scientists.

- Ans
- 1. Sterile
 - 2. Unforgiving
 - 3. Damp
 - 4. Fertile

Question ID : 264330148916
Status : Answered
Chosen Option : 4

Q.11 Identify the correct spelling of the underlined word.

It is considered a great phenamina in the field of economics.

- Ans
- 1. phinomina
 - 2. fenomena
 - 3. phynamena
 - 4. phenomena

Question ID : 264330143197
Status : Answered
Chosen Option : 4

Q.12 Select the most appropriate ANTONYM of the given word.

Serendipity

- Ans 1. Tangibility
 2. Misfortune
 3. Permanency
 4. Tranquillity

Question ID : 264330148927
Status : Marked For Review
Chosen Option : 4

Q.13 Select the most appropriate ANTONYM of the given word.

Glad

- Ans 1. Jive
 2. Innocent
 3. Sad
 4. Haunt

Question ID : 264330143654
Status : Answered
Chosen Option : 3

Q.14 Sentences of a paragraph are given below in jumbled order. Arrange the sentences in the correct order to form a meaningful and coherent paragraph.

- A. It included a carbon tax on fossil fuels and incentives for businesses and individuals to adopt green practices.
B. The new policy aimed to reduce carbon emissions and promote renewable energy sources.
C. However, supporters of the policy argued that it was necessary to address the urgent threat of climate change and create a sustainable future for the planet.
D. The policy faced opposition from some industries and political groups who argued that it would hurt the economy.

- Ans 1. BADC
 2. BCAD
 3. DABC
 4. DACB

Question ID : 264330144203
Status : Answered
Chosen Option : 1

Q.15 Select the option that can be used as a one-word substitute for the underlined segment.

The music filled the room with a lot of happiness, expressing joyful melodies that brought smiles to everyone's faces.

- Ans 1. surprise
 2. joy
 3. excitement
 4. fear

Question ID : 264330149809
Status : Answered
Chosen Option : 2

Q.16 Select the option that expresses the following sentence in active voice.

A play is being staged by our group this evening.

- Ans
- 1. A play staged our group this evening.
 - 2. Our group stages a play this evening.
 - 3. Our group is staging a play this evening.
 - 4. Our group staged a play this evening.

Question ID : 264330142602
Status : Answered
Chosen Option : 3

Q.17 Select the most appropriate ANTONYM of the given word.

Grave

- Ans
- 1. Native
 - 2. Frivolous
 - 3. Foreign
 - 4. Serious

Question ID : 264330144379
Status : Marked For Review
Chosen Option : 2

Q.18 Select the option that can be used as a one-word substitute for the given group of words.

The constitutional right to vote

- Ans
- 1. Franchise
 - 2. Polling
 - 3. Voting
 - 4. Buttoning

Question ID : 264330144106
Status : Answered
Chosen Option : 3

Q.19 Select the most appropriate idiom for the given situation.

Aurangzeb, the famous Mughal ruler, found that he had caught someone more powerful than him in the form of the brave Maratha, Shivaji.

- Ans
- 1. Nipping in the bud
 - 2. Changing the hands
 - 3. Catching a tartar
 - 4. Blazing the trail

Question ID : 264330144119
Status : Answered
Chosen Option : 1

Q.20 Select the most appropriate option that can substitute the underlined segment in the given sentence.

I don't think he can dance as wellest Elena.

- Ans
- 1. weller than
 - 2. wellest
 - 3. as well as
 - 4. well than

Question ID : 264330144814
Status : Answered
Chosen Option : 1

Comprehension:

Read the given passage and answer the questions that follow.

Such examples of commercial success, of innovation, drive, vision, determination, adaptability, and adventure are anchored in the basic Indian openness to, and talent for, acquiring material wealth. For every success story there are, of course, dozens of failures. Traditional Indian firms have their strengths, but also their weaknesses, and of these perhaps the most debilitating are a lack of team work and a weakness for quick profit. These reflect ingrained ways of thinking and planning, as does the distrust of anyone outside the family, which inhibits the adoption of modern practices of management. But such weaknesses are more than compensated for by the desire to succeed, which is probably more intense in India, given the omnipresent fear of poverty, the cut-throat competition for each opportunity, and the asphyxiating hold of hierarchy.

SubQuestion No : 21

Q.21 What has the Indian talent for acquiring material wealth led to?

- Ans
- 1. Commercial success, stagnation, innovation
 - 2. Adaptability, quick profit, opportunity
 - 3. Commercial success, innovation, adaptability
 - 4. Determination, team work, adventure

Question ID : 264330149534
Status : Answered
Chosen Option : 2

Comprehension:

Read the given passage and answer the questions that follow.

Such examples of commercial success, of innovation, drive, vision, determination, adaptability, and adventure are anchored in the basic Indian openness to, and talent for, acquiring material wealth. For every success story there are, of course, dozens of failures. Traditional Indian firms have their strengths, but also their weaknesses, and of these perhaps the most debilitating are a lack of team work and a weakness for quick profit. These reflect ingrained ways of thinking and planning, as does the distrust of anyone outside the family, which inhibits the adoption of modern practices of management. But such weaknesses are more than compensated for by the desire to succeed, which is probably more intense in India, given the omnipresent fear of poverty, the cut-throat competition for each opportunity, and the asphyxiating hold of hierarchy.

SubQuestion No : 22

Q.22 What are the weaknesses of traditional Indian firms?

- Ans
- 1. Ingrained ways of thinking and adoption of modern practices of management
 - 2. A weakness for quick profit and the openness to acquiring wealth
 - 3. A lack of team work and the cut-throat competition
 - 4. A lack of team work and a weakness for quick profit

Question ID : 264330149535
Status : Answered
Chosen Option : 4

Comprehension:

Read the given passage and answer the questions that follow.

Such examples of commercial success, of innovation, drive, vision, determination, adaptability, and adventure are anchored in the basic Indian openness to, and talent for, acquiring material wealth. For every success story there are, of course, dozens of failures. Traditional Indian firms have their strengths, but also their weaknesses, and of these perhaps the most debilitating are a lack of team work and a weakness for quick profit. These reflect ingrained ways of thinking and planning, as does the distrust of anyone outside the family, which inhibits the adoption of modern practices of management. But such weaknesses are more than compensated for by the desire to succeed, which is probably more intense in India, given the omnipresent fear of poverty, the cut-throat competition for each opportunity, and the asphyxiating hold of hierarchy.

SubQuestion No : 23

Q.23 Why is the desire to succeed more intense in India?

- Ans
- 1. Due to the hold of hierarchy, fear of poverty, and a lack of team work
 - 2. Due to fear of poverty, a lack of team work and distrust of the outsider
 - 3. Due to cut-throat competition, distrust of the outsider and fear of poverty
 - 4. Due to fear of poverty, cut-throat competition, and the hold of hierarchy

Question ID : 264330149536

Status : Answered

Chosen Option : 4

Comprehension:

Read the given passage and answer the questions that follow.

Such examples of commercial success, of innovation, drive, vision, determination, adaptability, and adventure are anchored in the basic Indian openness to, and talent for, acquiring material wealth. For every success story there are, of course, dozens of failures. Traditional Indian firms have their strengths, but also their weaknesses, and of these perhaps the most debilitating are a lack of team work and a weakness for quick profit. These reflect ingrained ways of thinking and planning, as does the distrust of anyone outside the family, which inhibits the adoption of modern practices of management. But such weaknesses are more than compensated for by the desire to succeed, which is probably more intense in India, given the omnipresent fear of poverty, the cut-throat competition for each opportunity, and the asphyxiating hold of hierarchy.

SubQuestion No : 24

Q.24 Select the most appropriate ANTONYM of the given word with reference to its usage in the passage.

Debilitating

- Ans
- 1. Enfeebling
 - 2. Crippling
 - 3. Invigorating
 - 4. Undermining

Question ID : 264330149537

Status : Answered

Chosen Option : 3

Comprehension:

Read the given passage and answer the questions that follow.

Such examples of commercial success, of innovation, drive, vision, determination, adaptability, and adventure are anchored in the basic Indian openness to, and talent for, acquiring material wealth. For every success story there are, of course, dozens of failures. Traditional Indian firms have their strengths, but also their weaknesses, and of these perhaps the most debilitating are a lack of team work and a weakness for quick profit. These reflect ingrained ways of thinking and planning, as does the distrust of anyone outside the family, which inhibits the adoption of modern practices of management. But such weaknesses are more than compensated for by the desire to succeed, which is probably more intense in India, given the omnipresent fear of poverty, the cut-throat competition for each opportunity, and the asphyxiating hold of hierarchy.

SubQuestion No : 25

Q.25 Select the most appropriate synonym of the given word with reference to its usage in the passage.

Asphyxiating

- Ans
- 1. Emancipating
 - 2. Liberating
 - 3. Smothering
 - 4. Unfettering

Question ID : 264330149538
Status : Answered
Chosen Option : 4

Section : **General Intelligence**

Q.1 Which number can replace the question mark (?) in the following series?

1, 10, 28, 55, 91, 136, ?

- Ans
- 1. 190
 - 2. 191
 - 3. 192
 - 4. 195

Question ID : 264330146329
Status : Answered
Chosen Option : 1

Q.2 Select the set in which the numbers are related in the same way as are the numbers of the following sets.

(NOTE: Operations should be performed on whole numbers, without breaking down the numbers into their constituent digits. E.g. 13 – Operations on 13 such as adding/subtracting/multiplying, etc. to 13 can be performed. Breaking down 13 into 1 and 3 and then performing mathematical operations on 1 and 3 is not allowed.)

(162, 9, 18)

(231, 11, 21)

Ans ✓ 1. (336, 28, 12)

✗ 2. (270, 12, 23)

✗ 3. (314, 19, 16)

✗ 4. (296, 21, 14)

Question ID : 264330150850

Status : Answered

Chosen Option : 1

Q.3 Select the correct mirror image of the given figure when the mirror is placed at MN as shown below.

F H 7 8 3 b e
M
|
N

Ans ✓ 1. e d 3 8 7 H F

✗ 2. e b 3 8 7 H F

✗ 3. F H 8 3 b e

✗ 4. e d 3 8 7 H F

Question ID : 264330146666

Status : Answered

Chosen Option : 1

Q.4 125 is related to 50 in a certain way. Following the same logic, 230 is related to 92. To which of the following is 315 related, following the same logic?

Ans ✗ 1. 145

✗ 2. 135

✗ 3. 120

✓ 4. 126

Question ID : 264330150899

Status : Not Answered

Chosen Option : --

Q.5 What should come in place of X in the given series?

4 11 25 46 74 X

- Ans
- 1. 105
 - 2. 109
 - 3. 111
 - 4. 107

Question ID : 264330152159
Status : Answered
Chosen Option : 2

Q.6 In a certain code language,

A + B means 'A is the son of B',
A - B means 'A is the sister of B',
A × B means 'A is the mother of B',
A ÷ B means 'A is the brother of B'.

Based on the above, how is P related to S if 'P × Q ÷ R - T + S'?

- Ans
- 1. Father's mother
 - 2. Sister
 - 3. Wife
 - 4. Mother

Question ID : 264330147286
Status : Answered
Chosen Option : 3

Q.7 What will come in the place of '?' in the following equation, if '+' and '-' are interchanged with '×' and '÷', respectively?

$18 \times 17 + 4 + 22 - 2 = ?$

- Ans
- 1. 81
 - 2. 75
 - 3. 70
 - 4. 64

Question ID : 264330152183
Status : Answered
Chosen Option : 2

Q.8 Select the term from among the given options that can replace the question mark (?) in the following series based on the English alphabetical order.

ADE, CFH, EHK, GJN, ?

- Ans
- 1. IJK
 - 2. HKQ
 - 3. ILK
 - 4. ILQ

Question ID : 264330146862
Status : Answered
Chosen Option : 4

Q.9 In a certain code language, 'FLORENCE' is coded as '86' and 'GRATITUDE' is coded as '114'. How is 'FOREIGN' coded in the given language?

- Ans
- 1. 74
 - 2. 77
 - 3. 81
 - 4. 79

Question ID : 264330147317
Status : Answered
Chosen Option : 3

Q.10 What should come in place of ? in the given series based on the English alphabetical order?

MXU QCA UHG YMM ?

- Ans
- 1. BQT
 - 2. CRS
 - 3. BRT
 - 4. DUO

Question ID : 264330146613
Status : Answered
Chosen Option : 2

Q.11 What will come in the place of '?' in the following equation, if '+' and '-' are interchanged and '×' and '÷' are interchanged?

$$15 \div 5 + 12 \times 3 - 5 = ?$$

- Ans
- 1. 96
 - 2. 66
 - 3. 76
 - 4. 86

Question ID : 264330147379
Status : Answered
Chosen Option : 3

Q.12 In a certain code language,

$A + B$ means 'A is the wife of B',

$A - B$ means 'A is the brother of B',

$A \times B$ means 'A is the sister of B' and

$A \div B$ means 'A is the father of B'.

Based on the above, how is P related to N if ' $P - B \times V \div N + E$ '?

- Ans
- 1. Husband's son
 - 2. Mother's brother
 - 3. Father's brother
 - 4. Husband's brother

Question ID : 264330150991
Status : Answered
Chosen Option : 3

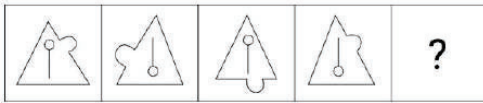
Q.13 Select the option that represents the combination of letters that, when sequentially placed from left to right in the blanks below, will complete the letter-series.
_cdd_dd_ddc_

- Ans
- 1. dccd
 - 2. cddc
 - 3. cdcd
 - 4. dc dc

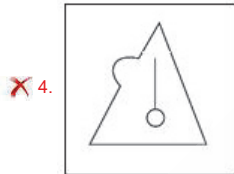
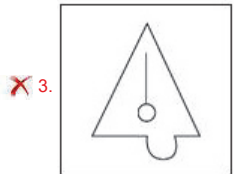
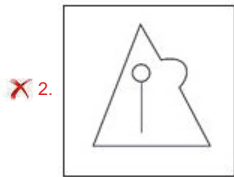
Question ID : 264330150683
Status : Answered
Chosen Option : 1



Q.14 Identify the figure given in the options which when put in place of the question mark (?) will logically complete the series.



Ans



Question ID : 264330147228
Status : Answered
Chosen Option : 1

Q.15 In a certain code language, 'all kings are beautiful' is coded as '42 63 mo lue' and 'all queens are beautiful' is coded as 'mo lue 63 36'. How is 'kings' coded in the given language?

- Ans**
- ✗ 1. 63
 - ✗ 2. 24
 - ✗ 3. lue
 - ✓ 4. 42

Question ID : 264330147446
Status : Answered
Chosen Option : 4

Q.16 Read the given statements and conclusions carefully. Assuming that the information given in the statements is true, even if it appears to be at variance with commonly known facts, decide which of the given conclusions logically follow(s) from the statements.

Statements:
Some keys are scales.
All books are papers.
All scales are papers.

Conclusions:
(I) No books are keys.
(II) Some papers are keys.

- Ans**
- 1. Both conclusions (I) and (II) follow
 - 2. Only conclusion (I) follows
 - 3. Only conclusion (II) follows
 - 4. Neither conclusion (I) nor (II) follows

Question ID : 264330146593
Status : Answered
Chosen Option : 3

Q.17 Which term from among the given options can replace the question mark (?) in the following series to make it logically complete?

BV 101, ?, DX 109, EY 113, FZ 117

- Ans**
- 1. CW 105
 - 2. CV 104
 - 3. CW 106
 - 4. CV 107

Question ID : 264330146970
Status : Answered
Chosen Option : 1

Q.18 Select the option in which the numbers do NOT share the same relationship as that shared by the given pairs of numbers.

(NOTE: Operations should be performed on the whole numbers, without breaking down the numbers into its constituent digits. E.g. 13 – Operations on 13 such as adding/deleting/multiplying etc. to 13 can be performed. Breaking down 13 into 1 and 3 and then performing mathematical operations on 1 and 3 is not allowed.)
4 : 75 and 2 : 19

- Ans**
- 1. 3 : 38
 - 2. 7 : 354
 - 3. 6 : 212
 - 4. 5 : 136

Question ID : 264330150903
Status : Answered
Chosen Option : 3

Q.19 Which of the following letter-clusters will replace the question mark (?) in the given series to make it logically complete?

MY 27, KZ 64, ?, GB 216, EC 343

- Ans
- 1. JB 81
 - 2. JA 81
 - 3. IA 125
 - 4. HB 100

Question ID : 264330147259
Status : Answered
Chosen Option : 3

Q.20 If 6 November 1925 is Friday, then what will be the day of the week on 16 December 1933?

- Ans
- 1. Monday
 - 2. Friday
 - 3. Thursday
 - 4. Saturday

Question ID : 264330146648
Status : Not Answered
Chosen Option : --

Q.21 UOKG is related to VPLH in a certain way based on the English alphabetical order. In the same way, KQWY is related to LRXZ. To which of the following is AMSW related to following the same logic?

- Ans
- 1. BNTX
 - 2. WKTC
 - 3. BOTY
 - 4. ZMRW

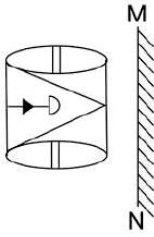
Question ID : 264330147108
Status : Answered
Chosen Option : 1

Q.22 Four number pairs have been given, out of which three are alike in some manner and one is different. Select the one that is different.

- Ans
- 1. 15 – 225
 - 2. 19 – 361
 - 3. 9 – 81
 - 4. 4 – 64

Question ID : 264330152121
Status : Answered
Chosen Option : 4

Q.23 Select the correct mirror image of the given figure when the mirror is placed at MN as shown.



Ans

- 1.
- 2.
- 3.
- 4.



Question ID : 264330146507
Status : Answered
Chosen Option : 4

Q.24 Read the given statements and conclusions carefully. Assuming that the information given in the statements is true, even if it appears to be at variance with commonly known facts, decide which of the given conclusions logically follow(s) from the statements.

Statements:

Some pencils are cartoons.
All cartoons are rivers.
All rivers are shadows.

Conclusions:

(I) All pencils are shadows.
(II) All cartoons are shadows.
(III) Some shadows are pencils.

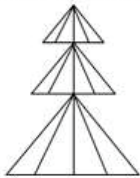
- Ans
- 1. Both conclusions II and III follow
 - 2. Both conclusions I and II follow
 - 3. Only conclusion III follows
 - 4. Only conclusion II follows

Question ID : 264330147464

Status : Answered

Chosen Option : 1

Q.25 Identify the number of triangles in the given figure.



- Ans
- 1. 22
 - 2. 30
 - 3. 26
 - 4. 28

Question ID : 264330151079

Status : Answered

Chosen Option : 2

Section : Quantitative Aptitude

Q.1 The divisor is 10 times the quotient and 5 times the remainder in a division sum. What is the dividend if the remainder is 46?

- Ans
- 1. 5972
 - 2. 4286
 - 3. 4874
 - 4. 5336

Question ID : 264330147849

Status : Answered

Chosen Option : 3

Q.2 A sum amounts to ₹6,120 in 2 years and ₹7,340 in 3 years at compound interest. The sum (in ₹) is (rounded off to 2 decimal places):

- Ans
- 1. 4,050.13
 - 2. 4,254.63
 - 3. 4,850.32
 - 4. 4,560.23

Question ID : 264330148044
Status : Not Answered
Chosen Option : --

Q.3 The value of $(\operatorname{cosec}^2 B - 1)(\sec^2 B - 1)$ is:

- Ans
- 1. 4
 - 2. 3
 - 3. 2
 - 4. 1

Question ID : 264330147805
Status : Answered
Chosen Option : 4

Q.4 If $\sin \theta + \cos \theta = \frac{1}{29}$, find the value of $\frac{\sin \theta + \cos \theta}{\sin \theta - \cos \theta}$.

- Ans
- 1. $\frac{1}{41}$
 - 2. $\frac{43}{29}$
 - 3. $\frac{41}{29}$
 - 4. $\frac{1}{43}$

Question ID : 264330148215
Status : Answered
Chosen Option : 1

Q.5 In a circle with radius 20 cm, X is a point located at a distance of 29 cm from the centre of the circle. What will be the length (in cm) of a tangent drawn from point X to the circle?

- Ans
- 1. 23
 - 2. 20
 - 3. 21
 - 4. 18

Question ID : 264330146820
Status : Answered
Chosen Option : 3

Q.6 A profit earned by selling an article for ₹1,032 is equal to the loss incurred when the same article is sold for ₹648. What should be the selling price of the article if the profit is 30%?

- Ans
- 1. ₹2,520
 - 2. ₹1,050
 - 3. ₹1,092
 - 4. ₹998

Question ID : 264330149417
Status : Answered
Chosen Option : 3

Q.7 Find the volume of the largest possible sphere circumscribed by a cube of edge 7 cm.

- Ans
- 1. 179.67 cm^3
 - 2. 169.67 cm^3
 - 3. 189.67 cm^3
 - 4. 199.67 cm^3

Question ID : 264330148252
Status : Not Answered
Chosen Option : --

Q.8 Two parallel lines touch the circles at P and Q. Area of the circle is 154 cm^2 . Find the length of PQ. (Take $\pi = \frac{22}{7}$).

- Ans
- 1. 58.2 cm
 - 2. 14 cm
 - 3. 7 cm
 - 4. 77 cm

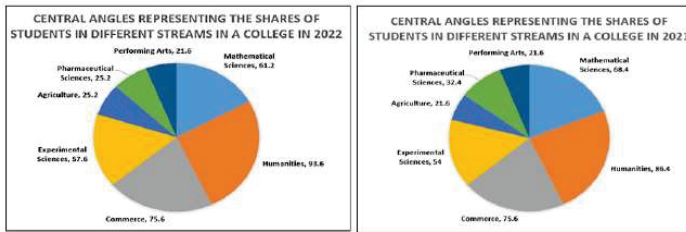
Question ID : 264330147645
Status : Answered
Chosen Option : 3

Q.9 Which option with given sides forms a Triangle?

- Ans
- 1. 8, 6, 9
 - 2. 100, 200, 300
 - 3. 10, 25, 11
 - 4. 8, 2, 6

Question ID : 264330148899
Status : Answered
Chosen Option : 3

Q.10 The shares of students studying in different streams of a college in the years 2021 and 2022 are as reflected in the two pie charts given below.



The total number of students opting for humanities in the college was 15600 in both the given years. What was the percentage change in the total number of students in the college from 2021 to 2022? [Give your answer correct to the nearest integer value]

- Ans
- 1. 6%
 - 2. 8%
 - 3. 9%
 - 4. 7%

Question ID : 264330146809
 Status : Not Answered
 Chosen Option : --

Q.11 In a triangle DEF, DP is the bisector of $\angle D$, meeting EF at P. If DE = 14 cm, DF = 21 cm, and EF = 9 cm, find EP.

- Ans
- 1. 3.6 cm
 - 2. 5.4 cm
 - 3. 6.3 cm
 - 4. 2.7 cm

Question ID : 264330147681
 Status : Answered
 Chosen Option : 1

Q.12 Mohan completed a certain journey by car. If he covered 30% of the distance at 90 km/h, 45% of the distance at 135 km/h and the remaining distance at 75 km/h. His average speed (in km/h) for the entire journey is:

- Ans
- 1. 100
 - 2. 90
 - 3. 105
 - 4. 95

Question ID : 264330149444
 Status : Not Answered
 Chosen Option : --

Q.13 The price of a certain mobile set is discounted by 10% and the reduced price is then discounted by 10%. This series of successive discounts is equivalent to a single discount of:

- Ans
- 1. 17%
 - 2. 16%
 - 3. 19%
 - 4. 18%

Question ID : 264330148194
Status : Answered
Chosen Option : 3

Q.14 Rajinder drives his car at an average speed of 40 km per hour to cover half of his total distance and thereafter he increases his speed to 60 km per hour. He covers his journey in 7 hours. What is the average speed of Rajinder in this journey?

- Ans
- 1. 52 km per hour
 - 2. 48 km per hour
 - 3. 50 km per hour
 - 4. 54 km per hour

Question ID : 264330147700
Status : Answered
Chosen Option : 2

Q.15 Babita is 1.25 times as efficient as Deepak. Working together the duo can complete a piece of work in 40 days. In how many days can Deepak alone complete the same piece of work?

- Ans
- 1. 84
 - 2. 90
 - 3. 96
 - 4. 100

Question ID : 264330146796
Status : Answered
Chosen Option : 2

Q.16 Find the fourth proportion to 0.24, 0.6 and 20.

- Ans
- 1. 50
 - 2. 24
 - 3. 54
 - 4. 48

Question ID : 264330148242
Status : Answered
Chosen Option : 1

Q.17 Simplify the given expression. $\frac{4913+343}{289+49-119}$

- Ans
- 1. 24
 - 2. 26
 - 3. 22
 - 4. 20

Question ID : 264330147953
Status : Answered
Chosen Option : 1

Q.18 A contractor employed 69 workers to complete a work in 20 days. How many more workers he should employ to complete the work in 12 days?

- Ans
- 1. 115 workers
 - 2. 46 workers
 - 3. 51 workers
 - 4. 64 workers

Question ID : 264330150659
Status : Answered
Chosen Option : 2

Q.19 If $p + q + r = 0$, then what is the simplified value of the expression

$$\left(\frac{p^2}{p^2 - qr} + \frac{q^2}{q^2 - pr} + \frac{r^2}{r^2 - pq} \right) ?$$

- Ans
- 1. 0
 - 2. 2
 - 3. 1
 - 4. -1

Question ID : 264330150570
Status : Answered
Chosen Option : 2

Q.20 If $\left(z + \frac{1}{z}\right) = 4$, then what will be the value of $\frac{1}{2}\left(z^2 + \frac{1}{z^2}\right)$?

- Ans
- 1. 14
 - 2. 16
 - 3. 7
 - 4. 8

Question ID : 264330150563
Status : Answered
Chosen Option : 3

Q.21 The following table gives the percentage of marks obtained by seven students in six different subjects in an examination.

The number in the brackets gives the maximum marks in each subject.

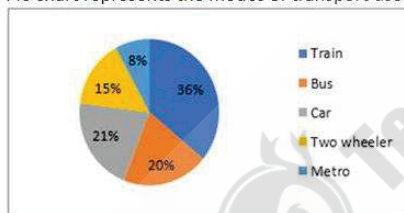
Students	Subject (Max. Marks)					
	Maths (150)	Chemistry (130)	Physics (120)	Geography (100)	History (60)	Computer Science (40)
Ayush	90	50	90	60	70	80
Aman	100	80	80	40	80	70
Sajal	90	60	70	70	90	70
Rohit	80	65	80	80	60	60
Muskan	80	65	85	95	50	90
Tanvi	70	75	65	85	40	60
Tarun	65	35	50	77	80	80

How many students secured more than 70% marks in Geography?

- Ans
- 1. 3
 - 2. 4
 - 3. 6
 - 4. 5

Question ID : 264330146799
Status : Answered
Chosen Option : 2

Q.22 Pie chart represents the modes of transport used by different employees in a university.



The central angle of the sector for officers using two wheeler is:

- Ans
- 1. 72°
 - 2. 46°
 - 3. 36°
 - 4. 54°

Question ID : 264330148433
Status : Answered
Chosen Option : 4

Q.23 If $\cot B = \frac{15}{8}$, where B is an acute angle, what is the value of $\sec B + \tan B$?

- Ans
- 1. $\frac{4}{5}$
 - 2. $\frac{5}{3}$
 - 3. $\frac{5}{4}$
 - 4. $\frac{3}{5}$

Question ID : 264330149993
Status : Answered
Chosen Option : 2

Q.24 A trader allows a 40% discount on his goods, but he loses 30% on them. Find the percentage of the marked price above the cost price.

- Ans
- 1. $15\frac{2}{3}\%$
 - 2. $15\frac{1}{3}\%$
 - 3. $16\frac{2}{3}\%$
 - 4. $16\frac{1}{3}\%$

Question ID : 264330147746
Status : Answered
Chosen Option : 3

Q.25 Sudesh is the owner of a multipurpose shop. For a specific month, his profits are detailed below.

Category	Profit earned in ₹
Groceries	50,000
Cosmetics	20,000
Ladies' dresses	10,000

In order to estimate the expected profit for the next month, he assigns the weights of 6, 5 and 8 to the different categories in the same order.

What will be the weighted average of his profits?

- Ans
- 1. ₹25,265.18 (nearly)
 - 2. ₹24,863.16 (nearly)
 - 3. ₹25,163.16 (nearly)
 - 4. ₹25,263.16 (nearly)

Question ID : 264330147698
Status : Not Answered
Chosen Option : --

Section : General Awareness

Q.1 Who founded the Chola empire?

- Ans
- 1. Dantidurga
 - 2. Singhavishnu
 - 3. Upendrarai
 - 4. Vijayalaya

Question ID : 264330150208
Status : Answered
Chosen Option : 4

Q.2 Arvind Parikh is associated with which of the following musical instruments?

- Ans
- 1. Shehnai
 - 2. Mridangam
 - 3. Tabla
 - 4. Sitar

Question ID : 264330148685
Status : Not Answered
Chosen Option : --

Q.3 India's first and the world's second 100% methanol-powered prototype truck was unveiled in _____.

- Ans
- 1. Bengaluru
 - 2. Delhi
 - 3. Hyderabad
 - 4. Chennai

Question ID : 264330145944
Status : Answered
Chosen Option : 3

Q.4 Onam is a state festival of _____.

- Ans
- 1. Gujarat
 - 2. Karnataka
 - 3. Goa
 - 4. Kerala

Question ID : 264330151249
Status : Answered
Chosen Option : 4

Q.5 Which of the following is NOT an objective of National Rehabilitation and Resettlement Policy (2007) of the Government of India?

Ans 1.

To maximise the focus on rehabilitation without really caring for resettlement

2.

To integrate rehabilitation concerns into the development planning and implementation process

3.

To minimise displacement and to promote, as far as possible, non-displacing or least-displacing alternatives

4.

To provide a better standard of living, making concerted efforts for providing sustainable income to the affected families

Question ID : 264330150370

Status : **Not Answered**

Chosen Option : --

Q.6 What is the purpose of the Earth's magnetic field?

Ans 1. To provide an energy source for life on Earth

2. To control the Earth's climate

3. To shield the Earth from solar wind and cosmic radiation

4. To cause the tides in the ocean

Question ID : 264330150145

Status : **Not Answered**

Chosen Option : --

Q.7 Which mineral salt is dissolved in major amount in ocean water?

Ans 1. Calcium chloride

2. Calcium carbonate

3. Sodium chloride

4. Calcium sulphate

Question ID : 264330145682

Status : **Answered**

Chosen Option : 3

Q.8 X and Y are working as managers in a restaurant but they receive unequal pay for the same work. Which Article of the Directive Principles of State Policy provides for equal pay for equal work?

Ans 1. Article 38

2. Article 41

3. Article 39

4. Article 40

Question ID : 264330150365

Status : **Answered**

Chosen Option : 2

Q.9 Which of the following is NOT a characteristic of National Highways in India?

- Ans
- 1. Meant for inter-state transport
 - 2. Connect state capitals and major cities
 - 3. Construction of border roads in high altitude areas
 - 4. Maintained by the Central Government

Question ID : 264330149353
Status : Answered
Chosen Option : 3

Q.10 The Government Budget is a statement of estimates of the government receipts and government expenditure for the coming financial year. The financial year for India is the period from _____ to _____.

- Ans
- 1. January 1 to December 31
 - 2. February 1 to January 31
 - 3. October 1 to August 31
 - 4. April 1 to March 31

Question ID : 264330145691
Status : Answered
Chosen Option : 4

Q.11 Which part of a cell converts nutrients into energy?

- Ans
- 1. Cell membrane
 - 2. Lysosomes
 - 3. Mitochondria
 - 4. Chromosome

Question ID : 264330145835
Status : Answered
Chosen Option : 2

Q.12 At the Sportster East Sports Conclave 2023, which Indian women's cricket player received the Emerging Hero award?

- Ans
- 1. Richa Ghosh
 - 2. Harleen Deol
 - 3. Deepti Sharma
 - 4. Titas Sadhu

Question ID : 264330150080
Status : Not Answered
Chosen Option : --

Q.13 Which of the following schemes aims to provide an integrated property validation solution for rural India?

- Ans
- 1. WDF
 - 2. SVAMITVA
 - 3. NRLM
 - 4. PIDF

Question ID : 264330146111
Status : Answered
Chosen Option : 2

Q.14 What is the monomer unit of glycogen?

- Ans
- 1. Fructose
 - 2. Glucose
 - 3. Galactose
 - 4. Mannose

Question ID : 264330144480
Status : Not Answered
Chosen Option : --

Q.15 Which of these statements is INCORRECT about Human Development Index?

- Ans
- 1. The level of education is represented in the HDI.
 - 2. It uses the per capita GDP of a country on purchasing power parity terms to represent the income component.
 - 3. Birth rate and death rate are important components of the HDI.
 - 4. Life expectancy at birth is one of the components of the HDI.

Question ID : 264330144666
Status : Answered
Chosen Option : 3

Q.16 Which of the following noble ideals is mentioned in the Preamble of the Indian Constitution?

- Ans
- 1. Liberty of expression, civil, political, worship and belief
 - 2. Liberty of thought, expression, belief, faith and worship
 - 3. Liberty of belief, fiscal, personal, faith and worship
 - 4. Liberty of opportunity, economic, social, faith and expression

Question ID : 264330150352
Status : Answered
Chosen Option : 2

Q.17 In which language was the work of Raja Ram Mohan Roy, 'Gift to Monotheists' originally written?

- Ans
- 1. Arabic
 - 2. Persian
 - 3. Bengali
 - 4. Sanskrit

Question ID : 264330150234
Status : Answered
Chosen Option : 3

Q.18 According to Census of India 2011, what is the decadal population growth rate?

- Ans
- 1. 16.2%
 - 2. 17.2%
 - 3. 16.7%
 - 4. 17.7%

Question ID : 264330150277
Status : Answered
Chosen Option : 4

Q.19 With which of the following awards was Kuchipudi dancer V Satyanarayana Sarma honoured?

- Ans
- 1. Kalidas Samman
 - 2. Kabir Puraskar
 - 3. Padma Shri
 - 4. Moortidevi Award

Question ID : 264330151262
Status : Answered
Chosen Option : 3

Q.20 Which of the following is the best estimate of the total borrowings by the government?

- Ans
- 1. Primary Deficit
 - 2. Revenue Receipts
 - 3. Money Supply
 - 4. Fiscal Deficit

Question ID : 264330145685
Status : Answered
Chosen Option : 2

Q.21 In which year was the Twenty Point Programme (TPP) launched?

- Ans
- 1. 2006
 - 2. 1975
 - 3. 1986
 - 4. 1982

Question ID : 264330146131
Status : Not Answered
Chosen Option : --

Q.22 The number of gold medals won by India at the Tokyo Olympics 2020 is _____.

- Ans
- 1. two
 - 2. three
 - 3. four
 - 4. one

Question ID : 264330145982
Status : Answered
Chosen Option : 4

Q.23 Dhimsa folk dance is performed by the tribes of:

- Ans
- 1. Solan Valley
 - 2. Araku Valley
 - 3. Ketti Valley
 - 4. Parvati Valley

Question ID : 264330148641
Status : Answered
Chosen Option : 1

Q.24 In September 2022, Neeraj Chopra becomes the first Indian to win the Diamond League by winning the Diamond League Final 2022 title at Zurich with a throw of _____.

- Ans
- 1. 90.08 m
 - 2. 88.44 m
 - 3. 97.02 m
 - 4. 89.08 m

Question ID : 264330150071
Status : Answered
Chosen Option : 2

Q.25 Which of the following states receives rainfall during the retreating monsoon?

- Ans
- 1. Madhya Pradesh
 - 2. Gujarat
 - 3. Bihar
 - 4. Tamil Nadu

Question ID : 264330150247
Status : Not Answered
Chosen Option : --



Teachingninja.in