



SSC CHSL TIRE – I – Shift - 1 - 07-08-2023

-  **Latest Govt Job updates**
-  **Private Job updates**
-  **Free Mock tests available**

Visit - teachingninja.in

Combined Higher Secondary Level Examination 2023 Tier I

Roll Number	
Candidate Name	
Venue Name	
Exam Date	07/08/2023
Exam Time	9:00 AM - 10:00 AM
Subject	CHSL Exam 2023 Tier I

Section : English Language

Q.1 Select the most appropriate meaning of the given idiom.
Cutting corners

- Ans 1. To take the long way around
2. To do something quickly or cheaply, often at the expense of quality or safety
3. To follow the rules strictly
4. To be honest and fair

Question ID : 264330143945
Status : Answered
Chosen Option : 2

Q.2 Parts of the following sentence have been given as options. Select the option that contains an error.

He was that angry that he slammed the book on the table.

- Ans 1. that he slammed the book
2. that angry
3. He was
4. on the table

Question ID : 264330144365
Status : Answered
Chosen Option : 2

Q.3 Select the most appropriate idiom for the given situation.

Shayam was accused of bribery, but he submitted proofs for his innocence.

- Ans 1. Buying the pig in a poke
2. Cast pearls before they swine
3. Chapter and verse
4. Beating about the bush

Question ID : 264330144121
Status : Marked For Review
Chosen Option : 4

Q.4 Select the most appropriate synonym of the given word.
Requirement

- Ans** 1. Essential
 2. Serious
 3. Vague
 4. Importance

Question ID : 264330141286
Status : **Marked For Review**
Chosen Option : 1

Q.5 Select the **INCORRECTLY** spelt word.

- Ans** 1. Mischievous
 2. Monologue
 3. Maintenance
 4. Millionaire

Question ID : 264330143237
Status : **Marked For Review**
Chosen Option : 2

Q.6 Select the most appropriate synonym of the given word.
Callous

- Ans** 1. Inordinate
 2. Compassionate
 3. Insensitive
 4. Unshackle

Question ID : 264330143144
Status : **Marked For Review**
Chosen Option : 1

Q.7 Select the most appropriate option that can substitute the underlined segment in the given sentence.
Sujata has not and can never in the good books of her principal as she lacks honesty.

- Ans** 1. has not been and can never be
 2. has not been and can never been
 3. has not be and can never be
 4. has not be and can never been

Question ID : 264330144098
Status : **Not Answered**
Chosen Option : --

Q.8 Select the option with the correct spelling that can replace the underlined word in the given sentence.

The old building was damolished to make way for a new building.

Ans 1. demolished

2. demoleished

3. demonished

4. demolaished

Question ID : 264330143125

Status : Answered

Chosen Option : 2

Q.9 Select the option that can be used as a one-word substitute for the given group of words.

A lover of mankind

Ans 1. Misanthrope

2. Philanthropist

3. Narcissist

4. Lexicographer

Question ID : 264330143206

Status : Marked For Review

Chosen Option : 1

Q.10 Select the most appropriate option that can substitute the underlined words in the given sentence.

The integration of cutting-edge technologies into the healthcare industry have the prospect of revolutionising the way medical professionals provide patient care.

Ans 1. were the potential

2. have the potential

3. has the prospect

4. will have potential

Question ID : 264330147542

Status : Marked For Review

Chosen Option : 1

Q.11 Select the option that expresses the given sentence in active voice.

The tiger was killed on an unfortunate day by a hostile hunter.

Ans 1. A hostile hunter had killed the tiger on an unfortunate day.

2. A hostile hunter kills the tiger on an unfortunate day.

3. The tiger is killed by a hostile hunter on an unfortunate day.

4. A hostile hunter killed the tiger on an unfortunate day.

Question ID : 264330143040

Status : Marked For Review

Chosen Option : 2

Q.12 Select the option that correctly expresses the following sentence in passive voice.

Are you delivering the pizza?

- Ans
- 1. Has the pizza delivered by you?
 - 2. Were the pizza being delivered by you?
 - 3. Will you deliver the pizza?
 - 4. Is the pizza being delivered by you?

Question ID : 264330144331
Status : Marked For Review
Chosen Option : 1

Q.13 Select the most appropriate ANTONYM of the underlined word.
Our economies and societies as a whole need to become resilient to climate impacts.

- Ans
- 1. intricate
 - 2. lint
 - 3. lapse
 - 4. weak

Question ID : 264330143656
Status : Marked For Review
Chosen Option : 1

Q.14 Parts of a sentence are given below in jumbled order. Select the option that arranges the parts in the correct order to form a meaningful sentence.

- A. Between renunciation of the social world
- B. The first point to note
- C. And asceticism
- D. Is the intimate link

- Ans
- 1. A, C, B, D
 - 2. B, D, A, C
 - 3. A, B, C, D
 - 4. B, C, D, A

Question ID : 264330142615
Status : Marked For Review
Chosen Option : 2

Q.15 Select the most appropriate synonym of the given word.

Deterioration

- Ans
- 1. Retrogression
 - 2. Demonstration
 - 3. Malfunction
 - 4. Ramification

Question ID : 264330143974
Status : Not Answered
Chosen Option : --

Q.16 Parts of a sentence are given below in jumbled order. Select the option that arranges the parts in the correct order to form a meaningful sentence.

- A. The fact that all members of the family were exposed
- B. The waste of human resources and
- C. To each other's capricious minds had a debasing effect
- D. On the vitality of society as a whole

- Ans
- 1. A, C, D, B
 - 2. B, A, D, C
 - 3. D, A, C, B
 - 4. B, A, C, D

Question ID : 264330142617
Status : Answered
Chosen Option : 4

Q.17 The following sentence has been split into four segments. Identify the segment that contains a grammatical error.

Laisha should holding / a meeting in the / Prem Auditorium / tomorrow evening.

- Ans
- 1. Laisha should holding
 - 2. Prem Auditorium
 - 3. a meeting in the
 - 4. tomorrow evening

Question ID : 264330149476
Status : Not Attempted and Marked For Review
Chosen Option : --

Q.18 Choose the correct meaning of the underlined word in the given sentence.

The government is planning a new policy to help the immigrants coming from the neighbouring country.

- Ans
- 1. Someone who leaves one country to settle in another
 - 2. Someone who goes to visit a new country for a short time
 - 3. Someone who travels for work
 - 4. Someone who travels to space

Question ID : 264330149741
Status : Marked For Review
Chosen Option : 2

Q.19 Select the most appropriate ANTONYM of the underlined word in the given sentence.

On the flight, I was in the company of an extremely chivalrous man.

- Ans
- 1. Noble
 - 2. Degraded
 - 3. Virtuous
 - 4. Courteous

Question ID : 264330143230
Status : Not Attempted and Marked For Review
Chosen Option : --

Q.20 Select the most appropriate synonym of the given word.

Objection

- Ans 1. Moan
 2. Disapproval
 3. Counter
 4. Sanction

Question ID : 264330144884
Status : **Marked For Review**
Chosen Option : 2

Comprehension:

In the following passage some words have been deleted. Fill in the blanks with the help of the alternatives given. Select the most appropriate option for each number.

Today, I want to talk to you about a very simple matter, that is, simple conversations. When we learn to speak, (1)_____ come words, then phrases, and then scripts. You would agree that the larger the bundles of words we (2)_____, the less we have to worry about combining them into sensible (3)_____. Also the less we have to fret over syntax or (4)_____. Do you think you choose the words? Do you pre-rehearse every time you go out? (5)_____ what happens when you walk into a fast-food restaurant. My dear, how do you react in those real life situations?

SubQuestion No : 21

Q.21 Select the most appropriate option to fill in blank no. 1.

- Ans 1. finally
 2. hence
 3. then
 4. first

Question ID : 264330151104
Status : **Answered**
Chosen Option : 4

Comprehension:

In the following passage some words have been deleted. Fill in the blanks with the help of the alternatives given. Select the most appropriate option for each number.

Today, I want to talk to you about a very simple matter, that is, simple conversations. When we learn to speak, (1)_____ come words, then phrases, and then scripts. You would agree that the larger the bundles of words we (2)_____, the less we have to worry about combining them into sensible (3)_____. Also the less we have to fret over syntax or (4)_____. Do you think you choose the words? Do you pre-rehearse every time you go out? (5)_____ what happens when you walk into a fast-food restaurant. My dear, how do you react in those real life situations?

SubQuestion No : 22

Q.22 Select the most appropriate option to fill in blank no. 2.

- Ans 1. ask around
 2. bail out
 3. look after
 4. carry around

Question ID : 264330151105
Status : **Not Answered**
Chosen Option : --

Comprehension:

In the following passage some words have been deleted. Fill in the blanks with the help of the alternatives given. Select the most appropriate option for each number.

Today, I want to talk to you about a very simple matter, that is, simple conversations. When we learn to speak, (1)_____ come words, then phrases, and then scripts. You would agree that the larger the bundles of words we (2)_____, the less we have to worry about combining them into sensible (3)_____. Also the less we have to fret over syntax or (4)_____. Do you think you choose the words? Do you pre-rehearse every time you go out? (5)_____ what happens when you walk into a fast-food restaurant. My dear, how do you react in those real life situations?

SubQuestion No : 23

Q.23 Select the most appropriate option to fill in blank no. 3.

Ans 1. executions

2. traits

3. expressions

4. criticism

Question ID : 264330151106

Status : Answered

Chosen Option : 1

Comprehension:

In the following passage some words have been deleted. Fill in the blanks with the help of the alternatives given. Select the most appropriate option for each number.

Today, I want to talk to you about a very simple matter, that is, simple conversations. When we learn to speak, (1)_____ come words, then phrases, and then scripts. You would agree that the larger the bundles of words we (2)_____, the less we have to worry about combining them into sensible (3)_____. Also the less we have to fret over syntax or (4)_____. Do you think you choose the words? Do you pre-rehearse every time you go out? (5)_____ what happens when you walk into a fast-food restaurant. My dear, how do you react in those real life situations?

SubQuestion No : 24

Q.24 Select the most appropriate option to fill in blank no. 4.

Ans 1. dictates

2. hyperbole

3. exaggeration

4. grammar

Question ID : 264330151107

Status : Answered

Chosen Option : 4

Comprehension:

In the following passage some words have been deleted. Fill in the blanks with the help of the alternatives given. Select the most appropriate option for each number.

Today, I want to talk to you about a very simple matter, that is, simple conversations. When we learn to speak, (1)_____ come words, then phrases, and then scripts. You would agree that the larger the bundles of words we (2)_____, the less we have to worry about combining them into sensible (3)_____. Also the less we have to fret over syntax or (4)_____. Do you think you choose the words? Do you pre-rehearse every time you go out? (5)_____ what happens when you walk into a fast-food restaurant. My dear, how do you react in those real life situations?

SubQuestion No : 25

Q.25 Select the most appropriate option to fill in blank no. 5.

- Ans
- 1. Supplicate
 - 2. Dramatise
 - 3. Formerly display
 - 4. Consider

Question ID : 264330151108
Status : Answered
Chosen Option : 3

Section : General Intelligence

Q.1 Based on the alphabetical order, three of the following four are alike in a certain way and thus form a group. Which is the one that does NOT belong to that group?

- Ans
- 1. HJN
 - 2. LOQ
 - 3. PSU
 - 4. MPR

Question ID : 264330146733
Status : Answered
Chosen Option : 1

Q.2 AKM is related to DNP in a certain way based on the English alphabetical order. In the same way, BTS is related to EWV. To which of the following is LGK related following the same logic?

- Ans
- 1. OJN
 - 2. MHC
 - 3. KGL
 - 4. ADH

Question ID : 264330152071
Status : Answered
Chosen Option : 1

Q.3 In a certain code language,

A + B means 'A is the son of B',
A - B means 'A is the wife of B',
A × B means 'A is the brother of B',
A ÷ B means 'A is the mother of B'.

Based on the above, if 'P - Q × R + S ÷ T', which of the following is true?

- Ans
- 1. Q is the son of S.
 - 2. S is the mother of P.
 - 3. P is the daughter of T.
 - 4. T is the son of S.

Question ID : 264330147280

Status : **Not Attempted and
Marked For Review**

Chosen Option : --

Q.4 Select the triad in which the numbers are related in the same way as are the numbers of the following triads.

5 - 70 - 9

8 - 95 - 11

(NOTE: Operations should be performed on the whole numbers, without breaking down the numbers into its constituent digits. E.g. 13 - Operations on 13 such as adding / subtracting / multiplying etc. to 13 can be performed. Breaking down 13 into 1 and 3 and then performing mathematical operations on 1 and 3 is not allowed)

- Ans
- 1. 12 - 144 - 15
 - 2. 17 - 135 - 21
 - 3. 6 - 135 - 21
 - 4. 4 - 28 - 79

Question ID : 264330147368

Status : **Not Attempted and
Marked For Review**

Chosen Option : --

Q.5 Each of the letters in the word NERVOUS are arranged in alphabetical order. How many letters are there in the English alphabetical series between the letter that is fourth from the left and the one that is second from the right in the new letter-cluster thus formed?

- Ans
- 1. Two
 - 2. Six
 - 3. Four
 - 4. Three

Question ID : 264330146882

Status : **Answered**

Chosen Option : 1

Q.6 In the following number-pairs, the second number is obtained by applying certain mathematical operations to the first number. Select the option in which the numbers are related in the same way as are the numbers of the following pairs.

(NOTE: Operations should be performed on the whole numbers, without breaking down the numbers into its constituent digits. E.g. 13 - Operations on 13 such as adding/deleting/multiplying etc. to 13 can be performed. Breaking down 13 into 1 and 3 and then performing mathematical operations on 1 and 3 is not allowed.)

9, 77

16, 252

- Ans
- 1. 12, 132
 - 2. 11, 117
 - 3. 15, 125
 - 4. 7, 54

Question ID : 264330146395

Status : Answered

Chosen Option : 2

Q.7 What should come in place of the question mark (?) in the given series?

11, 12, 26, 81, 328, 1645, ?

- Ans
- 1. 5320
 - 2. 9876
 - 3. 2243
 - 4. 1824

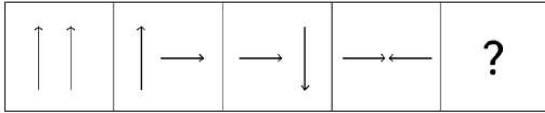
Question ID : 264330146767

Status : Answered

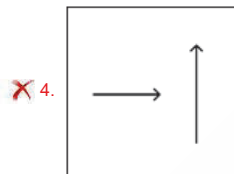
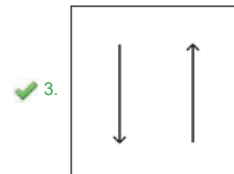
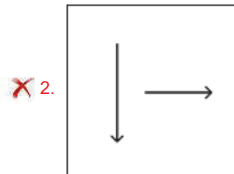
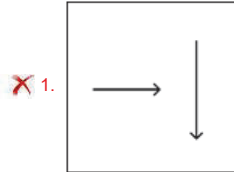
Chosen Option : 2



Q.8 Identify the figure given in the options which when put in place of ? will logically complete the series.



Ans



Question ID : 264330146312
Status : Answered
Chosen Option : 3

Q.9 Select the option that represents the letters that, when sequentially placed from left to right in the blanks below, will complete the letter series.

_utt_tt_ttu_

- Ans
- ✗ 1. uutt
 - ✗ 2. tutu
 - ✗ 3. ttuu
 - ✓ 4. tuut

Question ID : 264330147161
Status : Answered
Chosen Option : 4

Q.10 Select the correct mirror image of the given figure when the mirror is placed at MN as shown below.



- Ans
- 1. d ɛ θ n e t J
 - 2. b ɛ θ n e t J
 - 3. p 3 9 u e 1 7
 - 4. b 3 θ n e t J

Question ID : 264330146702
Status : Answered
Chosen Option : 2

Q.11 In a certain code language, 'NATURE' is coded as '279346' and 'LEARNT' is coded as '794621'. What is the code for 'L' in the given code language?

- Ans
- 1. 2
 - 2. 1
 - 3. 7
 - 4. 9

Question ID : 264330147197
Status : Answered
Chosen Option : 2

Q.12 If 'A' stands for '+', 'B' stands for 'x', 'C' stands for '+' and 'D' stands for '-', what will come in place of the question mark (?) in the following equation?

11 B 42 A 3 C 41 D 27 = ?

- Ans
- 1. 171
 - 2. 164
 - 3. 159
 - 4. 168

Question ID : 264330146428
Status : Answered
Chosen Option : 4

Q.13 What should come in place of the question mark (?) in the given series based on the English alphabetical order?

XZY, UVW, RTS, OQR, ?

- Ans
- 1. LNM
 - 2. JKL
 - 3. LMN
 - 4. KML

Question ID : 264330147264
Status : Answered
Chosen Option : 1

Q.14 Which term from among the given options can replace the question mark (?) in the following series to make it logically complete?

CO 29, EQ 27, ? , IU 23, KW 21

- Ans**
- 1. HS 24
 - 2. GS 25
 - 3. HT 24
 - 4. IR 26

Question ID : 264330146967

Status : **Not Attempted and Marked For Review**

Chosen Option : --

Q.15 In a certain code language,
N + V means 'N is the daughter of V',
N - V means 'N is the father of V',
N @ V means 'N is the wife of V',
N × V means 'N is the son of V'.
If B + R × M - P, then how is B related to M?

- Ans**
- 1. Sister
 - 2. Daughter
 - 3. Daughter's daughter
 - 4. Son's daughter

Question ID : 264330147504

Status : **Not Attempted and Marked For Review**

Chosen Option : --

Q.16 Select the option in which the numbers do NOT share the same relationship as that shared by the given pairs of numbers.

(NOTE: Operations should be performed on the whole numbers, without breaking down the numbers into its constituent digits. E.g. 13 - Operations on 13 such as adding/ subtracting /multiplying etc. to 13 can be performed. Breaking down 13 into 1 and 3 and then performing mathematical operations on 1 and 3 is not allowed.)

11 : 35 and 13 : 41

- Ans**
- 1. 19 : 59
 - 2. 23 : 71
 - 3. 32 : 95
 - 4. 16 : 50

Question ID : 264330150905

Status : **Not Attempted and Marked For Review**

Chosen Option : --

Q.17 If 'A' stands for '+', 'B' stands for '×', 'C' stands for '÷' and 'D' stands for '-', what will come in place of the question mark '?' in the following equation?

$$3 B 27 D 5 C 7 A 7 = ?$$

- Ans
- 1. 57
 - 2. 87
 - 3. 77
 - 4. 67

Question ID : 264330147396
Status : Answered
Chosen Option : 3

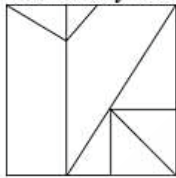
Q.18 Which number from among the given options can replace the question mark (?) in the following series?

83, ?, 92, 107, 101, 116

- Ans
- 1. 81
 - 2. 89
 - 3. 91
 - 4. 98

Question ID : 264330146996
Status : Not Attempted and Marked For Review
Chosen Option : --

Q.19 How many triangles are there in the given figure?



- Ans
- 1. 8
 - 2. 11
 - 3. 9
 - 4. 10

Question ID : 264330150523
Status : Answered
Chosen Option : 2

Q.20 In a certain code language, 'CHASE' is coded as 'IQGBK' and 'WHALE' is coded as 'CQGUK'. What is the code for 'ANCIENT' in the given code language?

- Ans
- 1. GWIRJWZ
 - 2. GWIRKWZ
 - 3. GWIRKMZ
 - 4. GWIPKWZ

Question ID : 264330147404

Status : **Not Attempted and Marked For Review**

Chosen Option : --

Q.21 Three of the following four are alike in a certain way and thus form a group. Which is the one that does NOT belong to that group?

(NOTE: Operations should be performed on the whole numbers, without breaking down the numbers into its constituent digits. E.g., 13 – Operations on 13 such as adding /subtracting /multiplying etc, to 13 can be performed. Breaking down 13 into 1 and 3 and then performing mathematical operations on 1 and 3 is not allowed)

- Ans
- 1. 13 - 144
 - 2. 9 - 63
 - 3. 8 - 48
 - 4. 11 - 99

Question ID : 264330152058

Status : **Marked For Review**

Chosen Option : 1

Q.22 Read the given statements and conclusions carefully. Assuming that the information given in the statements is true, even if it appears to be at variance with commonly known facts, decide which of the given conclusions logically follow(s) from the statements.

Statements:

All flags are symbols.
All symbols are prides.
Some prides are bright.

Conclusions:

(I) All flags are prides.
(II) Some flags are bright is a possibility.
(III) Some symbols are bright is a possibility.

- Ans
- 1. Only conclusion I follows
 - 2. Only conclusion II follows
 - 3. All conclusions I, II and III follow
 - 4. Both conclusions I and II follow

Question ID : 264330147471

Status : **Answered**

Chosen Option : 3

Q.23 'JMOP' is related to 'GJLM' in a certain way based on the English alphabetical order. In the same way, 'EHUK' is related to 'BEGH'. To which of the following is 'DGIJ' related, following the same logic?

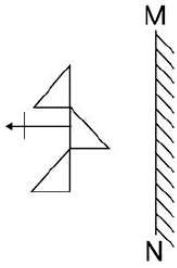
- Ans**
- 1. ADFG
 - 2. ABEF
 - 3. AEFI
 - 4. ADFI

Question ID : 264330150688
Status : Not Answered
Chosen Option : --

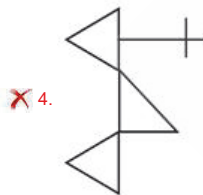
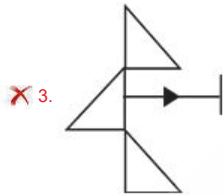
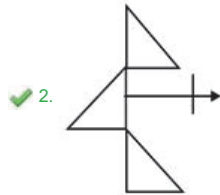
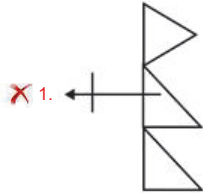


Teachingninja.in

Q.24 Select the correct mirror image of the given figure when the mirror is placed at MN as shown.



Ans



Teachingninja.in

Question ID : 264330146501
Status : Answered
Chosen Option : 2

Q.25 If it was Thursday yesterday, then what was the day of the week 73 days ago from today?

- Ans
- 1. Tuesday
 - 2. Wednesday
 - 3. Sunday
 - 4. Thursday

Question ID : 264330146318
Status : Not Answered
Chosen Option : --

Section : Quantitative Aptitude

Q.1 Study the given table and answer the question that follows.

The table indicates the number of products sold by four different companies.

Products	Companies			
	A	B	C	D
Top quality	330	230	221	230
Medium quality	340	345	450	320
Low quality	488	550	580	220

Which company produces the maximum low-quality products?

- Ans
- 1. B
 - 2. A
 - 3. C
 - 4. D

Question ID : 264330147831
Status : Answered
Chosen Option : 3

Q.2 Find 2 numbers such that their mean proportional is 25 and their third proportional is 25.

- Ans
- 1. 5 and 5
 - 2. 5 and 25
 - 3. 25 and 125
 - 4. 25 and 25

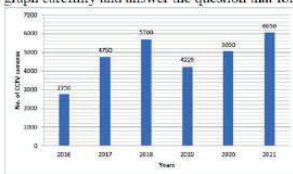
Question ID : 264330147751
Status : Not Answered
Chosen Option : --

Q.3 Ravi borrowed some money at the rate of 5% per annum for the first three years, 8% per annum for the next two years, and 10% per annum for the period beyond 5 years. If he paid a total simple interest of ₹12,750 at the end of 7 years, then how much money did he borrow?

- Ans**
- 1. ₹25,000
 - 2. ₹26,000
 - 3. ₹27,000
 - 4. ₹24,000

Question ID : 264330151372
Status : Not Answered
Chosen Option : --

Q.4 The following bar graph represents the number of CCTV cameras manufactured by a company over six years. Study the graph carefully and answer the question that follows:



What is the ratio of the total number of CCTV cameras manufactured in the years 2016 and 2017 to the total number of CCTV cameras manufactured in the years 2020 and 2021?

- Ans**
- 1. 37 : 25
 - 2. 39 : 25
 - 3. 25 : 39
 - 4. 25 : 37

Question ID : 264330150550
Status : Answered
Chosen Option : 4

Q.5 4 men and 8 women complete a job in 10 days, and 5 men and 24 women complete the same work in 4 days. In how many days will 1 man and 1 woman complete the same work?

- Ans**
- 1. $63\frac{1}{3}$ days
 - 2. $69\frac{7}{9}$ days
 - 3. $67\frac{1}{3}$ days
 - 4. $62\frac{2}{9}$ days

Question ID : 264330147829
Status : Not Answered
Chosen Option : --

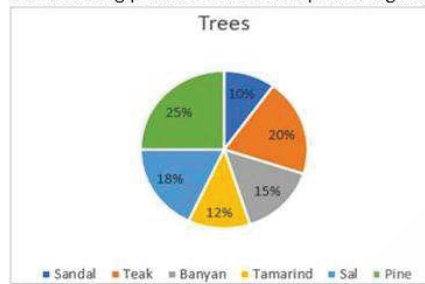
Q.6 The given expression is equal to:

$$1 - \frac{\tan^2 \theta}{\sec^2 \theta}$$

- Ans
- 1. $\sin^2 \theta \cos^2 \theta$
 - 2. $\sin^2 \theta \cot^2 \theta$
 - 3. $\cot^2 \theta \cos^2 \theta$
 - 4. $\tan^2 \theta \cos^2 \theta$

Question ID : 264330150036
Status : Not Answered
Chosen Option : --

Q.7 The following pie chart shows the percentage distribution of trees in a forest.



If the forest has 7500 pine trees, then find how many trees are there in the forest?

- Ans
- 1. 22,500
 - 2. 30,000
 - 3. 27,000
 - 4. 7,500

Question ID : 264330147638
Status : Not Answered
Chosen Option : --

Q.8 If $\alpha \sin 45^\circ = \beta \operatorname{cosec} 30^\circ$, then α^4 / β^4 is:

- Ans
- 1. 4^4
 - 2. 3^3
 - 3. 2^3
 - 4. 4^3

Question ID : 264330148442
Status : Not Answered
Chosen Option : --

Q.9 The marked price of a cooler is ₹800. It is sold at a discount of 10%. Due to the festival season, the shopkeeper allowed a further discount of 5%. Find the selling price of the cooler.

- Ans
- 1. ₹688
 - 2. ₹684
 - 3. ₹678
 - 4. ₹672

Question ID : 264330147857
Status : Not Answered
Chosen Option : --

Q.10 On parallel tracks, two trains of equal length are moving at speeds of 46 and 36 kilometres per hour in the same direction. In 36 seconds, the quicker train overtakes the slower one. The length of each train is:

- Ans
- 1. 60 metre
 - 2. 50 metre
 - 3. 56 metre
 - 4. 52 metre

Question ID : 264330146456
Status : Not Answered
Chosen Option : --

Q.11 If $a + b + c = 15$ and $ab + bc + ca = 22$, then find the value of $a^2 + b^2 + c^2$.

- Ans
- 1. 131
 - 2. 141
 - 3. 161
 - 4. 181

Question ID : 264330147987
Status : Not Answered
Chosen Option : --

Q.12 One angle of an isosceles obtuse triangle is $28\frac{1}{2}^\circ$. Find the measure of its obtuse angle in degrees.

- Ans
- 1. 132°
 - 2. 112°
 - 3. 121°
 - 4. 123°

Question ID : 264330147977
Status : Not Answered
Chosen Option : --

Q.13 In $\triangle ABC$ and $\triangle PQR$, $\angle B = \angle Q$, $\angle C = \angle R$ and $AB = 2PQ$, then the two triangles are _____.

- Ans
- 1. congruent as well as similar
 - 2. neither similar nor congruent
 - 3. similar but not congruent
 - 4. congruent but not similar

Question ID : 264330147641
Status : Not Answered
Chosen Option : --

Q.14 The dome of a residential tower is in the form of a hemisphere with a radius of 560 cm. Find the cost of painting it at the rate of ₹25 per m^2 . (Take $\pi = \frac{22}{7}$)

- Ans
- 1. ₹4,928
 - 2. ₹4,982
 - 3. ₹4,298
 - 4. ₹4,289

Question ID : 264330146436
Status : Not Answered
Chosen Option : --

Q.15 If the angles P, Q and R of $\triangle PQR$ satisfy the relation $2R - P = Q - R$, then find the measure of $\angle R$.

- Ans
- 1. 45°
 - 2. 60°
 - 3. 50°
 - 4. 55°

Question ID : 264330148105
Status : Not Answered
Chosen Option : --

Q.16 Find the distance (in cm) between the centres of two circles having radii of 32 cm and 24 cm, respectively, if the length of a direct common tangent to the two circles is given as $24\sqrt{7}$ cm.

- Ans
- 1. 60
 - 2. 65
 - 3. 64
 - 4. 63

Question ID : 264330146834
Status : Not Answered
Chosen Option : --

Q.17 Find the value of $\cot^2 B - \operatorname{cosec}^2 B$ for $0 < B < 90^\circ$.

- Ans
- 1. 1
 - 2. 2
 - 3. -1
 - 4. -2

Question ID : 264330148900
Status : Not Answered
Chosen Option : --

Q.18 What will be the present value of ₹13,230 due two years hence, when the interest is compounded at the rate of 5% per annum?

- Ans
- 1. ₹13,000
 - 2. ₹10,500
 - 3. ₹11,500
 - 4. ₹12,000

Question ID : 264330147968
Status : Not Answered
Chosen Option : --

Q.19 A tradesman marks his goods at such a price that after allowing a discount of 31%, he makes a profit of 15%. What is the marked price of an article whose cost price is ₹3,420?

- Ans
- 1. ₹5,700
 - 2. ₹5,200
 - 3. ₹5,475
 - 4. ₹5,550

Question ID : 264330148085
Status : Not Answered
Chosen Option : --

Q.20 A man invests ₹44,000 in some shares in the ratio 1 : 4 : 5 which pay dividends of 10%, 15% and 25% on his investment for one year, respectively. His total dividend income is:

- Ans
- 1. ₹7,850
 - 2. ₹8,580
 - 3. ₹7,970
 - 4. ₹8,510

Question ID : 264330147823
Status : Not Answered
Chosen Option : --

Q.21 The value of $2\frac{3}{5} \div \left[2\frac{1}{3} \div \left\{ 4\frac{1}{3} - \left(2\frac{1}{2} + \frac{2}{3} \right) \right\} \right]$ is equal to:

- Ans
- ✓ 1. $1\frac{3}{10}$
 - ✗ 2. $2\frac{7}{10}$
 - ✗ 3. $2\frac{3}{7}$
 - ✗ 4. $1\frac{3}{7}$

Question ID : 264330149331
Status : Not Answered
Chosen Option : --

Q.22 An item is sold for ₹2,744, and the seller earns 12% profit. What should be the selling price (in ₹) to earn only 5% profit?

- Ans
- ✓ 1. ₹2,572.50
 - ✗ 2. ₹2,725.50
 - ✗ 3. ₹2,527.50
 - ✗ 4. ₹2,275.50

Question ID : 264330148123
Status : Not Answered
Chosen Option : --

Q.23 Simplify the following expression.

$$\{[(x - 5)(x - 1)] - [(9x - 5)(9x - 1)]\} \div 16x$$

- Ans
- ✗ 1. $2x(5x - 3)$
 - ✓ 2. $-(5x - 3)$
 - ✗ 3. $x(5x - 3)$
 - ✗ 4. $-6x(5x - 3)$

Question ID : 264330151138
Status : Not Answered
Chosen Option : --

Q.24 Aman decided to cover a distance of 12 km in 78 minutes. He decided to cover the initial two-thirds of the distance at 10 km/h and the remaining at some different speed. Find the speed for the last one-third of the distance.

- Ans
- 1. 7.8 km/h
 - 2. 8 km/h
 - 3. 8.4 km/h
 - 4. 9 km/h

Question ID : 264330148083
Status : Not Answered
Chosen Option : --

Q.25 If $x + \frac{1}{x} = 2$, then find the value of $x^{1823} + \frac{1}{x^{1929}}$

- Ans
- 1. 2
 - 2. 1
 - 3. 0
 - 4. -1

Question ID : 264330148064
Status : Not Answered
Chosen Option : --

Section : General Awareness

Q.1 Which of the following places is the origin of river Indus?

- Ans
- 1. Bokhar Chu
 - 2. Gangotri Glacier
 - 3. Chemayungdung Glacier
 - 4. Zemu Glacier

Question ID : 264330149381
Status : Marked For Review
Chosen Option : 3

Q.2 Who among the following Indian dancers was awarded the Sangeet Natak Akademi Award 2020 for contribution to Odissi dance?

- Ans
- 1. Brajendra Kumar Pattnaik
 - 2. Balkar Sidhu
 - 3. Rabindra Atibudhi
 - 4. Pasumarthy Vithal

Question ID : 264330145803
Status : Not Answered
Chosen Option : --

Q.3 The correct electronic configuration of Cu is:

- Ans
- 1. [Ar]3d⁹4s²
 - 2. [Kr]3d⁹4s²
 - 3. [Kr]3d¹⁰4s¹
 - 4. [Ar]3d¹⁰4s¹

Question ID : 264330145826

Status : **Not Attempted and Marked For Review**

Chosen Option : --

Q.4 క్రింది ఏ పండుగ ప్రధానంగా మణిపూర్లో ముడిపడి ఉంది?

- Ans
- 1. యాషాన్
 - 2. బైసాఖి
 - 3. వాంగాలా
 - 4. హరేలీ

Question ID : 264330145778

Status : **Marked For Review**

Chosen Option : 4

Q.5 Which of the following statements is correct about the Directive Principles of State Policy of the Indian Constitution ?

- Ans
- 1. Consists of Art. 12 to 32
 - 2. It has been borrowed from the Soviet Union
 - 3. They are enumerated in Part II of the Constitution
 - 4. Is described as 'novel feature of the Constitution'

Question ID : 264330146558

Status : **Marked For Review**

Chosen Option : 4

Q.6 What is the state of matter that exhibits behaviour uniformity?

- Ans
- 1. Snow
 - 2. Solid
 - 3. Liquid
 - 4. Gas

Question ID : 264330144472

Status : **Marked For Review**

Chosen Option : 2

Q.7 At what temperature (in degree Celsius) is milk heated for 15 to 30 seconds to kill microbes in the pasteurisation method?

- Ans
- 1. 45
 - 2. 100
 - 3. 70
 - 4. 20

Question ID : 264330149210
Status : **Marked For Review**
Chosen Option : 2

Q.8 Which state's governor approved the Prohibition of Online Gaming and Regulation of Online Games Bill 2022?

- Ans
- 1. Tamil Nadu
 - 2. Andhra Pradesh
 - 3. Gujarat
 - 4. Punjab

Question ID : 264330146258
Status : **Marked For Review**
Chosen Option : 1

Q.9 In the indian constitution the concept of 'equality before law' is borrowed from the _____ constitution.

- Ans
- 1. British
 - 2. Canadian
 - 3. US
 - 4. Irish

Question ID : 264330146556
Status : **Not Answered**
Chosen Option : --

Q.10 Gross primary deficit is equal to _____.

- Ans
- 1. difference between gross fiscal deficit and interest payments
 - 2. difference between total expenditure and total receipts
 - 3. difference between net borrowings and net capital receipts
 - 4. difference between revenue deficit and capital expenditure

Question ID : 264330151264
Status : **Marked For Review**
Chosen Option : 3

Q.11 Who among the following Indian shuttlers has won the Silver medal in the u-17 women's singles at Badminton Asia Junior Championship 2022?

- Ans
- 1. Amar Verma
 - 2. Aryan Shah
 - 3. Unnati Hooda
 - 4. Abhishek Kiran

Question ID : 264330154815

Status : Not Attempted and Marked For Review

Chosen Option : --

Q.12 Which of the following was the capital of the Hindu Shahi kingdom?

- Ans
- 1. Srinagar
 - 2. Lahore
 - 3. Waihind
 - 4. Multan

Question ID : 264330148553

Status : Not Attempted and Marked For Review

Chosen Option : --

Q.13 Pandavani Folk singer _____ is a Padma Bhushan Awardee of 2003.

- Ans
- 1. Sulakshana Pandit
 - 2. Teejan Bai
 - 3. Mamta Chandrakar
 - 4. Ila Arun

Question ID : 264330145795

Status : Not Attempted and Marked For Review

Chosen Option : --

Q.14 Which of the following players won Silver at the Tokyo Olympics 2020?

- Ans
- 1. Mirabai Chanu and Sushil Kumar
 - 2. PV Sindhu and Sushil Kumar
 - 3. Ravi Kumar Dahiya and Mirabai Chanu
 - 4. Ravi Kumar Dahiya and Sushil Kumar

Question ID : 264330145983

Status : Marked For Review

Chosen Option : 4

Q.15 In which session of the Indian National Congress was the resolution declaring Poorna Swaraj passed?

- Ans**
- 1. Calcutta
 - 2. Bombay
 - 3. Madras
 - 4. Lahore

Question ID : 264330150224
Status : **Marked For Review**
Chosen Option : 4

Q.16 With reference to Manipuri classical dance which of the following statements is correct?

- a) Lai Haraoba is the earliest form of Manipuri dance.
- b) Ras, Sankirtana and Thang-Ta are the most popular forms of this dance.
- c) Manipuri dance has its origin in the Jain traditional dance form.

- Ans**
- 1. a, b, c
 - 2. Both a and c
 - 3. Both a and b
 - 4. Both b and c

Question ID : 264330150812
Status : **Not Answered**
Chosen Option : --

Q.17 According to David Ricardo, during a high deficit situation taxation and borrowing are ____ means of spending.

- Ans**
- 1. Prudent
 - 2. Differentiated
 - 3. equivalent
 - 4. Subsidised

Question ID : 264330145869
Status : **Not Answered**
Chosen Option : --

Q.18 According to Ministry of Social Justice and Empowerment, Government of India, What was the percentage of population living below the poverty line in Chhattisgarh in the year 2004-05?

- Ans**
- 1. 35.9%
 - 2. 40.9%
 - 3. 32%
 - 4. 49%

Question ID : 264330149634
Status : **Not Attempted and Marked For Review**
Chosen Option : --

Q.19 At the Sportstar Aces Awards in 2023, which state received the prize for the best state for sports promotion?

- Ans
- 1. Punjab
 - 2. Odisha
 - 3. Madhya Pradesh
 - 4. Haryana

Question ID : 264330146292
Status : Not Answered
Chosen Option : --

Q.20 ఏ పంచవర్ష ప్రణాళిక విడుదలైనప్పటి నుండి ప్రభుత్వ రంగానికి ప్రాధాన్యత తగ్గింది?

- Ans
- 1. ఎనిమిదవ ప్రణాళిక
 - 2. తొమ్మిదవ ప్రణాళిక
 - 3. పదకొండవ ప్రణాళిక
 - 4. ఏడవ ప్రణాళిక

Question ID : 264330145863
Status : Marked For Review
Chosen Option : 1

Q.21 Which of the following is an objective of the Government Budget?

- A) GDP Growth
- B) Reallocation of Resources
- C) Balanced Regional Growth

- Ans
- 1. Only A
 - 2. All – A, B and C
 - 3. Only A and C
 - 4. Only B

Question ID : 264330145690
Status : Answered
Chosen Option : 2

Q.22 Which organisation formerly known as the Imperial Council of Agricultural Research and founded on July 16, 1929, is in charge of Agricultural Research and Education in India?

- Ans
- 1. Food Corporation of India (FCI)
 - 2. Agricultural and Processed Food Products Export Development Authority (APEDA)
 - 3. National Bank for Agriculture and Rural Development (NABARD)
 - 4. Indian Council of Agricultural Research (ICAR)

Question ID : 264330149391
Status : Marked For Review
Chosen Option : 4

Q.23 Which of the following states has the National Academy of Sciences?

- Ans
- 1. Uttarakhand
 - 2. Telangana
 - 3. Uttar Pradesh
 - 4. Karnataka

Question ID : 264330150387
Status : Not Attempted and Marked For Review
Chosen Option : --

Q.24 Name an oval-shaped range of hills sculpted by glacial flow.

- Ans
- 1. Sandur
 - 2. Drumlins
 - 3. Moraines
 - 4. Esker

Question ID : 264330145644
Status : Not Attempted and Marked For Review
Chosen Option : --

Q.25 విభిన్న మైనదానిని గుర్తించండి.

- Ans
- 1. అంతర్గత విలువ
 - 2. న్యాయపరమైన ప్రతిపాదన
 - 3. ఆదేశిత ద్రవ్యం
 - 4. జారీ చేసే సంస్థ యొక్క హామీ

Question ID : 264330144687
Status : Not Attempted and Marked For Review
Chosen Option : --