



Teachingninja.in



Latest Govt Job updates



Private Job updates



Free Mock tests available

Visit - teachingninja.in



Teachingninja.in

CGPSC SO

**Previous Year Paper
(Chemistry)
09 Jul, 2017**



Chhattisgarh Public Service Commission

Notations :

- 1.Options shown in green color and with ✓ icon are correct.
- 2.Options shown in red color and with ✗ icon are incorrect.

Question Paper Name:	Scientific Officer Chemistry
Subject Name:	Scientific Officer (Chemistry)
Duration:	180
Calculator:	None
Magnifying Glass Required?:	No
Ruler Required?:	No
Eraser Required?:	No
Scratch Pad Required?:	No
Rough Sketch/Notepad Required?:	No
Protractor Required?:	No

	Scientific Officer (Chemistry)
Group Maximum Duration :	120
Group Minimum Duration :	120
Revisit allowed for view? :	No
Revisit allowed for edit? :	No
	Scientific Officer (Chemistry)
Mandatory or Optional:	Mandatory
Display Number Panel:	Yes
Group All Questions:	No

Question Number : 1 Question Id : 696471151 Question Type : MCQ Display Question Number : Yes Single Line Question Option : No Option Orientation : Vertical Correct : 2 Wrong : 1

In pharmacopoeia description of preparation are called:

Options :

- 1. ✗ Medicines
- 2. ✓ Monographs
- 3. ✗ Generic medicine
- 4. ✗ Formulation
- 5. ✗ Pharmacognosy

Question Number : 1 Question Id : 696471151 Question Type : MCQ Display Question Number : Yes Single Line Question Option : No Option Orientation : Vertical

Correct : 2 Wrong : 1

In pharmacopoeia description of preparation are called:

Options :

1. ✗ Medicines
2. ✓ Monographs
3. ✗ Generic medicine
4. ✗ Formulation
5. ✗ Pharmacognosy

Question Number : 2 Question Id : 696471152 Question Type : MCQ Display Question Number : Yes Single Line Question Option : No Option Orientation : Vertical

Correct : 2 Wrong : 1

Indian Pharmacopoeia (IP) which is more or less follows_____.

Options :

1. ✗ USP
2. ✗ JP
3. ✗ WHO
4. ✓ BP
5. ✗ EP

Question Number : 2 Question Id : 696471152 Question Type : MCQ Display Question Number : Yes Single Line Question Option : No Option Orientation : Vertical

Correct : 2 Wrong : 1

Indian Pharmacopoeia (IP) which is more or less follows_____.

Options :

1. ✗ USP
2. ✗ JP
3. ✗ WHO
4. ✓ BP
5. ✗ EP

Question Number : 3 Question Id : 696471153 Question Type : MCQ Display Question Number : Yes Single Line Question Option : No Option Orientation : Vertical

Correct : 2 Wrong : 1

Functional group present in any organic molecule can be identified by_____.

Options :

1. ✗ Proton NMR
2. ✗ Carbon NMR
3. ✗ Mass spectrophotometer
4. ✗ UV Visible spectroscopy
5. ✓ Infra-red spectroscopy



Question Number : 3 Question Id : 696471153 Question Type : MCQ Display Question Number : Yes Single Line Question Option : No Option Orientation : Vertical

Correct : 2 Wrong : 1

Functional group present in any organic molecule can be identified by _____.

Options :

1. ✗ Proton NMR
2. ✗ Carbon NMR
3. ✗ Mass spectrophotometer
4. ✗ UV Visible spectroscopy
5. ✓ Infra-red spectroscopy

Question Number : 4 Question Id : 696471154 Question Type : MCQ Display Question Number : Yes Single Line Question Option : No Option Orientation : Vertical

Correct : 2 Wrong : 1

Terpene has the general formula _____.

Options :

1. ✗ $C_{10}H_{18}$
2. ✗ $C_{10}H_{20}$
3. ✗ $C_{10}H_{12}$
4. ✓ $C_{10}H_{16}$
5. ✗ $C_{10}H_{14}$

Question Number : 4 Question Id : 696471154 Question Type : MCQ Display Question Number : Yes Single Line Question Option : No Option Orientation : Vertical

Correct : 2 Wrong : 1

Terpene has the general formula _____.

Options :

1. ✗ $C_{10}H_{18}$
2. ✗ $C_{10}H_{20}$
3. ✗ $C_{10}H_{12}$
4. ✓ $C_{10}H_{16}$
5. ✗ $C_{10}H_{14}$

Question Number : 5 Question Id : 696471155 Question Type : MCQ Display Question Number : Yes Single Line Question Option : No Option Orientation : Vertical

Correct : 2 Wrong : 1

Natural rubber is one of the most important _____.

Options :

1. ✗ Terpene
2. ✗ Terpenoid



- 3. ✓ Polyterpenoid
- 4. ✗ Carotenoid
- 5. ✗ Camphor

Question Number : 5 Question Id : 696471155 Question Type : MCQ Display Question Number : Yes Single Line Question Option : No Option Orientation : Vertical

Correct : 2 Wrong : 1

Natural rubber is one of the most important _____.

Options :

- 1. ✗ Terpene
- 2. ✗ Terpenoid
- 3. ✓ Polyterpenoid
- 4. ✗ Carotenoid
- 5. ✗ Camphor

Question Number : 6 Question Id : 696471156 Question Type : MCQ Display Question Number : Yes Single Line Question Option : No Option Orientation : Vertical

Correct : 2 Wrong : 1

Due to the presence of _____, terpenoids are easily oxidized by almost all oxidizing agents.

Options :

- 1. ✓ Olefinic bonds
- 2. ✗ Unstable bonds
- 3. ✗ Functional groups
- 4. ✗ Oxygen atom
- 5. ✗ Volatile nature

Question Number : 6 Question Id : 696471156 Question Type : MCQ Display Question Number : Yes Single Line Question Option : No Option Orientation : Vertical

Correct : 2 Wrong : 1

Due to the presence of _____, terpenoids are easily oxidized by almost all oxidizing agents.

Options :

- 1. ✓ Olefinic bonds
- 2. ✗ Unstable bonds
- 3. ✗ Functional groups
- 4. ✗ Oxygen atom
- 5. ✗ Volatile nature

Question Number : 7 Question Id : 696471157 Question Type : MCQ Display Question Number : Yes Single Line Question Option : No Option Orientation : Vertical

Correct : 2 Wrong : 1

Which of the following is one of the most widely used methods for the isolation of the terpenoids from natural sources?

Options :



1. ✖ Adsorption method
2. ✖ Microwave extraction
3. ✖ Expression method
4. ✔ Steam distillation
5. ✖ Thermal extraction

Question Number : 7 Question Id : 696471157 Question Type : MCQ Display Question Number : Yes Single Line Question Option : No Option Orientation : Vertical

Correct : 2 Wrong : 1

Which of the following is one of the most widely used methods for the isolation of the terpenoids from natural sources?

Options :

1. ✖ Adsorption method
2. ✖ Microwave extraction
3. ✖ Expression method
4. ✔ Steam distillation
5. ✖ Thermal extraction

Question Number : 8 Question Id : 696471158 Question Type : MCQ Display Question Number : Yes Single Line Question Option : No Option Orientation : Vertical

Correct : 2 Wrong : 1

Citral on reduction with **sodium/amalgam** yields an alcohol _____, while on oxidation with silver oxide yields _____.

Options :

1. ✖ Geraniol; Geraric acid
2. ✖ Geranic acid; Geranol
3. ✖ Geranon; Geranic acid
4. ✖ Glyoxal; Glyoxylic acid
5. ✔ Geraniol; Geranic acid

Question Number : 8 Question Id : 696471158 Question Type : MCQ Display Question Number : Yes Single Line Question Option : No Option Orientation : Vertical

Correct : 2 Wrong : 1

Citral on reduction with **sodium/amalgam** yields an alcohol _____, while on oxidation with silver oxide yields _____.

Options :

1. ✖ Geraniol; Geraric acid
2. ✖ Geranic acid; Geranol
3. ✖ Geranon; Geranic acid
4. ✖ Glyoxal; Glyoxylic acid
5. ✔ Geraniol; Geranic acid



Question Number : 9 Question Id : 696471159 Question Type : MCQ Display Question Number : Yes Single Line Question Option : No Option Orientation : Vertical

Correct : 2 Wrong : 1

Geraniol is present in _____ and oxidation of Geraniol yields _____.

Options :

1. ✖ Lemon; Citronella
2. ✔ Lemon grass; Citral-A
3. ✖ Geranium; Rhodinol
4. ✖ Lavender; Citroacetone
5. ✖ Orange; Citral-C

Question Number : 9 Question Id : 696471159 Question Type : MCQ Display Question Number : Yes Single Line Question Option : No Option Orientation : Vertical

Correct : 2 Wrong : 1

Geraniol is present in _____ and oxidation of Geraniol yields _____.

Options :

1. ✖ Lemon; Citronella
2. ✔ Lemon grass; Citral-A
3. ✖ Geranium; Rhodinol
4. ✖ Lavender; Citroacetone
5. ✖ Orange; Citral-C

Question Number : 10 Question Id : 696471160 Question Type : MCQ Display Question Number : Yes Single Line Question Option : No Option Orientation : Vertical

Correct : 2 Wrong : 1

α -Terpeneol can be best synthesized by _____ reaction.

Options :

1. ✖ Vilsmeier-Haack
2. ✔ Diel's Alder
3. ✖ Perkin Elmer
4. ✖ Kumada coupling
5. ✖ Organometallic

Question Number : 10 Question Id : 696471160 Question Type : MCQ Display Question Number : Yes Single Line Question Option : No Option Orientation : Vertical

Correct : 2 Wrong : 1

α -Terpeneol can be best synthesized by _____ reaction.

Options :

1. ✖ Vilsmeier-Haack
2. ✔ Diel's Alder

- 3. ✖ Perkin Elmer
- 4. ✖ Kumada coupling
- 5. ✖ Organometallic

Question Number : 11 Question Id : 696471161 Question Type : MCQ Display Question Number : Yes Single Line Question Option : No Option Orientation : Vertical

Correct : 2 Wrong : 1

Menthone is having _____ chiral centres and it exists in _____ optically active form.

Options :

- 1. ✔ Two; Four
- 2. ✖ Three; Nine
- 3. ✖ Three; Six
- 4. ✖ Four; Sixteen
- 5. ✖ One; Two

Question Number : 11 Question Id : 696471161 Question Type : MCQ Display Question Number : Yes Single Line Question Option : No Option Orientation : Vertical

Correct : 2 Wrong : 1

Menthone is having _____ chiral centres and it exists in _____ optically active form.

Options :

- 1. ✔ Two; Four
- 2. ✖ Three; Nine
- 3. ✖ Three; Six
- 4. ✖ Four; Sixteen
- 5. ✖ One; Two

Question Number : 12 Question Id : 696471162 Question Type : MCQ Display Question Number : Yes Single Line Question Option : No Option Orientation : Vertical

Correct : 2 Wrong : 1

Zingiberene on heating with sulphur, undergoes dehydrogenation to give _____.

Options :

- 1. ✖ Camphor
- 2. ✖ Zingiberic acid
- 3. ✔ Cadalene
- 4. ✖ Bisabolene
- 5. ✖ Terephthalic acid

Question Number : 12 Question Id : 696471162 Question Type : MCQ Display Question Number : Yes Single Line Question Option : No Option Orientation : Vertical

Correct : 2 Wrong : 1

Zingiberene on heating with sulphur, undergoes dehydrogenation to give _____.

Options :

1. ✖ Camphor
2. ✖ Zingiberic acid
3. ✔ Cadalene
4. ✖ Bisabolene
5. ✖ Terephthalic acid

Question Number : 13 Question Id : 696471163 Question Type : MCQ Display Question Number : Yes Single Line Question Option : No Option Orientation : Vertical

Correct : 2 Wrong : 1

In the Phytol molecule, there are _____ chiral centres and the natural Phytol is _____.

Options :

1. ✖ two; strongly dextrorotatory
2. ✖ three; weakly dextrorotatory
3. ✖ four; weakly laevorotatory
4. ✖ two; weakly laevorotatory
5. ✔ two; weakly dextrorotatory

Question Number : 13 Question Id : 696471163 Question Type : MCQ Display Question Number : Yes Single Line Question Option : No Option Orientation : Vertical

Correct : 2 Wrong : 1

In the Phytol molecule, there are _____ chiral centres and the natural Phytol is _____.

Options :

1. ✖ two; strongly dextrorotatory
2. ✖ three; weakly dextrorotatory
3. ✖ four; weakly laevorotatory
4. ✖ two; weakly laevorotatory
5. ✔ two; weakly dextrorotatory

Question Number : 14 Question Id : 696471164 Question Type : MCQ Display Question Number : Yes Single Line Question Option : No Option Orientation : Vertical

Correct : 2 Wrong : 1

In Abietic acid, carboxylic group is attached to _____ carbon atom.

Options :

1. ✖ Primary
2. ✖ Secondary
3. ✔ Tertiary
4. ✖ Quaternary
5. ✖ Axial

Question Number : 14 Question Id : 696471164 Question Type : MCQ Display Question Number : Yes Single Line Question Option : No Option Orientation : Vertical

Correct : 2 Wrong : 1

In Abietic acid, carboxylic group is attached to _____ carbon atom.

Options :

1. ✗ Primary
2. ✗ Secondary
3. ✓ Tertiary
4. ✗ Quaternary
5. ✗ Axial

Question Number : 15 Question Id : 696471165 Question Type : MCQ Display Question Number : Yes Single Line Question Option : No Option Orientation : Vertical

Correct : 2 Wrong : 1

Characteristic reddish-purple color of onions is due to the presence of _____.

Options :

1. ✗ Chlorophyll
2. ✓ Cyanidin
3. ✗ Lycopene
4. ✗ Carotene
5. ✗ Carotenoids

Question Number : 15 Question Id : 696471165 Question Type : MCQ Display Question Number : Yes Single Line Question Option : No Option Orientation : Vertical

Correct : 2 Wrong : 1

Characteristic reddish-purple color of onions is due to the presence of _____.

Options :

1. ✗ Chlorophyll
2. ✓ Cyanidin
3. ✗ Lycopene
4. ✗ Carotene
5. ✗ Carotenoids

Question Number : 16 Question Id : 696471166 Question Type : MCQ Display Question Number : Yes Single Line Question Option : No Option Orientation : Vertical

Correct : 2 Wrong : 1

Apigenin belongs to _____ class of compounds, which is present as _____.

Options :

1. ✗ Oxazole; alkaloid
2. ✗ Oxadiazole; alkaloid

- 3. ✓ Flavone; plant pigment
- 4. ✗ Carbohydrate; hormone
- 5. ✗ Triazole; steroid

Question Number : 16 Question Id : 696471166 Question Type : MCQ Display Question Number : Yes Single Line Question Option : No Option Orientation : Vertical

Correct : 2 Wrong : 1

Apigenin belongs to _____ class of compounds, which is present as _____.

Options :

- 1. ✗ Oxazole; alkaloid
- 2. ✗ Oxadiazole; alkaloid
- 3. ✓ Flavone; plant pigment
- 4. ✗ Carbohydrate; hormone
- 5. ✗ Triazole; steroid

Question Number : 17 Question Id : 696471167 Question Type : MCQ Display Question Number : Yes Single Line Question Option : No Option Orientation : Vertical

Correct : 2 Wrong : 1

Apigenin is useful for the treatment of _____ in humans.

Options :

- 1. ✓ Neurological disorders
- 2. ✗ Cardiac disorders
- 3. ✗ Diabetes mellitus
- 4. ✗ Diabetes insipidus
- 5. ✗ Obesity

Question Number : 17 Question Id : 696471167 Question Type : MCQ Display Question Number : Yes Single Line Question Option : No Option Orientation : Vertical

Correct : 2 Wrong : 1

Apigenin is useful for the treatment of _____ in humans.

Options :

- 1. ✓ Neurological disorders
- 2. ✗ Cardiac disorders
- 3. ✗ Diabetes mellitus
- 4. ✗ Diabetes insipidus
- 5. ✗ Obesity

Question Number : 18 Question Id : 696471168 Question Type : MCQ Display Question Number : Yes Single Line Question Option : No Option Orientation : Vertical

Correct : 2 Wrong : 1

Luteolin is a natural plant pigment, which belongs to the class of _____ and is _____ in colour.



Options :

1. ✖ Imidazole; Red
2. ✖ Pyrazole; Violet
3. ✖ Pyrimidine; Orange
4. ✖ Thiophene; Blue
5. ✔ Flavone; Yellow

Question Number : 18 Question Id : 696471168 Question Type : MCQ Display Question Number : Yes Single Line Question Option : No Option Orientation : Vertical

Correct : 2 Wrong : 1

Luteolin is a natural plant pigment, which belongs to the class of _____ and is _____ in colour.

Options :

1. ✖ Imidazole; Red
2. ✖ Pyrazole; Violet
3. ✖ Pyrimidine; Orange
4. ✖ Thiophene; Blue
5. ✔ Flavone; Yellow

Question Number : 19 Question Id : 696471169 Question Type : MCQ Display Question Number : Yes Single Line Question Option : No Option Orientation : Vertical

Correct : 2 Wrong : 1

Myricetin is one of the plant pigments, produced from the parent compound _____ and it is used as _____ compound.

Options :

1. ✖ Beta cells; anti-diabetic
2. ✔ Taxifolin; anti-carcinogenic
3. ✖ Hirsutin hydrochloride; analgesic
4. ✖ Chitosan; antipyretic
5. ✖ Chitin; antiulcer

Question Number : 19 Question Id : 696471169 Question Type : MCQ Display Question Number : Yes Single Line Question Option : No Option Orientation : Vertical

Correct : 2 Wrong : 1

Myricetin is one of the plant pigments, produced from the parent compound _____ and it is used as _____ compound.

Options :

1. ✖ Beta cells; anti-diabetic
2. ✔ Taxifolin; anti-carcinogenic
3. ✖ Hirsutin hydrochloride; analgesic

4. ✖ Chitosan; antipyretic

5. ✖ Chitin; antiulcer

Question Number : 20 Question Id : 696471170 Question Type : MCQ Display Question Number : Yes Single Line Question Option : No Option Orientation : Vertical

Correct : 2 Wrong : 1

Vitexin, a plant pigment commonly present in passion flower inhibits _____, thus contributing to _____.

Options :

1. ✖ Thyroid oxidase; cancer

2. ✔ Thyroid peroxidase; goiter

3. ✖ Thyroid dehydrogenase; goiter

4. ✖ Thyroid reductase; obesity

5. ✖ Thyroid synthase; lung cancer

Question Number : 20 Question Id : 696471170 Question Type : MCQ Display Question Number : Yes Single Line Question Option : No Option Orientation : Vertical

Correct : 2 Wrong : 1

Vitexin, a plant pigment commonly present in passion flower inhibits _____, thus contributing to _____.

Options :

1. ✖ Thyroid oxidase; cancer

2. ✔ Thyroid peroxidase; goiter

3. ✖ Thyroid dehydrogenase; goiter

4. ✖ Thyroid reductase; obesity

5. ✖ Thyroid synthase; lung cancer

Question Number : 21 Question Id : 696471171 Question Type : MCQ Display Question Number : Yes Single Line Question Option : No Option Orientation : Vertical

Correct : 2 Wrong : 1

Butein is a natural pigment commonly found in *Butea monosperma*, which is used for the treatment of _____.

Options :

1. ✖ Lung cancer

2. ✖ Throat cancer

3. ✖ Abdominal cancer

4. ✖ Skin cancer

5. ✔ Breast cancer

Question Number : 21 Question Id : 696471171 Question Type : MCQ Display Question Number : Yes Single Line Question Option : No Option Orientation : Vertical

Correct : 2 Wrong : 1

Butein is a natural pigment commonly found in *Butea monosperma*, which is used for the treatment of _____.

Options :

1. ✖ Lung cancer

2. ✖ Throat cancer
3. ✖ Abdominal cancer
4. ✖ Skin cancer
5. ✔ Breast cancer

Question Number : 22 Question Id : 696471172 Question Type : MCQ Display Question Number : Yes Single Line Question Option : No Option Orientation : Vertical

Correct : 2 Wrong : 1

Which of the following is a plant polyphenol from the flavonoid group, found in many fruits, vegetables, leaves, and grains? It is used as an ingredient in food supplements and beverages.

Options :

1. ✖ Diadzine
2. ✖ Hirsutidin
3. ✖ Aureusin
4. ✖ Vitexin
5. ✔ Quercetin

Question Number : 22 Question Id : 696471172 Question Type : MCQ Display Question Number : Yes Single Line Question Option : No Option Orientation : Vertical

Correct : 2 Wrong : 1

Which of the following is a plant polyphenol from the flavonoid group, found in many fruits, vegetables, leaves, and grains? It is used as an ingredient in food supplements and beverages.

Options :

1. ✖ Diadzine
2. ✖ Hirsutidin
3. ✖ Aureusin
4. ✖ Vitexin
5. ✔ Quercetin

Question Number : 23 Question Id : 696471173 Question Type : MCQ Display Question Number : Yes Single Line Question Option : No Option Orientation : Vertical

Correct : 2 Wrong : 1

Steroid is a(n) _____ with _____ rings arranged in a specific molecular configuration.

Options :

1. ✔ Organic molecule; four
2. ✖ Inorganic molecule; five
3. ✖ Heterocyclic molecule; five
4. ✖ Organometallic molecule; three
5. ✖ Heterocyclic molecule; three

Question Number : 23 Question Id : 696471173 Question Type : MCQ Display Question Number : Yes Single Line Question Option : No Option Orientation : Vertical



Correct : 2 Wrong : 1

Steroid is a(n) _____ with _____ rings arranged in a specific molecular configuration.

Options :

1. ✓ Organic molecule; four
2. ✗ Inorganic molecule; five
3. ✗ Heterocyclic molecule; five
4. ✗ Organometallic molecule; three
5. ✗ Heterocyclic molecule; three

Question Number : 24 Question Id : 696471174 Question Type : MCQ Display Question Number : Yes Single Line Question Option : No Option Orientation : Vertical

Correct : 2 Wrong : 1

Which of the following are the two principal biological functions of Steroids?

Options :

1. ✗ Hormonal control; maintaining body fluidity
2. ✗ Maintenance of body salt level; balancing of fluidity
3. ✓ Membrane fluidity; as steroid hormone receptor
4. ✗ Activation of oxidase enzymes; hormonal balance
5. ✗ Activation of peroxidase enzymes; maintaining balance of fatty acid

Question Number : 24 Question Id : 696471174 Question Type : MCQ Display Question Number : Yes Single Line Question Option : No Option Orientation : Vertical

Correct : 2 Wrong : 1

Which of the following are the two principal biological functions of Steroids?

Options :

1. ✗ Hormonal control; maintaining body fluidity
2. ✗ Maintenance of body salt level; balancing of fluidity
3. ✓ Membrane fluidity; as steroid hormone receptor
4. ✗ Activation of oxidase enzymes; hormonal balance
5. ✗ Activation of peroxidase enzymes; maintaining balance of fatty acid

Question Number : 25 Question Id : 696471175 Question Type : MCQ Display Question Number : Yes Single Line Question Option : No Option Orientation : Vertical

Correct : 2 Wrong : 1

Any steroid molecule is basically composed of _____ and _____.

Options :

1. ✗ three cyclopentane; two cyclohexane
2. ✓ three cyclohexane; one cyclopentane
3. ✗ four cyclohexane; two cyclopentane

- 4. ✖ four cyclopentane; one cyclohexane
- 5. ✖ three cyclopentane; one cyclohexane

Question Number : 25 Question Id : 696471175 Question Type : MCQ Display Question Number : Yes Single Line Question Option : No Option Orientation : Vertical

Correct : 2 Wrong : 1

Any steroid molecule is basically composed of _____ and _____.

Options :

- 1. ✖ three cyclopentane; two cyclohexane
- 2. ✔ three cyclohexane; one cyclopentane
- 3. ✖ four cyclohexane; two cyclopentane
- 4. ✖ four cyclopentane; one cyclohexane
- 5. ✖ three cyclopentane; one cyclohexane

Question Number : 26 Question Id : 696471176 Question Type : MCQ Display Question Number : Yes Single Line Question Option : No Option Orientation : Vertical

Correct : 2 Wrong : 1

Biosynthesis of steroids follows _____ pathway.

Options :

- 1. ✖ Anaerobic
- 2. ✖ Aerobic
- 3. ✖ Non enzyme catalyzed
- 4. ✖ Catabolic
- 5. ✔ Anabolic

Question Number : 26 Question Id : 696471176 Question Type : MCQ Display Question Number : Yes Single Line Question Option : No Option Orientation : Vertical

Correct : 2 Wrong : 1

Biosynthesis of steroids follows _____ pathway.

Options :

- 1. ✖ Anaerobic
- 2. ✖ Aerobic
- 3. ✖ Non enzyme catalyzed
- 4. ✖ Catabolic
- 5. ✔ Anabolic

Question Number : 27 Question Id : 696471177 Question Type : MCQ Display Question Number : Yes Single Line Question Option : No Option Orientation : Vertical

Correct : 2 Wrong : 1

Which of the following is the principal steroidal alcohol synthesized by all animals?

Options :



1. ✖ Androsterone
2. ✖ Bile acids
3. ✖ Testosterone
4. ✖ Estrone
5. ✔ Cholesterol

Question Number : 27 Question Id : 696471177 Question Type : MCQ Display Question Number : Yes Single Line Question Option : No Option Orientation : Vertical

Correct : 2 Wrong : 1

Which of the following is the principal steroidal alcohol synthesized by all animals?

Options :

1. ✖ Androsterone
2. ✖ Bile acids
3. ✖ Testosterone
4. ✖ Estrone
5. ✔ Cholesterol

Question Number : 28 Question Id : 696471178 Question Type : MCQ Display Question Number : Yes Single Line Question Option : No Option Orientation : Vertical

Correct : 2 Wrong : 1

Around 20% of the daily required Cholesterol is produced by _____ alone.

Options :

1. ✖ Intestine
2. ✖ Adrenal glands
3. ✖ Reproductive organs
4. ✔ Liver
5. ✖ Stomach

Question Number : 28 Question Id : 696471178 Question Type : MCQ Display Question Number : Yes Single Line Question Option : No Option Orientation : Vertical

Correct : 2 Wrong : 1

Around 20% of the daily required Cholesterol is produced by _____ alone.

Options :

1. ✖ Intestine
2. ✖ Adrenal glands
3. ✖ Reproductive organs
4. ✔ Liver
5. ✖ Stomach

Question Number : 29 Question Id : 696471179 Question Type : MCQ Display Question Number : Yes Single Line Question Option : No Option Orientation : Vertical

Correct : 2 Wrong : 1

Noble prize in Medicine for the year 1964 was shared between _____ and _____ for their discoveries concerning mechanism of Cholesterol.

Options :

- 1. ✓ Bloch; Lynen
- 2. ✗ Zeigler; Natta
- 3. ✗ Macleod; Banting
- 4. ✗ Jacob; Monod
- 5. ✗ Rous; Huggins

Question Number : 29 Question Id : 696471179 Question Type : MCQ Display Question Number : Yes Single Line Question Option : No Option Orientation : Vertical

Correct : 2 Wrong : 1

Noble prize in Medicine for the year 1964 was shared between _____ and _____ for their discoveries concerning mechanism of Cholesterol.

Options :

- 1. ✓ Bloch; Lynen
- 2. ✗ Zeigler; Natta
- 3. ✗ Macleod; Banting
- 4. ✗ Jacob; Monod
- 5. ✗ Rous; Huggins

Question Number : 30 Question Id : 696471180 Question Type : MCQ Display Question Number : Yes Single Line Question Option : No Option Orientation : Vertical

Correct : 2 Wrong : 1

Animal fat is basically a complex mixture of _____, _____ and _____.

Options :

- 1. ✓ Triglycerides; Phospholipids; Cholesterol
- 2. ✗ RBC; WBC; Cytoplasm
- 3. ✗ Glycerol; Aminolipids; Caprosterol
- 4. ✗ Glycerol; Sphingolipids; Sphingomyelin
- 5. ✗ Triglycerides; RBC; Caprosterol

Question Number : 30 Question Id : 696471180 Question Type : MCQ Display Question Number : Yes Single Line Question Option : No Option Orientation : Vertical

Correct : 2 Wrong : 1

Animal fat is basically a complex mixture of _____, _____ and _____.

Options :

- 1. ✓ Triglycerides; Phospholipids; Cholesterol
- 2. ✗ RBC; WBC; Cytoplasm
- 3. ✗ Glycerol; Aminolipids; Caprosterol

4. ✖ Glycerol; Sphingolipids; Sphingomyelin

5. ✖ Triglycerides; RBC; Caprosterol

Question Number : 31 Question Id : 696471181 Question Type : MCQ Display Question Number : Yes Single Line Question Option : No Option Orientation : Vertical

Correct : 2 Wrong : 1

Higher concentration of oxidized LDL results in the formation of deposition in the walls of arteries, a condition known as:

Options :

1. ✖ HDL

2. ✖ VLDL

3. ✔ Atherosclerosis

4. ✖ Apheresis

5. ✖ Myocardial infarction

Question Number : 31 Question Id : 696471181 Question Type : MCQ Display Question Number : Yes Single Line Question Option : No Option Orientation : Vertical

Correct : 2 Wrong : 1

Higher concentration of oxidized LDL results in the formation of deposition in the walls of arteries, a condition known as:

Options :

1. ✖ HDL

2. ✖ VLDL

3. ✔ Atherosclerosis

4. ✖ Apheresis

5. ✖ Myocardial infarction

Question Number : 32 Question Id : 696471182 Question Type : MCQ Display Question Number : Yes Single Line Question Option : No Option Orientation : Vertical

Correct : 2 Wrong : 1

In the liver, Cholesterol molecule gets oxidized into a number of _____.

Options :

1. ✔ Bile acids

2. ✖ Glucuronic acid

3. ✖ Oxysterols

4. ✖ Amino acids

5. ✖ Lipoproteins

Question Number : 32 Question Id : 696471182 Question Type : MCQ Display Question Number : Yes Single Line Question Option : No Option Orientation : Vertical

Correct : 2 Wrong : 1

In the liver, Cholesterol molecule gets oxidized into a number of _____.

Options :

1. ✓ Bile acids
2. ✗ Glucuronic acid
3. ✗ Oxysterols
4. ✗ Amino acids
5. ✗ Lipoproteins

Question Number : 33 Question Id : 696471183 Question Type : MCQ Display Question Number : Yes Single Line Question Option : No Option Orientation : Vertical

Correct : 2 Wrong : 1

Bile acids are conjugated with taurine or glycine in the liver, and the sodium and potassium salts of these conjugated bile acids are termed as _____.

Options :

1. ✗ Cholesterol
2. ✓ Bile salts
3. ✗ Phospholipids
4. ✗ Caprosterol
5. ✗ Deoxycholic acid

Question Number : 33 Question Id : 696471183 Question Type : MCQ Display Question Number : Yes Single Line Question Option : No Option Orientation : Vertical

Correct : 2 Wrong : 1

Bile acids are conjugated with taurine or glycine in the liver, and the sodium and potassium salts of these conjugated bile acids are termed as _____.

Options :

1. ✗ Cholesterol
2. ✓ Bile salts
3. ✗ Phospholipids
4. ✗ Caprosterol
5. ✗ Deoxycholic acid

Question Number : 34 Question Id : 696471184 Question Type : MCQ Display Question Number : Yes Single Line Question Option : No Option Orientation : Vertical

Correct : 2 Wrong : 1

The radiation in the vibrational Infrared region of the electromagnetic spectrum in terms of unit called _____.

Options :

1. ✗ Wavelength
2. ✓ Wavenumber
3. ✗ Frequency
4. ✗ Overtones
5. ✗ Transmittance



Question Number : 34 Question Id : 696471184 Question Type : MCQ Display Question Number : Yes Single Line Question Option : No Option Orientation : Vertical

Correct : 2 Wrong : 1

The radiation in the vibrational Infrared region of the electromagnetic spectrum in terms of unit called _____.

Options :

1. ✗ Wavelength
2. ✓ Wavenumber
3. ✗ Frequency
4. ✗ Overtones
5. ✗ Transmittance

Question Number : 35 Question Id : 696471185 Question Type : MCQ Display Question Number : Yes Single Line Question Option : No Option Orientation : Vertical

Correct : 2 Wrong : 1

In a given molecule, only those bonds that have a _____ that changes as functions of time are capable of absorbing infrared radiations.

Options :

1. ✗ High electronegativity
2. ✗ Low electronegativity
3. ✓ Dipole moment
4. ✗ Wavenumber
5. ✗ Reduced mass

Question Number : 35 Question Id : 696471185 Question Type : MCQ Display Question Number : Yes Single Line Question Option : No Option Orientation : Vertical

Correct : 2 Wrong : 1

In a given molecule, only those bonds that have a _____ that changes as functions of time are capable of absorbing infrared radiations.

Options :

1. ✗ High electronegativity
2. ✗ Low electronegativity
3. ✓ Dipole moment
4. ✗ Wavenumber
5. ✗ Reduced mass

Question Number : 36 Question Id : 696471186 Question Type : MCQ Display Question Number : Yes Single Line Question Option : No Option Orientation : Vertical

Correct : 2 Wrong : 1

Which of the following spectrums can be used for molecules much as fingerprint can be used for humans?

Options :

1. ✗ NMR
2. ✗ UV visible



- 3. ✖ Mass
- 4. ✔ IR
- 5. ✖ Raman

Question Number : 36 Question Id : 696471186 Question Type : MCQ Display Question Number : Yes Single Line Question Option : No Option Orientation : Vertical

Correct : 2 Wrong : 1

Which of the following spectrums can be used for molecules much as fingerprint can be used for humans?

Options :

- 1. ✖ NMR
- 2. ✖ UV visible
- 3. ✖ Mass
- 4. ✔ IR
- 5. ✖ Raman

Question Number : 37 Question Id : 696471187 Question Type : MCQ Display Question Number : Yes Single Line Question Option : No Option Orientation : Vertical

Correct : 2 Wrong : 1

Which of the following is the Stretching wavenumbers range for N=O group?

Options :

- 1. ✖ 1200-1300 (Asymmetric) and 1100-1290 (Symmetric)
- 2. ✖ 1000-1400 (Asymmetric) and 1700-1790 (Symmetric)
- 3. ✔ 1500-1600 (Asymmetric) and 1300-1390 (Symmetric)
- 4. ✖ 1100-1900 (Asymmetric) and 1500-1490 (Symmetric)
- 5. ✖ 900-800 (Asymmetric) and 1100-900 (Symmetric)

Question Number : 37 Question Id : 696471187 Question Type : MCQ Display Question Number : Yes Single Line Question Option : No Option Orientation : Vertical

Correct : 2 Wrong : 1

Which of the following is the Stretching wavenumbers range for N=O group?

Options :

- 1. ✖ 1200-1300 (Asymmetric) and 1100-1290 (Symmetric)
- 2. ✖ 1000-1400 (Asymmetric) and 1700-1790 (Symmetric)
- 3. ✔ 1500-1600 (Asymmetric) and 1300-1390 (Symmetric)
- 4. ✖ 1100-1900 (Asymmetric) and 1500-1490 (Symmetric)
- 5. ✖ 900-800 (Asymmetric) and 1100-900 (Symmetric)

Question Number : 38 Question Id : 696471188 Question Type : MCQ Display Question Number : Yes Single Line Question Option : No Option Orientation : Vertical

Correct : 2 Wrong : 1

When two vibrational frequencies in a molecule couple to give rise to a vibration of a new frequency within the molecule, and when such a vibration is infrared active, it is called a _____.

Options :

1. ✗ Difference band
2. ✗ Hyperconjugation band
3. ✗ Valence band
4. ✗ Fermi band
5. ✓ Combination band

Question Number : 38 Question Id : 696471188 Question Type : MCQ Display Question Number : Yes Single Line Question Option : No Option Orientation : Vertical

Correct : 2 Wrong : 1

When two vibrational frequencies in a molecule couple to give rise to a vibration of a new frequency within the molecule, and when such a vibration is infrared active, it is called a _____.

Options :

1. ✗ Difference band
2. ✗ Hyperconjugation band
3. ✗ Valence band
4. ✗ Fermi band
5. ✓ Combination band

Question Number : 39 Question Id : 696471189 Question Type : MCQ Display Question Number : Yes Single Line Question Option : No Option Orientation : Vertical

Correct : 2 Wrong : 1

In Organic chemistry, which of the following two types of infrared spectrometers are in common use?

Options :

1. ✓ Dispersive and Fourier transform
2. ✗ Absorptive and Fourier transform
3. ✗ Adsorptive and absorptive
4. ✗ Refractive and Reflective
5. ✗ Reflective and Fourier Transform

Question Number : 39 Question Id : 696471189 Question Type : MCQ Display Question Number : Yes Single Line Question Option : No Option Orientation : Vertical

Correct : 2 Wrong : 1

In Organic chemistry, which of the following two types of infrared spectrometers are in common use?

Options :

1. ✓ Dispersive and Fourier transform
2. ✗ Absorptive and Fourier transform
3. ✗ Adsorptive and absorptive
4. ✗ Refractive and Reflective
5. ✗ Reflective and Fourier Transform

Question Number : 40 Question Id : 696471190 Question Type : MCQ Display Question Number : Yes Single Line Question Option : No Option Orientation : Vertical

Correct : 2 Wrong : 1

In IR spectrum, C=C appears as a weak absorption near _____.

Options :

1. ✗ 1350 cm^{-1}
2. ✗ 1450 cm^{-1}
3. ✗ 1550 cm^{-1}
4. ✓ 1650 cm^{-1}
5. ✗ 1660 cm^{-1}

Question Number : 40 Question Id : 696471190 Question Type : MCQ Display Question Number : Yes Single Line Question Option : No Option Orientation : Vertical

Correct : 2 Wrong : 1

In IR spectrum, C=C appears as a weak absorption near _____.

Options :

1. ✗ 1350 cm^{-1}
2. ✗ 1450 cm^{-1}
3. ✗ 1550 cm^{-1}
4. ✓ 1650 cm^{-1}
5. ✗ 1660 cm^{-1}

Question Number : 41 Question Id : 696471191 Question Type : MCQ Display Question Number : Yes Single Line Question Option : No Option Orientation : Vertical

Correct : 2 Wrong : 1

External double bonds give an _____ in absorption frequency with _____ ring size.

Options :

1. ✓ Increase; Decreasing
2. ✗ Decrease; Increasing
3. ✗ Increase; Increasing
4. ✗ Decrease; Decreasing
5. ✗ Decrease; twisting

Question Number : 41 Question Id : 696471191 Question Type : MCQ Display Question Number : Yes Single Line Question Option : No Option Orientation : Vertical

Correct : 2 Wrong : 1

External double bonds give an _____ in absorption frequency with _____ ring size.

Options :

1. ✓ Increase; Decreasing
2. ✗ Decrease; Increasing

- 3. ✖ Increase; Increasing
- 4. ✖ Decrease; Decreasing
- 5. ✖ Decrease; twisting

Question Number : 42 Question Id : 696471192 Question Type : MCQ Display Question Number : Yes Single Line Question Option : No Option Orientation : Vertical

Correct : 2 Wrong : 1

In the aromatic ring system, stretch for sp^2 C-H occurs at values greater than _____.

Options :

- 1. ✖ 1800 cm^{-1}
- 2. ✖ 2000 cm^{-1}
- 3. ✖ 2250 cm^{-1}
- 4. ✖ 2500 cm^{-1}
- 5. ✔ 3000 cm^{-1}

Question Number : 42 Question Id : 696471192 Question Type : MCQ Display Question Number : Yes Single Line Question Option : No Option Orientation : Vertical

Correct : 2 Wrong : 1

In the aromatic ring system, stretch for sp^2 C-H occurs at values greater than _____.

Options :

- 1. ✖ 1800 cm^{-1}
- 2. ✖ 2000 cm^{-1}
- 3. ✖ 2250 cm^{-1}
- 4. ✖ 2500 cm^{-1}
- 5. ✔ 3000 cm^{-1}

Question Number : 43 Question Id : 696471193 Question Type : MCQ Display Question Number : Yes Single Line Question Option : No Option Orientation : Vertical

Correct : 2 Wrong : 1

For any of the ortho disubstituted ring system, strong band near _____ is observed in its IR spectrum.

Options :

- 1. ✖ 475 cm^{-1}
- 2. ✖ 550 cm^{-1}
- 3. ✖ 650 cm^{-1}
- 4. ✖ 700 cm^{-1}
- 5. ✔ 750 cm^{-1}

Question Number : 43 Question Id : 696471193 Question Type : MCQ Display Question Number : Yes Single Line Question Option : No Option Orientation : Vertical

Correct : 2 Wrong : 1

For any of the ortho disubstituted ring system, strong band near _____ is observed in its IR spectrum.

Options :

1. ✗ 475 cm^{-1}
2. ✗ 550 cm^{-1}
3. ✗ 650 cm^{-1}
4. ✗ 700 cm^{-1}
5. ✓ 750 cm^{-1}

Question Number : 44 Question Id : 696471194 Question Type : MCQ Display Question Number : Yes Single Line Question Option : No Option Orientation : Vertical

Correct : 2 Wrong : 1

The O-H band in methyl salicylate is supposed to be 3350 cm^{-1} . However the actual band appeared is at around 3200 cm^{-1} , which is due to the _____.

Options :

1. ✗ C-H bending
2. ✗ Intermolecular H bonding
3. ✓ Intramolecular H bonding
4. ✗ Decreased frequency
5. ✗ Van der waals force of attraction

Question Number : 44 Question Id : 696471194 Question Type : MCQ Display Question Number : Yes Single Line Question Option : No Option Orientation : Vertical

Correct : 2 Wrong : 1

The O-H band in methyl salicylate is supposed to be 3350 cm^{-1} . However the actual band appeared is at around 3200 cm^{-1} , which is due to the _____.

Options :

1. ✗ C-H bending
2. ✗ Intermolecular H bonding
3. ✓ Intramolecular H bonding
4. ✗ Decreased frequency
5. ✗ Van der waals force of attraction

Question Number : 45 Question Id : 696471195 Question Type : MCQ Display Question Number : Yes Single Line Question Option : No Option Orientation : Vertical

Correct : 2 Wrong : 1

The C=O vibrations of 5-membered lactone is slightly higher than 6-membered lactone. This is because of the slightly _____ angle strain.

Options :

1. ✓ increased
2. ✗ decreased

- 3. ✖ twisted
- 4. ✖ deviated
- 5. ✖ revolution

Question Number : 45 Question Id : 696471195 Question Type : MCQ Display Question Number : Yes Single Line Question Option : No Option Orientation : Vertical

Correct : 2 Wrong : 1

The C=O vibrations of 5-membered lactone is slightly higher than 6-membered lactone. This is because of the slightly _____ angle strain.

Options :

- 1. ✔ increased
- 2. ✖ decreased
- 3. ✖ twisted
- 4. ✖ deviated
- 5. ✖ revolution

Question Number : 46 Question Id : 696471196 Question Type : MCQ Display Question Number : Yes Single Line Question Option : No Option Orientation : Vertical

Correct : 2 Wrong : 1

The C=O stretching of acetyl chloride is slightly higher than C=O stretching of Benzoyl chloride. This is because, _____.

Options :

- 1. ✖ less conjugation decreases frequency
- 2. ✔ more conjugation decreases frequency
- 3. ✖ Benzoyl chloride has an aromatic ring
- 4. ✖ Acetyl chloride has weaker bonding
- 5. ✖ Acetyl chloride is less stable as compared to benzoyl chloride

Question Number : 46 Question Id : 696471196 Question Type : MCQ Display Question Number : Yes Single Line Question Option : No Option Orientation : Vertical

Correct : 2 Wrong : 1

The C=O stretching of acetyl chloride is slightly higher than C=O stretching of Benzoyl chloride. This is because, _____.

Options :

- 1. ✖ less conjugation decreases frequency
- 2. ✔ more conjugation decreases frequency
- 3. ✖ Benzoyl chloride has an aromatic ring
- 4. ✖ Acetyl chloride has weaker bonding
- 5. ✖ Acetyl chloride is less stable as compared to benzoyl chloride

Question Number : 47 Question Id : 696471197 Question Type : MCQ Display Question Number : Yes Single Line Question Option : No Option Orientation : Vertical



Correct : 2 Wrong : 1

For a proton, if the applied magnetic field has a strength of approximately 1.41 Tesla, the difference in energy between the two spin states of the proton is about _____.

Options :

1. ✗ 0.239×10^{-5} KJ/mole
2. ✓ 2.39×10^{-5} KJ/mole
3. ✗ 23.9×10^{-5} KJ/mole
4. ✗ 8.35×10^{-5} KJ/mole
5. ✗ 6.35×10^{-5} KJ/mole

Question Number : 47 Question Id : 696471197 Question Type : MCQ Display Question Number : Yes Single Line Question Option : No Option Orientation : Vertical

Correct : 2 Wrong : 1

For a proton, if the applied magnetic field has a strength of approximately 1.41 Tesla, the difference in energy between the two spin states of the proton is about _____.

Options :

1. ✗ 0.239×10^{-5} KJ/mole
2. ✓ 2.39×10^{-5} KJ/mole
3. ✗ 23.9×10^{-5} KJ/mole
4. ✗ 8.35×10^{-5} KJ/mole
5. ✗ 6.35×10^{-5} KJ/mole

Question Number : 48 Question Id : 696471198 Question Type : MCQ Display Question Number : Yes Single Line Question Option : No Option Orientation : Vertical

Correct : 2 Wrong : 1

When the magnetic field is applied to a molecule, the nucleus begins to process about its own axis of spin with angular frequency, which is sometimes termed as:

Options :

1. ✗ Magnetic frequency
2. ✗ Vibrational frequency
3. ✓ Larmor frequency
4. ✗ Spinning frequency
5. ✗ Resonance

Question Number : 48 Question Id : 696471198 Question Type : MCQ Display Question Number : Yes Single Line Question Option : No Option Orientation : Vertical

Correct : 2 Wrong : 1

When the magnetic field is applied to a molecule, the nucleus begins to process about its own axis of spin with angular frequency, which is sometimes termed as:

Options :

1. ✗ Magnetic frequency



- 2. ✗ Vibrational frequency
- 3. ✓ Larmor frequency
- 4. ✗ Spinning frequency
- 5. ✗ Resonance

Question Number : 49 Question Id : 696471199 Question Type : MCQ Display Question Number : Yes Single Line Question Option : No Option Orientation : Vertical

Correct : 2 Wrong : 1

In NMR measurements, which of the following standard reference substances is used universally?

Options :

- 1. ✗ Trimethylsilane
- 2. ✓ Tetramethylsilane
- 3. ✗ Pentamethylsilane
- 4. ✗ Tetraethyllead
- 5. ✗ Heavy water

Question Number : 49 Question Id : 696471199 Question Type : MCQ Display Question Number : Yes Single Line Question Option : No Option Orientation : Vertical

Correct : 2 Wrong : 1

In NMR measurements, which of the following standard reference substances is used universally?

Options :

- 1. ✗ Trimethylsilane
- 2. ✓ Tetramethylsilane
- 3. ✗ Pentamethylsilane
- 4. ✗ Tetraethyllead
- 5. ✗ Heavy water

Question Number : 50 Question Id : 696471200 Question Type : MCQ Display Question Number : Yes Single Line Question Option : No Option Orientation : Vertical

Correct : 2 Wrong : 1

In NMR spectroscopy, the chemical shift value increases as the electronegativity of the attached element _____.

Options :

- 1. ✓ increases
- 2. ✗ decreases
- 3. ✗ slightly decreases
- 4. ✗ slightly increases
- 5. ✗ decreases rapidly

Question Number : 50 Question Id : 696471200 Question Type : MCQ Display Question Number : Yes Single Line Question Option : No Option Orientation : Vertical



Correct : 2 Wrong : 1

In NMR spectroscopy, the chemical shift value increases as the electronegativity of the attached element _____.

Options :

1. ✓ increases
2. ✗ decreases
3. ✗ slightly decreases
4. ✗ slightly increases
5. ✗ decreases rapidly

Question Number : 51 Question Id : 696471201 Question Type : MCQ Display Question Number : Yes Single Line Question Option : No Option Orientation : Vertical

Correct : 2 Wrong : 1

As a result of _____, each proton in a molecule is shielded from the applied magnetic field to an extent that depends on the electron density surrounding it.

Options :

1. ✗ Electronegativity
2. ✗ Electropositivity
3. ✗ Shielding
4. ✓ Diamagnetic anisotropy
5. ✗ Paramagnetic anisotropy

Question Number : 51 Question Id : 696471201 Question Type : MCQ Display Question Number : Yes Single Line Question Option : No Option Orientation : Vertical

Correct : 2 Wrong : 1

As a result of _____, each proton in a molecule is shielded from the applied magnetic field to an extent that depends on the electron density surrounding it.

Options :

1. ✗ Electronegativity
2. ✗ Electropositivity
3. ✗ Shielding
4. ✓ Diamagnetic anisotropy
5. ✗ Paramagnetic anisotropy

Question Number : 52 Question Id : 696471202 Question Type : MCQ Display Question Number : Yes Single Line Question Option : No Option Orientation : Vertical

Correct : 2 Wrong : 1

NMR instruments that vary the magnetic field in a continuous fashion, scanning from the downfield end to the upfield end of the spectrum, are called _____ instruments.

Options :

1. ✗ Fourier transform
2. ✗ Continuous

- 3. ✖ Continuous shielding
- 4. ✖ Continuous deshielding
- 5. ✔ Continuous wave

Question Number : 52 Question Id : 696471202 Question Type : MCQ Display Question Number : Yes Single Line Question Option : No Option Orientation : Vertical

Correct : 2 Wrong : 1

NMR instruments that vary the magnetic field in a continuous fashion, scanning from the downfield end to the upfield end of the spectrum, are called _____ instruments.

Options :

- 1. ✖ Fourier transform
- 2. ✖ Continuous
- 3. ✖ Continuous shielding
- 4. ✖ Continuous deshielding
- 5. ✔ Continuous wave

Question Number : 53 Question Id : 696471203 Question Type : MCQ Display Question Number : Yes Single Line Question Option : No Option Orientation : Vertical

Correct : 2 Wrong : 1

During NMR analysis, as the given molecule contain many different nuclei, many different frequencies of electromagnetic radiation are emitted simultaneously. This emission is termed as:

Options :

- 1. ✖ Continuous wave
- 2. ✖ Continuous signal
- 3. ✖ Resonance signal
- 4. ✖ Frequency domain signal
- 5. ✔ Free induction decay

Question Number : 53 Question Id : 696471203 Question Type : MCQ Display Question Number : Yes Single Line Question Option : No Option Orientation : Vertical

Correct : 2 Wrong : 1

During NMR analysis, as the given molecule contain many different nuclei, many different frequencies of electromagnetic radiation are emitted simultaneously. This emission is termed as:

Options :

- 1. ✖ Continuous wave
- 2. ✖ Continuous signal
- 3. ✖ Resonance signal
- 4. ✖ Frequency domain signal
- 5. ✔ Free induction decay

Question Number : 54 Question Id : 696471204 Question Type : MCQ Display Question Number : Yes Single Line Question Option : No Option Orientation : Vertical

Correct : 2 Wrong : 1

In Benzyl acetate, first integral rises for 55.5 divisions on the chart paper; the second 22.0 divisions; and the third 32.5 divisions. The relative ratios of the numbers are _____ respectively.

Options :

1. ✗ 25.8, 32.6, 15.5
2. ✗ 15.5, 32.6, 25.2
3. ✗ -12.5, 16.7, 32.6
4. ✗ 25.2, 10.0, 14.8
5. ✓ 2.52, 1.0, 1.48

Question Number : 54 Question Id : 696471204 Question Type : MCQ Display Question Number : Yes Single Line Question Option : No Option Orientation : Vertical

Correct : 2 Wrong : 1

In Benzyl acetate, first integral rises for 55.5 divisions on the chart paper; the second 22.0 divisions; and the third 32.5 divisions. The relative ratios of the numbers are _____ respectively.

Options :

1. ✗ 25.8, 32.6, 15.5
2. ✗ 15.5, 32.6, 25.2
3. ✗ -12.5, 16.7, 32.6
4. ✗ 25.2, 10.0, 14.8
5. ✓ 2.52, 1.0, 1.48

Question Number : 55 Question Id : 696471205 Question Type : MCQ Display Question Number : Yes Single Line Question Option : No Option Orientation : Vertical

Correct : 2 Wrong : 1

In 1, 1, 2-trichloroethane 'Two neighbors' give a _____, while 'One neighbour' give a _____.

Options :

1. ✗ Quartet; triplet
2. ✗ Triplet; quartet
3. ✗ Doublet; quartet
4. ✓ Triplet; doublet
5. ✗ Doublet; singlet

Question Number : 55 Question Id : 696471205 Question Type : MCQ Display Question Number : Yes Single Line Question Option : No Option Orientation : Vertical

Correct : 2 Wrong : 1

In 1, 1, 2-trichloroethane 'Two neighbors' give a _____, while 'One neighbour' give a _____.

Options :

1. ✗ Quartet; triplet
2. ✗ Triplet; quartet
3. ✗ Doublet; quartet

4. ✓ Triplet; doublet

5. ✗ Doublet; singlet

Question Number : 56 Question Id : 696471206 Question Type : MCQ Display Question Number : Yes Single Line Question Option : No Option Orientation : Vertical

Correct : 2 Wrong : 1

Proton NMR of Ethyl iodide shows that, methylene protons splits in to a _____, while the methyl group split in to a _____.

Options :

1. ✗ Singlet; doublet

2. ✗ Doublet; triplet

3. ✗ Triplet; quartet

4. ✓ Quartet; triplet

5. ✗ Triplet; doublet

Question Number : 56 Question Id : 696471206 Question Type : MCQ Display Question Number : Yes Single Line Question Option : No Option Orientation : Vertical

Correct : 2 Wrong : 1

Proton NMR of Ethyl iodide shows that, methylene protons splits in to a _____, while the methyl group split in to a _____.

Options :

1. ✗ Singlet; doublet

2. ✗ Doublet; triplet

3. ✗ Triplet; quartet

4. ✓ Quartet; triplet

5. ✗ Triplet; doublet

Question Number : 57 Question Id : 696471207 Question Type : MCQ Display Question Number : Yes Single Line Question Option : No Option Orientation : Vertical

Correct : 2 Wrong : 1

For 1-Bromo, 2-chloro ethane, possible splitting for the NMR peaks are _____.

Options :

1. ✗ Two doublets

2. ✗ One doublet & one triplet

3. ✓ Two triplets

4. ✗ One triplet & one quartet

5. ✗ Two quartets

Question Number : 57 Question Id : 696471207 Question Type : MCQ Display Question Number : Yes Single Line Question Option : No Option Orientation : Vertical

Correct : 2 Wrong : 1



For 1-Bromo, 2-chloro ethane, possible splitting for the NMR peaks are _____.

Options :

1. ✗ Two doublets
2. ✗ One doublet & one triplet
3. ✓ Two triplets
4. ✗ One triplet & one quartet
5. ✗ Two quartets

Question Number : 58 Question Id : 696471208 Question Type : MCQ Display Question Number : Yes Single Line Question Option : No Option Orientation : Vertical

Correct : 2 Wrong : 1

Which of the following is the approximate chemical shift value for protons of $\text{Cl-CH}_2\text{-Cl}$?
(By considering methane as 0.23 ppm).

Options :

1. ✗ 5.10 ppm
2. ✗ 5.20 ppm
3. ✓ 5.30 ppm
4. ✗ 5.40 ppm
5. ✗ 5.45 ppm

Question Number : 58 Question Id : 696471208 Question Type : MCQ Display Question Number : Yes Single Line Question Option : No Option Orientation : Vertical

Correct : 2 Wrong : 1

Which of the following is the approximate chemical shift value for protons of $\text{Cl-CH}_2\text{-Cl}$?
(By considering methane as 0.23 ppm).

Options :

1. ✗ 5.10 ppm
2. ✗ 5.20 ppm
3. ✓ 5.30 ppm
4. ✗ 5.40 ppm
5. ✗ 5.45 ppm

Question Number : 59 Question Id : 696471209 Question Type : MCQ Display Question Number : Yes Single Line Question Option : No Option Orientation : Vertical

Correct : 2 Wrong : 1

The approximate chemical shift value for protons of $\text{CH}_3\text{-CH}_2\text{-CH}_2\text{-NO}_2$ is _____ (by considering methane as 0.23 ppm).

Options :

1. ✗ 4.18 ppm
2. ✗ 4.28 ppm

- 3. ✓ 4.38 ppm
- 4. ✗ 4.48 ppm
- 5. ✗ 4.58 ppm

Question Number : 59 Question Id : 696471209 Question Type : MCQ Display Question Number : Yes Single Line Question Option : No Option Orientation : Vertical

Correct : 2 Wrong : 1

The approximate chemical shift value for protons of $\text{CH}_3\text{-CH}_2\text{-CH}_2\text{-NO}_2$ is _____ (by considering methane as 0.23 ppm).

Options :

- 1. ✗ 4.18 ppm
- 2. ✗ 4.28 ppm
- 3. ✓ 4.38 ppm
- 4. ✗ 4.48 ppm
- 5. ✗ 4.58 ppm

Question Number : 60 Question Id : 696471210 Question Type : MCQ Display Question Number : Yes Single Line Question Option : No Option Orientation : Vertical

Correct : 2 Wrong : 1

Methyl groups usually appears between _____ and are often recognizable as a _____ singlet, doublet or triplet even when overlapping other CH absorptions.

Options :

- 1. ✓ 0.7-1.3 ppm; tall
- 2. ✗ 1.1-1.6 ppm; tall
- 3. ✗ 1.5-1.8 ppm; broad
- 4. ✗ 0.4-0.7 ppm; tall
- 5. ✗ 1.5-1.9; dwarf

Question Number : 60 Question Id : 696471210 Question Type : MCQ Display Question Number : Yes Single Line Question Option : No Option Orientation : Vertical

Correct : 2 Wrong : 1

Methyl groups usually appears between _____ and are often recognizable as a _____ singlet, doublet or triplet even when overlapping other CH absorptions.

Options :

- 1. ✓ 0.7-1.3 ppm; tall
- 2. ✗ 1.1-1.6 ppm; tall
- 3. ✗ 1.5-1.8 ppm; broad
- 4. ✗ 0.4-0.7 ppm; tall
- 5. ✗ 1.5-1.9; dwarf

Question Number : 61 Question Id : 696471211 Question Type : MCQ Display Question Number : Yes Single Line Question Option : No Option Orientation : Vertical

Correct : 2 Wrong : 1

Good manufacturing practices of Pharmaceuticals (GMP) was enforced by the USFDA under the title _____.

Options :

1. ✗ USFDA guidelines
2. ✗ USFDA objectives
3. ✓ 21 CFR
4. ✗ Federation drug policy
5. ✗ US pharmacopoeia

Question Number : 61 Question Id : 696471211 Question Type : MCQ Display Question Number : Yes Single Line Question Option : No Option Orientation : Vertical

Correct : 2 Wrong : 1

Good manufacturing practices of Pharmaceuticals (GMP) was enforced by the USFDA under the title _____.

Options :

1. ✗ USFDA guidelines
2. ✗ USFDA objectives
3. ✓ 21 CFR
4. ✗ Federation drug policy
5. ✗ US pharmacopoeia

Question Number : 62 Question Id : 696471212 Question Type : MCQ Display Question Number : Yes Single Line Question Option : No Option Orientation : Vertical

Correct : 2 Wrong : 1

According to the Ayurvedic Pharmacopoeia of India, which of the following may have toxic or allergenic properties, rendering their presence in the botanical extract undesirable?

Options :

1. ✗ Active markers
2. ✗ Reactive markers
3. ✗ Pseudo markers
4. ✗ Positive markers
5. ✓ Negative markers

Question Number : 62 Question Id : 696471212 Question Type : MCQ Display Question Number : Yes Single Line Question Option : No Option Orientation : Vertical

Correct : 2 Wrong : 1

According to the Ayurvedic Pharmacopoeia of India, which of the following may have toxic or allergenic properties, rendering their presence in the botanical extract undesirable?

Options :

1. ✗ Active markers
2. ✗ Reactive markers
3. ✗ Pseudo markers



- 4. ✖ Positive markers
- 5. ✔ Negative markers

Question Number : 63 Question Id : 696471213 Question Type : MCQ Display Question Number : Yes Single Line Question Option : No Option Orientation : Vertical

Correct : 2 Wrong : 1

Monograph of an extract in the Ayurvedic pharmacopoeia is to provide _____ standards of quality for the extract for its use as a food item or a food supplement, dietary supplement/ nutraceutical, as a drug and/or as an ingredient in cosmetics.

Options :

- 1. ✔ Qualitative and quantitative
- 2. ✖ ISO 900
- 3. ✖ ISO 10,000
- 4. ✖ International
- 5. ✖ National

Question Number : 63 Question Id : 696471213 Question Type : MCQ Display Question Number : Yes Single Line Question Option : No Option Orientation : Vertical

Correct : 2 Wrong : 1

Monograph of an extract in the Ayurvedic pharmacopoeia is to provide _____ standards of quality for the extract for its use as a food item or a food supplement, dietary supplement/ nutraceutical, as a drug and/or as an ingredient in cosmetics.

Options :

- 1. ✔ Qualitative and quantitative
- 2. ✖ ISO 900
- 3. ✖ ISO 10,000
- 4. ✖ International
- 5. ✖ National

Question Number : 64 Question Id : 696471214 Question Type : MCQ Display Question Number : Yes Single Line Question Option : No Option Orientation : Vertical

Correct : 2 Wrong : 1

As per WHO guidelines on good agricultural and collection practices (GACP) for medicinal plants, there must be _____ lighting in work rooms.

Options :

- 1. ✖ 110 lux
- 2. ✔ 220 lux
- 3. ✖ 330 lux
- 4. ✖ 440 lux
- 5. ✖ 540 lux

Question Number : 64 Question Id : 696471214 Question Type : MCQ Display Question Number : Yes Single Line Question Option : No Option Orientation : Vertical

Correct : 2 Wrong : 1

As per WHO guidelines on good agricultural and collection practices (GACP) for medicinal plants, there must be _____ lighting in work rooms.

Options :

1. ✗ 110 lux
2. ✓ 220 lux
3. ✗ 330 lux
4. ✗ 440 lux
5. ✗ 540 lux

Question Number : 65 Question Id : 696471215 Question Type : MCQ Display Question Number : Yes Single Line Question Option : No Option Orientation : Vertical

Correct : 2 Wrong : 1

The Ayurvedic Pharmacopoeia of India, Part-1, Volume IX was released by Ministry of _____ Govt. of India during the year _____.

Options :

1. ✗ MHRD; 2015
2. ✓ Ayush; 2016
3. ✗ Health; 2016
4. ✗ Traditional medicines; 2016
5. ✗ Food processing; 2016

Question Number : 65 Question Id : 696471215 Question Type : MCQ Display Question Number : Yes Single Line Question Option : No Option Orientation : Vertical

Correct : 2 Wrong : 1

The Ayurvedic Pharmacopoeia of India, Part-1, Volume IX was released by Ministry of _____ Govt. of India during the year _____.

Options :

1. ✗ MHRD; 2015
2. ✓ Ayush; 2016
3. ✗ Health; 2016
4. ✗ Traditional medicines; 2016
5. ✗ Food processing; 2016

Question Number : 66 Question Id : 696471216 Question Type : MCQ Display Question Number : Yes Single Line Question Option : No Option Orientation : Vertical

Correct : 2 Wrong : 1

Which of the following can be regarded as an established method with application in GMP-compliant quality control of herbal drugs and preparations thereof?

Options :

1. ✗ TLC
2. ✗ GC
3. ✗ HPLC

4. ✓ HPTLC
5. ✗ Distillation

Question Number : 66 Question Id : 696471216 Question Type : MCQ Display Question Number : Yes Single Line Question Option : No Option Orientation : Vertical

Correct : 2 Wrong : 1

Which of the following can be regarded as an established method with application in GMP-compliant quality control of herbal drugs and preparations thereof?

Options :

1. ✗ TLC
2. ✗ GC
3. ✗ HPLC
4. ✓ HPTLC
5. ✗ Distillation

Question Number : 67 Question Id : 696471217 Question Type : MCQ Display Question Number : Yes Single Line Question Option : No Option Orientation : Vertical

Correct : 2 Wrong : 1

In any given Organic compound, the abundance of ^{13}C is about _____.

Options :

1. ✓ 1%
2. ✗ 5%
3. ✗ 12.5%
4. ✗ 15%
5. ✗ 15.9%

Question Number : 67 Question Id : 696471217 Question Type : MCQ Display Question Number : Yes Single Line Question Option : No Option Orientation : Vertical

Correct : 2 Wrong : 1

In any given Organic compound, the abundance of ^{13}C is about _____.

Options :

1. ✓ 1%
2. ✗ 5%
3. ✗ 12.5%
4. ✗ 15%
5. ✗ 15.9%

Question Number : 68 Question Id : 696471218 Question Type : MCQ Display Question Number : Yes Single Line Question Option : No Option Orientation : Vertical

Correct : 2 Wrong : 1

Change in the spin quantum number of an electron during the transition are not allowed to take place. They are termed as _____.

Options :

1. ✗ Vibrational bands

- 2. ✖ Forbidden bands
- 3. ✖ HOMO
- 4. ✖ LUMO
- 5. ✔ Forbidden transitions

Question Number : 68 Question Id : 696471218 Question Type : MCQ Display Question Number : Yes Single Line Question Option : No Option Orientation : Vertical

Correct : 2 Wrong : 1

Change in the spin quantum number of an electron during the transition are not allowed to take place. They are termed as _____.

Options :

- 1. ✖ Vibrational bands
- 2. ✖ Forbidden bands
- 3. ✖ HOMO
- 4. ✖ LUMO
- 5. ✔ Forbidden transitions

Question Number : 69 Question Id : 696471219 Question Type : MCQ Display Question Number : Yes Single Line Question Option : No Option Orientation : Vertical

Correct : 2 Wrong : 1

The relation between absorbance and optical density can be best explained by taking _____.

Options :

- 1. ✖ Selection rules
- 2. ✔ Beer-Lambert law
- 3. ✖ Beer's law
- 4. ✖ Lambert's law
- 5. ✖ HOMO-LUMO theory

Question Number : 69 Question Id : 696471219 Question Type : MCQ Display Question Number : Yes Single Line Question Option : No Option Orientation : Vertical

Correct : 2 Wrong : 1

The relation between absorbance and optical density can be best explained by taking _____.

Options :

- 1. ✖ Selection rules
- 2. ✔ Beer-Lambert law
- 3. ✖ Beer's law
- 4. ✖ Lambert's law
- 5. ✖ HOMO-LUMO theory

Question Number : 70 Question Id : 696471220 Question Type : MCQ Display Question Number : Yes Single Line Question Option : No Option Orientation : Vertical

Correct : 2 Wrong : 1

In UV-visible spectrum, alkenes absorb around _____.

Options :

1. ✖ 140 nm
2. ✔ 175 nm
3. ✖ 198 nm
4. ✖ 225 nm
5. ✖ 260 nm

Question Number : 70 Question Id : 696471220 Question Type : MCQ Display Question Number : Yes Single Line Question Option : No Option Orientation : Vertical

Correct : 2 Wrong : 1

In UV-visible spectrum, alkenes absorb around _____.

Options :

1. ✖ 140 nm
2. ✔ 175 nm
3. ✖ 198 nm
4. ✖ 225 nm
5. ✖ 260 nm

Question Number : 71 Question Id : 696471221 Question Type : MCQ Display Question Number : Yes Single Line Question Option : No Option Orientation : Vertical

Correct : 2 Wrong : 1

Alkaloids are any group of complex heterocyclic nitrogen compounds, which have strong physiological activity, are often toxic, and retain their own basic chemical properties. The above definition of alkaloids is according to _____.

Options :

1. ✖ Waller and Nowacki
2. ✖ Friedrich Sertürner
3. ✖ Medical scientists
4. ✖ Botanist
5. ✔ Chemistry

Question Number : 71 Question Id : 696471221 Question Type : MCQ Display Question Number : Yes Single Line Question Option : No Option Orientation : Vertical

Correct : 2 Wrong : 1

Alkaloids are any group of complex heterocyclic nitrogen compounds, which have strong physiological activity, are often toxic, and retain their own basic chemical properties. The above definition of alkaloids is according to _____.

Options :

1. ✖ Waller and Nowacki
2. ✖ Friedrich Sertürner
3. ✖ Medical scientists



4. ✖ Botanist
5. ✔ Chemistry

Question Number : 72 Question Id : 696471222 Question Type : MCQ Display Question Number : Yes Single Line Question Option : No Option Orientation : Vertical

Correct : 2 Wrong : 1

Alkaloids are most abundant in higher plants. At least _____ of higher plants contain these molecules.

Options :

1. ✖ 10%
2. ✔ 25%
3. ✖ 35%
4. ✖ 45%
5. ✖ 50%

Question Number : 72 Question Id : 696471222 Question Type : MCQ Display Question Number : Yes Single Line Question Option : No Option Orientation : Vertical

Correct : 2 Wrong : 1

Alkaloids are most abundant in higher plants. At least _____ of higher plants contain these molecules.

Options :

1. ✖ 10%
2. ✔ 25%
3. ✖ 35%
4. ✖ 45%
5. ✖ 50%

Question Number : 73 Question Id : 696471223 Question Type : MCQ Display Question Number : Yes Single Line Question Option : No Option Orientation : Vertical

Correct : 2 Wrong : 1

Quinine alkaloid is found particularly in the genus _____ from the botanical family _____.

Options :

1. ✖ Cinchonidine; Apocynaceae
2. ✖ Quinidine; Rubiaceae
3. ✖ Cinchonine; Myrtaceae
4. ✖ Cinchonine; Apocynaceae
5. ✔ Cinchona; Rubiaceae

Question Number : 73 Question Id : 696471223 Question Type : MCQ Display Question Number : Yes Single Line Question Option : No Option Orientation : Vertical

Correct : 2 Wrong : 1

Quinine alkaloid is found particularly in the genus _____ from the botanical family _____.

Options :

1. ✖ Cinchonidine; Apocynaceae

2. ✖ Quinidine; Rubiaceae
3. ✖ Cinchonine; Myrtaceae
4. ✖ Cinchonine; Apocynaceae
5. ✔ Cinchona; Rubiaceae

Question Number : 74 Question Id : 696471224 Question Type : MCQ Display Question Number : Yes Single Line Question Option : No Option Orientation : Vertical

Correct : 2 Wrong : 1

Nicotine is _____ having _____ forms.

Options :

1. ✔ Optically active; two enantiomers
2. ✖ Optically inactive; two enantiomers
3. ✖ Optically active; four enantiomers
4. ✖ Optically inactive; three enantiomers
5. ✖ Racemic mixture; two enantiomers

Question Number : 74 Question Id : 696471224 Question Type : MCQ Display Question Number : Yes Single Line Question Option : No Option Orientation : Vertical

Correct : 2 Wrong : 1

Nicotine is _____ having _____ forms.

Options :

1. ✔ Optically active; two enantiomers
2. ✖ Optically inactive; two enantiomers
3. ✖ Optically active; four enantiomers
4. ✖ Optically inactive; three enantiomers
5. ✖ Racemic mixture; two enantiomers

Question Number : 75 Question Id : 696471225 Question Type : MCQ Display Question Number : Yes Single Line Question Option : No Option Orientation : Vertical

Correct : 2 Wrong : 1

The biosynthetic pathway of nicotine involves a coupling reaction between the two cyclic structures that compose nicotine. Metabolic studies show that the _____ ring of nicotine is derived from nicotinic acid while the _____ is derived from *N*-methyl- Δ^1 -pyrrolidinium cation.

Options :

1. ✖ Pyrazole; pyridine
2. ✖ Pyrimidine; pyridine
3. ✔ Pyridine; pyrrolidone
4. ✖ Pyrrolidone; pyrimidine
5. ✖ Benzene; thiophene



Question Number : 75 Question Id : 696471225 Question Type : MCQ Display Question Number : Yes Single Line Question Option : No Option Orientation : Vertical

Correct : 2 Wrong : 1

The biosynthetic pathway of nicotine involves a coupling reaction between the two cyclic structures that compose nicotine. Metabolic studies show that the _____ ring of nicotine is derived from nicotinic acid while the _____ is derived from *N*-methyl- Δ^1 -pyrrolidinium cation.

Options :

1. ✗ Pyrazole; pyridine
2. ✗ Pyrimidine; pyridine
3. ✓ Pyridine; pyrrolidone
4. ✗ Pyrrolidone; pyrimidine
5. ✗ Benzene; thiophene

Question Number : 76 Question Id : 696471226 Question Type : MCQ Display Question Number : Yes Single Line Question Option : No Option Orientation : Vertical

Correct : 2 Wrong : 1

The most popular method for reducing ephedrine to methamphetamine is similar to the _____, in that it uses _____.

Options :

1. ✗ Wolf Kishner reduction; hydrazine hydrate
2. ✗ Clemmensen reduction; zinc & Conc HCl
3. ✗ Hydrogenation; hydrogen & metal catalyst
4. ✓ Birch reduction; liquid ammonia & lithium
5. ✗ Dissolving metal reduction; sodium in HCl

Question Number : 76 Question Id : 696471226 Question Type : MCQ Display Question Number : Yes Single Line Question Option : No Option Orientation : Vertical

Correct : 2 Wrong : 1

The most popular method for reducing ephedrine to methamphetamine is similar to the _____, in that it uses _____.

Options :

1. ✗ Wolf Kishner reduction; hydrazine hydrate
2. ✗ Clemmensen reduction; zinc & Conc HCl
3. ✗ Hydrogenation; hydrogen & metal catalyst
4. ✓ Birch reduction; liquid ammonia & lithium
5. ✗ Dissolving metal reduction; sodium in HCl

Question Number : 77 Question Id : 696471227 Question Type : MCQ Display Question Number : Yes Single Line Question Option : No Option Orientation : Vertical

Correct : 2 Wrong : 1



Ephedrine exhibits optical isomerism and has _____ chiral centres, giving rise to _____ stereoisomers.

Options :

1. ✗ one; two
2. ✓ two; four
3. ✗ three; nine
4. ✗ three; six
5. ✗ four; sixteen

Question Number : 77 Question Id : 696471227 Question Type : MCQ Display Question Number : Yes Single Line Question Option : No Option Orientation : Vertical

Correct : 2 Wrong : 1

Ephedrine exhibits optical isomerism and has _____ chiral centres, giving rise to _____ stereoisomers.

Options :

1. ✗ one; two
2. ✓ two; four
3. ✗ three; nine
4. ✗ three; six
5. ✗ four; sixteen

Question Number : 78 Question Id : 696471228 Question Type : MCQ Display Question Number : Yes Single Line Question Option : No Option Orientation : Vertical

Correct : 2 Wrong : 1

Ephedrine increases blood pressure and acts as _____.

Options :

1. ✗ Vasodilators
2. ✓ Bronchodilators
3. ✗ Blood capillary dilators
4. ✗ Antidepressant
5. ✗ Anticoagulant

Question Number : 78 Question Id : 696471228 Question Type : MCQ Display Question Number : Yes Single Line Question Option : No Option Orientation : Vertical

Correct : 2 Wrong : 1

Ephedrine increases blood pressure and acts as _____.

Options :

1. ✗ Vasodilators
2. ✓ Bronchodilators
3. ✗ Blood capillary dilators



4. ✖ Antidepressant

5. ✖ Anticoagulant

Question Number : 79 Question Id : 696471229 Question Type : MCQ Display Question Number : Yes Single Line Question Option : No Option Orientation : Vertical

Correct : 2 Wrong : 1

Morphine is a _____ type alkaloid and frequently used for pain from _____.

Options :

1. ✖ Nicotinate; heart

2. ✖ Pyrazole; labor

3. ✖ Isonicotine; lungs

4. ✖ Nicotinate; lungs

5. ✔ Opiate; myocardial infarction

Question Number : 79 Question Id : 696471229 Question Type : MCQ Display Question Number : Yes Single Line Question Option : No Option Orientation : Vertical

Correct : 2 Wrong : 1

Morphine is a _____ type alkaloid and frequently used for pain from _____.

Options :

1. ✖ Nicotinate; heart

2. ✖ Pyrazole; labor

3. ✖ Isonicotine; lungs

4. ✖ Nicotinate; lungs

5. ✔ Opiate; myocardial infarction

Question Number : 80 Question Id : 696471230 Question Type : MCQ Display Question Number : Yes Single Line Question Option : No Option Orientation : Vertical

Correct : 2 Wrong : 1

An important consideration in mass spectrometry is resolution, which is defined according to the relationship:

Options :

1. ✖

$R = (M+1)/\delta M$ where, M is mass of particle & δM is difference in mass between a particle of mass M & the particle of next higher mass that can be resolved by the instrument.

2. ✖

$R = (M+2)/\delta M$ where, M is mass of particle & δM is difference in mass between a particle of mass M & the particle of next higher mass that can be resolved by the instrument.

3. ✔

$R = M/\delta M$ where, M is mass of particle & δM is difference in mass between a particle of mass M & the particle of next higher mass that can be resolved by the instrument.

4. ✖

$R = (\delta M+1)/M$ where, M is mass of particle & δM is difference in mass between a particle of mass M & the particle of next higher mass that can be resolved by the instrument.



5. ✖

$R = \delta M / M$ where, M is mass of particle & δM is difference in mass between a particle of mass M & the particle of next higher mass that can be resolved by the instrument.

Question Number : 80 Question Id : 696471230 Question Type : MCQ Display Question Number : Yes Single Line Question Option : No Option Orientation : Vertical

Correct : 2 Wrong : 1

An important consideration in mass spectrometry is resolution, which is defined according to the relationship:

Options :

1. ✖

$R = (M+1) / \delta M$ where, M is mass of particle & δM is difference in mass between a particle of mass M & the particle of next higher mass that can be resolved by the instrument.

2. ✖

$R = (M+2) / \delta M$ where, M is mass of particle & δM is difference in mass between a particle of mass M & the particle of next higher mass that can be resolved by the instrument.

3. ✔

$R = M / \delta M$ where, M is mass of particle & δM is difference in mass between a particle of mass M & the particle of next higher mass that can be resolved by the instrument.

4. ✖

$R = (\delta M + 1) / M$ where, M is mass of particle & δM is difference in mass between a particle of mass M & the particle of next higher mass that can be resolved by the instrument.

5. ✖

$R = \delta M / M$ where, M is mass of particle & δM is difference in mass between a particle of mass M & the particle of next higher mass that can be resolved by the instrument.

Question Number : 81 Question Id : 696471231 Question Type : MCQ Display Question Number : Yes Single Line Question Option : No Option Orientation : Vertical

Correct : 2 Wrong : 1

The effect of hydrogen bond interaction on vibrational frequency of I.R spectra is:

Options :

1. ✖ Does not affect the wave length

2. ✖ Increase in the wave number

3. ✔ Decrease in the wave number

4. ✖ Decrease in the wave length

5. ✖ Increase in the wave length

Question Number : 81 Question Id : 696471231 Question Type : MCQ Display Question Number : Yes Single Line Question Option : No Option Orientation : Vertical

Correct : 2 Wrong : 1

The effect of hydrogen bond interaction on vibrational frequency of I.R spectra is:

Options :

1. ✖ Does not affect the wave length

2. ✖ Increase in the wave number

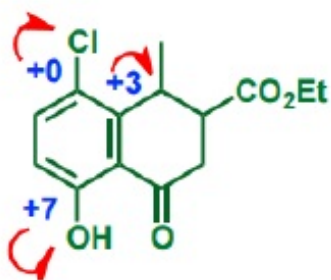
3. ✔ Decrease in the wave number

4. ✖ Decrease in the wave length

5. ✖ Increase in the wave length

Question Number : 82 Question Id : 696471232 Question Type : MCQ Display Question Number : Yes Single Line Question Option : No Option Orientation : Vertical

Correct : 2 Wrong : 1



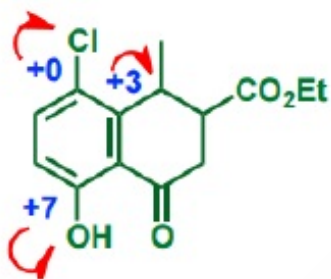
Calculate the λ_{\max} of above compound.

Options :

1. ✓ 256 nm
2. ✗ 253 nm
3. ✗ 249 nm
4. ✗ 239 nm
5. ✗ 226 nm

Question Number : 82 Question Id : 696471232 Question Type : MCQ Display Question Number : Yes Single Line Question Option : No Option Orientation : Vertical

Correct : 2 Wrong : 1



Calculate the λ_{\max} of above compound.

Options :

1. ✓ 256 nm
2. ✗ 253 nm
3. ✗ 249 nm
4. ✗ 239 nm
5. ✗ 226 nm

Question Number : 83 Question Id : 696471233 Question Type : MCQ Display Question Number : Yes Single Line Question Option : No Option Orientation : Vertical

Correct : 2 Wrong : 1

Which of the following factors does NOT influence the chemical shift of the compound?

Options :

1. ✗ Hydrogen bonding
2. ✗ Anisotropic effect



- 3. ✖ Inductive effect
- 4. ✖ Concentration
- 5. ✔ Solvent

Question Number : 83 Question Id : 696471233 Question Type : MCQ Display Question Number : Yes Single Line Question Option : No Option Orientation : Vertical

Correct : 2 Wrong : 1

Which of the following factors does NOT influence the chemical shift of the compound?

Options :

- 1. ✖ Hydrogen bonding
- 2. ✖ Anisotropic effect
- 3. ✖ Inductive effect
- 4. ✖ Concentration
- 5. ✔ Solvent

Question Number : 84 Question Id : 696471234 Question Type : MCQ Display Question Number : Yes Single Line Question Option : No Option Orientation : Vertical

Correct : 2 Wrong : 1

In Infrared spectroscopy, cells with a minimum optical path of a few centimeters are used for _____.

Options :

- 1. ✔ Gas analysis
- 2. ✖ Liquid analysis
- 3. ✖ Solid analysis
- 4. ✖ Bio sample analysis
- 5. ✖ Biofluid analysis

Question Number : 84 Question Id : 696471234 Question Type : MCQ Display Question Number : Yes Single Line Question Option : No Option Orientation : Vertical

Correct : 2 Wrong : 1

In Infrared spectroscopy, cells with a minimum optical path of a few centimeters are used for _____.

Options :

- 1. ✔ Gas analysis
- 2. ✖ Liquid analysis
- 3. ✖ Solid analysis
- 4. ✖ Bio sample analysis
- 5. ✖ Biofluid analysis

Question Number : 85 Question Id : 696471235 Question Type : MCQ Display Question Number : Yes Single Line Question Option : No Option Orientation : Vertical

Correct : 2 Wrong : 1



A 1.0% (wt/vol) solution of hexanol has an IR absorbance of 0.37 at 3660 cm^{-1} in a 1.0 mm cell. Calculate its molar absorptivity at this wave number.

Options :

1. ✗ $2.64\text{ mol}^{-1}\text{ mm}^{-1}$
2. ✗ $2.86\text{ mol}^{-1}\text{ mm}^{-1}$
3. ✗ $3.01\text{ mol}^{-1}\text{ mm}^{-1}$
4. ✗ $1.25\text{ mol}^{-1}\text{ mm}^{-1}$
5. ✓ $3.41\text{ mol}^{-1}\text{ mm}^{-1}$

Question Number : 85 Question Id : 696471235 Question Type : MCQ Display Question Number : Yes Single Line Question Option : No Option Orientation : Vertical

Correct : 2 Wrong : 1

A 1.0% (wt/vol) solution of hexanol has an IR absorbance of 0.37 at 3660 cm^{-1} in a 1.0 mm cell. Calculate its molar absorptivity at this wave number.

Options :

1. ✗ $2.64\text{ mol}^{-1}\text{ mm}^{-1}$
2. ✗ $2.86\text{ mol}^{-1}\text{ mm}^{-1}$
3. ✗ $3.01\text{ mol}^{-1}\text{ mm}^{-1}$
4. ✗ $1.25\text{ mol}^{-1}\text{ mm}^{-1}$
5. ✓ $3.41\text{ mol}^{-1}\text{ mm}^{-1}$

Question Number : 86 Question Id : 696471236 Question Type : MCQ Display Question Number : Yes Single Line Question Option : No Option Orientation : Vertical

Correct : 2 Wrong : 1

Identify the compound 'X' having the ^{13}C signals at δ 71.9 and 59.0 ppm in CDCl_3 . The ^1H NMR spectrum showed the signals at δ 3.55 and 3.39 ppm (relative integrals 3:2).

Options :

1. ✗ $\text{CH}_3\text{CH}_2\text{OCH}_2\text{OCH}_2\text{CH}_3$
2. ✗ $\text{CH}_3\text{CH}_2\text{OCH}_2\text{CH}_3$
3. ✗ $\text{CH}_3\text{OCH}_2\text{OCH}_3$
4. ✓ $\text{CH}_3\text{OCH}_2\text{CH}_2\text{OCH}_3$
5. ✗ $\text{CH}_3\text{OCH}_2\text{CH}_2\text{CH}_2\text{OCH}_3$

Question Number : 86 Question Id : 696471236 Question Type : MCQ Display Question Number : Yes Single Line Question Option : No Option Orientation : Vertical

Correct : 2 Wrong : 1

Identify the compound 'X' having the ^{13}C signals at δ 71.9 and 59.0 ppm in CDCl_3 . The ^1H NMR spectrum showed the signals at δ 3.55 and 3.39 ppm (relative integrals 3:2).

Options :

1. ✗ $\text{CH}_3\text{CH}_2\text{OCH}_2\text{OCH}_2\text{CH}_3$
2. ✗ $\text{CH}_3\text{CH}_2\text{OCH}_2\text{CH}_3$
3. ✗ $\text{CH}_3\text{OCH}_2\text{OCH}_3$
4. ✓ $\text{CH}_3\text{OCH}_2\text{CH}_2\text{OCH}_3$
5. ✗ $\text{CH}_3\text{OCH}_2\text{CH}_2\text{CH}_2\text{OCH}_3$

Question Number : 87 Question Id : 696471237 Question Type : MCQ Display Question Number : Yes Single Line Question Option : No Option Orientation : Vertical

Correct : 2 Wrong : 1

The organic compound 'X' comprising of 10.21% of hydrogen and 69.52% of carbon. The ^1H NMR spectrum (recorded in CDCl_3), two triplets (δ 2.34, 1.08 ppm) and a sextet (δ 1.70 ppm) are observed. The FT-IR spectrum showed the peak at 2250 cm^{-1} . Compound X is:

Options :

1. ✗ $\text{CH}_3\text{CH}_2\text{CH}_2\text{CHO}$
2. ✗ $(\text{CH}_3)_2\text{CHCN}$
3. ✓ $\text{CH}_3\text{CH}_2\text{CH}_2\text{CN}$
4. ✗ $\text{CH}_3\text{CH}_2\text{CH}_2\text{NH}_2$
5. ✗ $\text{CH}_3\text{CH}_2\text{CH}_2\text{OH}$

Question Number : 87 Question Id : 696471237 Question Type : MCQ Display Question Number : Yes Single Line Question Option : No Option Orientation : Vertical

Correct : 2 Wrong : 1

The organic compound 'X' comprising of 10.21% of hydrogen and 69.52% of carbon. The ^1H NMR spectrum (recorded in CDCl_3), two triplets (δ 2.34, 1.08 ppm) and a sextet (δ 1.70 ppm) are observed. The FT-IR spectrum showed the peak at 2250 cm^{-1} . Compound X is:

Options :

1. ✗ $\text{CH}_3\text{CH}_2\text{CH}_2\text{CHO}$
2. ✗ $(\text{CH}_3)_2\text{CHCN}$
3. ✓ $\text{CH}_3\text{CH}_2\text{CH}_2\text{CN}$
4. ✗ $\text{CH}_3\text{CH}_2\text{CH}_2\text{NH}_2$
5. ✗ $\text{CH}_3\text{CH}_2\text{CH}_2\text{OH}$

Question Number : 88 Question Id : 696471238 Question Type : MCQ Display Question Number : Yes Single Line Question Option : No Option Orientation : Vertical

Correct : 2 Wrong : 1

If a proton is coupled with N, other equivalent protons in the multiplet is N+1. The relative intensities of these multiplets are determined by:

Options :

1. ✗ Cram's rule
2. ✓ Pascal's triangle



- 3. ✖ Chemical shift
- 4. ✖ Bredt's rule
- 5. ✖ Stevenson's rule

Question Number : 88 Question Id : 696471238 Question Type : MCQ Display Question Number : Yes Single Line Question Option : No Option Orientation : Vertical

Correct : 2 Wrong : 1

If a proton is coupled with N, other equivalent protons in the multiplet is N+1. The relative intensities of these multiplets are determined by:

Options :

- 1. ✖ Cram's rule
- 2. ✔ Pascal's triangle
- 3. ✖ Chemical shift
- 4. ✖ Bredt's rule
- 5. ✖ Stevenson's rule

Question Number : 89 Question Id : 696471239 Question Type : MCQ Display Question Number : Yes Single Line Question Option : No Option Orientation : Vertical

Correct : 2 Wrong : 1

A sample is injected onto a given column and mobile phase is unchanged throughout the time required for sample components to elute from the column is known as:

Options :

- 1. ✖ Gradient elution
- 2. ✖ Solvent programming
- 3. ✖ Mobile phase elution
- 4. ✔ Isocratic elution
- 5. ✖ Non gradient flow

Question Number : 89 Question Id : 696471239 Question Type : MCQ Display Question Number : Yes Single Line Question Option : No Option Orientation : Vertical

Correct : 2 Wrong : 1

A sample is injected onto a given column and mobile phase is unchanged throughout the time required for sample components to elute from the column is known as:

Options :

- 1. ✖ Gradient elution
- 2. ✖ Solvent programming
- 3. ✖ Mobile phase elution
- 4. ✔ Isocratic elution
- 5. ✖ Non gradient flow

Question Number : 90 Question Id : 696471240 Question Type : MCQ Display Question Number : Yes Single Line Question Option : No Option Orientation : Vertical

Correct : 2 Wrong : 1

Identify the equation related to the column chromatography.

Options :

1. ✖ $id = 708 nCD^{1/2} m^{2/3} t^{1/6}$
2. ✔ $V_R = t_R F_c$
3. ✖ $E = E_0 - RT \log [H^+]/n F$
4. ✖ $A = \epsilon bc$
5. ✖ $\alpha = \frac{K_1}{K_2}$

Question Number : 90 Question Id : 696471240 Question Type : MCQ Display Question Number : Yes Single Line Question Option : No Option Orientation : Vertical

Correct : 2 Wrong : 1

Identify the equation related to the column chromatography.

Options :

1. ✖ $id = 708 nCD^{1/2} m^{2/3} t^{1/6}$
2. ✔ $V_R = t_R F_c$
3. ✖ $E = E_0 - RT \log [H^+]/n F$
4. ✖ $A = \epsilon bc$
5. ✖ $\alpha = \frac{K_1}{K_2}$

Question Number : 91 Question Id : 696471241 Question Type : MCQ Display Question Number : Yes Single Line Question Option : No Option Orientation : Vertical

Correct : 2 Wrong : 1

The Flame ionization detector is the extensively used detector due to its:

Options :

1. ✖ Short range of linearity
2. ✖ Low reliability
3. ✖ Universal response
4. ✔ High sensitivity
5. ✖ Wide range detection

Question Number : 91 Question Id : 696471241 Question Type : MCQ Display Question Number : Yes Single Line Question Option : No Option Orientation : Vertical

Correct : 2 Wrong : 1

The Flame ionization detector is the extensively used detector due to its:

Options :

1. ✖ Short range of linearity
2. ✖ Low reliability

- 3. ✖ Universal response
- 4. ✔ High sensitivity
- 5. ✖ Wide range detection

Question Number : 92 Question Id : 696471242 Question Type : MCQ Display Question Number : Yes Single Line Question Option : No Option Orientation : Vertical

Correct : 2 Wrong : 1

The separation mechanism involved in liquid-liquid chromatography is:

Options :

- 1. ✖ Adsorption
- 2. ✔ Partition
- 3. ✖ Absorption
- 4. ✖ Sorption
- 5. ✖ Force flow

Question Number : 92 Question Id : 696471242 Question Type : MCQ Display Question Number : Yes Single Line Question Option : No Option Orientation : Vertical

Correct : 2 Wrong : 1

The separation mechanism involved in liquid-liquid chromatography is:

Options :

- 1. ✖ Adsorption
- 2. ✔ Partition
- 3. ✖ Absorption
- 4. ✖ Sorption
- 5. ✖ Force flow

Question Number : 93 Question Id : 696471243 Question Type : MCQ Display Question Number : Yes Single Line Question Option : No Option Orientation : Vertical

Correct : 2 Wrong : 1

In chromatography, which of the following statements is true?

Options :

- 1. ✖ Resolution is inverse proportional to the number of theoretical plates in a column.
- 2. ✖ Resolution is proportional to the number of theoretical plates in a column.
- 3. ✖ Resolution is proportional to the square of the number of theoretical plates in a column.
- 4. ✖ Resolution is inverse proportional to the square root of the number of theoretical plates in a column.
- 5. ✔ Resolution is proportional to the square root of the number of theoretical plates in a column.

Question Number : 93 Question Id : 696471243 Question Type : MCQ Display Question Number : Yes Single Line Question Option : No Option Orientation : Vertical

Correct : 2 Wrong : 1



In chromatography, which of the following statements is true?

Options :

1. ✖ Resolution is inverse proportional to the number of theoretical plates in a column.
2. ✖ Resolution is proportional to the number of theoretical plates in a column.
3. ✖ Resolution is proportional to the square of the number of theoretical plates in a column.
4. ✖ Resolution is inverse proportional to the square root of the number of theoretical plates in a column.
5. ✔ Resolution is proportional to the square root of the number of theoretical plates in a column.

Question Number : 94 Question Id : 696471244 Question Type : MCQ Display Question Number : Yes Single Line Question Option : No Option Orientation : Vertical

Correct : 2 Wrong : 1

The chromatographic mode used in chiral separation techniques is:

Options :

1. ✔ Reversed phase mode, inclusion and complexing
2. ✖ Normal phase mode, inclusion and complexing
3. ✖ Adsorption mode
4. ✖ Partition mode, inclusion and complexing
5. ✖ Sorption mode

Question Number : 94 Question Id : 696471244 Question Type : MCQ Display Question Number : Yes Single Line Question Option : No Option Orientation : Vertical

Correct : 2 Wrong : 1

The chromatographic mode used in chiral separation techniques is:

Options :

1. ✔ Reversed phase mode, inclusion and complexing
2. ✖ Normal phase mode, inclusion and complexing
3. ✖ Adsorption mode
4. ✖ Partition mode, inclusion and complexing
5. ✖ Sorption mode

Question Number : 95 Question Id : 696471245 Question Type : MCQ Display Question Number : Yes Single Line Question Option : No Option Orientation : Vertical

Correct : 2 Wrong : 1

The dynamic Thermogravimetric is the process where:

Options :

1. ✖ Sample weight recorded as function of time at constant temperature
2. ✖ Sample heated to constant weight with series increase in weight
3. ✔ Sample heated in which temperature is changing in a predetermined manner, normally at liner rate

- 4. ✖ Sample heated in non-exponential manner
- 5. ✖ Sample heated to as function in non-liner rate

Question Number : 95 Question Id : 696471245 Question Type : MCQ Display Question Number : Yes Single Line Question Option : No Option Orientation : Vertical

Correct : 2 Wrong : 1

The dynamic Thermogravimetric is the process where:

Options :

- 1. ✖ Sample weight recorded as function of time at constant temperature
- 2. ✖ Sample heated to constant weight with series increase in weight
- 3. ✔ Sample heated in which temperature is changing in a predetermined manner, normally at liner rate
- 4. ✖ Sample heated in non-exponential manner
- 5. ✖ Sample heated to as function in non-liner rate

Question Number : 96 Question Id : 696471246 Question Type : MCQ Display Question Number : Yes Single Line Question Option : No Option Orientation : Vertical

Correct : 2 Wrong : 1

In the 400 mHz HNMR spectrum, an unknown organic compound exhibited a doublet. The two lines of the doublet are at δ 2.36 and 2.40 ppm. What will be the value of the coupling constant (J)?

Options :

- 1. ✖ 24 Hz
- 2. ✖ 20 Hz
- 3. ✔ 16 Hz
- 4. ✖ 14 Hz
- 5. ✖ 8 Hz

Question Number : 96 Question Id : 696471246 Question Type : MCQ Display Question Number : Yes Single Line Question Option : No Option Orientation : Vertical

Correct : 2 Wrong : 1

In the 400 mHz HNMR spectrum, an unknown organic compound exhibited a doublet. The two lines of the doublet are at δ 2.36 and 2.40 ppm. What will be the value of the coupling constant (J)?

Options :

- 1. ✖ 24 Hz
- 2. ✖ 20 Hz
- 3. ✔ 16 Hz
- 4. ✖ 14 Hz
- 5. ✖ 8 Hz

Question Number : 97 Question Id : 696471247 Question Type : MCQ Display Question Number : Yes Single Line Question Option : No Option Orientation : Vertical

Correct : 2 Wrong : 1

Which of the following statements is incorrect regarding the DTA and DSC?

Options :

1. ✖ The sample size of DTA is about 20-50 mg and for DSC sample is about 2-10 mg.
2. ✖
- The sensitivity of heat transition measurement is 0.5 kJ/mol for DTA and a few joule for DSC.
3. ✖ DTA has programmed heating and DSC having the programmed heating and cooling cycles.
4. ✔ The specific heat measurement is accurate in DTA and not accurate in DSC.
5. ✖ The second order phase could be observed in DSC not in DTA.

Question Number : 97 Question Id : 696471247 Question Type : MCQ Display Question Number : Yes Single Line Question Option : No Option Orientation : Vertical

Correct : 2 Wrong : 1

Which of the following statements is incorrect regarding the DTA and DSC?

Options :

1. ✖ The sample size of DTA is about 20-50 mg and for DSC sample is about 2-10 mg.
2. ✖
- The sensitivity of heat transition measurement is 0.5 kJ/mol for DTA and a few joule for DSC.
3. ✖ DTA has programmed heating and DSC having the programmed heating and cooling cycles.
4. ✔ The specific heat measurement is accurate in DTA and not accurate in DSC.
5. ✖ The second order phase could be observed in DSC not in DTA.

Question Number : 98 Question Id : 696471248 Question Type : MCQ Display Question Number : Yes Single Line Question Option : No Option Orientation : Vertical

Correct : 2 Wrong : 1

The Thermometric titration is feasible only when _____.

Options :

1. ✖ the change in entropy is high at the beginning
2. ✖ the change in entropy is significant at the end point
3. ✖ significant change in both entropy and enthalpy change at the end point
4. ✔ the change in enthalpy is significant at the end point
5. ✖ does not depend on enthalpy and entropy at the end point

Question Number : 98 Question Id : 696471248 Question Type : MCQ Display Question Number : Yes Single Line Question Option : No Option Orientation : Vertical

Correct : 2 Wrong : 1

The Thermometric titration is feasible only when _____.

Options :

1. ✖ the change in entropy is high at the beginning
2. ✖ the change in entropy is significant at the end point
3. ✖ significant change in both entropy and enthalpy change at the end point
4. ✔ the change in enthalpy is significant at the end point



5. ✖ does not depend on enthalpy and entropy at the end point

Question Number : 99 Question Id : 696471249 Question Type : MCQ Display Question Number : Yes Single Line Question Option : No Option Orientation : Vertical

Correct : 2 Wrong : 1

In reverse phase HPLC, mobile phase and stationary phase comprises of:

Options :

1. ✖ polar stationary and non-polar mobile phase
2. ✔ stationary phase is nonpolar and mobile phase is polar
3. ✖ polar stationary and polar mobile phase
4. ✖ non-polar stationary and non-polar mobile phase
5. ✖ semi-polar stationary and semi-polar mobile phase

Question Number : 99 Question Id : 696471249 Question Type : MCQ Display Question Number : Yes Single Line Question Option : No Option Orientation : Vertical

Correct : 2 Wrong : 1

In reverse phase HPLC, mobile phase and stationary phase comprises of:

Options :

1. ✖ polar stationary and non-polar mobile phase
2. ✔ stationary phase is nonpolar and mobile phase is polar
3. ✖ polar stationary and polar mobile phase
4. ✖ non-polar stationary and non-polar mobile phase
5. ✖ semi-polar stationary and semi-polar mobile phase

Question Number : 100 Question Id : 696471250 Question Type : MCQ Display Question Number : Yes Single Line Question Option : No Option Orientation : Vertical

Correct : 2 Wrong : 1

In mass spectroscopy, which of the following phases is abbreviated as “MALDI”?

Options :

1. ✖ Mass analyzed by light detected ions
2. ✔ Matrix assisted laser desorption ionization
3. ✖ Many atom loss detecting ionization
4. ✖ Molecular and light detecting instrument
5. ✖ Mass analyzed by less energy ions

Question Number : 100 Question Id : 696471250 Question Type : MCQ Display Question Number : Yes Single Line Question Option : No Option Orientation : Vertical

Correct : 2 Wrong : 1

In mass spectroscopy, which of the following phases is abbreviated as “MALDI”?

Options :

1. ✖ Mass analyzed by light detected ions
2. ✔ Matrix assisted laser desorption ionization
3. ✖ Many atom loss detecting ionization
4. ✖ Molecular and light detecting instrument
5. ✖ Mass analyzed by less energy ions

General Knowledge

Group Maximum Duration :	60
Group Minimum Duration :	60
Revisit allowed for view? :	No
Revisit allowed for edit? :	No

General Knowledge

Mandatory or Optional:	Mandatory
Display Number Panel:	Yes
Group All Questions:	No

Question Number : 101 Question Id : 696471251 Question Type : MCQ Display Question Number : Yes Single Line Question
Option : No Option Orientation : Vertical

Correct : 2 Wrong : 1

The merchants of which of the following places of the Harappan Civilization are reported to be living in Mesopotamia in early Mesopotamian literature?

Options :

1. ✔ Meluhha
2. ✖ Balakot
3. ✖ Lothal
4. ✖ Chanhudaro
5. ✖ None of these

Question Number : 101 Question Id : 696471251 Question Type : MCQ Display Question Number : Yes Single Line Question
Option : No Option Orientation : Vertical

Correct : 2 Wrong : 1

प्राचीन मेसोपोटामियन साहित्य में हड़प्पा सभ्यता के निम्नलिखित में से किस स्थान के व्यापारी मेसोपोटामिया में निवासरत थे?

Options :

1. ✔ मेलुहा
2. ✖ बालाकोट
3. ✖ लोथल

4. ✖ चन्हूदड़ो
5. ✖ इनमें से कोई नहीं

Question Number : 102 Question Id : 696471252 Question Type : MCQ Display Question Number : Yes Single Line Question
Option : No Option Orientation : Vertical

Correct : 2 Wrong : 1

Which of the following Gods became prominent in the Later Vedic period?

1. Prajapati
2. Rudra
3. Indra
4. Vishnu

Options :

1. ✖ 1, 2 and 3
2. ✖ 2, 3 and 4
3. ✔ 1, 2 and 4
4. ✖ 1, 3 and 4
5. ✖ 1, 2, 3 and 4

Question Number : 102 Question Id : 696471252 Question Type : MCQ Display Question Number : Yes Single Line Question
Option : No Option Orientation : Vertical

Correct : 2 Wrong : 1

उत्तर-वैदिक काल में निम्नलिखित में से किन देवताओं को ख्याति प्राप्त थी?

1. प्रजापति
2. रुद्र
3. इन्द्र
4. विष्णु

Options :

1. ✖ 1, 2 एवं 3
2. ✖ 2, 3 एवं 4
3. ✔ 1, 2 एवं 4
4. ✖ 1, 3 एवं 4
5. ✖ 1, 2, 3 एवं 4

Question Number : 103 Question Id : 696471253 Question Type : MCQ Display Question Number : Yes Single Line Question
Option : No Option Orientation : Vertical

Correct : 2 Wrong : 1

Which of the following pairs (post – Gupta dynasty and its capital) is correctly matched?

Options :

1. ✖ Aulikara dynasty – Ujjain



2. ✓ Maukhari dynasty – Kannauj
3. ✗ Pushyabhuti dynasty – Vallabhi
4. ✗ Pallava dynasty – Badami
5. ✗ Pandya dynasty – Kanchi

Question Number : 103 Question Id : 696471253 Question Type : MCQ Display Question Number : Yes Single Line Question
Option : No Option Orientation : Vertical
Correct : 2 Wrong : 1

निम्नलिखित में से कौन-सी जोड़ी (गुप्तोत्तर कालीन राजवंश और उसकी राजधानी) सुमेलित है?

Options :

1. ✗ औलीकर वंश - उज्जैन
2. ✓ मौखरी वंश - कन्नौज
3. ✗ पुष्यभूति वंश - वल्लभी
4. ✗ पल्लव वंश - बदामी
5. ✗ पाण्डय वंश - कांची

Question Number : 104 Question Id : 696471254 Question Type : MCQ Display Question Number : Yes Single Line Question
Option : No Option Orientation : Vertical
Correct : 2 Wrong : 1

Identify the correct statement(s) from the following:

1. Mahmud of Ghazni invaded India seventeen times.
2. His first invasion was on Somnath Temple.
3. He looted and carried away enormous wealth from India.

Options :

1. ✗ Only 1 is correct.
2. ✗ 1 and 2 are correct.
3. ✗ 2 and 3 are correct.
4. ✓ 1 and 3 are correct.
5. ✗ 1, 2 and 3 are correct.

Question Number : 104 Question Id : 696471254 Question Type : MCQ Display Question Number : Yes Single Line Question
Option : No Option Orientation : Vertical
Correct : 2 Wrong : 1

निम्नलिखित में से सही कथन चुनिये।

1. महमूद गजनवी ने भारत पर सत्रह बार आक्रमण किया।
2. उसका प्रथम आक्रमण सोमनाथ मंदिर पर हुआ।
3. वह भारत से विशाल सम्पत्ति लूटकर ले गया।

Options :

- 1. ✖ केवल 1 सही है।
- 2. ✖ 1 एवं 2 सही है।
- 3. ✖ 2 एवं 3 सही है।
- 4. ✔ 1 एवं 3 सही है।
- 5. ✖ 1, 2, एवं 3 सही है।

Question Number : 105 Question Id : 696471255 Question Type : MCQ Display Question Number : Yes Single Line Question
Option : No Option Orientation : Vertical
Correct : 2 Wrong : 1

Match List-1 (Architecture of sultanate period) with List-2 (Places).

List-1	List-2
A. Alai Darwaza	1. Mandu
B. Atala Masjid	2. Jaunpur
C. Jahaz Mahal	3. Pandua
D. Adina Masjid	4. Delhi

- Options :
- 1. ✖ A-4, B-1, C-2, D-3
 - 2. ✖ A-4, B-3, C-1, D-2
 - 3. ✖ A-4, B-2, C-3, D-1
 - 4. ✔ A-4, B-2, C-1, D-3
 - 5. ✖ A-4, B-3, C-2, D-1

Question Number : 105 Question Id : 696471255 Question Type : MCQ Display Question Number : Yes Single Line Question
Option : No Option Orientation : Vertical
Correct : 2 Wrong : 1

सूची 1 (सलतनत कालीन स्थापत्य) को सूची 2 (स्थानों) से सुमेलित कीजिये-

सूची-1	सूची-2
A. अलाई दरवाजा	1. मांडू
B. अटाला मस्जिद	2. जौनपुर
C. जहाज़ महल	3. पंडुआ
D. अदीना मस्जिद	4. दिल्ली

- Options :
- 1. ✖ A-4, B-1, C-2, D-3
 - 2. ✖ A-4, B-3, C-1, D-2
 - 3. ✖ A-4, B-2, C-3, D-1
 - 4. ✔ A-4, B-2, C-1, D-3

5. ✖ A-4, B-3, C-2, D-1

Question Number : 106 Question Id : 696471256 Question Type : MCQ Display Question Number : Yes Single Line Question
Option : No Option Orientation : Vertical
Correct : 2 Wrong : 1

Who amongst the following delivered the famous 'Steel Frame' Speech regarding Indian Civil Services?

Options :

1. ✖ Winston Churchill
2. ✖ Lord Linlithgow
3. ✖ Lord Reading
4. ✔ Lloyd George
5. ✖ Lord Irwin

Question Number : 106 Question Id : 696471256 Question Type : MCQ Display Question Number : Yes Single Line Question
Option : No Option Orientation : Vertical
Correct : 2 Wrong : 1

भारतीय सिविल सेवा के सम्बन्ध में प्रसिद्ध 'स्टील फ्रेम' भाषण निम्नलिखित में से किसने दिया था?

Options :

1. ✖ विंस्टन चर्चिल
2. ✖ लार्ड लिनलिथगो
3. ✖ लार्ड रीडिंग
4. ✔ लायड जार्ज
5. ✖ लार्ड इरविन

Question Number : 107 Question Id : 696471257 Question Type : MCQ Display Question Number : Yes Single Line Question
Option : No Option Orientation : Vertical
Correct : 2 Wrong : 1

Who amongst the following had helped Motilal Nehru the most in preparing the 'Nehru Report'?

Options :

1. ✖ Maulana Abul Kalam Azad
2. ✖ Vallabh Bhai Patel
3. ✖ Jawaharlal Nehru
4. ✔ Tej Bahadur Sapru
5. ✖ Subhash Chandra Bose

Question Number : 107 Question Id : 696471257 Question Type : MCQ Display Question Number : Yes Single Line Question
Option : No Option Orientation : Vertical
Correct : 2 Wrong : 1

निम्नलिखित में से किसने नेहरू रिपोर्ट तैयार करने में मोतीलाल नेहरू की सर्वाधिक सहायता की थी?

Options :

1. ✖ मौलाना अबुल कलाम आजाद
2. ✖ वल्लभ भाई पटेल
3. ✖ जवाहरलाल नेहरू
4. ✔ तेज बहादुर सप्रू
5. ✖ सुभाष चन्द्र बोस

Question Number : 108 Question Id : 696471258 Question Type : MCQ Display Question Number : Yes Single Line Question Option : No Option Orientation : Vertical

Correct : 2 Wrong : 1

Which of the following statements is/are correct?

1. Kalchuri administration in Chhattisgarh was monarchic.
2. The King was supported by 'amatyas' in administration.
3. 'Pradhan' was the in charge of village administration.

Options :

1. ✖ Only 1 is correct.
2. ✔ 1 and 2 are correct.
3. ✖ 2 and 3 are correct.
4. ✖ 1 and 3 are correct.
5. ✖ 1, 2 and 3 are correct.

Question Number : 108 Question Id : 696471258 Question Type : MCQ Display Question Number : Yes Single Line Question Option : No Option Orientation : Vertical

Correct : 2 Wrong : 1

निम्नलिखित में से कौन सा/से कथन सही है?

1. छत्तीसगढ़ में कलचुरि प्रशासन राजतंत्रात्मक था।
2. प्रशासन में राजा को 'अमात्यों' की सहायता प्राप्त थी।
3. गांव के प्रशासन का प्रमुख 'प्रधान' होता था।

Options :

1. ✖ केवल 1 सही है।
2. ✔ 1 एवं 2 सही हैं।
3. ✖ 2 एवं 3 सही हैं।
4. ✖ 1 एवं 3 सही हैं।
5. ✖ 1, 2 एवं 3 सही हैं।

Question Number : 109 Question Id : 696471259 Question Type : MCQ Display Question Number : Yes Single Line Question Option : No Option Orientation : Vertical

Correct : 2 Wrong : 1

Which of the following persons of the Bhosla dynasty of Nagpur became the rulers of Chhattisgarh from 1758 to 1811?

- 1. Mudhoji
- 2. Bimbaji
- 3. Chimnaji
- 4. Vyankoji

Options :

- 1. ✖ 1, 2 and 3
- 2. ✔ 2, 3 and 4
- 3. ✖ 1, 2 and 4
- 4. ✖ 1, 3 and 4
- 5. ✖ 1, 2, 3 and 4

Question Number : 109 Question Id : 696471259 Question Type : MCQ Display Question Number : Yes Single Line Question
Option : No Option Orientation : Vertical
Correct : 2 Wrong : 1

नागपुर के भोसला वंश के निम्नलिखित में से कौन से व्यक्ति 1758 से 1811 तक छत्तीसगढ़ के शासक रहे?

- 1. मुधोजी
- 2. बिम्बाजी
- 3. चिमणाजी
- 4. व्यंकोजी

Options :

- 1. ✖ 1, 2 एवं 3
- 2. ✔ 2, 3 एवं 4
- 3. ✖ 1, 2 एवं 4
- 4. ✖ 1, 3 एवं 4
- 5. ✖ 1, 2, 3 एवं 4

Question Number : 110 Question Id : 696471260 Question Type : MCQ Display Question Number : Yes Single Line Question
Option : No Option Orientation : Vertical
Correct : 2 Wrong : 1

Match List-1 (Tribal revolts in Chhattisgarh during Maratha period) with List-2 (Years).

List-1	List-2
A. Tarapur Revolt	1. 1774-77
B. Halba Revolt	2. 1824-25
C. Meria Revolt	3. 1842-54
D. Paralkot Revolt	4. 1842-63

Options :

- 1. ✖ A-1, B-3, C-2, D-4
- 2. ✖ A-2, B-1, C-3, D-4

3. ✖ A-3, B-2, C-4, D-1
4. ✔ A-3, B-1, C-4, D-2
5. ✖ A-4, B-3, C-2, D-1

Question Number : 110 Question Id : 696471260 Question Type : MCQ Display Question Number : Yes Single Line Question
Option : No Option Orientation : Vertical
Correct : 2 Wrong : 1

सूची 1 (छत्तीसगढ़ में मराठा काल में हुए जनजातीय विद्रोह) को सूची 2 (वर्षों) से सुमेलित कीजिये-

सूची-1	सूची-2
A. तारापुर विद्रोह	1. 1774-77
B. हल्बा विद्रोह	2. 1824-25
C. मेरिया विद्रोह	3. 1842-54
D. परलकोट विद्रोह	4. 1842-63

Options :

1. ✖ A-1, B-3, C-2, D-4
2. ✖ A-2, B-1, C-3, D-4
3. ✖ A-3, B-2, C-4, D-1
4. ✔ A-3, B-1, C-4, D-2
5. ✖ A-4, B-3, C-2, D-1

Question Number : 111 Question Id : 696471261 Question Type : MCQ Display Question Number : Yes Single Line Question
Option : No Option Orientation : Vertical
Correct : 2 Wrong : 1

Which of the following statements is/are correct?

1. Chhattisgarh was made a Division of the Central Provinces in 1862.
2. Deputy Commissioner was appointed in each district of Chhattisgarh.
3. All the Zamindaris of Chhattisgarh were granted the status of feudatory state.

Options :

1. ✖ Only 1 is correct.
2. ✔ 1 and 2 are correct.
3. ✖ 2 and 3 are correct.
4. ✖ 1 and 3 are correct.
5. ✖ 1, 2 and 3 are correct.

Question Number : 111 Question Id : 696471261 Question Type : MCQ Display Question Number : Yes Single Line Question
Option : No Option Orientation : Vertical
Correct : 2 Wrong : 1

निम्नलिखित में से कौन सा/से कथन सही है?

- 1. छत्तीसगढ़ को 1862 में मध्यप्रान्त का एक संभाग बनाया गया।
- 2. छत्तीसगढ़ के प्रत्येक जिले में डिप्टी कमिश्नर नियुक्त किये गये।
- 3. छत्तीसगढ़ की समस्त जमीदारियों को करद राज्य का दर्जा दिया गया।

Options :

- 1. ✖ केवल 1 सही है।
- 2. ✔ 1 एवं 2 सही हैं।
- 3. ✖ 2 एवं 3 सही हैं।
- 4. ✖ 1 एवं 3 सही हैं।
- 5. ✖ 1, 2 एवं 3 सही हैं।

Question Number : 112 Question Id : 696471262 Question Type : MCQ Display Question Number : Yes Single Line Question Option : No Option Orientation : Vertical

Correct : 2 Wrong : 1

Match List-1 (Forest Satyagrahas in Chhattisgarh) with List-2 (Dates).

List-1	List-2
A. Rudri Nawagaon	1. June 1930
B. Mohabana	2. July 1930
C. Tamora	3. August 1930
D. Gattasilli	4. September 1930

Options :

- 1. ✖ A-1, B-3, C-4, D-2
- 2. ✖ A-2, B-1, C-3, D-4
- 3. ✔ A-3, B-2, C-4, D-1
- 4. ✖ A-3, B-4, C-2, D-1
- 5. ✖ A-4, B-1, C-2, D-3

Question Number : 112 Question Id : 696471262 Question Type : MCQ Display Question Number : Yes Single Line Question Option : No Option Orientation : Vertical

Correct : 2 Wrong : 1

सूची 1 (छत्तीसगढ़ में हुए जंगल सत्याग्रह) को सूची 2 (तिथि) से सुमेलित कीजिये।

सूची-1	सूची-2
A. रूद्री नवागांव	1. जून 1930
B. मोहबना	2. जुलाई 1930
C. तमोरा	3. अगस्त 1930
D. गढ़ासिल्ली	4. सितंबर 1930

Options :

1. ✖ A-1, B-3, C-4, D-2
2. ✖ A-2, B-1, C-3, D-4
3. ✔ A-3, B-2, C-4, D-1
4. ✖ A-3, B-4, C-2, D-1
5. ✖ A-4, B-1, C-2, D-3

Question Number : 113 Question Id : 696471263 Question Type : MCQ Display Question Number : Yes Single Line Question
Option : No Option Orientation : Vertical

Correct : 2 Wrong : 1

Which of the following pairs (Tribal Revolt in Chhattisgarh during British period and its leader) is correctly matched?

Options :

1. ✖ Koi Revolt of Bastar, 1859 – Jugga Dorla
2. ✖ Muria Revolt of Bastar, 1876 – Jhada Sirha
3. ✔ Bhumkal of Bastar, 1910 – Bhairam Dev
4. ✖ Oraon Revolt of Sarguja, 1918 – Somsai
5. ✖ Gond Revolt of Koriya, 1932 – Budhsingh

Question Number : 113 Question Id : 696471263 Question Type : MCQ Display Question Number : Yes Single Line Question
Option : No Option Orientation : Vertical

Correct : 2 Wrong : 1

निम्नलिखित में से कौन सी जोड़ी (छत्तीसगढ़ में ब्रिटिश काल का जनजातीय विद्रोह एवं उसका नेता) सुमेलित है?

Options :

1. ✖ बस्तर का कोई विद्रोह, 1859 - जुग्गा दोरला
2. ✖ बस्तर का मुरिया विद्रोह, 1876 - झाडा सिरहा
3. ✔ बस्तर का भूमकाल, 1910 - भैरम देव
4. ✖ सरगुजा का उरांव विद्रोह, 1918 - सोमसाय
5. ✖ कोरिया का गोंड विद्रोह, 1932 - बुधसिंह

Question Number : 114 Question Id : 696471264 Question Type : MCQ Display Question Number : Yes Single Line Question
Option : No Option Orientation : Vertical

Correct : 2 Wrong : 1

Which of the following pairs (social / political organization of C.G. and person) is correctly matched?

Options :

1. ✖ Desh – Sevak Samaj, Pendra 1898 – Madhav Rao Sapre
2. ✖ Chhattisgarh Kisan Sabha, Bilaspur 1900 – Kunj Biharilal Agnihotri
3. ✖ Sarva – Seva Samiti, Janjgir 1904 – Thakur Chhedilal
4. ✔ Sammitra Mandal, Rajim 1906 – Pt. Sunderlal Sharma

5. ✖ Navayuwak Mandal, Dhamtari 1906 – Chhotelal Shrivastava

Question Number : 114 Question Id : 696471264 Question Type : MCQ Display Question Number : Yes Single Line Question
Option : No Option Orientation : Vertical
Correct : 2 Wrong : 1

निम्नलिखित में से कौन सी जोड़ी (छ.ग. का सामाजिक/राजनीतिक संगठन एवं व्यक्ति) सुमेलित है?

Options :

1. ✖ देश सेवक समाज, पेण्ड्रा 1898 - माधव राव सप्रे
2. ✖ छत्तीसगढ़ किसान सभा, बिलासपुर 1900 - कुंजबिहारीलाल अग्निहोत्री
3. ✖ सर्व-सेवा समिति, जांजगीर 1904 - ठाकुर छेदीलाल
4. ✔ सम्मित्र मंडल, राजिम 1906 - पं. सुन्दर लाल शर्मा
5. ✖ नवयुवक मंडल, धमतरी 1906 - छोटेलाल श्रीवास्तव

Question Number : 115 Question Id : 696471265 Question Type : MCQ Display Question Number : Yes Single Line Question
Option : No Option Orientation : Vertical
Correct : 2 Wrong : 1

Which of the following is the most recent mountain range in India?

Options :

1. ✖ The Aravallis
2. ✖ The Vindhya range
3. ✔ The Himalayas
4. ✖ The Satpura range
5. ✖ None of these

Question Number : 115 Question Id : 696471265 Question Type : MCQ Display Question Number : Yes Single Line Question
Option : No Option Orientation : Vertical
Correct : 2 Wrong : 1

निम्नलिखित में से भारत में नवीनतम पर्वत श्रेणी कौन सी है?

Options :

1. ✖ अरावली
2. ✖ विन्ध्याचल श्रेणी
3. ✔ हिमालय
4. ✖ सतपुड़ा श्रेणी
5. ✖ इनमें से कोई नहीं

Question Number : 116 Question Id : 696471266 Question Type : MCQ Display Question Number : Yes Single Line Question
Option : No Option Orientation : Vertical
Correct : 2 Wrong : 1

In which of the following states the 'Similipal' biosphere is located?

Options :

1. ✓ Odisha
2. ✗ Chhattisgarh
3. ✗ Jharkhand
4. ✗ Uttarakhand
5. ✗ None of these

Question Number : 116 Question Id : 696471266 Question Type : MCQ Display Question Number : Yes Single Line Question
Option : No Option Orientation : Vertical

Correct : 2 Wrong : 1

‘सिमिलीपाल’ बायोस्फीयर निम्नलिखित में से किस राज्य में स्थित है?

Options :

1. ✓ ओडिशा
2. ✗ छत्तीसगढ़
3. ✗ झारखण्ड
4. ✗ उत्तराखण्ड
5. ✗ इनमें से कोई नहीं

Question Number : 117 Question Id : 696471267 Question Type : MCQ Display Question Number : Yes Single Line Question
Option : No Option Orientation : Vertical

Correct : 2 Wrong : 1

Which of the following is the correct meaning of 'sex ratio' in India?

Options :

1. ✓ Number of females per thousand males.
2. ✗ Number of males per thousand females.
3. ✗ Number of males per thousand adult females.
4. ✗ Number of girl children per thousand male children.
5. ✗ None of these

Question Number : 117 Question Id : 696471267 Question Type : MCQ Display Question Number : Yes Single Line Question
Option : No Option Orientation : Vertical

Correct : 2 Wrong : 1

भारत में निम्नलिखित में से 'लिंगानुपात' का सही अभिप्राय कौन सा है?

Options :

1. ✓ प्रति हजार पुरुषों पर स्त्रियों की संख्या
2. ✗ प्रति हजार स्त्रियों पर पुरुषों की संख्या
3. ✗ प्रति हजार वयस्क स्त्रियों पर पुरुषों की संख्या

- 4. ✖ प्रति हजार लड़कों पर लड़कियों की संख्या
- 5. ✖ इनमें से कोई नहीं

Question Number : 118 Question Id : 696471268 Question Type : MCQ Display Question Number : Yes Single Line Question
Option : No Option Orientation : Vertical
Correct : 2 Wrong : 1

In which of the following states is the Kolleru lake located?

- Options :
- 1. ✖ Odisha
 - 2. ✔ Andhra Pradesh
 - 3. ✖ Telangana
 - 4. ✖ Kerala
 - 5. ✖ None of the above

Question Number : 118 Question Id : 696471268 Question Type : MCQ Display Question Number : Yes Single Line Question
Option : No Option Orientation : Vertical
Correct : 2 Wrong : 1

कोल्लेरु झील निम्नलिखित में से किस राज्य में स्थित है?

- Options :
- 1. ✖ ओडिशा
 - 2. ✔ आंध्र प्रदेश
 - 3. ✖ तेलंगाना
 - 4. ✖ केरल
 - 5. ✖ उपरोक्त में से कोई नहीं

Question Number : 119 Question Id : 696471269 Question Type : MCQ Display Question Number : Yes Single Line Question
Option : No Option Orientation : Vertical
Correct : 2 Wrong : 1

Match List-I with List-II and select the correct answer using the codes given below.

List-I (Rivers)	List-II (Tributaries)
a. Krishana	1. Chambal
b. Brahmaputra	2. Indravati
c. Godavari	3. Tista
d. Yamuna	4. Bhina

- Options :
- 1. ✔ a-4, b-3, c-2, d-1
 - 2. ✖ a-3, b-4, c-1, d-2
 - 3. ✖ a-4, b-3, c-1, d-2
 - 4. ✖ a-3, b-4, c-2, d-1

5. ✖ None of the above

Question Number : 119 Question Id : 696471269 Question Type : MCQ Display Question Number : Yes Single Line Question
Option : No Option Orientation : Vertical
Correct : 2 Wrong : 1
निम्नलिखित सूची-I को सूची-II से सुमेलित कीजिए तथा उनके नीचे दिये कोड की मदद से सही उत्तर चुनिए।

सूची-I (नदीयां)	सूची-II (सहायक नदीयां)
a. कृष्णा	1. चम्बल
b. ब्रह्मपुत्र	2. इन्द्रावती
c. गोदावरी	3. तिस्ता
d. यमुना	4. भीना

Options :

- 1. ✔ a-4, b-3, c-2, d-1
- 2. ✖ a-3, b-4, c-1, d-2
- 3. ✖ a-4, b-3, c-1, d-2
- 4. ✖ a-3, b-4, c-2, d-1
- 5. ✖ उपरोक्त में से कोई नहीं

Question Number : 120 Question Id : 696471270 Question Type : MCQ Display Question Number : Yes Single Line Question
Option : No Option Orientation : Vertical
Correct : 2 Wrong : 1

In which of the following groups, districts of highest and lowest density of population in 2011 are noted?

Options :

- 1. ✖ Janjgir Champa – Dantewada
- 2. ✖ Durg – Narayanpur
- 3. ✖ Raipur – Dantewada
- 4. ✖ Durg – Bijapur
- 5. ✔ None of the above

Question Number : 120 Question Id : 696471270 Question Type : MCQ Display Question Number : Yes Single Line Question
Option : No Option Orientation : Vertical
Correct : 2 Wrong : 1

निम्नलिखित किस समूह में, वर्ष 2011 के अधिकतम और न्यूनतम जनसंख्या घनत्व वाले जिले अंकित हैं?

Options :

- 1. ✖ जांजगीर चांपा - दन्तेवाड़ा
- 2. ✖ दुर्ग - नारायणपुर
- 3. ✖ रायपुर - दन्तेवाड़ा
- 4. ✖ दुर्ग - बीजापुर

5. ✓ उपरोक्त में से कोई नहीं

Question Number : 121 Question Id : 696471271 Question Type : MCQ Display Question Number : Yes Single Line Question
Option : No Option Orientation : Vertical

Correct : 2 Wrong : 1

In which district of Chhattisgarh the Hasdeo barrage is located?

Options :

1. ✗ Janjgir – Champa
2. ✗ Surajpur
3. ✓ Korba
4. ✗ Bilaspur
5. ✗ None of the above

Question Number : 121 Question Id : 696471271 Question Type : MCQ Display Question Number : Yes Single Line Question
Option : No Option Orientation : Vertical

Correct : 2 Wrong : 1

हसदेव बराज छत्तीसगढ़ के किस जिले में स्थित है?

Options :

1. ✗ जांजगीर-चांपा
2. ✗ सूरजपुर
3. ✓ कोरबा
4. ✗ बिलासपुर
5. ✗ उपरोक्त में से कोई नहीं

Question Number : 122 Question Id : 696471272 Question Type : MCQ Display Question Number : Yes Single Line Question
Option : No Option Orientation : Vertical

Correct : 2 Wrong : 1

Which of the following parts of Chhattisgarh is composed of oldest rock formation?

Options :

1. ✗ Hasdeo – Rampur Basin
2. ✗ Raipur upland
3. ✓ Bailadila hills
4. ✗ Surguja basin
5. ✗ None of the above

Question Number : 122 Question Id : 696471272 Question Type : MCQ Display Question Number : Yes Single Line Question
Option : No Option Orientation : Vertical

Correct : 2 Wrong : 1

छत्तीसगढ़ के निम्नलिखित भागों में कौन सा सबसे पुरातन शैलों से बना है?

Options :

1. ✖ हसदेव-रामपुर बेसिन
2. ✖ रायपुर उच्चभूमि
3. ✔ बैलाडीला की पहाडियां
4. ✖ सरगुजा बेसिन
5. ✖ उपरोक्त में से कोई नहीं

Question Number : 123 Question Id : 696471273 Question Type : MCQ Display Question Number : Yes Single Line Question
 Option : No Option Orientation : Vertical
 Correct : 2 Wrong : 1

Which Article of Indian Constitution prohibits 'Begar and forced labour' and declares it an offence?

Options :

1. ✖ Article 21
2. ✖ Article 22
3. ✔ Article 23
4. ✖ Article 24
5. ✖ None of these

Question Number : 123 Question Id : 696471273 Question Type : MCQ Display Question Number : Yes Single Line Question
 Option : No Option Orientation : Vertical
 Correct : 2 Wrong : 1

भारतीय संविधान का कौन-सा अनुच्छेद "बेगार और बलात् श्रम" को प्रतिबिद्ध करता है तथा उसे अपराध घोषित करता है?

Options :

1. ✖ अनुच्छेद 21
2. ✖ अनुच्छेद 22
3. ✔ अनुच्छेद 23
4. ✖ अनुच्छेद 24
5. ✖ इनमें से कोई नहीं

Question Number : 124 Question Id : 696471274 Question Type : MCQ Display Question Number : Yes Single Line Question
 Option : No Option Orientation : Vertical
 Correct : 2 Wrong : 1

Any political party in India can be recognised as national party if it has state party status in at least:

Options :

1. ✖ Three states
2. ✔ Four states
3. ✖ Five states

- 4. ✖ Seven states
- 5. ✖ None of the above

Question Number : 124 Question Id : 696471274 Question Type : MCQ Display Question Number : Yes Single Line Question
Option : No Option Orientation : Vertical
Correct : 2 Wrong : 1

भारत में कोई भी राजनीतिक दल राष्ट्रीय दल के रूप में मान्यता प्राप्त कर सकता है, यदि वह राज्य स्तर का दल है कम से कम:

Options :

- 1. ✖ तीन राज्यों में
- 2. ✔ चार राज्यों में
- 3. ✖ पांच राज्यों में
- 4. ✖ सात राज्यों में
- 5. ✖ उपर्युक्त में से कोई नहीं

Question Number : 125 Question Id : 696471275 Question Type : MCQ Display Question Number : Yes Single Line Question
Option : No Option Orientation : Vertical
Correct : 2 Wrong : 1

Adhoc judges are appointed in the supreme court when:

Options :

- 1. ✖ Some judges go on long leave
- 2. ✔ There is no quorum of the Judges available to hold any session of the court
- 3. ✖ No one is available for permanent appointment
- 4. ✖ There is an abnormal increase in cases pending before the court
- 5. ✖ None of the above

Question Number : 125 Question Id : 696471275 Question Type : MCQ Display Question Number : Yes Single Line Question
Option : No Option Orientation : Vertical
Correct : 2 Wrong : 1

सर्वोच्च न्यायालय में तदर्थ न्यायाधीशों की नियुक्ति होती है जब:

Options :

- 1. ✖ कतिपय न्यायाधीश दीर्घकालीन अवकाश पर जाते हैं
- 2. ✔ न्यायालय के किसी सत्र के लिए न्यायाधीशों की गणपूर्ति नहीं होती
- 3. ✖ स्थायी नियुक्ति के लिए कोई उपलब्ध नहीं होता
- 4. ✖ न्यायालय के समक्ष लम्बितवादों में असाधारण वृद्धि होती है
- 5. ✖ उपर्युक्त में से कोई नहीं



Question Number : 126 Question Id : 696471276 Question Type : MCQ Display Question Number : Yes Single Line Question
Option : No Option Orientation : Vertical
Correct : 2 Wrong : 1

The seating of the House of the people may be terminated by:

Options :

1. ✖ Adjournment
2. ✖ Prorogation
3. ✖ Dissolution
4. ✔ All of the above
5. ✖ None of the above

Question Number : 126 Question Id : 696471276 Question Type : MCQ Display Question Number : Yes Single Line Question
Option : No Option Orientation : Vertical
Correct : 2 Wrong : 1

लोकसभा की बैठक समाप्त की जा सकती है:

Options :

1. ✖ स्थगन द्वारा
2. ✖ सत्रावसान द्वारा
3. ✖ विघटन द्वारा
4. ✔ उपर्युक्त में से सभी
5. ✖ उपरोक्त में से कोई नहीं

Question Number : 127 Question Id : 696471277 Question Type : MCQ Display Question Number : Yes Single Line Question
Option : No Option Orientation : Vertical
Correct : 2 Wrong : 1

The first 'Official Languages Commission' under the provision of Article 344 of the Indian constitution was set up in:

Options :

1. ✖ 1950 with K. M. Munshi as Chairman.
2. ✔ 1955 with B. G. Kher as Chairman.
3. ✖ 1960 with M. C. Chhagla as Chairman.
4. ✖ 1965 with Humayun Kabir as Chairman.
5. ✖ None of the above

Question Number : 127 Question Id : 696471277 Question Type : MCQ Display Question Number : Yes Single Line Question
Option : No Option Orientation : Vertical
Correct : 2 Wrong : 1

भारतीय संविधान के अनुच्छेद 344 के अन्तर्गत प्रथम 'राजकीय भाषा आयोग' का गठन हुआ था:

Options :

1. ✖ 1950 में के.एम.मुंशी की अध्यक्षता में
2. ✔ 1955 में बी.जी.खेर की अध्यक्षता में

3. ✖ 1960 में एम.सी.छागला की अध्यक्षता में
4. ✖ 1965 में हुमायूं कबीर की अध्यक्षता में
5. ✖ उपर्युक्त में से कोई नहीं

Question Number : 128 Question Id : 696471278 Question Type : MCQ Display Question Number : Yes Single Line Question
Option : No Option Orientation : Vertical
Correct : 2 Wrong : 1

Which of the following statements is/are correct?

- (i) For the election of Panch, candidate submits an affidavit with nomination form.
- (ii) For the election of Panch, candidate submits a self-declaration with nomination form.
- (iii) For the election of Panch, candidate has no need to submit an affidavit or self-declaration.
- (iv) For the election of Sarpanch, candidate submits an affidavit with nomination form.
- (v) For the election of Sarpanch, candidate submits a self-declaration with nomination form.
- (vi) For the election of Sarpanch, candidate has no need to submit an affidavit or self-declaration.

Options :

1. ✖ (i) and (iv)
2. ✔ (iii) and (v)
3. ✖ (ii) and (vi)
4. ✖ (ii) and (v)
5. ✖ (iii) and (iv)

Question Number : 128 Question Id : 696471278 Question Type : MCQ Display Question Number : Yes Single Line Question
Option : No Option Orientation : Vertical
Correct : 2 Wrong : 1

निम्नलिखित में से कौन सा/से कथन सही है?

- (i) पंच के निर्वाचन के लिए अभ्यर्थी नामांकन पत्र के साथ एक शपथपत्र प्रस्तुत करता है।
- (ii) पंच के निर्वाचन के लिए अभ्यर्थी नामांकन पत्र के साथ एक स्वघोषणापत्र प्रस्तुत करता है।
- (iii) पंच के निर्वाचन के लिए अभ्यर्थी को नामांकन पत्र के साथ शपथपत्र या स्वघोषणापत्र प्रस्तुत करने की आवश्यकता नहीं होती।
- (iv) सरपंच के निर्वाचन के लिए अभ्यर्थी नामांकन पत्र के साथ शपथपत्र प्रस्तुत करता है।
- (v) सरपंच के निर्वाचन के लिए अभ्यर्थी नामांकन पत्र के साथ स्वघोषणापत्र प्रस्तुत करता है।
- (vi) सरपंच के निर्वाचन के लिए अभ्यर्थी को नामांकन पत्र के साथ शपथपत्र या स्वघोषणापत्र प्रस्तुत करने की आवश्यकता नहीं होती।

Options :

1. ✖ (i) एवं (iv)
2. ✔ (iii) एवं (v)
3. ✖ (ii) एवं (vi)
4. ✖ (ii) एवं (v)

5. ✖ (iii) एवं (iv)

Question Number : 129 Question Id : 696471279 Question Type : MCQ Display Question Number : Yes Single Line Question Option : No Option Orientation : Vertical

Correct : 2 Wrong : 1

Which of the following statements is/are correct about the recall of President of Municipal Council?

- (i) It should be passed by 3/4 members of council.
- (ii) It should be signed by 3/4 elected councilors.
- (iii) Such resolution shall be sent to collector and collector will refer to the state Govt.
- (iv) Collector will notify for voting for recall.
- (v) The election commission will notify for voting.
- (vi) If 2/3 voters are in favour of resolution, President will be recalled from his office.
- (vii) If more than half voters are in the favour of resolution, president will be recalled from his office.

Options :

- 1. ✖ (i), (iii), (v) and (vii)
- 2. ✖ (ii), (iv), (vi) and (vii)
- 3. ✖ (i), (iii), (iv) and (vi)
- 4. ✔ (ii), (iii), (v) and (vii)
- 5. ✖ None of the above

Question Number : 129 Question Id : 696471279 Question Type : MCQ Display Question Number : Yes Single Line Question Option : No Option Orientation : Vertical

Correct : 2 Wrong : 1

नगरपालिका परिषद के अध्यक्ष के प्रत्यावर्तन के विषय में निम्न में से कौन सा/से कथन सही है?

- (i) यह परिषद के 3/4 सदस्यों द्वारा पारित किया जाना चाहिए।
- (ii) यह परिषद के 3/4 निर्वाचित पार्षदों द्वारा हस्ताक्षरित होना चाहिए।
- (iii) ऐसा प्रस्ताव कलेक्टर के पास भेजा जाएगा और कलेक्टर उसे राज्य शासन के पास भेजेगा।
- (iv) कलेक्टर प्रत्यावर्तन हेतु मतदान की अधिसूचना जारी करेगा।
- (v) निर्वाचन आयोग मतदान की अधिसूचना जारी करेगा।
- (vi) यदि प्रस्ताव के पक्ष में 2/3 मतदाता हों तो अध्यक्ष अपने पद से प्रत्यावर्तित हो जाएगा।
- (vii) यदि प्रस्ताव के पक्ष में आधे से अधिक मतदाता हों तो अध्यक्ष अपने पद से प्रत्यावर्तित हो जाएगा।

Options :

- 1. ✖ (i), (iii), (v) एवं (vii)
- 2. ✖ (ii), (iv), (vi) एवं (vii)
- 3. ✖ (i), (iii), (iv) एवं (vi)
- 4. ✔ (ii), (iii), (v) एवं (vii)
- 5. ✖ उपर्युक्त में से कोई नहीं

Question Number : 130 Question Id : 696471280 Question Type : MCQ Display Question Number : Yes Single Line Question Option : No Option Orientation : Vertical



Correct : 2 Wrong : 1

A nomination form for the election of Sarpanch may be declared invalid if:

- (i) Self-declaration is not attached with nomination form.
- (ii) Affidavit is not attached with nomination form.
- (iii) Security Deposit is not paid cash with nomination form.
- (iv) It is not signed by Panchayat Secretary.

Options :

- 1. ✓ (i) and (iii)
- 2. ✗ (ii) and (iii)
- 3. ✗ (i) and (iv)
- 4. ✗ (ii) and (iv)
- 5. ✗ (i) and (ii)

Question Number : 130 Question Id : 696471280 Question Type : MCQ Display Question Number : Yes Single Line Question
Option : No Option Orientation : Vertical

Correct : 2 Wrong : 1

सरपंच के चुनाव में एक नामांकन पत्र अवैध घोषित किया जा सकता है, यदि:

- (i) नामांकन पत्र के साथ स्वघोषणा पत्र संलग्न न हो।
- (ii) नामांकन पत्र के साथ शपथपत्र संलग्न न हो।
- (iii) नामांकन पत्र के साथ प्रतिभूति निक्षेप नगद जमा न किया गया हो।
- (iv) इस पर पंचायत सचिव के हस्ताक्षर न हों।

Options :

- 1. ✓ (i) एवं (iii)
- 2. ✗ (ii) एवं (iii)
- 3. ✗ (i) एवं (iv)
- 4. ✗ (ii) एवं (iv)
- 5. ✗ (i) एवं (ii)

Question Number : 131 Question Id : 696471281 Question Type : MCQ Display Question Number : Yes Single Line Question
Option : No Option Orientation : Vertical

Correct : 2 Wrong : 1

Which of the following is NOT included in non-debt receipts of central Government?

Options :

- 1. ✗ Tax Revenue
- 2. ✗ Non-tax Revenue
- 3. ✗ Recovery of Loans
- 4. ✓ Foreign Direct Investment
- 5. ✗ All the above

Question Number : 131 Question Id : 696471281 Question Type : MCQ Display Question Number : Yes Single Line Question
Option : No Option Orientation : Vertical

Correct : 2 Wrong : 1

केन्द्रीय सरकार के गैरऋण प्राप्तियों में क्या शामिल नहीं है?

Options :

1. ✗ कर-राजस्व
2. ✗ गैर-कर-राजस्व
3. ✗ ऋण की पुनर्प्राप्ति
4. ✓ विदेशी प्रत्यक्ष निवेश
5. ✗ उपरोक्त सभी

Question Number : 132 Question Id : 696471282 Question Type : MCQ Display Question Number : Yes Single Line Question
Option : No Option Orientation : Vertical

Correct : 2 Wrong : 1

Which of the following items had maximum contribution in Capital Account of Balance of Payment of India in the year 2016-17?

Options :

1. ✗ Net External Assistance
2. ✗ Net Commercial Borrowings
3. ✗ Net Non-Resident Deposits
4. ✓ Net Foreign Investment
5. ✗ None of these

Question Number : 132 Question Id : 696471282 Question Type : MCQ Display Question Number : Yes Single Line Question
Option : No Option Orientation : Vertical

Correct : 2 Wrong : 1

वर्ष 2016-17 में भारत के भुगतान संतुलन के पूंजी खाते में सबसे अधिक योगदान किस मद का रहा है?

Options :

1. ✗ विशुद्ध विदेशी सहायता
2. ✗ विशुद्ध वाणिज्यिक ऋण
3. ✗ विशुद्ध अनिवासी जमा
4. ✓ विशुद्ध विदेशी निवेश
5. ✗ इनमें से कोई नहीं

Question Number : 133 Question Id : 696471283 Question Type : MCQ Display Question Number : Yes Single Line Question
Option : No Option Orientation : Vertical

Correct : 2 Wrong : 1

The most important source of capital formation in India is:

Options :

1. ✖ Public Sector Savings
2. ✖ Corporate Savings
3. ✔ Household Sector Savings
4. ✖ Government Revenue – Surplus
5. ✖ None of these

Question Number : 133 Question Id : 696471283 Question Type : MCQ Display Question Number : Yes Single Line Question
Option : No Option Orientation : Vertical

Correct : 2 Wrong : 1

भारत में पूंजी-निर्माण का सर्वाधिक महत्वपूर्ण स्रोत _____ है।

Options :

1. ✖ सार्वजनिक क्षेत्र की बचत
2. ✖ निगम क्षेत्र की बचत
3. ✔ घरेलू क्षेत्र की बचत
4. ✖ सरकारी राजस्व-अधिक्य
5. ✖ इनमें से कोई नहीं

Question Number : 134 Question Id : 696471284 Question Type : MCQ Display Question Number : Yes Single Line Question
Option : No Option Orientation : Vertical

Correct : 2 Wrong : 1

How much paddy was purchased by Government of Chhattisgarh in the year 2016-17 till 11th January 2017?

Options :

1. ✖ 63.10 lakh ton
2. ✖ 61.5 lakh ton
3. ✖ 59.29 lakh ton
4. ✔ 56.35 lakh ton
5. ✖ None of these

Question Number : 134 Question Id : 696471284 Question Type : MCQ Display Question Number : Yes Single Line Question
Option : No Option Orientation : Vertical

Correct : 2 Wrong : 1

छत्तीसगढ़ सरकार ने वर्ष 2016-17 में 11 जनवरी 2017 तक कितने लाख टन धान खरीदी थी?

Options :

1. ✖ 63.10 लाख टन
2. ✖ 61.5 लाख टन
3. ✖ 59.29 लाख टन
4. ✔ 56.35 लाख टन

5. ✖ इनमें से कोई नहीं

Question Number : 135 Question Id : 696471285 Question Type : MCQ Display Question Number : Yes Single Line Question
Option : No Option Orientation : Vertical

Correct : 2 Wrong : 1

In how many forest Mandals, UNDP projects are conducted in Chhattisgarh?

Options :

- 1. ✖ 05
- 2. ✔ 07
- 3. ✖ 09
- 4. ✖ 11
- 5. ✖ None of these

Question Number : 135 Question Id : 696471285 Question Type : MCQ Display Question Number : Yes Single Line Question
Option : No Option Orientation : Vertical

Correct : 2 Wrong : 1

यू.एन.डी.पी. परियोजना, छत्तीसगढ़ के कितने वनमण्डलों में संचालित की गयी है?

Options :

- 1. ✖ 05
- 2. ✔ 07
- 3. ✖ 09
- 4. ✖ 11
- 5. ✖ इनमें से कोई नहीं

Question Number : 136 Question Id : 696471286 Question Type : MCQ Display Question Number : Yes Single Line Question
Option : No Option Orientation : Vertical

Correct : 2 Wrong : 1

Which of the following major minerals has the highest royalty per ton in Chhattisgarh?

Options :

- 1. ✖ Coal
- 2. ✔ Iron – ore
- 3. ✖ Bauxite
- 4. ✖ Lime – Stone
- 5. ✖ None of these

Question Number : 136 Question Id : 696471286 Question Type : MCQ Display Question Number : Yes Single Line Question
Option : No Option Orientation : Vertical

Correct : 2 Wrong : 1

छत्तीसगढ़ में निम्न में से किस मुख्य खनिज की रॉयल्टी दर प्रति टन सबसे अधिक है?

Options :

- 1. ✖ कोयला

- 2. ✓ लोह-अयस्क
- 3. ✗ बॉक्साइट
- 4. ✗ चूना-पत्थर
- 5. ✗ इनमें से कोई नहीं

Question Number : 137 Question Id : 696471287 Question Type : MCQ Display Question Number : Yes Single Line Question
Option : No Option Orientation : Vertical
Correct : 2 Wrong : 1

Which country won the “Women Asia Twenty-20 Cricket 2016”?

Options :

- 1. ✓ India
- 2. ✗ Pakistan
- 3. ✗ Sri Lanka
- 4. ✗ Bangladesh
- 5. ✗ None of these

Question Number : 137 Question Id : 696471287 Question Type : MCQ Display Question Number : Yes Single Line Question
Option : No Option Orientation : Vertical
Correct : 2 Wrong : 1

किस देश ने “महिला एशिया ट्वन्टी-20 क्रिकेट 2016” जीता?

Options :

- 1. ✓ भारत
- 2. ✗ पाकिस्तान
- 3. ✗ श्रीलंका
- 4. ✗ बांग्लादेश
- 5. ✗ इनमें से कोई नहीं

Question Number : 138 Question Id : 696471288 Question Type : MCQ Display Question Number : Yes Single Line Question
Option : No Option Orientation : Vertical
Correct : 2 Wrong : 1

To whom Serena Williams has equaled by wining Grand Slam Wimbledon?

Options :

- 1. ✗ Martina Navratilova
- 2. ✓ Steffi Graf
- 3. ✗ Sania Mirza
- 4. ✗ Venus Williams
- 5. ✗ None of these

Question Number : 138 Question Id : 696471288 Question Type : MCQ Display Question Number : Yes Single Line Question
Option : No Option Orientation : Vertical

Correct : 2 Wrong : 1

सेरेना विलियम्स ने ग्रैंड स्लेम विंबलडन जीतकर किसकी बराबरी की?

Options :

1. ✖ मार्टिना नवरातिलोवा
2. ✔ स्टेफी ग्राफ
3. ✖ सानिया मिर्जा
4. ✖ वीनस विलियम्स
5. ✖ इनमें से कोई नहीं

Question Number : 139 Question Id : 696471289 Question Type : MCQ Display Question Number : Yes Single Line Question Option : No Option Orientation : Vertical

Correct : 2 Wrong : 1

The word "Tundra" Means:

Options :

1. ✖ Fertile Land
2. ✖ Mountain
3. ✔ Barren Land
4. ✖ All of the above
5. ✖ None of the above

Question Number : 139 Question Id : 696471289 Question Type : MCQ Display Question Number : Yes Single Line Question Option : No Option Orientation : Vertical

Correct : 2 Wrong : 1

"टुण्ड्रा" शब्द का अर्थ है:

Options :

1. ✖ उपजाऊ भूमि
2. ✖ पहाड़
3. ✔ बंजर भूमि
4. ✖ उपरोक्त सभी
5. ✖ उपरोक्त में से कोई नहीं

Question Number : 140 Question Id : 696471290 Question Type : MCQ Display Question Number : Yes Single Line Question Option : No Option Orientation : Vertical

Correct : 2 Wrong : 1

Which of the following Ministries launched the 'VIKALP' scheme?

Options :

1. ✔ Railways
2. ✖ Finance
3. ✖ Women and Child Development

- 4. ✖ Commerce
- 5. ✖ Foreign Affairs

Question Number : 140 Question Id : 696471290 Question Type : MCQ Display Question Number : Yes Single Line Question
Option : No Option Orientation : Vertical
Correct : 2 Wrong : 1

‘विकल्प’ योजना निम्न में से किस मंत्रालय के द्वारा प्रारम्भ की गई है?

Options :

- 1. ✔ रेलवे
- 2. ✖ वित्त
- 3. ✖ महिला एवं बाल विकास
- 4. ✖ वाणिज्य
- 5. ✖ विदेशी मामले

Question Number : 141 Question Id : 696471291 Question Type : MCQ Display Question Number : Yes Single Line Question
Option : No Option Orientation : Vertical
Correct : 2 Wrong : 1

Amaravati, the new capital of Andhra Pradesh, is situated on the banks of which river?

Options :

- 1. ✖ Kaveri
- 2. ✔ Krishna
- 3. ✖ Godavari
- 4. ✖ Tungabhadra
- 5. ✖ Narmada

Question Number : 141 Question Id : 696471291 Question Type : MCQ Display Question Number : Yes Single Line Question
Option : No Option Orientation : Vertical
Correct : 2 Wrong : 1

आंध्र प्रदेश की नई राजधानी, अमरावती, किस नदी के तट पर स्थित है?

Options :

- 1. ✖ कावेरी
- 2. ✔ कृष्णा
- 3. ✖ गोदावरी
- 4. ✖ तुंगभद्रा
- 5. ✖ नर्मदा

Question Number : 142 Question Id : 696471292 Question Type : MCQ Display Question Number : Yes Single Line Question
Option : No Option Orientation : Vertical
Correct : 2 Wrong : 1

Who performs the Hulki dance?

Options :

1. ✓ Muria
2. ✗ Baiga
3. ✗ Kamar
4. ✗ Oraon
5. ✗ None of these

Question Number : 142 Question Id : 696471292 Question Type : MCQ Display Question Number : Yes Single Line Question
Option : No Option Orientation : Vertical

Correct : 2 Wrong : 1

‘हुलकी’ नृत्य कौन करते हैं?

Options :

1. ✓ मुरिया
2. ✗ बैगा
3. ✗ कमार
4. ✗ उरांव
5. ✗ इनमें से कोई नहीं

Question Number : 143 Question Id : 696471293 Question Type : MCQ Display Question Number : Yes Single Line Question
Option : No Option Orientation : Vertical

Correct : 2 Wrong : 1

Which of the following is “Bewara” cultivator scheduled tribe?

Options :

1. ✗ Biar
2. ✗ Binjhwar
3. ✗ Kanwar
4. ✓ Baiga
5. ✗ None of these

Question Number : 143 Question Id : 696471293 Question Type : MCQ Display Question Number : Yes Single Line Question
Option : No Option Orientation : Vertical

Correct : 2 Wrong : 1

निम्नलिखित में से “बेवरा” कृषि करने वाली अनुसूचित जनजाति कौन है?

Options :

1. ✗ बियार
2. ✗ बिझंवार
3. ✗ कंवर
4. ✓ बैगा

5. ✖ इनमें से कोई नहीं

Question Number : 144 Question Id : 696471294 Question Type : MCQ Display Question Number : Yes Single Line Question
Option : No Option Orientation : Vertical

Correct : 2 Wrong : 1

Which of the following is “Penda” cultivator scheduled tribe?

Options :

1. ✖ Pao
2. ✖ Pardhan
3. ✔ Abujhmara
4. ✖ Parja
5. ✖ None of these

Question Number : 144 Question Id : 696471294 Question Type : MCQ Display Question Number : Yes Single Line Question
Option : No Option Orientation : Vertical

Correct : 2 Wrong : 1

निम्नलिखित में से “पेंदा” कृषि करने वाली अनुसूचित जनजाति कौन है?

Options :

1. ✖ पाव
2. ✖ परधान
3. ✔ अबुझमाड़िया
4. ✖ परजा
5. ✖ इनमें से कोई नहीं

Question Number : 145 Question Id : 696471295 Question Type : MCQ Display Question Number : Yes Single Line Question
Option : No Option Orientation : Vertical

Correct : 2 Wrong : 1

The “Malhar” is famous for which of the following?

Options :

1. ✖ Shiv sculpture
2. ✖ Vishnu sculpture
3. ✔ Jain sculpture & Temple remains
4. ✖ Baudh sculpture
5. ✖ None of these

Question Number : 145 Question Id : 696471295 Question Type : MCQ Display Question Number : Yes Single Line Question
Option : No Option Orientation : Vertical

Correct : 2 Wrong : 1

“मल्हार” निम्न में से किस के लिए प्रसिद्ध है?

Options :

1. ✖ शिव प्रतिमा
2. ✖ विष्णु प्रतिमा
3. ✔ जैन प्रतिमा एवं मंदिरों के अवशेष
4. ✖ बौद्ध प्रतिमा
5. ✖ इनमें से कोई नहीं

Question Number : 146 Question Id : 696471296 Question Type : MCQ Display Question Number : Yes Single Line Question
Option : No Option Orientation : Vertical

Correct : 2 Wrong : 1

In which district is the "Teerathgarh" waterfall located?

Options :

1. ✖ Sarguja
2. ✖ Gariaband
3. ✖ Kanker
4. ✔ Bastar
5. ✖ None of these

Question Number : 146 Question Id : 696471296 Question Type : MCQ Display Question Number : Yes Single Line Question
Option : No Option Orientation : Vertical

Correct : 2 Wrong : 1

"तीरथगढ़" जलप्रपात किस जिला में है?

Options :

1. ✖ सरगुजा
2. ✖ गरियाबंद
3. ✖ कांकेर
4. ✔ बस्तर
5. ✖ इनमें से कोई नहीं

Question Number : 147 Question Id : 696471297 Question Type : MCQ Display Question Number : Yes Single Line Question
Option : No Option Orientation : Vertical

Correct : 2 Wrong : 1

In which district the famous "Devbalod" Shiv temple exists?

Options :

1. ✖ Balod
2. ✖ Baloda Bazar
3. ✔ Durg
4. ✖ Raipur
5. ✖ None of these

Question Number : 147 Question Id : 696471297 Question Type : MCQ Display Question Number : Yes Single Line Question
Option : No Option Orientation : Vertical

Correct : 2 Wrong : 1

“देवबलौद” का प्रसिद्ध शिव मंदिर किस जिला में है?

Options :

1. ✖ बालोद
2. ✖ बलौदा बाजार
3. ✔ दुर्ग
4. ✖ रायपुर
5. ✖ इनमें से कोई नहीं

Question Number : 148 Question Id : 696471298 Question Type : MCQ Display Question Number : Yes Single Line Question
Option : No Option Orientation : Vertical

Correct : 2 Wrong : 1

The Arts of Ghadwa is prepared in which of the following places?

Options :

1. ✔ Bastar
2. ✖ Rajnandgaon
3. ✖ Raigad
4. ✖ Sarguja
5. ✖ None of these

Question Number : 148 Question Id : 696471298 Question Type : MCQ Display Question Number : Yes Single Line Question
Option : No Option Orientation : Vertical

Correct : 2 Wrong : 1

घड़वा कला निम्न में से किस जगह निर्मित होता है?

Options :

1. ✔ बस्तर
2. ✖ राजनांदगांव
3. ✖ रायगढ़
4. ✖ सरगुजा
5. ✖ इनमें से कोई नहीं

Question Number : 149 Question Id : 696471299 Question Type : MCQ Display Question Number : Yes Single Line Question
Option : No Option Orientation : Vertical

Correct : 2 Wrong : 1

When was the Lokseva Guarantee Adhiniyam implemented in the state of Chhattisgarh?

Options :

1. ✖ 2009

- 2. ✖ 2010
- 3. ✔ 2011
- 4. ✖ 2012
- 5. ✖ None of these

Question Number : 149 Question Id : 696471299 Question Type : MCQ Display Question Number : Yes Single Line Question
Option : No Option Orientation : Vertical
Correct : 2 Wrong : 1

छत्तीसगढ़ में लोकसेवा गारंटी अधिनियम कब लागू हुआ?

Options :

- 1. ✖ 2009
- 2. ✖ 2010
- 3. ✔ 2011
- 4. ✖ 2012
- 5. ✖ इनमें से कोई नहीं

Question Number : 150 Question Id : 696471300 Question Type : MCQ Display Question Number : Yes Single Line Question
Option : No Option Orientation : Vertical
Correct : 2 Wrong : 1

Mukhyamantri Swasthya Bima Scheme was inaugurated in which of the years in Chhattisgarh?

Options :

- 1. ✖ 2010
- 2. ✖ 2011
- 3. ✔ 2012
- 4. ✖ 2013
- 5. ✖ None of these

Question Number : 150 Question Id : 696471300 Question Type : MCQ Display Question Number : Yes Single Line Question
Option : No Option Orientation : Vertical
Correct : 2 Wrong : 1

मुख्यमंत्री स्वास्थ्य बीमा योजना का छत्तीसगढ़ में, निम्न में से किस वर्ष शुभारंभ हुआ?

Options :

- 1. ✖ 2010
- 2. ✖ 2011
- 3. ✔ 2012
- 4. ✖ 2013
- 5. ✖ इनमें से कोई नहीं