



Teachingninja.in



Latest Govt Job updates



Private Job updates



Free Mock tests available



Visit - teachingninja.in



JKSSB Driver

Previous Year Paper
07 Feb, 2023 Shift 1



Subject : D0_7FEBSH1_JKSSB**Question ID:- 82**

Which form is to be filled to apply for the Pollution Under Control Certificate?

Options:-

- Form 29, Option ID :- 325,
- Form 49, Option ID :- 326,
- Form 59, Option ID :- 327,
- Form 69, Option ID :- 328,

Answer Given:- Form 59, Option ID : -327

Correct Answer :- Form 59 Option ID :- 327

Question ID:- 92

Which of the following comprises the check of the shock absorber?

Options:-

- Braking system, Option ID :- 365,
- Steering system, Option ID :- 366,
- Wheel system, Option ID :- 367,
- Body, Option ID :- 368,

Answer Given:- Steering system, Option ID : -366

Correct Answer :- Wheel system Option ID :- 367

Question ID:- 96

Which of the following is NOT a function of the chassis?

Options:-

- Withstand the centrifugal force while taking a turn, Option ID :- 381,
- Carry the weight of the vehicle and the passengers, Option ID :- 382,
- Withstand the accelerating and braking torques, Option ID :- 383,
- Generate the power stroke by igniting the fuel, Option ID :- 384,

Answer Given:- Not Attempted

Correct Answer :- Generate the power stroke by igniting the fuel Option ID :- 384

Question ID:- 10459

The below given sign indicates which of the following ?



Options:-

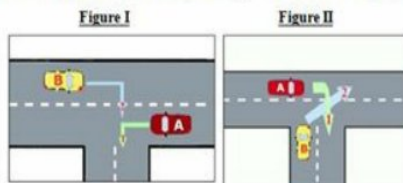
- Barrier Ahead , Option ID :- 11833,
- Gap in median , Option ID :- 11834,
- Rough Road , Option ID :- 11835,
- Cross Road , Option ID :- 11836,

Answer Given:- Barrier Ahead , Option ID : -11833

Correct Answer :- Barrier Ahead Option ID :- 11833

Question ID:- 7

Which vehicles in the below images have the right of way?



Options:-

- A in figure I and B in figure II, Option ID :- 25,
- B in figure I and A in figure II, Option ID :- 26,
- A in figure I and A in figure II, Option ID :- 27,
- B in figure I and B in figure II, Option ID :- 28,

Answer Given:- B in figure I and A in figure II, Option ID : -26

Correct Answer :- A in figure I and A in figure II Option ID :- 27

Question ID:- 104

Which brakes are mostly rotating devices with a stationary pad and a rotating wear surface?

Options:-

- Pumping brakes, Option ID :- 413,
- Electromagnetic brakes, Option ID :- 414,
- Friction brakes, Option ID :- 415,
- Vacuum brakes, Option ID :- 416,

Answer Given:- Not Attempted

Correct Answer :- Friction brakes Option ID :- 415

Question ID:- 77

Which of the following is NOT a mandatory document to be produced while driving?

Options:-

- Driving licence, Option ID :- 305,
- Vehicle registration certificate, Option ID :- 306,
- Vehicle Invoice, Option ID :- 307,
- Vehicle insurance certificate, Option ID :- 308,

Answer Given:- Vehicle Invoice, Option ID : -307

Correct Answer :- Vehicle Invoice Option ID :- 307

Question ID:- 23

What is the permissible width of the border of a road sign's definition plate?

Options:-

- 25 mm, Option ID :- 89,
- 20 mm, Option ID :- 90,
- 30 mm, Option ID :- 91,
- 23 mm, Option ID :- 92,

Answer Given:- Not Attempted

Correct Answer :- 20 mm Option ID :- 90

Question ID:- 107

Which of the following is NOT a component of an electric starting system of a vehicle?

Options:-

- Battery cables, Option ID :- 425,
- Starter switch, Option ID :- 426,
- Starter relay, Option ID :- 427,
- Hydraulic hoses, Option ID :- 428,

Answer Given:- Hydraulic hoses, Option ID :- 428

Correct Answer :- Hydraulic hoses Option ID :- 428

Question ID:- 119

Which of these is NOT one of the four steps that apply when dealing with a emergency on road?

Options:-

- Make area safe, Option ID :- 473,
- Evaluate the injured person for injuries, Option ID :- 474,
- Move the injured person from the scene of the incident immediately, Option ID :- 475,
- Seek help, Option ID :- 476,

Answer Given:- Move the injured person from the scene of the incident immediately, Option ID :- 475

Correct Answer :- Move the injured person from the scene of the incident immediately Option ID :- 475

Question ID:- 10467

Which form needs to be filled while applying for a learner's licence?

Options:-

- Form 3 , Option ID :- 11865,
- Form 10 , Option ID :- 11866,
- Form 13 , Option ID :- 11867,
- Form 15 , Option ID :- 11868,

Answer Given:- Form 3 , Option ID :- 11865

Correct Answer :- Form 3 Option ID :- 11865

Question ID:- 4

According to the "Tyre and Tarmac Rule", what should be the ideal distance between two vehicles back-to-back?

Options:-

- 0.5-1.5 feet, Option ID :- 13,
- 7-9 feet, Option ID :- 14,

▪ 4-5 feet, Option ID :- 15,

▪ 9-10 feet, Option ID :- 16,

Answer Given:- Not Attempted

Correct Answer :- 4-5 feet Option ID :- 15

Question ID:- 85

Which of the following is NOT included in vehicle insurance?

Options:-

▪ Loss or damage by accident or fire, Option ID :- 337,

▪ Liability for third-party injury or death, Option ID :- 338,

▪ Loss or damage to electric accessories on payment of additional premium, Option ID :- 339,

▪ Consequential loss, depreciation, or mechanical breakdown, Option ID :- 340,

Answer Given:- Not Attempted

Correct Answer :- Consequential loss, depreciation, or mechanical breakdown Option ID :- 340

Question ID:- 66

Which section of the Motor Vehicle Act, gives the power to a police officer in uniform, to arrest a person without a warrant, who commits an offence punishable under section 184, section 185, or section 197, in his presence?

Options:-

▪ Section 202, Option ID :- 261,

▪ Section 102, Option ID :- 262,

▪ Section 92, Option ID :- 263,

▪ Section 82, Option ID :- 264,

Answer Given:- Not Attempted

Correct Answer :- Section 202 Option ID :- 261

Question ID:- 26

Which of the following gives correct information about the basic scheme adopted for road signs?

Options:-

▪ Blue circles give mandatory instructions., Option ID :- 101,

▪ Red rectangles are used for information signs., Option ID :- 102,

▪ All triangular signs are blue., Option ID :- 103,

▪ All mandatory road signs are circular with red borders., Option ID :- 104,

Answer Given:- All mandatory road signs are circular with red borders., Option ID :- 104

Correct Answer :- Blue circles give mandatory instructions. Option ID :- 101

Question ID:- 20

What does this road sign indicate?



Options:-

▪ Slippery road, Option ID :- 77,

- Steep descent, Option ID :- 78,
- Loose gravel, Option ID :- 79,
- River bank, Option ID :- 80,

Answer Given:- Loose gravel, Option ID : -79

Correct Answer :- Loose gravel Option ID :- 79

Question ID:- 21

Which of the following is a cautionary road sign?

Options:-



▪ ,
Option ID :- 81,



▪ ,
Option ID :- 82,



▪ ,
Option ID :- 83,



▪ ,
Option ID :- 84,



Answer Given:- , Option ID : -81



Correct Answer :- Option ID :- 81

Question ID:- 69

Which of the following is released to the atmosphere when hydrocarbons and nitrogen oxides react with sunlight?

Options:-

- Particulate matter, Option ID :- 273,
- Hazardous air pollutants, Option ID :- 274,
- Ozone, Option ID :- 275,
- Sulphur dioxide, Option ID :- 276,

Answer Given:- Not Attempted

Correct Answer :- Ozone Option ID :- 275

Question ID:- 17

What does this road sign stand for?



Options:-

- Length limit, Option ID :- 65,
- Height limit, Option ID :- 66,
- Width limit, Option ID :- 67,
- Speed limit, Option ID :- 68,

Answer Given:- Length limit, Option ID : -65

Correct Answer :- Length limit Option ID :- 65

Question ID:- 73

Which of the following gases is mainly responsible for the formation of highly corrosive smog and acidic rain?

Options:-

- Nitrogen oxides, Option ID :- 289,
- Carbon dioxide, Option ID :- 290,
- Hydrogen chloride, Option ID :- 291,
- Ozone, Option ID :- 292,

Answer Given:- Not Attempted

Correct Answer :- Nitrogen oxides Option ID :- 289

Question ID:- 114

What does this dashboard symbol indicate?



Options:-

- Central lubrication, Option ID :- 453,
- Parking lamps, Option ID :- 454,
- Engine coolant temperature, Option ID :- 455,
- Moisture in the fuel system, Option ID :- 456,

Answer Given:- Engine coolant temperature, Option ID :- 455

Correct Answer :- Engine coolant temperature Option ID :- 455

Question ID:- 71

Which of the following is NOT an air pollutant according to the National Air Quality Programme?

Options:-

- Sulphur dioxide, Option ID :- 281,
- Nitrogen oxides, Option ID :- 282,
- Respirable suspended particulate matter, Option ID :- 283,
- Hydrogen peroxide, Option ID :- 284,

Answer Given:- Not Attempted

Correct Answer :- Hydrogen peroxide Option ID :- 284

Question ID:- 65

What does section 189 of chapter XIII, dealing with offences and penalties, mention as a punishable act?

Options:-

- Driving at excessive speed, Option ID :- 257,

- Racing and trial of speed, Option ID :- 258,
- Driving dangerously, Option ID :- 259,
- Drunken driving, Option ID :- 260,

Answer Given:- Not Attempted

Correct Answer :- Racing and trial of speed Option ID :- 258

Question ID:- 24

What does this road sign indicate?



Options:-

- Narrow bridge, Option ID :- 93,
- Road widens ahead, Option ID :- 94,
- Narrow road ahead, Option ID :- 95,
- Gap in median, Option ID :- 96,

Answer Given:- Road widens ahead, Option ID :- 94

Correct Answer :- Road widens ahead Option ID :- 94

Question ID:- 117

Which one of them is not one of the main goals of first aid?

Options:-

- preserve life, Option ID :- 465,
- prevent further illness / injury, Option ID :- 466,
- heal the patient, Option ID :- 467,
- promote recovery, Option ID :- 468,

Answer Given:- prevent further illness / injury, Option ID :- 466

Correct Answer :- heal the patient Option ID :- 467

Question ID:- 106

Which grade differential gear oil is used to maintain high viscosity at extreme pressure?

Options:-

- API GL-4 or 5, Option ID :- 421,
- API GL-3 or 4, Option ID :- 422,
- API GL-2 or 3, Option ID :- 423,
- API GL-5 or 6, Option ID :- 424,

Answer Given:- API GL-5 or 6, Option ID :- 424

Correct Answer :- API GL-4 or 5 Option ID :- 421

Question ID:- 6

In which sub-phase of the "Manoeuvre" phase, does the decision to proceed or wait have to be made?

Options:-

- Act, Option ID :- 21,

- Position, Option ID :- 22,
- Look for blind spots, Option ID :- 23,
- Speed, Option ID :- 24,

Answer Given:- Not Attempted

Correct Answer :- Look for blind spots Option ID :- 23

Question ID:- 10464

As per the Motor Vehicle Act, 1988, which of the following is categorised under the power of the State Government to make rules?

Options:-

- The badges and uniforms to be worn by the drivers of transport vehicles. , Option ID :- 11853,
- Specifications related to e-cart and e-rickshaw. , Option ID :- 11854,
- The curriculum of training modules , Option ID :- 11855,
- The form and manner in which a licensing authority issues a learner's licence. , Option ID :- 11856,

Answer Given:- Specifications related to e-cart and e-rickshaw. , Option ID : -11854

Correct Answer :- The badges and uniforms to be worn by the drivers of transport vehicles. Option ID :- 11853

Question ID:- 10470

When a motor car is involved in an accident, then the driver must report it to the nearest police station within _____ hours.

Options:-

- 8 , Option ID :- 11877,
- 12 , Option ID :- 11878,
- 24 , Option ID :- 11879,
- 48 , Option ID :- 11880,

Answer Given:- 24 , Option ID : -11879

Correct Answer :- 24 Option ID :- 11879

Question ID:- 10463

Which section of the Motor Vehicle Act 1988 defines a "driving licence"?

Options:-

- Section 2(7) , Option ID :- 11849,
- Section 2(11) , Option ID :- 11850,
- Section 2(10) , Option ID :- 11851,
- Section 2(14) , Option ID :- 11852,

Answer Given:- Not Attempted

Correct Answer :- Section 2(10) Option ID :- 11851

Question ID:- 58

Which chapter of the Motor Vehicle Act deals with the rules related to the control of traffic?

Options:-

- Chapter VI, Option ID :- 229,
- Chapter VII, Option ID :- 230,
- Chapter VIII, Option ID :- 231,

▪ Chapter V, Option ID :- 232,
Answer Given:- Not Attempted
Correct Answer :- Chapter VIII Option ID :- 231

Question ID:- 99

What is the shape of the connecting rod?

Options:-

- I , Option ID :- 393,
- U, Option ID :- 394,
- V , Option ID :- 395,
- O, Option ID :- 396,

Answer Given:- I , Option ID : -393
Correct Answer :- I Option ID :- 393

Question ID:- 46

Under which act, has the penalty for drunken driving been increased from Rs. 2000 to Rs. 10000?

Options:-

- Motor Vehicle Act, 1988, Option ID :- 181,
- Motor Vehicles (Amendment) Act, 2000, Option ID :- 182,
- Motor Vehicles (Amendment) Bill, 2019, Option ID :- 183,
- Motor Vehicles (Amendment) Bill, 2016, Option ID :- 184,

Answer Given:- Motor Vehicles (Amendment) Bill, 2019, Option ID : -183
Correct Answer :- Motor Vehicles (Amendment) Bill, 2016 Option ID :- 184

Question ID:- 115

In which of the following conditions, does this symbol flash on the dashboard?



Options:-

- Unfastened safety belt, Option ID :- 457,
- Opening of an airbag, Option ID :- 458,
- Child seat, Option ID :- 459,
- Doors ajar, Option ID :- 460,

Answer Given:- Unfastened safety belt, Option ID : -457
Correct Answer :- Unfastened safety belt Option ID :- 457

Question ID:- 108

Which of the following is a part of the starting system of a vehicle?

Options:-

- Ignition switch, Option ID :- 429,
- Drive belt, Option ID :- 430,
- Voltage regulator, Option ID :- 431,
- Alternator, Option ID :- 432,

Answer Given:- Ignition switch, Option ID : -429

Correct Answer :- Ignition switch Option ID :- 429

Question ID:- 37

Which of the following is a hand signal for "allowing overtaking"?

Options:-



Option ID :- 145,



Option ID :- 146,



Option ID :- 147,



Option ID :- 148,



Answer Given:- , Option ID : -148



Correct Answer :- Option ID :- 148

Question ID:- 44

What is the punishment for repeating drunken driving within 3 years of the first offence, according to the Motor Vehicle Act, 1988?

Options:-

- Two years of imprisonment/3000 rupees fine, Option ID :- 173,
- Three months of imprisonment/2000 rupees fine, Option ID :- 174,
- One year of imprisonment/5000 rupees fine, Option ID :- 175,
- Three years of imprisonment/3000 rupees fine, Option ID :- 176,

Answer Given:- Three months of imprisonment/2000 rupees fine, Option ID : -174

Correct Answer :- Two years of imprisonment/3000 rupees fine Option ID :- 173

Question ID:- 10457

Which of the following are three basic types of traffic signs?

Options:-

- signs that give orders , Option ID :- 11825,
- signs that warn , Option ID :- 11826,
- signs that give information , Option ID :- 11827,
- All of these , Option ID :- 11828,

Answer Given:- All of these , Option ID : -11828

Correct Answer :- All of these Option ID :- 11828

Question ID:- 120

When fuel is being filled in the car, which of the activities must you NOT do?

Options:-

- Smoke in the car, Option ID :- 477,
- Fiddle with the lights of the car, Option ID :- 478,
- Sit and wait for the fuel to be filled, Option ID :- 479,
- Stand outside the car, Option ID :- 480,

Answer Given:- Smoke in the car, Option ID : -477

Correct Answer :- Smoke in the car Option ID :- 477

Question ID:- 61

What does chapter IX of the Motor Vehicle Act deal with?

Options:-

- Liability without fault in certain cases, Option ID :- 241,
- Motor vehicles temporarily leaving or visiting India, Option ID :- 242,
- Insurance of motor vehicles against third-party risks, Option ID :- 243,
- Construction, equipment, and maintenance of motor vehicles, Option ID :- 244,

Answer Given:- Insurance of motor vehicles against third-party risks, Option ID : -243

Correct Answer :- Motor vehicles temporarily leaving or visiting India Option ID :- 242

Question ID:- 97

Which vehicle's body is fixed to the chassis with the help of I or U-bolts with rubber packings between the chassis and body cross members?

Options:-

- Car, Option ID :- 385,
- Bus, Option ID :- 386,

▪ Truck, Option ID :- 387,

▪ Bike, Option ID :- 388,

Answer Given:- Bus, Option ID : -386

Correct Answer :- Truck Option ID :- 387

Question ID:- 74

Which of the following should be avoided to reduce vehicular pollution?

Options:-

▪ Public transit, Option ID :- 293,

▪ Carpool, Option ID :- 294,

▪ Idling, Option ID :- 295,

▪ Alternative fuel use, Option ID :- 296,

Answer Given:- Carpool, Option ID : -294

Correct Answer :- Idling Option ID :- 295

Question ID:- 22

Which of the following road signs is NOT found on national highways?

Options:-



▪ Option ID :- 85,



▪ Option ID :- 86,



▪ Option ID :- 87,



▪ Option ID :- 88,



Answer Given:- , Option ID : -88



Correct Answer :- Option ID :- 88

Question ID:- 9

In India, what is the maximum speed per hour in kilometres

for M1 category vehicles on four-lane or more than 4-lane roads with dividers?

Options:-

- 100, Option ID :- 33,
- 120, Option ID :- 34,
- 80, Option ID :- 35,
- 90, Option ID :- 36,

Answer Given:- 80, Option ID : -35

Correct Answer :- 100 Option ID :- 33

Question ID:- 31

Which line is painted before a zebra crossing?

Options:-

- Give way line, Option ID :- 121,
- Barrier line, Option ID :- 122,
- Stop line, Option ID :- 123,
- Lane separators, Option ID :- 124,

Answer Given:- Stop line, Option ID : -123

Correct Answer :- Stop line Option ID :- 123

Question ID:- 86

Which of the following is allowed for an applicant of a learner's licence who is under the age of 18 years?

Options:-

- Motorcycle without gear, Option ID :- 341,
- Motor vehicle, Option ID :- 342,
- Transport vehicle, Option ID :- 343,
- Motorcycle with gear, Option ID :- 344,

Answer Given:- Motorcycle without gear, Option ID : -341

Correct Answer :- Motorcycle without gear Option ID :- 341

Question ID:- 78

What is the form to apply for registering a motor vehicle?

Options:-

- Form 20, Option ID :- 309,
- Form 11, Option ID :- 310,
- Form 33, Option ID :- 311,
- Form 40, Option ID :- 312,

Answer Given:- Form 20, Option ID : -309

Correct Answer :- Form 20 Option ID :- 309

Question ID:- 90

In which chapter of the Central Motor Vehicles Rules, 1989, is the "insurance of motor vehicles against third party risks" included?

Options:-

- Chapter III, Option ID :- 357,
- Chapter VII, Option ID :- 358,

▪ Chapter I, Option ID :- 359,

▪ Chapter V, Option ID :- 360,

Answer Given:- Chapter III, Option ID : -357

Correct Answer :- Chapter VII Option ID :- 358

Question ID:- 10468

With respect to applying for a driving licence, Form 6 A stands for which one of the following categories?

Options:-

▪ Medical certificate , Option ID :- 11869,

▪ International driving permit , Option ID :- 11870,

▪ State register of driving licence , Option ID :- 11871,

▪ Accreditation for driving training centre , Option ID :- 11872,

Answer Given:- Accreditation for driving training centre , Option ID : -11872

Correct Answer :- Medical certificate Option ID :- 11869

Question ID:- 84

Which of the following is a mandatory document to be submitted for renewal of RC, duplicate RC, and grant of No Objection Certificate?

Options:-

▪ Insurance certificate, Option ID :- 333,

▪ Tax clearance certificate, Option ID :- 334,

▪ Address proof, Option ID :- 335,

▪ Passport size photograph, Option ID :- 336,

Answer Given:- Insurance certificate, Option ID : -333

Correct Answer :- Insurance certificate Option ID :- 333

Question ID:- 70

Which of the following is a colourless and odourless gas, formed by the combustion of fossil fuels, such as gasoline?

Options:-

▪ Nitrogen oxide, Option ID :- 277,

▪ Carbon monoxide, Option ID :- 278,

▪ Ozone, Option ID :- 279,

▪ Sulphur dioxide, Option ID :- 280,

Answer Given:- Not Attempted

Correct Answer :- Carbon monoxide Option ID :- 278

Question ID:- 79

Which of the following acts as a repository of vehicle registration certificates and driving licence records?

Options:-

▪ National Register, Option ID :- 313,

▪ National Permit , Option ID :- 314,

▪ National Vehicles, Option ID :- 315,

▪ National Licence, Option ID :- 316,

Answer Given:- National Vehicles, Option ID : -315

Correct Answer :- National Register Option ID :- 313

Question ID:- 113

The crack or blister on the buttress of a tyre can be categorised under which of the following types of tyre defects?

Options:-

- Tread defects, Option ID :- 449,
- Bead defects, Option ID :- 450,
- Sidewall defects, Option ID :- 451,
- Carcass defects, Option ID :- 452,

Answer Given:- Bead defects, Option ID : -450

Correct Answer :- Sidewall defects Option ID :- 451

Question ID:- 12

What should be done to reduce the glare from oncoming vehicles while driving at night?

Options:-

- Use high-beam lights to counteract the glare., Option ID :- 45,
- Let someone else drive for some time., Option ID :- 46,
- Talk to the passengers., Option ID :- 47,
- Concentrate on the left-side marking on the road., Option ID :- 48,

Answer Given:- Concentrate on the left-side marking on the road., Option ID : -48

Correct Answer :- Concentrate on the left-side marking on the road. Option ID :- 48

Question ID:- 27

What does this traffic police hand signal indicate?

**Options:-**

- To stop vehicles approaching from the front and behind simultaneously., Option ID :- 105,
- To beckon vehicles approaching from left., Option ID :- 106,
- To stop vehicles approaching from the left and waiting to turn right., Option ID :- 107,
- Warning signal closing all vehicles., Option ID :- 108,

Answer Given:- To beckon vehicles approaching from left., Option ID : -106

Correct Answer :- To stop vehicles approaching from the left and waiting to turn right. Option ID :- 107

Question ID:- 100

What is the name of the part which converts the reciprocating motion of the piston into the rotary motion of the crankshaft?

Options:-

- Cylinder, Option ID :- 397,
- Connecting rod, Option ID :- 398,

- Piston pin, Option ID :- 399,
 - Valve spring, Option ID :- 400,
- Answer Given:- Valve spring, Option ID : -400**
Correct Answer :- Connecting rod Option ID :- 398

Question ID:- 10460

What does the "amber" light indicate?



Options:-

- Stop , Option ID :- 11837,
 - Be alert , Option ID :- 11838,
 - Go , Option ID :- 11839,
 - Slow down , Option ID :- 11840,
- Answer Given:- Slow down , Option ID : -11840**
Correct Answer :- Be alert Option ID :- 11838

Question ID:- 93

Which of the following is included in the inspection of the vehicle's structure?

Options:-

- Steering system, Option ID :- 369,
 - Drive system, Option ID :- 370,
 - Condition of the chassis frame, Option ID :- 371,
 - Braking system, Option ID :- 372,
- Answer Given:- Condition of the chassis frame, Option ID : -371**
Correct Answer :- Condition of the chassis frame Option ID :- 371

Question ID:- 36

Which line indicates that parking is not allowed on the roadside?

Options:-

- Blue line, Option ID :- 141,
 - Yellow line, Option ID :- 142,
 - White line, Option ID :- 143,
 - Red line, Option ID :- 144,
- Answer Given:- Yellow line, Option ID : -142**
Correct Answer :- Yellow line Option ID :- 142

Question ID:- 10461

In which direction, the vehicle is allowed to turn at the red signal by default, unless specified otherwise?

Options:-

- No turn is allowed , Option ID :- 11841,
- Left turn , Option ID :- 11842,

▪ Right turn , Option ID :- 11843,

▪ U-turn , Option ID :- 11844,

Answer Given:- No turn is allowed , Option ID : -11841

Correct Answer :- Left turn Option ID :- 11842

Question ID:- 68

Which of the following activities leads to pollution due to motor vehicles?

Options:-

▪ Use of multi-toned or air horns in the vehicle., Option ID :- 269,

▪ Use of horn in emergencies., Option ID :- 270,

▪ Maintenance of the exhaust silencer., Option ID :- 271,

▪ Replacement of the old battery with a new battery when required., Option ID :- 272,

Answer Given:- Maintenance of the exhaust silencer., Option ID : -271

Correct Answer :- Use of multi-toned or air horns in the vehicle. Option ID :- 269

Question ID:- 88

What is the total number of input characters to write a driving licence number in India (including a space or a hyphen)?

Options:-

▪ 10, Option ID :- 349,

▪ 13, Option ID :- 350,

▪ 16, Option ID :- 351,

▪ 19, Option ID :- 352,

Answer Given:- 13, Option ID : -350

Correct Answer :- 16 Option ID :- 351

Question ID:- 103

Which type of clutch suffers from the drawbacks of overheating risks and high initial costs?

Options:-

▪ Centrifugal clutch, Option ID :- 409,

▪ Electromagnetic clutch, Option ID :- 410,

▪ Cone clutch, Option ID :- 411,

▪ Multi-plate clutch, Option ID :- 412,

Answer Given:- Not Attempted

Correct Answer :- Electromagnetic clutch Option ID :- 410

Question ID:- 80

Which of the following contains correct information about the Digi-locker or m-Parivahan platform?

Options:-

▪ The documents available in these apps are valid., Option ID :- 317,

▪ The documents available in these apps are not valid., Option ID :- 318,

▪ Fine is applicable for a person not producing the physical documents., Option ID :- 319,

▪ These are not verified authenticated digital document provider applications., Option ID :- 320,

Answer Given:- The documents available in these apps are valid., Option ID : -317
Correct Answer :- The documents available in these apps are valid. Option ID :- 317

Question ID:- 11

Which of the following is advisable for a driver during foggy conditions?

Options:-

- Turn on only the fog lights., Option ID :- 41,
- Go near the vehicle in front of your vehicle., Option ID :- 42,
- Maintain a constant speed., Option ID :- 43,
- Use emergency blinking lights., Option ID :- 44,

Answer Given:- Turn on only the fog lights., Option ID : -41

Correct Answer :- Use emergency blinking lights. Option ID :- 44

Question ID:- 60

Which section of chapter XIII deals with the penalty imposed on allowing unauthorised persons to drive vehicles?

Options:-

- Section 177, Option ID :- 237,
- Section 180, Option ID :- 238,
- Section 183, Option ID :- 239,
- Section 188, Option ID :- 240,

Answer Given:- Section 180, Option ID : -238

Correct Answer :- Section 180 Option ID :- 238

Question ID:- 63

Which of the following is discussed in Section 215 of the Motor Vehicle Act?

Options:-

- Offences related to licences., Option ID :- 249,
- Road Safety councils and committees., Option ID :- 250,
- Appeals., Option ID :- 251,
- Claims tribunals., Option ID :- 252,

Answer Given:- Not Attempted

Correct Answer :- Road Safety councils and committees. Option ID :- 250

Question ID:- 47

What is one of the methods to clear the airway of an accident victim?

Options:-

- Tilt the head back and point the face slightly down., Option ID :- 185,
- Mouth-to-mouth seal., Option ID :- 186,
- Uncover the bleeding wound., Option ID :- 187,
- Elevate bleeding limbs., Option ID :- 188,

Answer Given:- Tilt the head back and point the face slightly down., Option ID : -185

Correct Answer :- Tilt the head back and point the face slightly down. Option ID :- 185

Question ID:- 19

Which of the following road sign indicates the driver to drive in the left lane?

Options:-



▪ ,
Option ID :- 73,



▪ ,
Option ID :- 74,



▪ ,
Option ID :- 75,



▪ ,
Option ID :- 76,

Answer Given:-  , **Option ID : -76**

Correct Answer :-  **Option ID :- 76**

Question ID:- 10462

From which of the following the driver get distracted while driving on road?

Options:-

- **Adjusting mirrors while driving , Option ID :- 11845,**
- **Animals on road , Option ID :- 11846,**
- **Eating and drinking while driving , Option ID :- 11847,**
- **All of these , Option ID :- 11848,**

Answer Given:- All of these , Option ID : -11848

Correct Answer :- All of these Option ID :- 11848

Question ID:- 10465

As per the Motor Vehicles Act 1988, which of the following is NOT a criterion for disqualifying the grant of a conductor's licence?

Options:-

- **Age , Option ID :- 11857,**
- **Gender , Option ID :- 11858,**
- **Educational qualification , Option ID :- 11859,**
- **Physical fitness , Option ID :- 11860,**

Answer Given:- Educational qualification , Option ID : -11859

Correct Answer :- Gender Option ID :- 11858

Question ID:- 64

Which chapter of the Motor Vehicle Act deals with the grant of a learner's licence?

Options:-

- **Chapter II, Option ID :- 253,**
- **Chapter I, Option ID :- 254,**
- **Chapter IV, Option ID :- 255,**
- **Chapter III, Option ID :- 256,**

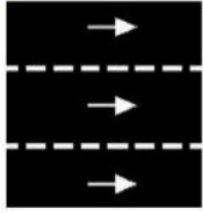
Answer Given:- Not Attempted

Correct Answer :- Chapter II Option ID :- 253

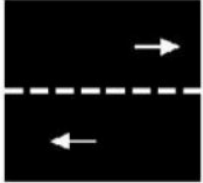
Question ID:- 34

Which of the following road marks indicate "lane separators"?

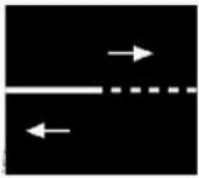
Options:-



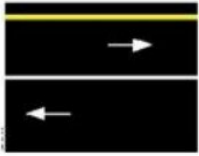
Option ID :- 133,



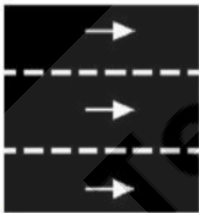
Option ID :- 134,



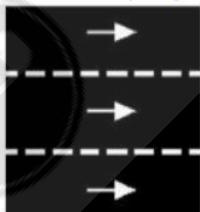
Option ID :- 135,



Option ID :- 136,



Answer Given:- , **Option ID :- 133**



Correct Answer :- **Option ID :- 133**

Question ID:- 3

Which of the following rules has the advantage of giving passage to emergency vehicles?

Options:-

- **Two Seconds Rule, Option ID :- 9,**
- **Tyre and Tarmac Rule, Option ID :- 10,**
- **MSM Rule, Option ID :- 11,**
- **Cutting Corners Rule, Option ID :- 12,**

Answer Given:- Not Attempted

Correct Answer :- Tyre and Tarmac Rule Option ID :- 10

Question ID:- 38

Why this hand signal is used while driving?





Options:-

▪ For slowing down, Option ID :- 149,

▪ For left turn, Option ID :- 150,

▪ For stopping, Option ID :- 151,

▪ For right turn, Option ID :- 152,

Answer Given:- For slowing down, Option ID : -149

Correct Answer :- For slowing down Option ID :- 149

Question ID:- 28

What is the signal for beckoning vehicles from the front?

Options:-



▪ , Option ID :- 109,



▪ , Option ID :- 110,



▪ , Option ID :- 111,



▪ , Option ID :- 112,



Answer Given:- , Option ID : -109



Correct Answer :- Option ID :- 112

Question ID:- 116

In which automotive vehicle is there a Diesel exhaust fluid;

selective catalytic reduction
(SCR) fluid indicator in place?

Options:-

- **Agricultural Tractor, Option ID :- 461,**
- **Bus, Option ID :- 462,**
- **Car, Option ID :- 463,**
- **Electric car, Option ID :- 464,**

Answer Given:- Agricultural Tractor, Option ID : -461

Correct Answer :- Agricultural Tractor Option ID :- 461

Question ID:- 33

Which road mark informs a driver that overtaking is not permitted?

Options:-

- **A broken line changes into a solid line, Option ID :- 129,**
- **A broken white line, Option ID :- 130,**
- **Some broken white lines, Option ID :- 131,**
- **Two continuous white lines in parallel, Option ID :- 132,**

Answer Given:- Two continuous white lines in parallel, Option ID : -132

Correct Answer :- Two continuous white lines in parallel Option ID :- 132

Question ID:- 112

Which of the following can be a possible cause of a defective bead in a tyre?

Options:-

- **Damaged curing ring, Option ID :- 445,**
- **Loose turn ups, Option ID :- 446,**
- **FM in tread ends, Option ID :- 447,**
- **Chafer set low, Option ID :- 448,**

Answer Given:- Damaged curing ring, Option ID : -445

Correct Answer :- Damaged curing ring Option ID :- 445

Question ID:- 109

In which type of electric vehicle, is the chemical energy of the fuel directly converted into electric energy?

Options:-

- **Plug-in hybrid electric vehicle, Option ID :- 433,**
- **Hybrid electric vehicle, Option ID :- 434,**
- **Battery electric vehicle, Option ID :- 435,**
- **Fuel cell electric vehicle, Option ID :- 436,**

Answer Given:- Battery electric vehicle, Option ID : -435

Correct Answer :- Fuel cell electric vehicle Option ID :- 436

Question ID:- 81

What is Form 51 issued by the Ministry of Road Transport and Highways, related to?

Options:-

- **Certificate of Fitness , Option ID :- 321,**
- **Certificate of Insurance , Option ID :- 322,**

- Pollution Under Control Certificate , Option ID :- 323,
 - State Register of Motor Vehicles , Option ID :- 324,
- Answer Given:- Certificate of Insurance , Option ID : -322**
Correct Answer :- Certificate of Insurance Option ID :- 322

Question ID:- 102

Which of the following is located on the fuel pump to transfer electrical signals into mechanical action?

Options:-

- Electro-magnetic actuators, Option ID :- 405,
- Electronic sensors, Option ID :- 406,
- Electronic control unit, Option ID :- 407,
- Fuel Injector, Option ID :- 408,

Answer Given:- Not Attempted

Correct Answer :- Electro-magnetic actuators Option ID :- 405

Question ID:- 8

Which of the following is NOT a crucial factor on which the safe speed of a driver depends upon?

Options:-

- Road condition, Option ID :- 29,
- Driver's condition, Option ID :- 30,
- Vehicle's condition, Option ID :- 31,
- Traveller's condition, Option ID :- 32,

Answer Given:- Not Attempted

Correct Answer :- Traveller's condition Option ID :- 32

Question ID:- 13

Which of the following does NOT help to reduce fatigue during night driving?

Options:-

- Have a cup of coffee., Option ID :- 49,
- Use dipped headlights., Option ID :- 50,
- Listen to the radio., Option ID :- 51,
- Stop at a safe place and sleep for a while., Option ID :- 52,

Answer Given:- Not Attempted

Correct Answer :- Use dipped headlights. Option ID :- 50

Question ID:- 50

What should be avoided in the case of injuries to muscle joints or bones?

Options:-

- Apply ice packs, Option ID :- 197,
- Put a splint on the injured limb, Option ID :- 198,
- Shift the injured to the hospital, Option ID :- 199,
- Make the injured person lean forward, Option ID :- 200,

Answer Given:- Make the injured person lean forward, Option ID : -200

Correct Answer :- Make the injured person lean forward Option ID :- 200

Question ID:- 10466

As per the Motor Vehicles Act 1988, for a vehicle registered outside the State, what is the time duration for the transferor to forward the NOC to the registering authority?

Options:-

- 20 days , Option ID :- 11861,
- 25 days , Option ID :- 11862,
- 45 days , Option ID :- 11863,
- 2 days , Option ID :- 11864,

Answer Given:- 45 days , Option ID : -11863

Correct Answer :- 45 days Option ID :- 11863

Question ID:- 53

What is the name of the motor car having an unladen weight of not more than 7500 kilograms?

Options:-

- Medium good vehicle, Option ID :- 209,
- Light motor vehicle, Option ID :- 210,
- Heavy passenger motor vehicle, Option ID :- 211,
- Medium passenger motor vehicle, Option ID :- 212,

Answer Given:- Light motor vehicle, Option ID : -210

Correct Answer :- Light motor vehicle Option ID :- 210

Question ID:- 10469

For applicants above the age of 40 years, which form needs to be filled while furnishing a medical certificate for a new driving license?

Options:-

- Form 1 , Option ID :- 11873,
- Form 1 A , Option ID :- 11874,
- Form 5 , Option ID :- 11875,
- Form 5 A , Option ID :- 11876,

Answer Given:- Form 1 , Option ID : -11873

Correct Answer :- Form 1 A Option ID :- 11874

Question ID:- 45

Which section of the Motor Vehicles Act permits the breath test of a driver suspected of drunken driving?

Options:-

- Section 204, Option ID :- 177,
- Section 201, Option ID :- 178,
- Section 203, Option ID :- 179,
- Section 205, Option ID :- 180,

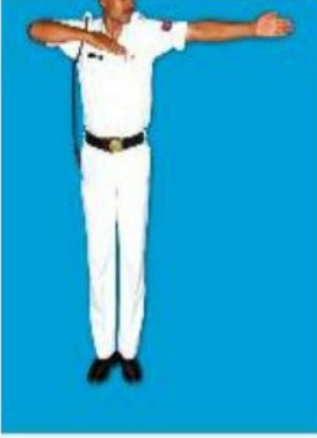
Answer Given:- Not Attempted

Correct Answer :- Section 203 Option ID :- 179

Question ID:- 29

What does the given image signify?





Options:-

- To give VIP salute., Option ID :- 113,
- To start vehicles on T-point., Option ID :- 114,
- To allow vehicles coming from the left., Option ID :- 115,
- To allow vehicles coming from the right., Option ID :- 116,

Answer Given:- To allow vehicles coming from the right., Option ID : -116

Correct Answer :- To give VIP salute. Option ID :- 113

Question ID:- 91

To which category, does the form related to the "cover note" belong?

Options:-

- Vehicles related, Option ID :- 361,
- Permit related, Option ID :- 362,
- Driving licence, Option ID :- 363,
- Motor vehicles dealer related, Option ID :- 364,

Answer Given:- Vehicles related, Option ID : -361

Correct Answer :- Vehicles related Option ID :- 361

Question ID:- 110

Which of the following implements the working principles of a battery electric vehicle technology?

Options:-

- Tata Tigor, Option ID :- 437,
- Ford Fusion Energi, Option ID :- 438,
- Kia Optima, Option ID :- 439,
- Hyundai Nexo, Option ID :- 440,

Answer Given:- Ford Fusion Energi, Option ID : -438

Correct Answer :- Tata Tigor Option ID :- 437

Question ID:- 95

Which of the following is NOT a part of the daily inspection of a vehicle?

Options:-

- Check the engine oil level, Option ID :- 377,
- Check the coolant level of the radiator, Option ID :- 378,
- Check the tyre pressure, Option ID :- 379,

▪ Check the brakes, Option ID :- 380,
Answer Given:- Check the brakes, Option ID : -380
Correct Answer :- Check the brakes Option ID :- 380

Question ID:- 5

What does the last "M" stand for in the "MSM Rule" of safe driving?

Options:-

- Measure, Option ID :- 17,
- Movement, Option ID :- 18,
- Manipulate, Option ID :- 19,
- Manoeuvre, Option ID :- 20,

Answer Given:- Manoeuvre, Option ID : -20
Correct Answer :- Manoeuvre Option ID :- 20

Question ID:- 43

What is the alcohol limit for a driver to be considered a drunk driver?

Options:-

- More than 20 mg per 100 ml, Option ID :- 169,
- Less than 25 mg per 100 ml, Option ID :- 170,
- More than 30 mg per 100 ml, Option ID :- 171,
- Less than 20 mg per 100 ml, Option ID :- 172,

Answer Given:- More than 30 mg per 100 ml, Option ID : -171
Correct Answer :- More than 30 mg per 100 ml Option ID :- 171

Question ID:- 10

Which of the following steps must be avoided during brake failure conditions?

Options:-

- Pumping hard the brake pedals several times., Option ID :- 37,
- Applying parking brakes slowly., Option ID :- 38,
- Driving the vehicle to the nearest garage., Option ID :- 39,
- Shifting the vehicle to the lower gear., Option ID :- 40,

Answer Given:- Shifting the vehicle to the lower gear., Option ID : -40
Correct Answer :- Driving the vehicle to the nearest garage. Option ID :- 39

Question ID:- 76

Which of the following is an example of alternative fuel, contributing to the reduction of vehicular pollution?

Options:-

- Ethanol, Option ID :- 301,
- Petrol, Option ID :- 302,
- Diesel, Option ID :- 303,
- Gasoline, Option ID :- 304,

Answer Given:- Petrol, Option ID : -302
Correct Answer :- Ethanol Option ID :- 301

Question ID:- 94

What does the inspection of the propulsion system of a

vehicle include?

Options:-

- Checking the smoke and noise emission levels, Option ID :- 373,
- Checking of tyres and road wheels, Option ID :- 374,
- Checking of seat belts, Option ID :- 375,
- Checking of horn and windscreen wipers, Option ID :- 376,

Answer Given:- Not Attempted

Correct Answer :- Checking the smoke and noise emission levels Option ID :- 373

Question ID:- 62

Which section of the Motor Vehicle Act deals with the issuance of the "No Objection Certificate"?

Options:-

- Section 42, Option ID :- 245,
- Section 44, Option ID :- 246,
- Section 46, Option ID :- 247,
- Section 48, Option ID :- 248,

Answer Given:- Not Attempted

Correct Answer :- Section 48 Option ID :- 248

Question ID:- 67

Which of the following should NOT be done to control vehicle pollution?

Options:-

- Maintenance of the recommended tyre pressure., Option ID :- 265,
- Extensive use of private vehicles instead of public transportation., Option ID :- 266,
- Cleaning of the carbon deposit from the silencer., Option ID :- 267,
- Keeping the fuel filter clean., Option ID :- 268,

Answer Given:- Extensive use of private vehicles instead of public transportation., Option ID :- 266

Correct Answer :- Extensive use of private vehicles instead of public transportation. Option ID :- 266

Question ID:- 101

Which body part provides air tight compartment to seal the combustible gases during power stroke?

Options:-

- Exhaust valve, Option ID :- 401,
- Inlet valve, Option ID :- 402,
- Valve spring, Option ID :- 403,
- Piston pin, Option ID :- 404,

Answer Given:- Exhaust valve, Option ID :- 401

Correct Answer :- Valve spring Option ID :- 403

Question ID:- 72

Which of the following is NOT a health hazard caused due to air pollution caused by vehicles?

Options:-

- Lung infection, Option ID :- 285,

- Cancer, Option ID :- 286,
 - Heart disease, Option ID :- 287,
 - Diarrhoea, Option ID :- 288,
- Answer Given:- Not Attempted**
Correct Answer :- Diarrhoea Option ID :- 288

Question ID:- 16

Which of the following is NOT a valid purpose of towing a vehicle?

Options:-

- To reach the nearest filling station, Option ID :- 61,
 - To reach the nearest garage, Option ID :- 62,
 - To deliver something urgent, Option ID :- 63,
 - To park it on the roadside, Option ID :- 64,
- Answer Given:- To park it on the roadside, Option ID : -64**
Correct Answer :- To park it on the roadside Option ID :- 64

Question ID:- 25

Which road sign informs the driver about a restricted forward movement?

Options:-

- Staggered intersection, Option ID :- 97,
 - Y-intersection, Option ID :- 98,
 - T-intersection, Option ID :- 99,
 - Round about, Option ID :- 100,
- Answer Given:- Staggered intersection, Option ID : -97**
Correct Answer :- T-intersection Option ID :- 99

Question ID:- 111

Which of the following is NOT contained in a standard job card?

Options:-

- Name of the mechanic, Option ID :- 441,
 - Signature of the mechanic, Option ID :- 442,
 - Signature of the customer, Option ID :- 443,
 - Name of the supervisor, Option ID :- 444,
- Answer Given:- Signature of the mechanic, Option ID : -442**
Correct Answer :- Signature of the mechanic Option ID :- 442

Question ID:- 59

Which chapter deals with the scheme for renting motor cabs?

Options:-

- Chapter III, Option ID :- 233,
 - Chapter IV, Option ID :- 234,
 - Chapter VII, Option ID :- 235,
 - Chapter V, Option ID :- 236,
- Answer Given:- Not Attempted**

Correct Answer :- Chapter V Option ID :- 236

Question ID:- 51

What is required for a driver to be physically fit to drive?

Options:-

- Have a good and clear vision of the road, Option ID :- 201,
- Carry a fully equipped tool kit, Option ID :- 202,
- Have a valid driving licence, Option ID :- 203,
- Use the seatbelt, Option ID :- 204,

Answer Given:- Have a good and clear vision of the road, Option ID : -201

Correct Answer :- Have a good and clear vision of the road Option ID :- 201

Question ID:- 105

Which type of lubrication system is used in all the engines equipped with semi-floating piston pins?

Options:-

- Splash system, Option ID :- 417,
- Force feed system, Option ID :- 418,
- Full force feed system, Option ID :- 419,
- Combined splash and force feed system, Option ID :- 420,

Answer Given:- Not Attempted

Correct Answer :- Force feed system Option ID :- 418

Question ID:- 52

Which of the following options defines an "articulated vehicle"?

Options:-

- A motor vehicle constructed to carry more than six passengers., Option ID :- 205,
- A motor vehicle other than a transport vehicle., Option ID :- 206,
- A motor vehicle used to carry passengers for hire., Option ID :- 207,
- A motor vehicle to which a semi-trailer is attached., Option ID :- 208,

Answer Given:- A motor vehicle to which a semi-trailer is attached., Option ID : -208

Correct Answer :- A motor vehicle to which a semi-trailer is attached. Option ID :- 208

Question ID:- 49

Which of the following is NOT a part of a small first aid kit box?

Options:-

- Paracetamol tablets, Option ID :- 193,
- Adhesive plaster, Option ID :- 194,
- Sterilised eye pads, Option ID :- 195,
- ORS sachets, Option ID :- 196,

Answer Given:- Adhesive plaster, Option ID : -194

Correct Answer :- Sterilised eye pads Option ID :- 195

Question ID:- 40

What does a "flashing" red signal indicate?

Options:-

- Completely stop and proceed when the road is safe and clear., Option ID :- 157,
- Slow down and proceed with caution., Option ID :- 158,
- Go through the intersection carefully., Option ID :- 159,
- Be ready to go., Option ID :- 160,

Answer Given:- Completely stop and proceed when the road is safe and clear., Option ID : -157

Correct Answer :- Completely stop and proceed when the road is safe and clear. Option ID :- 157

Question ID:- 2

What is the "Two Seconds Rule" to maintain a reasonable distance between your vehicle and your front vehicle?

Options:-

- Two seconds timing to reach the vehicle in front of you, Option ID :- 5,
- Two seconds timing to come out of the vehicle, Option ID :- 6,
- Two seconds timing to see the rear wheels of the front vehicle , Option ID :- 7,
- None of these, Option ID :- 8,

Answer Given:- None of these, Option ID : -8

Correct Answer :- Two seconds timing to reach the vehicle in front of you Option ID :- 5

Question ID:- 10458

What are these lines known as?



Options:-

- Stop line , Option ID :- 11829,
- Give way line , Option ID :- 11830,
- Zebra crossing , Option ID :- 11831,
- Pedestrian crossing , Option ID :- 11832,

Answer Given:- Give way line , Option ID : -11830

Correct Answer :- Give way line Option ID :- 11830

Question ID:- 14

What is the ideal distance between the rear of the front vehicle and the front of the rear vehicle while being towed?

Options:-

- 5 metres, Option ID :- 53,
- 6 metres, Option ID :- 54,
- 4 metres, Option ID :- 55,
- 7 metres, Option ID :- 56,

Answer Given:- 5 metres, Option ID : -53

Correct Answer :- 5 metres Option ID :- 53

Question ID:- 48

What should be the first aid in case of chest or abdomen injury?

Options:-

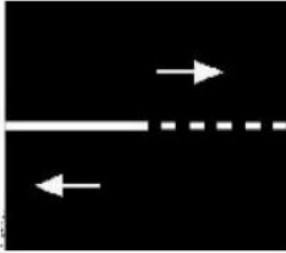
- Cover the wound with a wet clean cloth, Option ID :- 189,
- Apply direct pressure on the wound, Option ID :- 190,
- Raise the injured part of the body, Option ID :- 191,
- Give the patient something to eat or drink, Option ID :- 192,

Answer Given:- Apply direct pressure on the wound, Option ID : -190

Correct Answer :- Cover the wound with a wet clean cloth Option ID :- 189

Question ID:- 35

What does this road marking indicate?



Options:-

- Continuous to broken line allows lane changing, Option ID :- 137,
- Broken to continuous line allows parking, Option ID :- 138,
- Continuous to broken line does not allow lane changing, Option ID :- 139,
- Broken to continuous line does not allow parking, Option ID :- 140,

Answer Given:- Broken to continuous line does not allow parking, Option ID : -140

Correct Answer :- Continuous to broken line allows lane changing Option ID :- 137

Question ID:- 83

Which of the following requires a valid insurance certificate to be submitted?

Options:-

- Change of address in the registration certificate, Option ID :- 329,
- Transfer of ownership on the registration certificate, Option ID :- 330,
- Hypothecation termination, Option ID :- 331,
- Hypothecation addition, Option ID :- 332,

Answer Given:- Not Attempted

Correct Answer :- Transfer of ownership on the registration certificate Option ID :- 330

Question ID:- 15

What should be the maximum speed of a motor vehicle towing another vehicle other than a trailer?

Options:-

- 20 kilometres per hour, Option ID :- 57,
- 24 kilometres per hour, Option ID :- 58,
- 30 kilometres per hour, Option ID :- 59,
- 25 kilometres per hour, Option ID :- 60,

Answer Given:- 24 kilometres per hour, Option ID : -58

Correct Answer :- 24 kilometres per hour Option ID :- 58

Question ID:- 98

Which component of an IC engine holds the combustion chamber?

Options:-

- Cylinder, Option ID :- 389,
- Piston, Option ID :- 390,
- Cylinder head, Option ID :- 391,
- Crankshaft, Option ID :- 392,

Answer Given:- Cylinder, Option ID : -389

Correct Answer :- Cylinder head Option ID :- 391

Question ID:- 75

Which of the following is a principle to be followed while levying the Green Tax on vehicles to tackle pollution?

Options:-

- Transport vehicles older than 20 years, Option ID :- 297,
- Personal vehicles after 15 years, Option ID :- 298,
- Electric vehicles older than 3 years, Option ID :- 299,
- Farming vehicles older than 4 years, Option ID :- 300,

Answer Given:- Personal vehicles after 15 years, Option ID : -298

Correct Answer :- Personal vehicles after 15 years Option ID :- 298

