



Teachingninja.in



Latest Govt Job updates



Private Job updates



Free Mock tests available



Visit - teachingninja.in

OPTCL JMT

**Previous Year Paper
(Electrical)
05 May, 2023**





ଓଡ଼ିଶା ବିଦ୍ୟୁତ୍ ଶକ୍ତି ସଂଚାରଣ ନିଗମ ଲିଃ.
ODISHA POWER TRANSMISSION CORPORATION LIMITED

(A Government of Odisha Undertaking)
Regd. Office: Janpath, Bhubaneswar - 751022
CIN: U4102OR2004SGC007553

Connect us:  optcl.odisha

 OPTCL_Odisha

Website: www.optcl.co.in

Participant ID	
Participant Name	
Test Center Name	
Test Date	05/05/2023
Test Time	2:00 PM - 5:00 PM
Subject	JMT (Electrical) Initial Appointee

Section : Subject Knowledge

Q.1 If the transmission line is lossy, the characteristic impedance is _____.

- Ans
- ☒ 1. infinity
 - ☒ 2. complex number
 - ☒ 3. zero
 - ☒ 4. unity

Question ID : 630680214876

Option 1 ID : 630680833530

Option 2 ID : 630680833529

Option 3 ID : 630680833527

Option 4 ID : 630680833528

Status : Answered

Chosen Option : 2

Q.2 A 250 V lamp has a total flux of 1256 lumens and takes a current of 0.4 A. Calculate the MSCP per watt.

- Ans
- ☒ 1. 0.6
 - ☒ 2. 1.5
 - ☒ 3. 1
 - ☒ 4. 1.2

Question ID : 630680214924

Option 1 ID : 630680833719

Option 2 ID : 630680833722

Option 3 ID : 630680833720

Option 4 ID : 630680833721

Status : Answered

Chosen Option : 3

Q.3 Which of the following is needed when an adder is to be used as a subtractor?

- Ans
- ☐ 1. Ramp input
 - ☐ 2. Schmitt trigger
 - ☒ 3. Controlled inverter
 - ☐ 4. JK flipflop

Question ID : 630680214912

Option 1 ID : 630680833672

Option 2 ID : 630680833671

Option 3 ID : 630680833674

Option 4 ID : 630680833673

Status : Not Answered

Chosen Option : --

Q.4 In a series RL circuit, the voltages across resistor and inductor are 12 V and 5 V, respectively. Find the applied voltage.

- Ans
- ☐ 1. 17 V
 - ☐ 2. 15 V
 - ☐ 3. 7 V
 - ☒ 4. 13 V

Question ID : 630680214833

Option 1 ID : 630680833355

Option 2 ID : 630680833356

Option 3 ID : 630680833358

Option 4 ID : 630680833357

Status : Answered

Chosen Option : 4

Q.5 The cyclic irregularity of an alternator is measured as:

- Ans
- ☐ 1. $\frac{\text{Maximum speed} - \text{Minimum speed}}{\text{Maximum speed} - \text{Mean speed}}$
 - ☐ 2. $\frac{\text{Maximum speed} - \text{Minimum speed}}{\text{Minimum speed}}$
 - ☒ 3. $\frac{\text{Maximum speed} - \text{Minimum speed}}{\text{Mean speed}}$
 - ☐ 4. $\frac{\text{Maximum speed} - \text{Minimum speed}}{\text{Maximum speed}}$

Question ID : 630680214964

Option 1 ID : 630680833882

Option 2 ID : 630680833880

Option 3 ID : 630680833881

Option 4 ID : 630680833879

Status : Answered

Chosen Option : 4

Q.6 Strain gauge CANNOT be used for the measurement of:

- Ans
- ☐ 1. weight
 - ☒ 2. temperature
 - ☐ 3. force
 - ☐ 4. pressure

Question ID : 630680214872

Option 1 ID : 630680833513

Option 2 ID : 630680833514

Option 3 ID : 630680833512

Option 4 ID : 630680833511

Status : Answered

Chosen Option : 2

Q.7 Using Nyquist criterion, determine the stability of a feedback system with $G(s) = \frac{250}{s^2 + 4s + 50}$ and $H(s) = 1$.

- Ans
- ☐ 1. Unstable
 - ☐ 2. Conditional stable
 - ☐ 3. Marginally stable
 - ☒ 4. Stable

Question ID : 630680214963

Option 1 ID : 630680833876

Option 2 ID : 630680833878

Option 3 ID : 630680833877

Option 4 ID : 630680833875

Status : Not Answered

Chosen Option : --

Q.8 Due to the limitation of commutator DC generators are not usually designed beyond _____.

- Ans
- ☐ 1. 330 V
 - ☐ 2. 220 V
 - ☒ 3. 650 V
 - ☐ 4. 1000 V

Question ID : 630680214854

Option 1 ID : 630680833441

Option 2 ID : 630680833442

Option 3 ID : 630680833440

Option 4 ID : 630680833439

Status : Not Answered

Chosen Option : --

Q.9 Calculate the number of poles required to achieve a stepping angle of 2.5° in a 3-phase permanent magnet stepper motor.

- Ans**
- ☒ 1. 24
 - ☒ 2. 36
 - ☒ 3. 60
 - ☒ 4. 48

Question ID : 630680214905

Option 1 ID : 630680833643

Option 2 ID : 630680833644

Option 3 ID : 630680833646

Option 4 ID : 630680833645

Status : Not Answered

Chosen Option : --

Q.10 Which of the following are the two main components of a static VAR compensator?

- Ans**
- ☒ 1. Thyristor-controlled and thyristor-switched rectifier and thyristor-switched inductor
 - ☒ 2. Thyristor-controlled and thyristor-switched rectifier and thyristor-switched capacitor
 - ☒ 3. Thyristor-controlled and thyristor-switched reactor and thyristor-switched capacitor
 - ☒ 4. Thyristor-controlled and thyristor-switched reactor and thyristor-switched inductor

Question ID : 630680214934

Option 1 ID : 630680833762

Option 2 ID : 630680833761

Option 3 ID : 630680833759

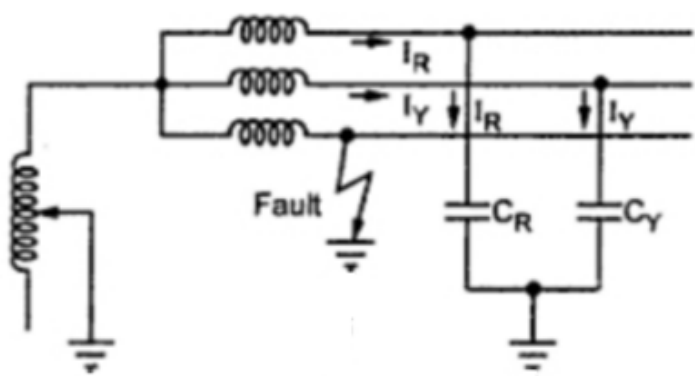
Option 4 ID : 630680833760

Status : Not Answered

Chosen Option : --



Q.11



Identify the grounding system shown in this figure.

- Ans
- ☐ 1. Solid grounding
 - ☐ 2. Resistance grounding
 - ☐ 3. Reactance grounding
 - ☒ 4. Resonant grounding

Question ID : 630680214953
Option 1 ID : 630680833838
Option 2 ID : 630680833836
Option 3 ID : 630680833835
Option 4 ID : 630680833837
Status : Answered
Chosen Option : 3

Q.12 A 3½ digit DMM shows maximum display on the 2V scale is _____, with 1 mV resolution.

- Ans
- ☐ 1. 0.999 V
 - ☒ 2. 1.999 V
 - ☐ 3. 3.999 V
 - ☐ 4. 2.999 V

Question ID : 630680214828
Option 1 ID : 630680833335
Option 2 ID : 630680833336
Option 3 ID : 630680833338
Option 4 ID : 630680833337
Status : Answered
Chosen Option : 2

Q.13 The signal to be observed or measured on CRO is usually applied to the _____.

- Ans
- ☐ 1. control grid
 - ☐ 2. horizontal deflection plates
 - ☐ 3. focusing anode
 - ☒ 4. vertical deflection plates

Question ID : 630680214874

Option 1 ID : 630680833521

Option 2 ID : 630680833520

Option 3 ID : 630680833522

Option 4 ID : 630680833519

Status : Answered

Chosen Option : 3

Q.14 Determine the gain at the breakaway point of the characteristic equation $K = -s(s + 1)$.

- Ans
- ☐ 1. -0.25
 - ☐ 2. 0.5
 - ☒ 3. 0.25
 - ☐ 4. -0.5

Question ID : 630680214961

Option 1 ID : 630680833868

Option 2 ID : 630680833870

Option 3 ID : 630680833869

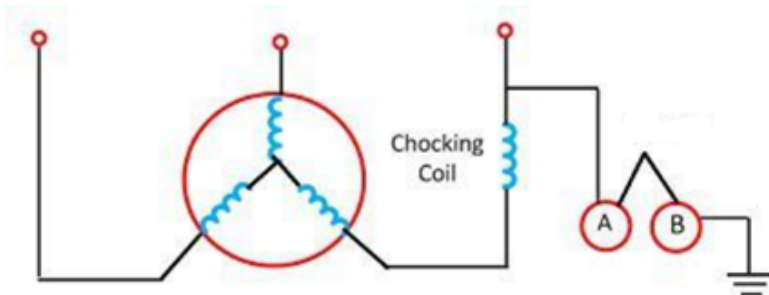
Option 4 ID : 630680833867

Status : Not Answered

Chosen Option : --



Q.15



The lightning arrester shown in the picture is:

- Ans
- ☒ 1. multiple-gap arrester
 - ☒ 2. rod gap arrester
 - ☒ 3. sphere gap arrester
 - ☒ 4. horn gap arrester

Question ID : 630680214955

Option 1 ID : 630680833846

Option 2 ID : 630680833843

Option 3 ID : 630680833844

Option 4 ID : 630680833845

Status : Not Answered

Chosen Option : --

Q.16 The range of memory space in 8085 microprocessors is:

- Ans
- ☒ 1. 0000H to FFFFH
 - ☒ 2. 00001 to FFFFH
 - ☒ 3. 00001 to HHHHF
 - ☒ 4. 0000F to HHHHF

Question ID : 630680214917

Option 1 ID : 630680833691

Option 2 ID : 630680833693

Option 3 ID : 630680833694

Option 4 ID : 630680833692

Status : Not Answered

Chosen Option : --

Q.17 The illumination level in Lux recommended for colour matching is:

- Ans
- ☒ 1. 200-300-500
 - ☒ 2. 750-1000-1500
 - ☒ 3. 300-500-750
 - ☒ 4. 500-750-1000

Question ID : 630680214942
Option 1 ID : 630680833791
Option 2 ID : 630680833794
Option 3 ID : 630680833792
Option 4 ID : 630680833793
Status : Not Answered
Chosen Option : --

Q.18 Which class of power amplifier is best in terms of the maximum efficiency possible?

- Ans
- ☒ 1. Class A
 - ☒ 2. Class C
 - ☒ 3. Class B
 - ☒ 4. Class AB

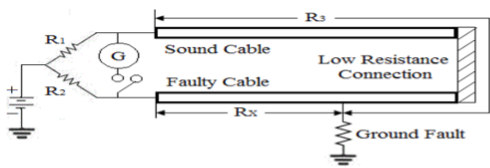
Question ID : 630680214863
Option 1 ID : 630680833475
Option 2 ID : 630680833478
Option 3 ID : 630680833476
Option 4 ID : 630680833477
Status : Answered
Chosen Option : 2

Q.19 Four inductors are connected in series, having values 10 mH, 20 mH, 30 mH and 40 mH, with no mutual inductance between them. Calculate the total inductance.

- Ans
- ☒ 1. 10 mH
 - ☒ 2. 100 mH
 - ☒ 3. 50 mH
 - ☒ 4. 25 mH

Question ID : 630680214830
Option 1 ID : 630680833343
Option 2 ID : 630680833346
Option 3 ID : 630680833345
Option 4 ID : 630680833344
Status : Answered
Chosen Option : 2

Q.20



Find L_X (the length between the test end and the fault end of the faulty cable) if L represents the total length of both the cables in Murray loop test.

Ans

- ✓ 1. $L_X = \frac{LR_2}{R_1 + R_2}$
- ✗ 2. $L_X = \frac{LR_2}{R_2 - R_1}$
- ✗ 3. $L_X = \frac{LR_1}{R_1 + R_2}$
- ✗ 4. $L_X = \frac{LR_1}{R_1 - R_2}$

Question ID : 630680214948
Option 1 ID : 630680833816
Option 2 ID : 630680833818
Option 3 ID : 630680833815
Option 4 ID : 630680833817

Status : Answered
Chosen Option : 1

Q.21 What will be the peak demand of a power plant operated with an average demand of 98 MW and a load factor of 0.7?

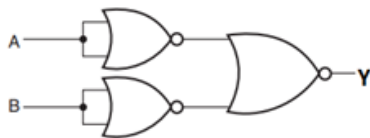
Ans

- ✗ 1. 108 MW
- ✗ 2. 68 MW
- ✓ 3. 140 MW
- ✗ 4. 120 MW

Question ID : 630680214893
Option 1 ID : 630680833598
Option 2 ID : 630680833595
Option 3 ID : 630680833596
Option 4 ID : 630680833597

Status : Answered
Chosen Option : 3

Q.22 Find the expression for Y from the following combination of logic gates.



- Ans
- ✓ 1. $A.B$
 - ✗ 2. $A \oplus B$
 - ✗ 3. $\overline{A \oplus B}$
 - ✗ 4. $A + B$

Question ID : 630680214911

Option 1 ID : 630680833668

Option 2 ID : 630680833669

Option 3 ID : 630680833670

Option 4 ID : 630680833667

Status : Answered

Chosen Option : 3

Q.23 The energy gap between valence and conduction bands is the largest in a/an _____.

- Ans
- ✗ 1. conductor
 - ✗ 2. semiconductor
 - ✗ 3. superconductor
 - ✓ 4. insulator

Question ID : 630680214903

Option 1 ID : 630680833637

Option 2 ID : 630680833636

Option 3 ID : 630680833635

Option 4 ID : 630680833638

Status : Answered

Chosen Option : 4

Q.24 Which of the options will be displayed by the seven-segment display system in 8085 microprocessors in response to the following instructions?

MVI A, 78H

OUT F5H

HLT

- Ans
- ✓ 1. 7
 - ✗ 2. 3
 - ✗ 3. 5
 - ✗ 4. 8

Question ID : 630680214916
Option 1 ID : 630680833689
Option 2 ID : 630680833687
Option 3 ID : 630680833688
Option 4 ID : 630680833690
Status : Not Answered
Chosen Option : --

Q.25 Inspection for the general condition and oil level for a medium installation transformer is carried out:

- Ans
- ✗ 1. monthly
 - ✗ 2. daily
 - ✗ 3. bimonthly
 - ✓ 4. weekly

Question ID : 630680214965
Option 1 ID : 630680833885
Option 2 ID : 630680833883
Option 3 ID : 630680833886
Option 4 ID : 630680833884
Status : Answered
Chosen Option : 1

Q.26 In an alternator, the return path for the flux is obtained through the _____.

- Ans
- ✗ 1. voltage regulator
 - ✗ 2. rectifier
 - ✗ 3. slip ring
 - ✓ 4. stator frame

Question ID : 630680214884
Option 1 ID : 630680833561
Option 2 ID : 630680833560
Option 3 ID : 630680833559
Option 4 ID : 630680833562
Status : Answered
Chosen Option : 3

Q.27 Which of the following instructions in 8085 microprocessors loads a data byte directly?

- Ans
- ☐ 1. IN
 - ☐ 2. MOV
 - ☒ 3. MVI
 - ☐ 4. OUT

Question ID : 630680214915
Option 1 ID : 630680833683
Option 2 ID : 630680833684
Option 3 ID : 630680833685
Option 4 ID : 630680833686
Status : Not Answered
Chosen Option : --

Q.28 Which of the following statements is NOT true for wind energy?

- Ans
- ☒ 1. Wind energy is relatively expensive.
 - ☐ 2. Wind energy is a steady and reliable source of electricity.
 - ☐ 3. Wind energy is eco-friendly.
 - ☐ 4. Wind turbines take up less space.

Question ID : 630680214980
Option 1 ID : 630680833944
Option 2 ID : 630680833945
Option 3 ID : 630680833943
Option 4 ID : 630680833946
Status : Answered
Chosen Option : 2

Q.29 Which of the following electroplating processes gives a highly polished and extremely hard coating?

- Ans
- ☐ 1. Silver plating
 - ☒ 2. Chromium plating
 - ☐ 3. Gold plating
 - ☐ 4. Copper plating

Question ID : 630680214919
Option 1 ID : 630680833702
Option 2 ID : 630680833700
Option 3 ID : 630680833701
Option 4 ID : 630680833699
Status : Answered
Chosen Option : 1

Q.30 Which of the following statements is INCORRECT for a voltmeter?

Ans ☒ 1. It is used to measure potential difference.

☒ 2. It is always connected in parallel.

☒ 3. Internal resistance is very high.

☒ 4.

A galvanometer can be converted into a voltmeter using a low value shunt resistance.

Question ID : 630680214866

Option 1 ID : 630680833489

Option 2 ID : 630680833487

Option 3 ID : 630680833488

Option 4 ID : 630680833490

Status : Answered

Chosen Option : 3

Q.31 The capacities of medium transformer installation in small substations are with unit capacities of:

Ans ☒ 1. 1000 KVA to 10,000 KVA

☒ 2. 1000 KVA to 1500 KVA

☒ 3. 100 KVA to 250 KVA

☒ 4. 250 KVA to 1000 KVA

Question ID : 630680214968

Option 1 ID : 630680833898

Option 2 ID : 630680833897

Option 3 ID : 630680833895

Option 4 ID : 630680833896

Status : Answered

Chosen Option : 4

Q.32 How many electrons are there in the second orbit of a germanium atom?

Ans ☒ 1. 18

☒ 2. 4

☒ 3. 8

☒ 4. 2

Question ID : 630680214840

Option 1 ID : 630680833385

Option 2 ID : 630680833386

Option 3 ID : 630680833384

Option 4 ID : 630680833383

Status : Answered

Chosen Option : 3

Q.33 Where should the bedside switch be mounted in domestic electrical installations?

- Ans
- ☒ 1. 1.25 metre from the floor level
 - ☒ 2. 1 metre from the floor level
 - ☒ 3. 0.3 metre from the floor level
 - ☒ 4. 0.7 metre from the floor level

Question ID : 630680214940
Option 1 ID : 630680833786
Option 2 ID : 630680833785
Option 3 ID : 630680833783
Option 4 ID : 630680833784
Status : Answered
Chosen Option : 2

Q.34 The chemical process where biomass is heated and dried to be used in combustion or gasification is known as:

- Ans
- ☒ 1. torrefaction
 - ☒ 2. hydrophobic
 - ☒ 3. briquettes
 - ☒ 4. photosynthesis

Question ID : 630680214981
Option 1 ID : 630680833950
Option 2 ID : 630680833948
Option 3 ID : 630680833947
Option 4 ID : 630680833949
Status : Not Answered
Chosen Option : --

Q.35 Which of the following lighting systems has the best colour rendering index?

- Ans
- ☒ 1. Incandescent
 - ☒ 2. High pressure sodium
 - ☒ 3. Low pressure sodium
 - ☒ 4. High pressure mercury

Question ID : 630680214941
Option 1 ID : 630680833787
Option 2 ID : 630680833790
Option 3 ID : 630680833789
Option 4 ID : 630680833788
Status : Answered
Chosen Option : 3

Q.36 Which of the following is NOT true pertaining to tidal energy?

Ans ☒ 1.

Tidal energy is also used to store energy in hydroelectric dams.

☒ 2.

Tidal barrages may cause damage to the coast during high storms.

☒ 3. Tidal currents or waves are highly predictable.

☒ 4. It is possible to generate electric power at very low speeds.

Question ID : 630680214983

Option 1 ID : 630680833955

Option 2 ID : 630680833956

Option 3 ID : 630680833957

Option 4 ID : 630680833958

Status : Answered

Chosen Option : 1

Q.37 Which of the following effects is utilised for the generation of electricity by using solar energy?

Ans ☒ 1. Seebeck effect

☒ 2. Photo conductive effect

☒ 3. Photo voltaic effect

☒ 4. Peltier effect

Question ID : 630680214974

Option 1 ID : 630680833922

Option 2 ID : 630680833919

Option 3 ID : 630680833920

Option 4 ID : 630680833921

Status : Answered

Chosen Option : 2

Q.38 Which of the following materials has positive temperature coefficient of resistance?

Ans ☒ 1. Silicon

☒ 2. Germanium

☒ 3. Aluminium

☒ 4. Carbon

Question ID : 630680214838

Option 1 ID : 630680833375

Option 2 ID : 630680833376

Option 3 ID : 630680833377

Option 4 ID : 630680833378

Status : Answered

Chosen Option : 3

Q.39 Which of the following is true for the signal flow graph.

Ans ☒ 1. Applied to both linear and non-linear systems

☒ 2. Signal flow graph of a system is not unique.

☒ 3.

Overall gain of a signal flow graph cannot be determined by using Mason's gain formula.

☒ 4.

Multiplication of all incoming signals and outgoing nodes is zero.

Question ID : 630680214959

Option 1 ID : 630680833859

Option 2 ID : 630680833862

Option 3 ID : 630680833860

Option 4 ID : 630680833861

Status : Not Answered

Chosen Option : --

Q.40 In a synchronous machine, as the machine size decreases:

Ans ☒ 1.
armature resistance decreases and synchronous reactance increases

☒ 2.

armature resistance and synchronous reactance both decrease

☒ 3.

armature resistance increases and synchronous reactance decreases

☒ 4.

armature resistance and synchronous reactance both increase

Question ID : 630680214906

Option 1 ID : 630680833648

Option 2 ID : 630680833649

Option 3 ID : 630680833647

Option 4 ID : 630680833650

Status : Answered

Chosen Option : 2

Q.41 A 4-pole, 50 Hz, 3-phase induction motor runs at a speed of 1200 rpm. Find the slip.

Ans ☒ 1. 0.1

☒ 2. 0.25

☒ 3. 0.15

☒ 4. 0.2

Question ID : 630680214887

Option 1 ID : 630680833571

Option 2 ID : 630680833574

Option 3 ID : 630680833572

Option 4 ID : 630680833573

Status : Answered

Chosen Option : 4

Q.42 An overhead service line is given to a single-storied building by using PVC or a weather-proof cable is connected along with a GI wire of:

- Ans
- ✓ 1. 8 SWG
 - ✗ 2. 12 SWG
 - ✗ 3. 5 SWG
 - ✗ 4. 10 SWG

Question ID : 630680214946
Option 1 ID : 630680833808
Option 2 ID : 630680833810
Option 3 ID : 630680833807
Option 4 ID : 630680833809
Status : Not Answered
Chosen Option : --

Q.43 The purpose of static switches is to:

- Ans
- ✓ 1. connect or disconnect AC or DC input voltage to load
 - ✗ 2. convert fixed DC voltage into variable DC voltage
 - ✗ 3. convert DC voltage into variable AC voltage
 - ✗ 4. convert AC voltage into fixed DC voltage

Question ID : 630680214929
Option 1 ID : 630680833742
Option 2 ID : 630680833740
Option 3 ID : 630680833741
Option 4 ID : 630680833739
Status : Answered
Chosen Option : 1

Q.44 The impedance of the circuit placed across the source of 120 V, 50 Hz is $(10 + j\ 20)\ \Omega$. Find the current.

- Ans
- ✓ 1. $(2.4 - j\ 4.8)\ A$
 - ✗ 2. $(2.4 + j\ 4.8)\ A$
 - ✗ 3. $(2.5 - j\ 5)\ A$
 - ✗ 4. $(2.5 + j\ 5)\ A$

Question ID : 630680214892
Option 1 ID : 630680833593
Option 2 ID : 630680833592
Option 3 ID : 630680833594
Option 4 ID : 630680833591
Status : Answered
Chosen Option : 4

Q.45 Heavy water is used in a _____ power plant as the _____.

- Ans
- ☐ 1. nuclear; fuel
 - ☒ 2. nuclear; moderator
 - ☐ 3. steam; Fuel
 - ☐ 4. hydroelectric; moderator

Question ID : 630680214826
Option 1 ID : 630680833330
Option 2 ID : 630680833328
Option 3 ID : 630680833329
Option 4 ID : 630680833327
Status : Answered
Chosen Option : 2

Q.46 Which of the following materials has the highest thermal conductivity?

- Ans
- ☐ 1. Glass (window)
 - ☒ 2. Concrete
 - ☐ 3. Saw dust
 - ☐ 4. Water

Question ID : 630680214921
Option 1 ID : 630680833708
Option 2 ID : 630680833707
Option 3 ID : 630680833709
Option 4 ID : 630680833710
Status : Answered
Chosen Option : 1

Q.47 The arrester consists of a tube made up of fibre, which is very effective with an isolating spark gap, and an interrupting spark gap inside the fibre tube is:

- Ans
- ☐ 1. rod gap lightning arrester
 - ☐ 2. valve type lightning arrester
 - ☒ 3. expulsion type lightning arrester
 - ☐ 4. thyrite lightning arrester

Question ID : 630680214945
Option 1 ID : 630680833804
Option 2 ID : 630680833806
Option 3 ID : 630680833803
Option 4 ID : 630680833805
Status : Answered
Chosen Option : 1

Q.48 Which of the following testers is used for higher voltages, above 11 kV?

- Ans
- ☐ 1. Two 250 V lamps in series
 - ☐ 2. One 250 V lamp could be used as a test lamp
 - ☒ 3. Metric live-line indicator
 - ☐ 4. Spark tester

Question ID : 630680214970
Option 1 ID : 630680833904
Option 2 ID : 630680833903
Option 3 ID : 630680833906
Option 4 ID : 630680833905
Status : Answered
Chosen Option : 3

Q.49 Which of the following is NOT a part of an electron gun inside the cathode ray tube of a CRO?

- Ans
- ☐ 1. Grid
 - ☒ 2. Graticule
 - ☐ 3. Cathode
 - ☐ 4. Focusing Anode

Question ID : 630680214908
Option 1 ID : 630680833656
Option 2 ID : 630680833658
Option 3 ID : 630680833655
Option 4 ID : 630680833657
Status : Answered
Chosen Option : 2

Q.50 Transmission voltage in the range of 400 kV to 750 kV refers to _____ transmission line.

- Ans
- ☐ 1. LT
 - ☒ 2. EHV
 - ☐ 3. HT
 - ☐ 4. ST

Question ID : 630680214879
Option 1 ID : 630680833542
Option 2 ID : 630680833540
Option 3 ID : 630680833539
Option 4 ID : 630680833541
Status : Answered
Chosen Option : 2

Q.51 The relative magnetic permeability of ferromagnetic materials:

- Ans
- ☒ 1. is always zero
 - ☒ 2. varies with the magnetic field strength
 - ☐ 3. is always constant
 - ☐ 4. is always unity

Question ID : 630680214894

Option 1 ID : 630680833599

Option 2 ID : 630680833601

Option 3 ID : 630680833600

Option 4 ID : 630680833602

Status : Answered

Chosen Option : 2

Q.52 Which of the following is NOT essential for a grid connected solar system?

- Ans
- ☒ 1. Batteries
 - ☐ 2. Inverter
 - ☐ 3. Electricity meter
 - ☐ 4. The electricity grid

Question ID : 630680214976

Option 1 ID : 630680833930

Option 2 ID : 630680833928

Option 3 ID : 630680833929

Option 4 ID : 630680833927

Status : Answered

Chosen Option : 1

Q.53 If a force f is applied on a mass M and it displays distance x_1 in the direction of f and distance x_2 in the opposite direction, then the value of f is:

- Ans
- ☒ 1. $f = M \left(\frac{d^2 x_1}{dt^2} - \frac{d^2 x_2}{dt^2} \right)$
 - ☐ 2. $f = M \left(\frac{dx_1}{dt} - \frac{dx_2}{dt} \right)$
 - ☐ 3. $f = M \left(\frac{dx_1}{dt} + \frac{dx_2}{dt} \right)$
 - ☐ 4. $f = M \left(\frac{d^2 x_1}{dt^2} + \frac{d^2 x_2}{dt^2} \right)$

Question ID : 630680214957

Option 1 ID : 630680833852

Option 2 ID : 630680833854

Option 3 ID : 630680833853

Option 4 ID : 630680833851

Status : Answered

Chosen Option : 3

Q.54 A transmission line of surge impedance $300\ \Omega$ is connected to a load of $100\ \Omega$. The reflection coefficient of the transmission line at the load end is:

- Ans**
- ☒ 1. 0.5
 - ☐ 2. 1.0
 - ☐ 3. 0.75
 - ☐ 4. 0

Question ID : 630680214877
Option 1 ID : 630680833532
Option 2 ID : 630680833534
Option 3 ID : 630680833533
Option 4 ID : 630680833531
Status : Not Answered
Chosen Option : --

Q.55 Relays in which the operation is governed by the ratio of applied voltage to current in the protected circuit are known as:

- Ans**
- ☒ 1. distance relays
 - ☐ 2. loss of excitation relays
 - ☐ 3. reverse power relays
 - ☐ 4. differential protection relays

Question ID : 630680214952
Option 1 ID : 630680833831
Option 2 ID : 630680833833
Option 3 ID : 630680833834
Option 4 ID : 630680833832
Status : Answered
Chosen Option : 4

Q.56 Which of the following is NOT used in the preparation of nylon?

- Ans**
- ☐ 1. Coal
 - ☐ 2. Water
 - ☒ 3. Wool
 - ☐ 4. Air

Question ID : 630680214851
Option 1 ID : 630680833427
Option 2 ID : 630680833428
Option 3 ID : 630680833430
Option 4 ID : 630680833429
Status : Answered
Chosen Option : 4

Q.57 In an induction type energy meter, which of the following is NOT a part of the driving system?

- Ans
- ☒ 1. Pressure coil
 - ☒ 2. Permanent magnet
 - ☒ 3. Current coil
 - ☒ 4. Electromagnet

Question ID : 630680214869
Option 1 ID : 630680833500
Option 2 ID : 630680833502
Option 3 ID : 630680833501
Option 4 ID : 630680833499
Status : Answered
Chosen Option : 2

Q.58 Which of the following is NOT covered under operational cost in a power system?

- Ans
- ☒ 1. Maintenance cost
 - ☒ 2. Operating labour cost
 - ☒ 3. Depreciation cost
 - ☒ 4. Fuel cost

Question ID : 630680214907
Option 1 ID : 630680833653
Option 2 ID : 630680833651
Option 3 ID : 630680833652
Option 4 ID : 630680833654
Status : Answered
Chosen Option : 2

Q.59 Mercury vapour light is always:

- Ans
- ☒ 1. yellow
 - ☒ 2. bluish
 - ☒ 3. orange-yellow
 - ☒ 4. orange-red

Question ID : 630680214925
Option 1 ID : 630680833726
Option 2 ID : 630680833723
Option 3 ID : 630680833725
Option 4 ID : 630680833724
Status : Answered
Chosen Option : 2

Q.60 Among the following, which has the lowest value of dielectric constant?

- Ans
- ☐ 1. Porcelain
 - ☐ 2. Soft rubber
 - ☒ 3. Dry air
 - ☐ 4. Nylon

Question ID : 630680214843
Option 1 ID : 630680833398
Option 2 ID : 630680833395
Option 3 ID : 630680833397
Option 4 ID : 630680833396
Status : Answered
Chosen Option : 3

Q.61 A two-wattmeter method is used to measure 3-phase power. If the reading of one wattmeter is half of the other, the phase angle will be _____.

- Ans
- ☐ 1. 0°
 - ☐ 2. 45°
 - ☐ 3. 90°
 - ☒ 4. 30°

Question ID : 630680214868
Option 1 ID : 630680833495
Option 2 ID : 630680833497
Option 3 ID : 630680833498
Option 4 ID : 630680833496
Status : Answered
Chosen Option : 2

Q.62 What will be the RPM of the generator of wind power if the rotor turns the shaft at 18 RPM and the gear box ratio is 1 : 85?

- Ans
- ☐ 1. 1800
 - ☒ 2. 1530
 - ☐ 3. 900
 - ☐ 4. 765

Question ID : 630680214978
Option 1 ID : 630680833938
Option 2 ID : 630680833937
Option 3 ID : 630680833936
Option 4 ID : 630680833935
Status : Answered
Chosen Option : 2

Q.63 State whether the following statements are true or false for solar power.

Statement 1: Solar water pumping systems is a hybrid solar electrical system.

Statement 2: Microcontroller compares the output of the solar power and batteries in the hybrid solar system.

- Ans**
- ☒ 1. Statement 1 is true, but statement 2 is false.
 - ☒ 2. Both the statements are false.
 - ☒ 3. Both the statements are true.
 - ☒ 4. Statement 2 is true, but statement 1 is false.

Question ID : 630680214977
Option 1 ID : 630680833933
Option 2 ID : 630680833932
Option 3 ID : 630680833931
Option 4 ID : 630680833934
Status : Answered
Chosen Option : 4

Q.64 Which of the following is NOT a correct pair of analogous parameters in electric and magnetic circuit?

- Ans**
- ☒ 1. EMF and MMF
 - ☒ 2. Current density and Flux density
 - ☒ 3. Current and Flux
 - ☒ 4. Resistance and Permeance

Question ID : 630680214829
Option 1 ID : 630680833339
Option 2 ID : 630680833342
Option 3 ID : 630680833340
Option 4 ID : 630680833341
Status : Answered
Chosen Option : 4

Q.65 A transformer has 3% resistance and 5% reactance. Find the voltage regulation at full load at 0.8 lagging power factor.

- Ans**
- ☒ 1. 4.8%
 - ☒ 2. 2.4%
 - ☒ 3. 2.7%
 - ☒ 4. 5.4%

Question ID : 630680214859
Option 1 ID : 630680833459
Option 2 ID : 630680833462
Option 3 ID : 630680833461
Option 4 ID : 630680833460
Status : Answered
Chosen Option : 3

Q.66 Which of the following is a source of renewable energy?

- Ans
- ☐ 1. Petroleum
 - ☒ 2. Biogas
 - ☐ 3. Uranium
 - ☐ 4. Coal

Question ID : 630680214973

Option 1 ID : 630680833916

Option 2 ID : 630680833918

Option 3 ID : 630680833915

Option 4 ID : 630680833917

Status : Answered

Chosen Option : 2

Q.67 Which of the following acts will NOT help in controlling global warming?

- Ans
- ☐ 1. Reducing the use of fossil fuels
 - ☒ 2. Burning of human generated waste
 - ☐ 3. Increasing tree plantation
 - ☐ 4. Using energy efficient lights

Question ID : 630680214850

Option 1 ID : 630680833424

Option 2 ID : 630680833425

Option 3 ID : 630680833426

Option 4 ID : 630680833423

Status : Answered

Chosen Option : 2

Q.68 What should be the breaking strength of a guard wire as per rule 88 of the Indian Electricity Rules (1956)?

- Ans
- ☒ 1. Not less than 635.02 kg
 - ☐ 2. Not less than 502.03 kg
 - ☐ 3. Not less than 952.03 kg
 - ☐ 4. Not less than 1035.02 kg

Question ID : 630680214938

Option 1 ID : 630680833776

Option 2 ID : 630680833775

Option 3 ID : 630680833777

Option 4 ID : 630680833778

Status : Answered

Chosen Option : 1

Q.69 A power plant has a maximum demand of 120 MW and the sum of individual maximum demands of 5 consumers supplied through the same power plant is 180 MW. Find the diversity factor.

- Ans
- ✓ 1. 1.5
 - ✗ 2. 0.67
 - ✗ 3. 0.3
 - ✗ 4. 0.5

Question ID : 630680214882

Option 1 ID : 630680833551

Option 2 ID : 630680833552

Option 3 ID : 630680833554

Option 4 ID : 630680833553

Status : Answered

Chosen Option : 1

Q.70 Which of the following is NOT true for the frequency response analysis of transfer functions?

- Ans
- ✗ 1. Applied only to linear systems
 - ✗ 2. Time-consuming procedure
 - ✗ 3. Frequency response for the existing system is possible to obtain if the time constant is up to a few minutes
 - ✓ 4. Low accuracy

Question ID : 630680214962

Option 1 ID : 630680833871

Option 2 ID : 630680833874

Option 3 ID : 630680833872

Option 4 ID : 630680833873

Status : Answered

Chosen Option : 1

Q.71 The input for a centre-tapped full wave rectifier is given by $v(t) = 200 \sin \omega t$. Find the PIV rating of the diodes used in the circuit.

- Ans
- ✗ 1. 100 V
 - ✓ 2. 400 V
 - ✗ 3. 300 V
 - ✗ 4. 200 V

Question ID : 630680214862

Option 1 ID : 630680833474

Option 2 ID : 630680833471

Option 3 ID : 630680833472

Option 4 ID : 630680833473

Status : Answered

Chosen Option : 2

Q.72 A coil is said to have a self-inductance of 10 H if an EMF of 1 volt is induced in it when the current flowing through it changes at the rate of _____.

- Ans
- ✗ 1. 1 A/min
 - ✓ 2. 100 mA/second
 - ✗ 3. 1 mA/Second
 - ✗ 4. 10 mA/Second

Question ID : 630680214896
Option 1 ID : 630680833610
Option 2 ID : 630680833607
Option 3 ID : 630680833609
Option 4 ID : 630680833608
Status : Answered
Chosen Option : 2

Q.73 Laplace trans form of Dirac delta function $x(t) = x_i \delta(t-\alpha)$ is:

- Ans
- ✗ 1. $x(s) = x_i e^{-\alpha/s}$
 - ✗ 2. $x(s) = x_i e^{-s/\alpha}$
 - ✓ 3. $x(s) = x_i e^{-\alpha s}$
 - ✗ 4. $x(s) = x_i e^{\alpha s}$

Question ID : 630680214960
Option 1 ID : 630680833865
Option 2 ID : 630680833866
Option 3 ID : 630680833863
Option 4 ID : 630680833864
Status : Not Answered
Chosen Option : --

Q.74 If two identical inductors are magnetically coupled, the mutual inductance is 16 mH and the coefficient of coupling is 0.4. Find the self-inductance of the identical inductors.

- Ans
- ✗ 1. 20 mH
 - ✓ 2. 40 mH
 - ✗ 3. 16 mH
 - ✗ 4. 10 mH

Question ID : 630680214895
Option 1 ID : 630680833605
Option 2 ID : 630680833606
Option 3 ID : 630680833604
Option 4 ID : 630680833603
Status : Answered
Chosen Option : 2

Q.75 Negative boosters are employed to conform to the regulation that the potential difference between any two points of the rail return shall NOT exceed:

- Ans ☒ 1. 7 V
☐ 2. 5 V
☐ 3. 15 V
☐ 4. 10 V

Question ID : 630680214927
Option 1 ID : 630680833732
Option 2 ID : 630680833731
Option 3 ID : 630680833734
Option 4 ID : 630680833733
Status : Answered
Chosen Option : 1

Q.76 The deflecting torque of an ammeter is directly proportional to the current passing through it, and the instrument has full scale deflection of 60° for a current of 8 A. What deflection will occur for a current of 4 A when the instrument is spring-controlled?

- Ans ☐ 1. 45°
☒ 2. 30°
☐ 3. 60°
☐ 4. 15°

Question ID : 630680214867
Option 1 ID : 630680833492
Option 2 ID : 630680833491
Option 3 ID : 630680833493
Option 4 ID : 630680833494
Status : Answered
Chosen Option : 2

Q.77 Silver is NOT used very frequently over other conductors because:

- Ans ☒ 1. it corrodes easily
☐ 2. it has high resistivity
☐ 3. it has low conductivity
☐ 4. it has high specific gravity

Question ID : 630680214839
Option 1 ID : 630680833382
Option 2 ID : 630680833379
Option 3 ID : 630680833381
Option 4 ID : 630680833380
Status : Answered
Chosen Option : 1

Q.78 Purification of the transformer oil in substation may proceed while the transformer is in service on:

- Ans
- ✓ 1. light load
 - ✗ 2. full load
 - ✗ 3. twice the full load
 - ✗ 4. 1.5 times the full load

Question ID : 630680214967
Option 1 ID : 630680833891
Option 2 ID : 630680833892
Option 3 ID : 630680833894
Option 4 ID : 630680833893
Status : Answered
Chosen Option : 1

Q.79 The chance of appearance of a phase-to-phase fault in the power system is:

- Ans
- ✗ 1. 2% to 3%
 - ✗ 2. 3% to 5%
 - ✓ 3. 15%
 - ✗ 4. 10%

Question ID : 630680214949
Option 1 ID : 630680833819
Option 2 ID : 630680833820
Option 3 ID : 630680833822
Option 4 ID : 630680833821
Status : Answered
Chosen Option : 2

Q.80 The thyristors of the three-phase full converter are triggered at an interval of:

- Ans
- ✗ 1. $\frac{\pi}{2}$
 - ✓ 2. $\frac{\pi}{3}$
 - ✗ 3. $\frac{\pi}{6}$
 - ✗ 4. $\frac{\pi}{4}$

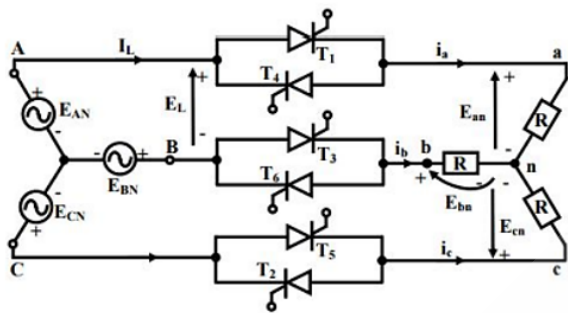
Question ID : 630680214930
Option 1 ID : 630680833746
Option 2 ID : 630680833745
Option 3 ID : 630680833743
Option 4 ID : 630680833744
Status : Answered
Chosen Option : 3

Q.81 The starting torque developed by the capacitor start motor is _____ times the full load torque developed by an equally rated resistance-start motor.

- Ans
- 1. 10 to 15
 - 2. 3 to 4.5
 - 3. 6 to 8
 - 4. 1.5 to 2

Question ID : 630680214886
Option 1 ID : 630680833569
Option 2 ID : 630680833567
Option 3 ID : 630680833570
Option 4 ID : 630680833568
Status : Answered
Chosen Option : 2

Q.82



The angle between the triggering of thyristors 1 and 2 of the three-phase, three-wire AC regulator is:

- Ans
- 1. 120°
 - 2. 60°
 - 3. 180°
 - 4. 30°

Question ID : 630680214931
Option 1 ID : 630680833749
Option 2 ID : 630680833748
Option 3 ID : 630680833750
Option 4 ID : 630680833747
Status : Not Answered
Chosen Option : --

Q.83 Which of the following pipes is preferred for surface conduit wiring in industrial electrification for power circuit?

- Ans
- ☐ 1. Fibre pipe
 - ☐ 2. PVC pipe
 - ☒ 3. Galvanised pipe
 - ☐ 4. Cast iron pipe

Question ID : 630680214943
Option 1 ID : 630680833798
Option 2 ID : 630680833797
Option 3 ID : 630680833796
Option 4 ID : 630680833795
Status : Answered
Chosen Option : 2

Q.84 A body of ocean water that is partly enclosed by natural manmade barrier is known as:

- Ans
- ☐ 1. tidal estuary
 - ☒ 2. tidal lagoons
 - ☐ 3. tidal stanford
 - ☐ 4. tidal barrage

Question ID : 630680214982
Option 1 ID : 630680833952
Option 2 ID : 630680833953
Option 3 ID : 630680833954
Option 4 ID : 630680833951
Status : Not Answered
Chosen Option : --

Q.85 The ratio of the actual quantity of substance liberated or deposited to the theoretical quantity as per Faraday's law is:

- Ans
- ☒ 1. current efficiency
 - ☐ 2. energy efficiency
 - ☐ 3. voltage efficiency
 - ☐ 4. power efficiency

Question ID : 630680214918
Option 1 ID : 630680833695
Option 2 ID : 630680833696
Option 3 ID : 630680833698
Option 4 ID : 630680833697
Status : Answered
Chosen Option : 3

Q.86 Find the rectifier efficiency of a half-wave rectifier if the output power is 60 W for an input power of 150 W.

- Ans
- ✗ 1. 60 %
 - ✗ 2. 50 %
 - ✗ 3. 30 %
 - ✓ 4. 40 %

Question ID : 630680214901
Option 1 ID : 630680833630
Option 2 ID : 630680833629
Option 3 ID : 630680833627
Option 4 ID : 630680833628
Status : Answered
Chosen Option : 4

Q.87 The maximum characters that can be represented by the ASCII (American Standard Code for Information Interchange) is:

- Ans
- ✗ 1. 16
 - ✓ 2. 128
 - ✗ 3. 64
 - ✗ 4. 32

Question ID : 630680214910
Option 1 ID : 630680833663
Option 2 ID : 630680833666
Option 3 ID : 630680833665
Option 4 ID : 630680833664
Status : Not Answered
Chosen Option : --

Q.88 A two-port network represented with Z parameters is said to be symmetrical, if _____.

- Ans
- ✗ 1. $Z_{12} = Z_{11}$
 - ✗ 2. $Z_{12} = Z_{21}$
 - ✗ 3. $Z_{22} = Z_{21}$
 - ✓ 4. $Z_{11} = Z_{22}$

Question ID : 630680214834
Option 1 ID : 630680833361
Option 2 ID : 630680833359
Option 3 ID : 630680833360
Option 4 ID : 630680833362
Status : Answered
Chosen Option : 4

Q.89 Which of the following is an example of non-renewable energy?

- Ans
- ☐ 1. Geothermal energy
 - ☒ 2. Nuclear energy
 - ☐ 3. Wind energy
 - ☐ 4. Solar energy

Question ID : 630680214847

Option 1 ID : 630680833414

Option 2 ID : 630680833413

Option 3 ID : 630680833411

Option 4 ID : 630680833412

Status : Answered

Chosen Option : 3

Q.90 In pure silicon, if _____ is added as the impurity, P-type semiconductor is formed and if _____ is added as the impurity, N-type semiconductor is formed, respectively.

- Ans
- ☐ 1. arsenic; bismuth
 - ☐ 2. aluminium; indium
 - ☒ 3. boron; antimony
 - ☐ 4. bismuth; boron

Question ID : 630680214841

Option 1 ID : 630680833388

Option 2 ID : 630680833390

Option 3 ID : 630680833387

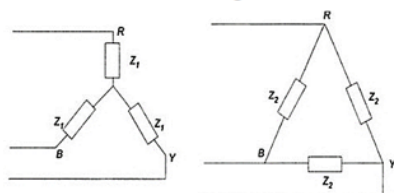
Option 4 ID : 630680833389

Status : Answered

Chosen Option : 3



Q.91 If the star and delta configurations shown in the following figure are equivalent, then _____.



- Ans
- ✓ 1. $Z_2 = 3Z_1$
 - ✗ 2. $Z_2 = Z_1$
 - ✗ 3. $Z_2 = \sqrt{3} Z_1$
 - ✗ 4. $Z_2 = \sqrt{2} Z_1$

Question ID : 630680214836

Option 1 ID : 630680833368

Option 2 ID : 630680833367

Option 3 ID : 630680833369

Option 4 ID : 630680833370

Status : Answered

Chosen Option : 1

Q.92 If one part of the universe loses energy, then:

- Ans
- ✗ 1. slowly the total energy of the universe reduces to zero
 - ✗ 2. the energy gets doubled
 - ✗ 3. the energy will be lost forever
 - ✓ 4. another part will gain an equal amount of energy

Question ID : 630680214827

Option 1 ID : 630680833333

Option 2 ID : 630680833332

Option 3 ID : 630680833331

Option 4 ID : 630680833334

Status : Not Answered

Chosen Option : --

Q.93 State whether the following statements are true or false for three-phase inverters in 120° conduction mode.

Statement 1: It is preferable for a star connected load because it provides a six-step waveform across any phase.

Statement 2: As each device conducts for 120°, only three devices are in the conduction state at any instant.

- Ans**
- ☒ 1. Both the statements are true.
 - ☒ 2. Statement 1 is true, but statement 2 is false.
 - ☒ 3. Both the statements are false.
 - ☒ 4. Statement 2 is true, but statement 1 is false.

Question ID : 630680214933
Option 1 ID : 630680833755
Option 2 ID : 630680833757
Option 3 ID : 630680833756
Option 4 ID : 630680833758
Status : Not Answered
Chosen Option : --

Q.94 Which of the following statements is NOT true for Fourier’s law for heat conduction?

Ans

- ☒ 1. It helps to define the thermal conductivity of the medium through which heat is conducted.

- ☒ 2. It is a scalar expression, indicating that heat flows in a random direction.
- ☒ 3. It is based on experimental evidence and cannot be derived from the first principle.
- ☒ 4. It is applicable to solid, liquid and gas.

Question ID : 630680214920
Option 1 ID : 630680833703
Option 2 ID : 630680833705
Option 3 ID : 630680833706
Option 4 ID : 630680833704
Status : Not Answered
Chosen Option : --

Q.95 The best insurance against the rusting of steel structures and fittings is to _____ them.

- Ans**
- ☒ 1. galvanise
 - ☒ 2. paint
 - ☒ 3. grease
 - ☒ 4. oil

Question ID : 630680214972
Option 1 ID : 630680833912
Option 2 ID : 630680833913
Option 3 ID : 630680833911
Option 4 ID : 630680833914
Status : Answered
Chosen Option : 2

Q.96 Which of the following drive systems is essential for complicated metal-cutting machine tools and paper-making machines?

- Ans
- ☐ 1. Group drive
 - ☐ 2. Supernova drive
 - ☐ 3. Individual drive
 - ☒ 4. Multi-motor drive

Question ID : 630680214926
Option 1 ID : 630680833728
Option 2 ID : 630680833730
Option 3 ID : 630680833727
Option 4 ID : 630680833729
Status : Not Answered
Chosen Option : --

Q.97 The basic non-isolated Cuk converter is an SMPS with:

- Ans
- ☒ 1. two inductors, two capacitors, one diode and one transistor switch
 - ☐ 2. two inductors, two capacitors, two diodes and two transistor switches
 - ☐ 3. one inductor, one capacitor, two diodes and two transistor switches
 - ☐ 4. one inductor, one capacitor, one diode and one transistor switch

Question ID : 630680214932
Option 1 ID : 630680833752
Option 2 ID : 630680833753
Option 3 ID : 630680833754
Option 4 ID : 630680833751
Status : Not Answered
Chosen Option : --

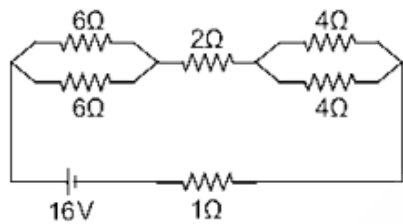
Q.98 The dipole moment of _____ material can be represented by the following diagram.



- Ans
- ☒ 1. ferromagnetic
 - ☒ 2. anti-ferromagnetic
 - ☒ 3. ferrimagnetic
 - ☒ 4. paramagnetic

Question ID : 630680214844
Option 1 ID : 630680833400
Option 2 ID : 630680833401
Option 3 ID : 630680833402
Option 4 ID : 630680833399
Status : Answered
Chosen Option : 2

Q.99 Find the current in the following circuit.



- Ans
- ☒ 1. 2 A
 - ☒ 2. 4 A
 - ☒ 3. 3 A
 - ☒ 4. 1 A

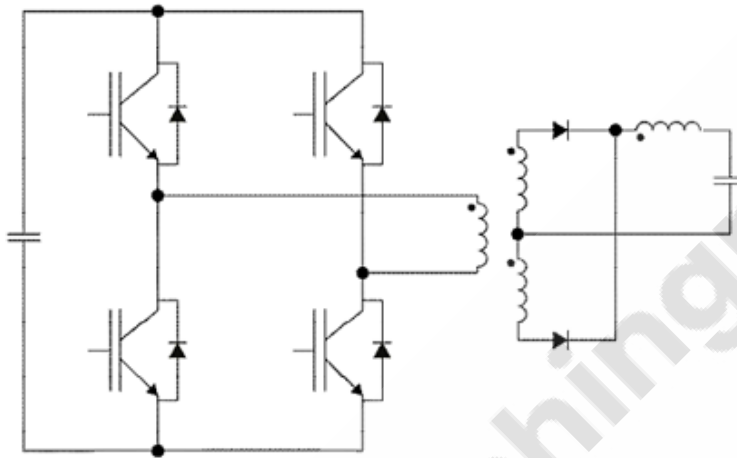
Question ID : 630680214831
Option 1 ID : 630680833348
Option 2 ID : 630680833350
Option 3 ID : 630680833349
Option 4 ID : 630680833347
Status : Answered
Chosen Option : 1

Q.100 A 220 V separately excited DC generator has core losses of 200 W when supplying a load current of 20 A. Find the value of armature resistance if the machine is operated with maximum efficiency.

- Ans
- ☒ 1. $1.5 \, \Omega$
 - ☒ 2. $2.0 \, \Omega$
 - ☒ 3. $0.5 \, \Omega$
 - ☒ 4. $0.25 \, \Omega$

Question ID : 630680214855
Option 1 ID : 630680833444
Option 2 ID : 630680833443
Option 3 ID : 630680833445
Option 4 ID : 630680833446
Status : Not Answered
Chosen Option : --

Q.101



Identify the circuit shown in the above figure.

- Ans
- ☒ 1. Switched mode power supply
 - ☒ 2. Static AC circuit breaker
 - ☒ 3. Solid state relay
 - ☒ 4. Uninterrupted power supply system

Question ID : 630680214935
Option 1 ID : 630680833763
Option 2 ID : 630680833765
Option 3 ID : 630680833766
Option 4 ID : 630680833764
Status : Not Answered
Chosen Option : --

Q.102 In a short-shunt DC motor, the supply current will be equal to:

- Ans
- ☒ 1. the sum of the armature and the shunt field current
 - ☐ 2. the shunt field current
 - ☐ 3. the armature current
 - ☐ 4. the average of the armature and the shunt field current

Question ID : 630680214856

Option 1 ID : 630680833447

Option 2 ID : 630680833449

Option 3 ID : 630680833448

Option 4 ID : 630680833450

Status : Answered

Chosen Option : 1

Q.103 State whether the following statements are true or false for isolator.

Statement 1: An isolator is a switch intend for isolating a circuit on no-load.

Statement 2: It can be used for breaking a circuit carrying appreciable currents.

- Ans
- ☐ 1. Both the statements are true.
 - ☐ 2. Both the statements are false.
 - ☒ 3. Statement 1 is true, but statement 2 is false.
 - ☐ 4. Statement 2 is true, but statement 1 is false.

Question ID : 630680214966

Option 1 ID : 630680833887

Option 2 ID : 630680833888

Option 3 ID : 630680833889

Option 4 ID : 630680833890

Status : Answered

Chosen Option : 4

Q.104 Which of the following instruments is used to convert the displacement into an electrical signal?

- Ans
- ☒ 1. LVDT
 - ☐ 2. RTD
 - ☐ 3. Thermocouple
 - ☐ 4. Thermistor

Question ID : 630680214865

Option 1 ID : 630680833483

Option 2 ID : 630680833484

Option 3 ID : 630680833485

Option 4 ID : 630680833486

Status : Not Answered

Chosen Option : --

Q.105 The planned use of resources in order to meet present needs and to store a part for future generations is called:

- Ans
- ✗ 1. resource calculation
 - ✗ 2. resource optimisation
 - ✓ 3. resource conservation
 - ✗ 4. resource consumption

Question ID : 630680214849

Option 1 ID : 630680833422

Option 2 ID : 630680833421

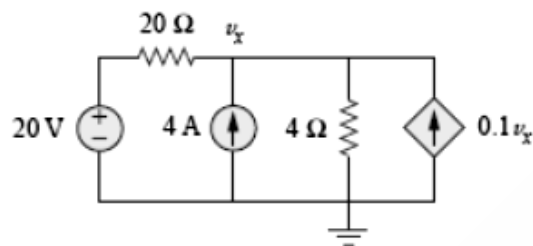
Option 3 ID : 630680833419

Option 4 ID : 630680833420

Status : Not Answered

Chosen Option : --

Q.106 Using superposition theorem, find ' v_x ' in the following circuit.



- Ans
- ✓ 1. 25 V
 - ✗ 2. 15 V
 - ✗ 3. 30 V
 - ✗ 4. 20 V

Question ID : 630680214897

Option 1 ID : 630680833611

Option 2 ID : 630680833614

Option 3 ID : 630680833613

Option 4 ID : 630680833612

Status : Not Answered

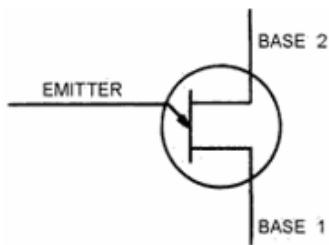
Chosen Option : --

Q.107 If the average value of a sine wave is 100 V, then the RMS value is _____.

- Ans
- ☒ 1. 100 V
 - ☒ 2. 111 V
 - ☒ 3. 90 V
 - ☒ 4. 50 V

Question ID : 630680214825
Option 1 ID : 630680833324
Option 2 ID : 630680833325
Option 3 ID : 630680833323
Option 4 ID : 630680833326
Status : Not Answered
Chosen Option : --

Q.108 Identify the device represented by the following symbol.



- Ans
- ☒ 1. JFET
 - ☒ 2. UJT
 - ☒ 3. BJT
 - ☒ 4. SCR

Question ID : 630680214864
Option 1 ID : 630680833482
Option 2 ID : 630680833481
Option 3 ID : 630680833480
Option 4 ID : 630680833479
Status : Answered
Chosen Option : 4

Q.109 Joule/Coulomb is the unit of _____.

- Ans
- ☐ 1. Electric charge
 - ☐ 2. Electric power
 - ☒ 3. Electric potential
 - ☐ 4. Electric current

Question ID : 630680214824
Option 1 ID : 630680833320
Option 2 ID : 630680833322
Option 3 ID : 630680833319
Option 4 ID : 630680833321
Status : Answered
Chosen Option : 1

Q.110 In an auto-transformer, if the transformation ratio is 2, then the saving in the conductor material is _____ as compared to 2-winding transformer.

- Ans
- ☐ 1. 75%
 - ☒ 2. 50%
 - ☐ 3. 90%
 - ☐ 4. 25%

Question ID : 630680214860
Option 1 ID : 630680833465
Option 2 ID : 630680833464
Option 3 ID : 630680833466
Option 4 ID : 630680833463
Status : Not Answered
Chosen Option : --

Q.111 With the addition of tertiary winding, the Y-Y connection becomes _____ connection.

- Ans
- ☐ 1. Y-Y- Δ
 - ☐ 2. Δ -Y- Δ
 - ☐ 3. Δ -Y-Y
 - ☒ 4. Y- Δ -Y

Question ID : 630680214891
Option 1 ID : 630680833587
Option 2 ID : 630680833590
Option 3 ID : 630680833588
Option 4 ID : 630680833589
Status : Not Answered
Chosen Option : --

Q.112 What is the condition of symmetry in terms of h-parameters for a two-port network?

- Ans
- ☐ 1. $h_{11}h_{22} + h_{12}h_{21} = 0$
 - ☒ 2. $h_{11}h_{22} - h_{12}h_{21} = 1$
 - ☐ 3. $h_{11}h_{22} + h_{12}h_{21} = 1$
 - ☐ 4. $h_{11}h_{22} = h_{12}h_{21}$

Question ID : 630680214898
Option 1 ID : 630680833618
Option 2 ID : 630680833617
Option 3 ID : 630680833615
Option 4 ID : 630680833616
Status : Answered
Chosen Option : 4

Q.113 State whether the following statements are true or false for braking systems in DC shunt motors.

Statement 1: Plugging braking is used for machine tools and elevators.

Statement 2: Plugging gives better braking torque comparing with the rheostatic braking.

- Ans
- ☐ 1. Both the statements are false.
 - ☒ 2. Both the statements are true.
 - ☐ 3. Statement 2 is true but statement 1 is false.
 - ☐ 4. Statement 1 is true but statement 2 is false.

Question ID : 630680214928
Option 1 ID : 630680833736
Option 2 ID : 630680833735
Option 3 ID : 630680833738
Option 4 ID : 630680833737
Status : Answered
Chosen Option : 3

Q.114 Which of the following statements is NOT true for the arc blow experienced in arc welding?

- Ans
- ☐ 1. Arc blow may cause excessive weld spatter.
 - ☒ 2. Arc blow is encountered only in an AC welding set.
 - ☐ 3. Arc blow is experienced the most when the applied current is above 200 A or below 40 A.
 - ☐ 4. Due to arc blow, heat penetration in the required area is low, which leads to incomplete fusion.

Question ID : 630680214922
Option 1 ID : 630680833714
Option 2 ID : 630680833711
Option 3 ID : 630680833712
Option 4 ID : 630680833713
Status : Not Answered
Chosen Option : --

Q.115 While calculating the voltage regulation of a transformer, if the power factor is not specified, its value is to be assumed as _____.

- Ans
- ☐ 1. 0.9
 - ☒ 2. unity
 - ☐ 3. zero
 - ☐ 4. 0.5

Question ID : 630680214858
Option 1 ID : 630680833457
Option 2 ID : 630680833458
Option 3 ID : 630680833455
Option 4 ID : 630680833456
Status : Answered
Chosen Option : 2

Q.116 Which of the following is NOT true for Air Blast Circuit Breaker?

- Ans
- ☐ 1. Elimination of fire hazard
 - ☒ 2. Requirement of higher-level maintenance
 - ☐ 3. Suitability for frequent operation
 - ☐ 4. High-speed operation

Question ID : 630680214951
Option 1 ID : 630680833830
Option 2 ID : 630680833829
Option 3 ID : 630680833828
Option 4 ID : 630680833827
Status : Answered
Chosen Option : 2

Q.117 Which of the following is true for joint box types of electrical wiring?

- Ans
- ☐ 1. Skilled labours are not required.
 - ☐ 2. Always gives a good look
 - ☒ 3. Cost of wiring is saved.
 - ☐ 4. Fault location is easy.

Question ID : 630680214944
Option 1 ID : 630680833801
Option 2 ID : 630680833802
Option 3 ID : 630680833799
Option 4 ID : 630680833800
Status : Answered
Chosen Option : 4

Q.118 Which of the following is NOT true for static relays?

Ans ☒ 1. The risk of unwanted tripping is high with static relays.

☒ 2.

Static relay is a combination of both static and electromagnetic relays.

☒ 3.

In static relay, the measurement is performed by electronic, magnetic, optical or another component without mechanical motion.

☒ 4. In static relay, there is no armature and moving contacts.

Question ID : 630680214956

Option 1 ID : 630680833850

Option 2 ID : 630680833847

Option 3 ID : 630680833849

Option 4 ID : 630680833848

Status : Answered

Chosen Option : 4

Q.119 The economic limit of the breaking capacity of circuit breakers installed at substations at 33 kV is:

Ans ☒ 1. 750 MVA

☒ 2. 1500 MVA

☒ 3. 150 MVA

☒ 4. 75 MVA

Question ID : 630680214969

Option 1 ID : 630680833900

Option 2 ID : 630680833899

Option 3 ID : 630680833901

Option 4 ID : 630680833902

Status : Answered

Chosen Option : 4

Q.120 An op-amp has a voltage gain of 200000. If the output voltage is 1 V, the input voltage will be:

Ans ☒ 1. 2 millivolts

☒ 2. 2 microvolts

☒ 3. 5 millivolts

☒ 4. 5 microvolts

Question ID : 630680214902

Option 1 ID : 630680833634

Option 2 ID : 630680833632

Option 3 ID : 630680833633

Option 4 ID : 630680833631

Status : Answered

Chosen Option : 2

Q.121 Which of the following is NOT the property of the draw-in system for laying of underground cables?

- Ans
- ✓ 1. The maintenance cost is high.
 - ✗ 2. The cables are not armoured.
 - ✗ 3. The initial cost is very high.
 - ✗ 4. Less chances of fault occurrence.

Question ID : 630680214881
Option 1 ID : 630680833548
Option 2 ID : 630680833547
Option 3 ID : 630680833549
Option 4 ID : 630680833550
Status : Answered
Chosen Option : 2

Q.122 A short transmission line has impedance value of $25\ \Omega$. Find the ABCD parameters of the transmission line.

- Ans
- ✗ 1. $A = 1, B = 25, C = 0, D = -1$
 - ✗ 2. $A = 1, B = 0, C = 25, D = 1$
 - ✓ 3. $A = 1, B = 25, C = 0, D = 1$
 - ✗ 4. $A = 25, B = 1, C = 0, D = 25$

Question ID : 630680214878
Option 1 ID : 630680833535
Option 2 ID : 630680833536
Option 3 ID : 630680833538
Option 4 ID : 630680833537
Status : Answered
Chosen Option : 2

Q.123 Which of the following qualities is missing in a PVC cable as the insulating material for an underground cable?

- Ans
- ✓ 1. Excellent elasticity
 - ✗ 2. High insulation resistance
 - ✗ 3. Good dielectric strength
 - ✗ 4. Inertness to oxygen

Question ID : 630680214880
Option 1 ID : 630680833544
Option 2 ID : 630680833543
Option 3 ID : 630680833545
Option 4 ID : 630680833546
Status : Answered
Chosen Option : 4

Q.124 The 3 R's principle is the new concept in waste management. What do the 3 R's stand for?

- Ans
- ✓ 1. Reduce, Reuse, Recycle
 - ✗ 2. Revenge, Reframe, Recharge
 - ✗ 3. Reroute, Redefine, Rework
 - ✗ 4. Revert, Reframe, Return

Question ID : 630680214853
Option 1 ID : 630680833436
Option 2 ID : 630680833437
Option 3 ID : 630680833438
Option 4 ID : 630680833435
Status : Answered
Chosen Option : 1

Q.125 The step angle for a stepper motor is 2° . If the stepping frequency is 3600 pulses per second, then the shaft speed is:

- Ans
- ✗ 1. 200 rps
 - ✗ 2. 3600 rps
 - ✗ 3. 1800 rps
 - ✓ 4. 20 rps

Question ID : 630680214890
Option 1 ID : 630680833585
Option 2 ID : 630680833583
Option 3 ID : 630680833584
Option 4 ID : 630680833586
Status : Answered
Chosen Option : 3

Q.126 Which of the following materials is an example of paramagnetic material?

- Ans
- ✓ 1. Platinum
 - ✗ 2. Iron
 - ✗ 3. Nickel
 - ✗ 4. Cobalt

Question ID : 630680214845
Option 1 ID : 630680833404
Option 2 ID : 630680833405
Option 3 ID : 630680833406
Option 4 ID : 630680833403
Status : Answered
Chosen Option : 2

Q.127 What are the power supplies needed for the I/O module of PLC?

- Ans
- ☒ 1. +50 V and -50 V
 - ☒ 2. 12 V AC or 24 V AC or 10 V DC
 - ☒ 3. 120 V AC or 220 V AC or 24 V DC
 - ☒ 4. +5 V and -5 V

Question ID : 630680214936
Option 1 ID : 630680833768
Option 2 ID : 630680833769
Option 3 ID : 630680833770
Option 4 ID : 630680833767
Status : Answered
Chosen Option : 3

Q.128 _____ is a digital transducer used for measurement of angular displacement and velocity.

- Ans
- ☒ 1. Shaft encoder
 - ☒ 2. Odometer
 - ☒ 3. Pyrometer
 - ☒ 4. Bolometer

Question ID : 630680214870
Option 1 ID : 630680833503
Option 2 ID : 630680833504
Option 3 ID : 630680833506
Option 4 ID : 630680833505
Status : Not Answered
Chosen Option : --

Q.129 The propagation delay per flip-flop in an eight-flip-flop ripple counter is of the order of 10 ns. Calculate the maximum clock frequency.

- Ans
- ☒ 1. 2.75 MHz
 - ☒ 2. 12.5 MHz
 - ☒ 3. 17.75 MHz
 - ☒ 4. 5.5 MHz

Question ID : 630680214913
Option 1 ID : 630680833675
Option 2 ID : 630680833677
Option 3 ID : 630680833678
Option 4 ID : 630680833676
Status : Not Answered
Chosen Option : --

Q.130 Which of the following is NOT a resistive transducer?

- Ans
- ☐ 1. Strain gauge
 - ☒ 2. Thermocouple
 - ☐ 3. Thermistor
 - ☐ 4. RTD

Question ID : 630680214873
Option 1 ID : 630680833517
Option 2 ID : 630680833518
Option 3 ID : 630680833516
Option 4 ID : 630680833515
Status : Not Answered
Chosen Option : --

Q.131 Which of the following resources has finite supply and it is NOT considered sustainable?

- Ans
- ☐ 1. Wind
 - ☐ 2. Sun
 - ☐ 3. Water
 - ☒ 4. Crude oil

Question ID : 630680214899
Option 1 ID : 630680833619
Option 2 ID : 630680833620
Option 3 ID : 630680833621
Option 4 ID : 630680833622
Status : Answered
Chosen Option : 4

Q.132 Which of the following is NOT a valid advantage of renewable source of energy?

- Ans
- ☐ 1. Unlimited resources
 - ☐ 2. Less pollution
 - ☒ 3. Very high efficiency
 - ☐ 4. Low emission of carbon dioxide

Question ID : 630680214848
Option 1 ID : 630680833417
Option 2 ID : 630680833415
Option 3 ID : 630680833416
Option 4 ID : 630680833418
Status : Answered
Chosen Option : 3

Q.133 The method of improving commutation with the help of interpoles is called _____.

- Ans
- ☒ 1. voltage commutation
 - ☐ 2. phase commutation
 - ☐ 3. current commutation
 - ☐ 4. frequency commutation

Question ID : 630680214889
Option 1 ID : 630680833580
Option 2 ID : 630680833582
Option 3 ID : 630680833579
Option 4 ID : 630680833581
Status : Answered
Chosen Option : 1

Q.134 OTEC stands for _____.

- Ans
- ☐ 1. Ocean Tidal Electricity Creation
 - ☒ 2. Ocean Thermal Energy Conversion
 - ☐ 3. Offshore Thermal Electricity Conversion
 - ☐ 4. Ocean Tidal Energy Creation

Question ID : 630680214875
Option 1 ID : 630680833526
Option 2 ID : 630680833524
Option 3 ID : 630680833525
Option 4 ID : 630680833523
Status : Not Answered
Chosen Option : --

Q.135 For a peak current of 40 kA, the voltage of the pulse due to lightning strike can be as high as:

- Ans
- ☐ 1. 4000 kV
 - ☒ 2. 6000 kV
 - ☐ 3. 1000 kV
 - ☐ 4. 2000 kV

Question ID : 630680214954
Option 1 ID : 630680833841
Option 2 ID : 630680833842
Option 3 ID : 630680833839
Option 4 ID : 630680833840
Status : Answered
Chosen Option : 2

Q.136 Liquid type fuses are filled with:

- Ans
- ☐ 1. carbon dioxide
 - ☐ 2. titanium oxide
 - ☐ 3. titanium tetrachloride
 - ☒ 4. carbon tetrachloride

Question ID : 630680214950

Option 1 ID : 630680833824

Option 2 ID : 630680833826

Option 3 ID : 630680833825

Option 4 ID : 630680833823

Status : Answered

Chosen Option : 3

Q.137 As per rule 55 of the Indian Electricity Rules (1956), a supplier shall NOT permit the frequency of an alternating current supply to vary from the declared frequency by more than:

- Ans
- ☐ 1. 7%
 - ☐ 2. 5%
 - ☐ 3. 12.5%
 - ☒ 4. 3%

Question ID : 630680214937

Option 1 ID : 630680833773

Option 2 ID : 630680833772

Option 3 ID : 630680833774

Option 4 ID : 630680833771

Status : Answered

Chosen Option : 4

Q.138 On a carbon film resistor colour code is:

Blue, Gray, Brown and Gold.

Calculate the value of the resistance.

- Ans
- ☒ 1. 680 Ω , 5% tolerance
 - ☐ 2. 68 Ω , 5% tolerance
 - ☐ 3. 560 Ω , 5% tolerance
 - ☐ 4. 56 Ω , 5% tolerance

Question ID : 630680214871

Option 1 ID : 630680833508

Option 2 ID : 630680833509

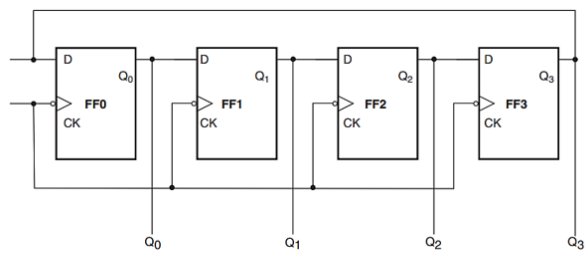
Option 3 ID : 630680833507

Option 4 ID : 630680833510

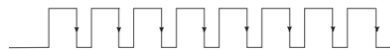
Status : Answered

Chosen Option : 1

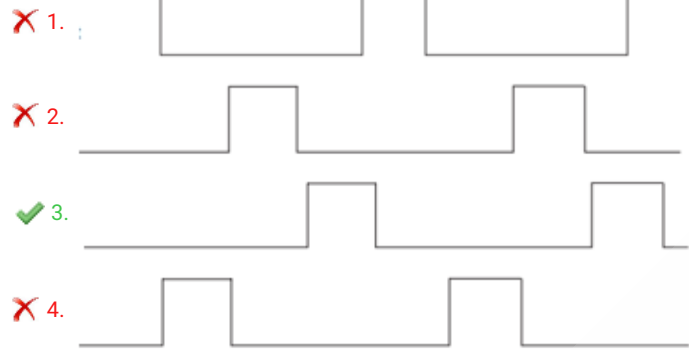
Q.139



Find the output Q₃ in the given counter when the clock is as given below (assume that the flip-flop FF0 is initially set to the logic '1' state and all other flip-flops are reset to the logic '0' state).



Ans



Question ID : 630680214914
Option 1 ID : 630680833679
Option 2 ID : 630680833681
Option 3 ID : 630680833682
Option 4 ID : 630680833680
Status : Not Answered
Chosen Option : --

Q.140 The process of _____ uses powdered limestone to neutralise the acidity of soil affected by acid rain.

Ans

- 1. dripping
- 2. scaling
- 3. liming
- 4. poring

Question ID : 630680214852
Option 1 ID : 630680833431
Option 2 ID : 630680833434
Option 3 ID : 630680833433
Option 4 ID : 630680833432
Status : Not Answered
Chosen Option : --

Q.141 Which of the following is a special characteristic of the tunnel diode?

- Ans
- ☒ 1. Negative resistance
 - ☐ 2. Coherent light
 - ☐ 3. Four layers
 - ☐ 4. Voltage controlled capacitance

Question ID : 630680214900
Option 1 ID : 630680833626
Option 2 ID : 630680833624
Option 3 ID : 630680833625
Option 4 ID : 630680833623
Status : Answered
Chosen Option : 4

Q.142 Among the following insulating materials, which material can withstand the highest temperature?

- Ans
- ☐ 1. Silk
 - ☐ 2. Paper
 - ☐ 3. Cotton
 - ☒ 4. Quartz

Question ID : 630680214842
Option 1 ID : 630680833392
Option 2 ID : 630680833393
Option 3 ID : 630680833391
Option 4 ID : 630680833394
Status : Answered
Chosen Option : 4

Q.143 Which of the following components of wind power is used to rotate the nacelle to move in the direction of wind to extract the maximum energy from wind?

- Ans
- ☐ 1. Anemometer
 - ☐ 2. Wind vane
 - ☒ 3. Yaw drive
 - ☐ 4. Pitch drive

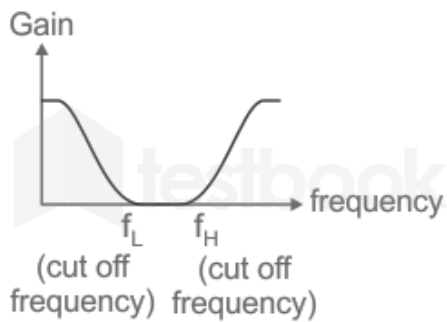
Question ID : 630680214979
Option 1 ID : 630680833939
Option 2 ID : 630680833941
Option 3 ID : 630680833942
Option 4 ID : 630680833940
Status : Not Answered
Chosen Option : --

Q.144 Convert the binary number $(1011)_2$ into Gray code.

- Ans
- ☒ 1. 1101
 - ☒ 2. 1001
 - ☒ 3. 0110
 - ☒ 4. 1110

Question ID : 630680214909
Option 1 ID : 630680833660
Option 2 ID : 630680833661
Option 3 ID : 630680833662
Option 4 ID : 630680833659
Status : Not Answered
Chosen Option : --

Q.145 Which filter exhibits the characteristics shown below?



- Ans
- ☒ 1. Low pass
 - ☒ 2. Band pass
 - ☒ 3. High pass
 - ☒ 4. Band reject

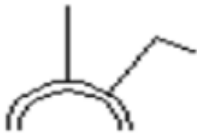
Question ID : 630680214837
Option 1 ID : 630680833372
Option 2 ID : 630680833373
Option 3 ID : 630680833371
Option 4 ID : 630680833374
Status : Not Answered
Chosen Option : --

Q.146 In a series RLC circuit, $R = 50\ \Omega$ and inductive reactance $X_L = 20\ \Omega$. Find the capacitive reactance X_C at resonance.

- Ans
- ☒ 1. $50\ \Omega$
 - ☒ 2. $30\ \Omega$
 - ☒ 3. $20\ \Omega$
 - ☒ 4. $70\ \Omega$

Question ID : 630680214832
Option 1 ID : 630680833352
Option 2 ID : 630680833353
Option 3 ID : 630680833354
Option 4 ID : 630680833351
Status : Answered
Chosen Option : 4

Q.147



The above symbol represents:

- Ans
- ☒ 1. socket outlet 5 A
 - ☒ 2. socket outlet 5 A with switch
 - ☒ 3. socket outlet 15 A
 - ☒ 4. socket outlet 15 A with switch

Question ID : 630680214939
Option 1 ID : 630680833779
Option 2 ID : 630680833780
Option 3 ID : 630680833781
Option 4 ID : 630680833782
Status : Answered
Chosen Option : 4

Q.148 A synchronous machine is called a doubly-excited machine because:

- Ans
- ☒ 1. it has two sets of rotor poles
 - ☒ 2. it needs twice the normal exciting voltage
 - ☒ 3. it needs twice the normal exciting current
 - ☒ 4. its stator and rotor both are excited

Question ID : 630680214885
Option 1 ID : 630680833565
Option 2 ID : 630680833564
Option 3 ID : 630680833563
Option 4 ID : 630680833566
Status : Answered
Chosen Option : 4

Q.149 The transition temperature of a superconductor is:

Ans ☒ 1.

inversely proportional to the square root of the isotopic mass

☒ 2. directly proportional to the square root of the isotopic mass

☒ 3. inversely proportional to the isotopic mass

☒ 4. directly proportional to the isotopic mass

Question ID : 630680214846

Option 1 ID : 630680833407

Option 2 ID : 630680833408

Option 3 ID : 630680833409

Option 4 ID : 630680833410

Status : Not Answered

Chosen Option : --

Q.150 If there are 20 wiring points, the insulation resistance measured by a 500 V megger should NOT be less than:

Ans ☒ 1. 0.5 megohms

☒ 2. 2 megohms

☒ 3. 5 megohms

☒ 4. 2.5 megohms

Question ID : 630680214971

Option 1 ID : 630680833907

Option 2 ID : 630680833908

Option 3 ID : 630680833910

Option 4 ID : 630680833909

Status : Not Answered

Chosen Option : --

Q.151 Which of the following terms is NOT related to a P-N junction diode?

Ans ☒ 1. Gate current

☒ 2. Anode

☒ 3. Knee voltage

☒ 4. Cathode

Question ID : 630680214861

Option 1 ID : 630680833470

Option 2 ID : 630680833467

Option 3 ID : 630680833469

Option 4 ID : 630680833468

Status : Answered

Chosen Option : 1

Q.152 Which of the following is NOT one of the essential features of switchgears?

- Ans
- ☒ 1. Complete reliability
 - ☒ 2. No discrimination
 - ☒ 3. Provision of manual control
 - ☒ 4. Quick operation

Question ID : 630680214947
Option 1 ID : 630680833811
Option 2 ID : 630680833812
Option 3 ID : 630680833814
Option 4 ID : 630680833813
Status : Answered
Chosen Option : 1

Q.153 What is the thickness of the base of solar cells?

- Ans
- ☒ 1. More than 100 mm
 - ☒ 2. More than 100 μm
 - ☒ 3. Less than 1 μm
 - ☒ 4. Less than 1 mm

Question ID : 630680214975
Option 1 ID : 630680833926
Option 2 ID : 630680833925
Option 3 ID : 630680833923
Option 4 ID : 630680833924
Status : Not Answered
Chosen Option : --

Q.154 Which is the best choice of a two-port parameter, when two-ports are connected in parallel-parallel configuration?

- Ans
- ☒ 1. Y-Parameters
 - ☒ 2. Z- Parameters
 - ☒ 3. h-Parameters
 - ☒ 4. T-parameters

Question ID : 630680214835
Option 1 ID : 630680833363
Option 2 ID : 630680833364
Option 3 ID : 630680833365
Option 4 ID : 630680833366
Status : Not Answered
Chosen Option : --

Q.155 Which of the following is NOT one of the methods employed in MIG welding?

- Ans
- ☒ 1. Bare-wire electrode process
 - ☒ 2. Magnetic flux process
 - ☒ 3. Dielectric process
 - ☒ 4. Flux-cored electrode process

Question ID : 630680214923
Option 1 ID : 630680833715
Option 2 ID : 630680833717
Option 3 ID : 630680833718
Option 4 ID : 630680833716
Status : Not Answered
Chosen Option : --

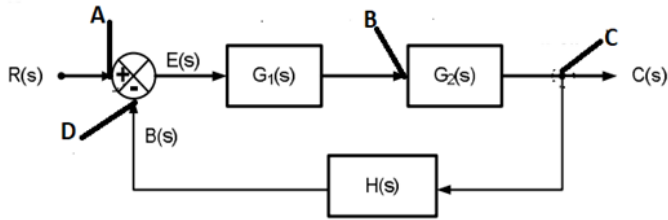
Q.156 In the Doherty rate method, the total charge to be made from the consumer is _____.

- Ans
- ☒ 1. split into two parts
 - ☒ 2. split into three parts
 - ☒ 3. split into four parts
 - ☒ 4. kept fixed and independent of usage

Question ID : 630680214883
Option 1 ID : 630680833556
Option 2 ID : 630680833557
Option 3 ID : 630680833558
Option 4 ID : 630680833555
Status : Not Answered
Chosen Option : --



Q.157



Which of the following points in the block diagram of the control system is a take off point?

- Ans
- ☒ 1. B
 - ☒ 2. A
 - ☒ 3. D
 - ☒ 4. C

Question ID : 630680214958

Option 1 ID : 630680833856

Option 2 ID : 630680833855

Option 3 ID : 630680833858

Option 4 ID : 630680833857

Status : Not Answered

Chosen Option : --

Q.158 A 6-pole, 50-Hz, 3-phase induction motor is running at 950 rpm and has rotor Cu loss of 5 kW. What will be the rotor input?

- Ans
- ☒ 1. 105 kW
 - ☒ 2. 100 kW
 - ☒ 3. 125 kW
 - ☒ 4. 95 kW

Question ID : 630680214904

Option 1 ID : 630680833641

Option 2 ID : 630680833640

Option 3 ID : 630680833642

Option 4 ID : 630680833639

Status : Not Answered

Chosen Option : --

Q.159 On the basis of the rotor construction, a 3-phase induction motor can be classified into _____ types.

- Ans
- ☒ 1. 5
 - ☒ 2. 2
 - ☒ 3. 3
 - ☒ 4. 4

Question ID : 630680214888

Option 1 ID : 630680833578

Option 2 ID : 630680833575

Option 3 ID : 630680833576

Option 4 ID : 630680833577

Status : Answered

Chosen Option : 2

Q.160 In a transformer, the process of bunching all laminated sheets together is known as _____.

- Ans
- ☐ 1. packing
 - ☒ 2. stacking
 - ☐ 3. riveting
 - ☐ 4. framing

Question ID : 630680214857
Option 1 ID : 630680833451
Option 2 ID : 630680833452
Option 3 ID : 630680833454
Option 4 ID : 630680833453
Status : Answered
Chosen Option : 3

Section : Numerical,G.K & Reasoning

Q.1 If a 9-digit number $9524x37y8$ is divisible by 72, then what is the maximum possible value of $(2x + 3y)$?

- Ans
- ☐ 1. 22
 - ☐ 2. 18
 - ☐ 3. 16
 - ☒ 4. 20

Question ID : 630680214984
Option 1 ID : 630680833962
Option 2 ID : 630680833960
Option 3 ID : 630680833959
Option 4 ID : 630680833961
Status : Not Answered
Chosen Option : --

Q.2 The total surface area of a solid metallic right circular cylinder is $672\pi\text{ cm}^2$ and its height is 50 cm. Its volume is equal to 40% of the volume of a sphere. What is the diameter (in cm) of the sphere?

- Ans
- ☐ 1. 32
 - ☐ 2. 40
 - ☒ 3. 30
 - ☐ 4. 28

Question ID : 630680214989
Option 1 ID : 630680833981
Option 2 ID : 630680833982
Option 3 ID : 630680833980
Option 4 ID : 630680833979
Status : Not Answered
Chosen Option : --

Q.3 In an election between two candidates, 10% of the total voters did not cast their votes. 15% of the votes polled were found to be invalid. The winning candidate obtained 52% of the valid votes and won by a majority of 3825 votes. The number of valid votes was:

- Ans** ☒ 1. 95625
☒ 2. 91800
☒ 3. 94375
☒ 4. 90600

Question ID : 630680214987
Option 1 ID : 630680833974
Option 2 ID : 630680833972
Option 3 ID : 630680833973
Option 4 ID : 630680833971
Status : Not Answered
Chosen Option : --

Q.4 Priya's expenditure is 125% more than her savings. If her savings increase by 38% and income increases by 20%, then by what per cent does her expenditure increase?

- Ans** ☒ 1. 10%
☒ 2. 18%
☒ 3. 9%
☒ 4. 12%

Question ID : 630680214986
Option 1 ID : 630680833968
Option 2 ID : 630680833970
Option 3 ID : 630680833969
Option 4 ID : 630680833967
Status : Not Answered
Chosen Option : --

Q.5 Let x be a number between 2100 and 2200. When x is divided by 18, 20 and 27, the remainder in each case is 11. What is the sum of digits of x ?

- Ans** ☒ 1. 14
☒ 2. 13
☒ 3. 11
☒ 4. 9

Question ID : 630680214985
Option 1 ID : 630680833966
Option 2 ID : 630680833965
Option 3 ID : 630680833964
Option 4 ID : 630680833963
Status : Not Answered
Chosen Option : --

Q.6 A man sold a table for ₹2,565 at a loss of 10% and a chair for ₹1,610 at a gain of 40%. What is his percentage gain in the entire transaction?

- Ans**
- ☒ 1. 3.625%
 - ☒ 2. 3.75%
 - ☒ 3. 4.375%
 - ☒ 4. 4.25%

Question ID : 630680214988

Option 1 ID : 630680833975

Option 2 ID : 630680833978

Option 3 ID : 630680833976

Option 4 ID : 630680833977

Status : Not Answered

Chosen Option : --

Q.7 MS Swaminathan is also known as the:

- Ans**
- ☒ 1. Tiger man of India
 - ☒ 2. Bird man of India
 - ☒ 3. Father of the Indian Economics
 - ☒ 4. Father of the Green Revolution

Question ID : 630680214994

Option 1 ID : 630680834002

Option 2 ID : 630680833999

Option 3 ID : 630680834000

Option 4 ID : 630680834001

Status : Not Answered

Chosen Option : --

Q.8 Which of the following countries will host the 13th edition of the ICC Men's ODI World Cup 2023?

- Ans**
- ☒ 1. Australia
 - ☒ 2. England
 - ☒ 3. South Africa
 - ☒ 4. India

Question ID : 630680214990

Option 1 ID : 630680833984

Option 2 ID : 630680833985

Option 3 ID : 630680833986

Option 4 ID : 630680833983

Status : Not Answered

Chosen Option : --

Q.9 The chemical formula of Bleaching powder does NOT consist of which of the following elements?

- Ans
- ☒ 1. Oxygen
 - ☒ 2. Hydrogen
 - ☒ 3. Chlorine
 - ☒ 4. Calcium

Question ID : 630680214996
Option 1 ID : 630680834009
Option 2 ID : 630680834010
Option 3 ID : 630680834008
Option 4 ID : 630680834007
Status : Not Answered
Chosen Option : --

Q.10 The Economic Survey 2023, prepared by the Department of Economic Affairs (DEA) under the guidance of Chief Economic Advisor _____.

- Ans
- ☒ 1. Krishnamurthy Subramanian
 - ☒ 2. V Anantha Nageswaran
 - ☒ 3. A N Gopalakrishnan
 - ☒ 4. B V R Subrahmanyam

Question ID : 630680214991
Option 1 ID : 630680833989
Option 2 ID : 630680833988
Option 3 ID : 630680833990
Option 4 ID : 630680833987
Status : Not Answered
Chosen Option : --

Q.11 Who among the following was the Viceroy during the Simla Conference under British Rule in 1945?

- Ans
- ☒ 1. Lord Wavell
 - ☒ 2. Lord Linlithgow
 - ☒ 3. Lord Willingdon
 - ☒ 4. Lord Mountbatten

Question ID : 630680214992
Option 1 ID : 630680833992
Option 2 ID : 630680833993
Option 3 ID : 630680833994
Option 4 ID : 630680833991
Status : Not Answered
Chosen Option : --

Q.12 Abhinaya Darpanam is a Sanskrit treatise on Indian classical dances authored by:

- Ans
- ☒ 1. Srivijaya
 - ☒ 2. Bhattoji Diksita
 - ☒ 3. Mahendravarman
 - ☒ 4. Nandikeshvara

Question ID : 630680214993
Option 1 ID : 630680833996
Option 2 ID : 630680833997
Option 3 ID : 630680833998
Option 4 ID : 630680833995
Status : Not Answered
Chosen Option : --

Q.13 Jaintia hills are part of:

- Ans
- ☒ 1. Deccan Plateau
 - ☒ 2. Meghalaya Plateau
 - ☒ 3. Satpura Range
 - ☒ 4. Zaskar Range

Question ID : 630680214995
Option 1 ID : 630680834004
Option 2 ID : 630680834005
Option 3 ID : 630680834006
Option 4 ID : 630680834003
Status : Not Answered
Chosen Option : --

Q.14 Which of the following is true about the Article of the Indian Constitution?

- Ans
- ☒ 1. Article 17 - Prohibition of discrimination on grounds of religion, race, caste, sex, or place of birth
 - ☒ 2. Article 15 - Abolition of Untouchability
 - ☒ 3. Article 23A - Right to education
 - ☒ 4. Article 22 - Protection against arrest and detention in certain cases.

Question ID : 630680214997
Option 1 ID : 630680834011
Option 2 ID : 630680834012
Option 3 ID : 630680834013
Option 4 ID : 630680834014
Status : Not Answered
Chosen Option : --

Q.15 Select the correct mirror image of the given combination when the mirror is placed at 'PQ' as shown.

VERACITY |
P
Q

- Ans
- ✓ 1. Y T I C A R E V
 - ✗ 2. Y T I C A R E V
 - ✗ 3. Y T I C A R E V
 - ✗ 4. Y T I C A R E V

Question ID : 630680215001
Option 1 ID : 630680834030
Option 2 ID : 630680834028
Option 3 ID : 630680834027
Option 4 ID : 630680834029
Status : Answered
Chosen Option : 1

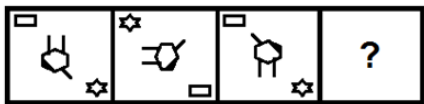
Q.16 Select the number from among the given options that can replace the question mark (?) in the following series.

19, 24, 34, 51, 77, ?

- Ans
- ✗ 1. 121
 - ✓ 2. 114
 - ✗ 3. 111
 - ✗ 4. 132

Question ID : 630680215002
Option 1 ID : 630680834033
Option 2 ID : 630680834032
Option 3 ID : 630680834031
Option 4 ID : 630680834034
Status : Not Answered
Chosen Option : --

Q.17 Select the figure from among the given options that can replace the question mark (?) in the following series.



Ans

- ✗ 1.
- ✗ 2.
- ✓ 3.
- ✗ 4.

Question ID : 630680215000
Option 1 ID : 630680834023
Option 2 ID : 630680834026
Option 3 ID : 630680834024
Option 4 ID : 630680834025
Status : Answered
Chosen Option : 3

Q.18 Vaidehi walks 23 m towards the north from her home, then she turns right and walks 41 m. After that, she turns left and walks 20 m. Then she turns left and walks 41 m. Then she turns right and walks 18 m. How far is she now from her home?

- ✗ 1.

59 m
- ✓ 2.

61 m
- ✗ 3.

64 m
- ✗ 4.

67 m

Question ID : 630680214999
Option 1 ID : 630680834019
Option 2 ID : 630680834020
Option 3 ID : 630680834021
Option 4 ID : 630680834022
Status : Answered
Chosen Option : 2

Q.19 In a certain code language, 'ROAR' is written as 'ILZI', and 'MAND' is written as 'NZMW'. How will 'FLOWER' be written in that language?

- Ans
- ✓ 1. UOLDVI
 - ✗ 2. YOLDUI
 - ✗ 3. UOLEVJ
 - ✗ 4. UPLDVH

Question ID : 630680214998
Option 1 ID : 630680834016
Option 2 ID : 630680834015
Option 3 ID : 630680834017
Option 4 ID : 630680834018
Status : Answered
Chosen Option : 1

Q.20 Select the combination of letters that when sequentially placed in the blanks of the given series will complete the series.
B _ E _ Z H _ _ N E W _ H Y B N _ W Z _ Y B _ E W _ H Y

- Ans
- ✗ 1. NWZBYEHNZ
 - ✓ 2. NwybzEHNZ
 - ✗ 3. NwyBENHNZ
 - ✗ 4. NwyBZEZNH

Question ID : 630680215003
Option 1 ID : 630680834036
Option 2 ID : 630680834038
Option 3 ID : 630680834037
Option 4 ID : 630680834035
Status : Answered
Chosen Option : 2

Section : English Language

Q.1 Identify the INCORRECTLY spelt word.

- Ans
- ✓ 1. Imaculate
 - ✗ 2. Exaggerate
 - ✗ 3. Unbiased
 - ✗ 4. Eradicate

Question ID : 630680215015
Option 1 ID : 630680834086
Option 2 ID : 630680834083
Option 3 ID : 630680834084
Option 4 ID : 630680834085
Status : Not Answered
Chosen Option : --

Q.2 Select the most appropriate idiom that can substitute the underlined segment in the given sentence.

When you carry cash while travelling, you must be on the alert.

- Ans
- ☐ 1. keep pace with
 - ☒ 2. keep your eyes open
 - ☐ 3. keep your fingers crossed
 - ☐ 4. keep up appearances

Question ID : 630680215018
Option 1 ID : 630680834096
Option 2 ID : 630680834097
Option 3 ID : 630680834098
Option 4 ID : 630680834095
Status : Not Answered
Chosen Option : --

Q.3 Parts of the following sentence have been given as options. Select the option that contains an error.

She refused to sign the contract at these terms.

- Ans
- ☐ 1. the contract
 - ☐ 2. to sign
 - ☒ 3. at these terms
 - ☐ 4. She refused

Question ID : 630680215008
Option 1 ID : 630680834057
Option 2 ID : 630680834056
Option 3 ID : 630680834058
Option 4 ID : 630680834055
Status : Not Answered
Chosen Option : --

Q.4 Parts of a sentence are given below in jumbled order. Arrange the parts in the correct order to form a meaningful sentence.

- A. takes with it people who are interested in
- B. concerning the terrain, weather and life forms
- C. of science for recording their observations
- D. every large mountaineering expedition
- E. biology, botany, geology and other branches

- Ans
- ☐ 1. BCDAE
 - ☐ 2. ECADB
 - ☐ 3. DCAEB
 - ☒ 4. DAECB

Question ID : 630680215010
Option 1 ID : 630680834063
Option 2 ID : 630680834065
Option 3 ID : 630680834064
Option 4 ID : 630680834066
Status : Not Answered
Chosen Option : --

Q.5 Parts of a sentence are given below in jumbled order. Arrange the parts in the correct order to form a meaningful sentence.

- A. and it seldom did
- B. and make merry
- C. if any money came his way
- D. he would call all his friends

Ans ☒ 1. CDBA
☒ 2. CADB
☒ 3. DCAB
☒ 4. DABC

Question ID : 630680215019
Option 1 ID : 630680834099
Option 2 ID : 630680834101
Option 3 ID : 630680834102
Option 4 ID : 630680834100
Status : Not Answered
Chosen Option : --

Q.6 Parts of the following sentence have been given as options. Select the option that contains an error.

He was a debtor and owing every neighbour some money.

Ans ☒ 1. some money
☒ 2. every neighbour
☒ 3. and owing
☒ 4. He was a debtor

Question ID : 630680215017
Option 1 ID : 630680834094
Option 2 ID : 630680834093
Option 3 ID : 630680834092
Option 4 ID : 630680834091
Status : Not Answered
Chosen Option : --

Q.7 Select the most appropriate synonym of the given word.

Peevish

Ans ☒ 1. Hideous
☒ 2. Ridiculous
☒ 3. Meagre
☒ 4. Irritable

Question ID : 630680215013
Option 1 ID : 630680834078
Option 2 ID : 630680834076
Option 3 ID : 630680834077
Option 4 ID : 630680834075
Status : Not Answered
Chosen Option : --

Q.8 Select the most appropriate idiom that can substitute the underlined segment in the given sentence.

You will suffer loss or hurt if you invest more money in your friend's business.

- Ans
- ☒ 1. beat a retreat
 - ☒ 2. bury the hatchet
 - ☒ 3. burn your fingers
 - ☒ 4. build castles in the air

Question ID : 630680215011
Option 1 ID : 630680834069
Option 2 ID : 630680834067
Option 3 ID : 630680834068
Option 4 ID : 630680834070
Status : Not Answered
Chosen Option : --

Q.9 Parts of the following sentence has been given as options. One of them may contain a grammatical error. Select the part that contains the error from the given options. If you don't find any error, mark 'No error' as your answer.

The farm labourers complained for the oppressive laws.

- Ans
- ☒ 1. The farm labourers
 - ☒ 2. the oppressive laws
 - ☒ 3. No error
 - ☒ 4. complained for

Question ID : 630680215005
Option 1 ID : 630680834043
Option 2 ID : 630680834045
Option 3 ID : 630680834046
Option 4 ID : 630680834044
Status : Not Answered
Chosen Option : --

Q.10 Select the most appropriate option to fill in the blank.

What _____ great disappointment the result was for me!

- Ans
- ☒ 1. an
 - ☒ 2. a
 - ☒ 3. the
 - ☒ 4. one

Question ID : 630680215004
Option 1 ID : 630680834039
Option 2 ID : 630680834040
Option 3 ID : 630680834041
Option 4 ID : 630680834042
Status : Not Answered
Chosen Option : --

Q.11 Select the most appropriate ANTONYM of the given word.

Precious

- Ans ☒ 1. Worthless
- ☐ 2. Rational
- ☐ 3. Miserable
- ☐ 4. Fickle

Question ID : 630680215012
Option 1 ID : 630680834073
Option 2 ID : 630680834072
Option 3 ID : 630680834074
Option 4 ID : 630680834071
Status : Not Answered
Chosen Option : --

Q.12 Parts of the following sentence has been given as options. One of them may contain a grammatical error. Select the part that contains the error from the given options. If you don't find any error, mark 'No error' as your answer.

My watch has being running slow since morning so I am late for work.

- Ans ☐ 1. so I am late for work
- ☐ 2. No error
- ☒ 3. My watch has being running
- ☐ 4. slow since morning

Question ID : 630680215007
Option 1 ID : 630680834053
Option 2 ID : 630680834054
Option 3 ID : 630680834051
Option 4 ID : 630680834052
Status : Not Answered
Chosen Option : --

Q.13 Parts of the following sentence has been given as options. One of them may contain a grammatical error. Select the part that contains the error from the given options. If you don't find any error, mark 'No error' as your answer.

The ground under my feet started shaking calmly.

- Ans ☐ 1. under my feet
- ☒ 2. started shaking calmly
- ☐ 3. The ground
- ☐ 4. No error

Question ID : 630680215006
Option 1 ID : 630680834048
Option 2 ID : 630680834049
Option 3 ID : 630680834047
Option 4 ID : 630680834050
Status : Not Answered
Chosen Option : --

Q.14 Select the most appropriate option to fill in the blanks.

_____ idea struck me as I was taking _____ stroll in the garden.

- Ans
- ☒ 1. A; the
 - ☒ 2. An; a
 - ☒ 3. No word required
 - ☒ 4. The; the

Question ID : 630680215016
Option 1 ID : 630680834088
Option 2 ID : 630680834087
Option 3 ID : 630680834090
Option 4 ID : 630680834089
Status : Not Answered
Chosen Option : --

Q.15 Identify the INCORRECTLY spelt word.

- Ans
- ☒ 1. Deceit
 - ☒ 2. Devoid
 - ☒ 3. Deligent
 - ☒ 4. Distinct

Question ID : 630680215014
Option 1 ID : 630680834079
Option 2 ID : 630680834082
Option 3 ID : 630680834081
Option 4 ID : 630680834080
Status : Not Answered
Chosen Option : --

Q.16 Parts of the following sentence have been given as options. Select the option that contains an error.

Nobody knew why the crowd had assemble outside the hospital.

- Ans
- ☒ 1. why the crowd
 - ☒ 2. Nobody knew
 - ☒ 3. outside the hospital
 - ☒ 4. had assemble

Question ID : 630680215009
Option 1 ID : 630680834060
Option 2 ID : 630680834059
Option 3 ID : 630680834062
Option 4 ID : 630680834061
Status : Not Answered
Chosen Option : --

Comprehension:

Read the given passage and answer the questions that follow.

Everybody agreed that the beast was more than a nuisance. It had attacked and killed, on numerous occasions, goats and sheep grazing in the field. But for it to attack animals in the village at night raised genuine fears. The general consensus was that the lion should be hunted down and got rid of.

Easier said than done. As the lion sprang it caught one man, brought him to the ground and lay upon him. Chaka, who was on the outside wing, came running up, and first of all tried to stop one of the men and get him to join in the rescue, but it was evident that the man could neither speak nor stop; flight was the only thing for him. Chaka ran on shouting so that the lion might hear that someone was coming, and thus be hindered from killing his victim at once.

When Chaka was still a little way off the lion roared once more, and his roar made the fugitives quicken their speed, for they thought that the lion was there close behind them. With a roar the lion sprang, his claws bared ready to devour a man. The lion sprang once more, and this time he was upon him.

As Chaka was entirely without fear, he simply waited for it and let it jump, but while it was in the air he moved slightly to one side. The lion continued in its original course, for, not being a bird, it could not change its course in the air. While it was still in the air, and just before it reached the ground, Chaka stabbed it behind the shoulders with his spear, so that when it reached the ground it fell – a mighty fall. While it was dying its roars were terrible to hear. Chaka looked at it without fear: it did not seem as if he was looking at a deadly beast of prey which had just attacked him.

The crowd of men had just reached the village when Chaka stabbed the lion, and its last terrible roars made all the fugitives rush into the huts with never a look behind...

SubQuestion No : 17

Q.17 Why did Chaka shout as he ran towards the lion?

- Ans**
- ☒ 1. To stab the beast with his spear
 - ☒ 2. To make the villagers run away faster
 - ☒ 3. To stop the lion from killing his victim
 - ☒ 4. To gather courage to attack the lion

Question ID : 630680215022

Option 1 ID : 630680834110

Option 2 ID : 630680834108

Option 3 ID : 630680834109

Option 4 ID : 630680834107

Status : Answered

Chosen Option : 3



Comprehension:

Read the given passage and answer the questions that follow.

Everybody agreed that the beast was more than a nuisance. It had attacked and killed, on numerous occasions, goats and sheep grazing in the field. But for it to attack animals in the village at night raised genuine fears. The general consensus was that the lion should be hunted down and got rid of.

Easier said than done. As the lion sprang it caught one man, brought him to the ground and lay upon him. Chaka, who was on the outside wing, came running up, and first of all tried to stop one of the men and get him to join in the rescue, but it was evident that the man could neither speak nor stop; flight was the only thing for him. Chaka ran on shouting so that the lion might hear that someone was coming, and thus be hindered from killing his victim at once.

When Chaka was still a little way off the lion roared once more, and his roar made the fugitives quicken their speed, for they thought that the lion was there close behind them. With a roar the lion sprang, his claws bared ready to devour a man. The lion sprang once more, and this time he was upon him.

As Chaka was entirely without fear, he simply waited for it and let it jump, but while it was in the air he moved slightly to one side. The lion continued in its original course, for, not being a bird, it could not change its course in the air. While it was still in the air, and just before it reached the ground, Chaka stabbed it behind the shoulders with his spear, so that when it reached the ground it fell – a mighty fall. While it was dying its roars were terrible to hear. Chaka looked at it without fear: it did not seem as if he was looking at a deadly beast of prey which had just attacked him.

The crowd of men had just reached the village when Chaka stabbed the lion, and its last terrible roars made all the fugitives rush into the huts with never a look behind...

SubQuestion No : 18

Q.18 How did Chaka feel when the beast sprang upon him?

- Ans ☒ 1. Fearless
- ☐ 2. Terrified
- ☐ 3. Angry
- ☐ 4. Speechless

Question ID : 630680215023

Option 1 ID : 630680834114

Option 2 ID : 630680834113

Option 3 ID : 630680834111

Option 4 ID : 630680834112

Status : Answered

Chosen Option : 1



Comprehension:

Read the given passage and answer the questions that follow.

Everybody agreed that the beast was more than a nuisance. It had attacked and killed, on numerous occasions, goats and sheep grazing in the field. But for it to attack animals in the village at night raised genuine fears. The general consensus was that the lion should be hunted down and got rid of.

Easier said than done. As the lion sprang it caught one man, brought him to the ground and lay upon him. Chaka, who was on the outside wing, came running up, and first of all tried to stop one of the men and get him to join in the rescue, but it was evident that the man could neither speak nor stop; flight was the only thing for him. Chaka ran on shouting so that the lion might hear that someone was coming, and thus be hindered from killing his victim at once.

When Chaka was still a little way off the lion roared once more, and his roar made the fugitives quicken their speed, for they thought that the lion was there close behind them. With a roar the lion sprang, his claws bared ready to devour a man. The lion sprang once more, and this time he was upon him.

As Chaka was entirely without fear, he simply waited for it and let it jump, but while it was in the air he moved slightly to one side. The lion continued in its original course, for, not being a bird, it could not change its course in the air. While it was still in the air, and just before it reached the ground, Chaka stabbed it behind the shoulders with his spear, so that when it reached the ground it fell – a mighty fall. While it was dying its roars were terrible to hear. Chaka looked at it without fear: it did not seem as if he was looking at a deadly beast of prey which had just attacked him.

The crowd of men had just reached the village when Chaka stabbed the lion, and its last terrible roars made all the fugitives rush into the huts with never a look behind...

SubQuestion No : 19

Q.19 What made the villagers really fear the lion?

- Ans ☒ 1. It suddenly jumped on people.
- ☒ 2. It attacked animals during the night.
- ☒ 3. It shook the earth with its roars.
- ☒ 4. It killed the cattle grazing in the fields.

Question ID : 630680215021
Option 1 ID : 630680834105
Option 2 ID : 630680834104
Option 3 ID : 630680834106
Option 4 ID : 630680834103
Status : Not Answered
Chosen Option : --



Comprehension:

Read the given passage and answer the questions that follow.

Everybody agreed that the beast was more than a nuisance. It had attacked and killed, on numerous occasions, goats and sheep grazing in the field. But for it to attack animals in the village at night raised genuine fears. The general consensus was that the lion should be hunted down and got rid of.

Easier said than done. As the lion sprang it caught one man, brought him to the ground and lay upon him. Chaka, who was on the outside wing, came running up, and first of all tried to stop one of the men and get him to join in the rescue, but it was evident that the man could neither speak nor stop; flight was the only thing for him. Chaka ran on shouting so that the lion might hear that someone was coming, and thus be hindered from killing his victim at once.

When Chaka was still a little way off the lion roared once more, and his roar made the fugitives quicken their speed, for they thought that the lion was there close behind them. With a roar the lion sprang, his claws bared ready to devour a man. The lion sprang once more, and this time he was upon him.

As Chaka was entirely without fear, he simply waited for it and let it jump, but while it was in the air he moved slightly to one side. The lion continued in its original course, for, not being a bird, it could not change its course in the air. While it was still in the air, and just before it reached the ground, Chaka stabbed it behind the shoulders with his spear, so that when it reached the ground it fell – a mighty fall. While it was dying its roars were terrible to hear. Chaka looked at it without fear: it did not seem as if he was looking at a deadly beast of prey which had just attacked him.

The crowd of men had just reached the village when Chaka stabbed the lion, and its last terrible roars made all the fugitives rush into the huts with never a look behind...

SubQuestion No : 20

Q.20 What type of passage is it?

- Ans
- ☒ 1. Discursive
 - ☒ 2. Persuasive
 - ☒ 3. Narrative
 - ☒ 4. Informative

Question ID : 630680215024

Option 1 ID : 630680834117

Option 2 ID : 630680834115

Option 3 ID : 630680834116

Option 4 ID : 630680834118

Status : Answered

Chosen Option : 4