



# Teachingninja.in



**Latest Govt Job updates**



**Private Job updates**



**Free Mock tests available**



**Visit - [teachingninja.in](https://teachingninja.in)**

**UPPCL JE  
Previous  
Paper 5 (Held  
ON\_ 11 Nov  
2016)**



1. A number of filtration wells are connected through porous pipes to a sump well known as \_\_\_\_\_ .  
आपस द्रपूर्ण पाइपों से , \_\_\_\_\_ ।

- a) Open well /
- b) Spring /
- c) Ranney well /
- d) Jack well /

Correct Answer :- Jack well /

2. Which of the following gas develops explosive tendency in water?  
से कौनसी गैस पान ?

- a) Sulphur / सल्फर
- b) Methane /
- c) Oxygen / ऑक्सीजन
- d) Fluorine /

Correct Answer :- Methane /

3. Which of the following is used to determine the small colour densities?  
से किसक सघ प ?

- a) Turbidimeter /
- b) Nephelometer /
- c) Tintometer /
- d) Hygrometer /

Correct Answer :- Tintometer /

4. If area of the catchment is 62.5 sq.mm and axial length of the catchment is 10 mm, the form factor will be:-  
62.5 sq.mm औ 10 mm है, ?

- a) 0.625
- b) 0.31
- c) 6.25
- d) 1

Correct Answer :- 0.625

5. The pitch of the roof truss is usually \_\_\_\_\_ of its slope.  
ट्रस की पिच साम स \_\_\_\_\_ ।

- a) half / आधी
- b) one fourth /
- c) double /
- d) three-fourth /

Correct Answer :- one fourth /

6. Where does the Mach number finds its maximum significance?

संख प \_\_\_\_\_ ।

- a) Flow in closed conduit pipe / पाइप
- b) In cavitation studies /
- c) Where fluid compressibility is important /
- d) In capillary studies / पिलर

Correct Answer :- Where fluid compressibility is important /

7. In coarse gravels, specific retention is:-

प , \_\_\_\_\_

- a) More /
- b) Less /
- c) Moderate / साम
- d) More or less /

Correct Answer :- Less /

8. As compared to Stone masonry, brick masonry is more:-

\_\_\_\_\_ ।

- a) Fire resistant /
- b) Costly /
- c) Skilled practice /
- d) Strong /

Correct Answer :- Fire resistant /

9. If both ends of a 20 m long column are fixed, for Euler's load calculations, its effective length is taken to be:-

स 20 m सिरे फिक्स हैं, प 3, स \_\_\_\_\_ ।

- a) 20 m
- b) 40 m
- c) 10 m
- d)  $20\sqrt{2}$  m

Correct Answer :- 10 m

10. \_\_\_\_\_ is particularly desirable in the materials which are subjected to shock loading.

\_\_\_\_\_ पद आघ से ।

- a) Ductility /
- b) Brittleness /
- c) Malleability / आघ
- d) Toughness / टपन

Correct Answer :- Toughness / टपन

11. If pressure due to submerged weight of the soil is equal to the seepage pressure, the effective pressure:-

से , सीपेज , :-

- a) Remains the same / सम
- b) Becomes zero /
- c) Becomes unity /
- d) Becomes maximum /

Correct Answer :- Becomes zero /

12. Which of the following will least affect the per capita demand of water in a city?

से पान आवश सबसे ?

- a) Size of the city / आक
- b) Type of population / नसँख
- c) Climatic conditions /
- d) Festivals celebrated /

Correct Answer :- Festivals celebrated /

13. Cement and water when poured into the form work for hardening normally takes \_\_\_\_\_ days to acquire fixed properties.

सीम प , साम

\_\_\_\_\_ ।

- a) 7
- b) 14
- c) 21
- d) 28

Correct Answer :-28

14. If a vertical circular plate of diameter 'd' is submerged in water, what is the depth of centre of pressure from the water surface?

स 'd' प , पान सतह से ?

- a)  $d/2$
- b)  $3d/5$
- c)  $5d/8$
- d)  $4d/7$

Correct Answer :-  $5d/8$

15. If  $e$  represents the void ratio of the soil and  $G$  is its specific gravity, the critical gradient is:-

$e$  नुपात और  $G$  उसक , \_\_\_\_\_

।

- a)  $G+1/1-e$
- b)  $G+1/1+e$
- c)  $G-1/1-e$
- d)  $G-1/1+e$

Correct Answer :-  $G-1/1+e$

16. Capillary action is due to:-

\_\_\_\_\_ है।

- a) Adhesion / आसंज
- b) Cohesion / संश
- c) Adhesion and cohesion both / आसंज    संश
- d) Neither adhesion nor cohesion /    आसंजन और    संश

Correct Answer :- Adhesion and cohesion both / आसंज    संश

17. The magnitude of Earth pressure at rest is generally \_\_\_\_\_ than limiting active pressure and \_\_\_\_\_ than passive pressure.

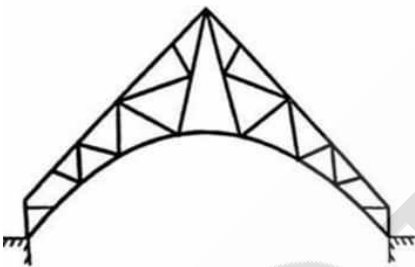
पर पृष्ठ                      साम                      से \_\_\_\_\_ और पैसिव दाब से \_\_\_\_\_ ।

- a) higher, higher / ,
- b) lower, lower / ,
- c) higher, lower / ,
- d) lower, higher / ,

Correct Answer :- higher, lower / ,

18. The following figure represents:-

आ                      ?



- a) Vaulted Ceiling Truss / सीलि ट्रेस
- b) Bow String Truss / ट्रेस
- c) Arched Truss / आर्चड ट्रेस
- d) Cannot be determined / सक

Correct Answer :- Vaulted Ceiling Truss / सीलि ट्रेस

19. The shearing strength of the soil is due to:-

- i. Cohesion
- ii. Structural resistance
- iii. Internal friction

Which of these is/are NOT correct?

साम

- i. सं
- ii. सं
- iii. आ

- a) Only i / स i
- b) Only iii / स iii
- c) ii and iii / ii iii
- d) None of the above /

Correct Answer :- None of the above /

20. Height of collimation method is \_\_\_\_\_ and \_\_\_\_\_ labour is required as compared to Rise and fall method.

आ \_\_\_\_\_ ।

- a) rapid, more / ,
- b) rapid, less / ,
- c) slow, less / ,
- d) slow, more / ,

Correct Answer :- rapid, less / ,

21. In design of a fillet weld, size of weld for rounded toe of rolled section must not be more than \_\_\_\_\_ of the thickness of the toe.

\_\_\_\_\_ , सिरे का आक \_\_\_\_\_ स \_\_\_\_\_ से ।

- a) 1/4
- b) 1/2
- c) 3/4
- d) 5/4

Correct Answer :- 3/4

22. In surveying, a 20 m chain contains:-

स \_\_\_\_\_ , 20 m \_\_\_\_\_ ।

- a) 50 links / 50
- b) 100 links / 100
- c) 150 links / 150
- d) 250 links / 250

Correct Answer :- 100 links / 100

23. With respect to temperature, viscosity of liquids:-

\_\_\_\_\_ से \_\_\_\_\_ :-

- a) Increase /
- b) Decrease /
- c) May increase or decrease /
- d) Remains unchanged / अपरि

Correct Answer :- Decrease /

24. Number of arithmetical checks in Rise and Fall method is:-

सम् स :-

- a) 1
- b) 2
- c) 3
- d) 4

Correct Answer :-2

25. In Surveyor's compass, the graduated ring is attached to the:-

सर्व म्पास में, \_\_\_\_\_ से संलग्न ।

- a) Box / बॉक्स
- b) Needle /
- c) Sight vane / साई
- d) Jewel bearing /

Correct Answer :- Box / बॉक्स

26. If L represents the staff reading and 'x' as the angle of inclination, error due to non-verticality of the staff will be:-

L और 'x' , से उत्पन्न ।

- a)  $L(\sin x - 1)$
- b)  $L(\tan x - 1)$
- c)  $L(\sec x - 1)$
- d)  $L(\operatorname{cosec} x - 1)$

Correct Answer :-  $L(\sec x - 1)$

27. Reinforced concrete footing is recommended where bearing capacity of the soil is:-

\_\_\_\_\_, स ।

- a) Low /
- b) Moderate /
- c) High /
- d) Very high /

Correct Answer :- Low /

28. In hard wood, annual rings are:-

, :-

- a) Clearly visible and nearer to each other / दूसरे के आसपास एवं स्पष्ट
- b) Less distinct and far apart / दूसरे से स्पष्ट
- c) Clearly visible and far apart / दूसरे से स्पष्ट
- d) Less distinct and nearer to each other / दूसरे के आसपास स्पष्ट

Correct Answer :- Clearly visible and far apart / दूसरे से स्पष्ट

29. Which of the following is the longest?

से सबसे ?



- a) Base line / बेस
- b) Tie line /
- c) Check line /
- d) Both Base and Tie line / बेस

Correct Answer :- Base line / बेस

30. Decrease in volume of soil mass under stress is called:-

आय आ \_\_\_\_\_ ।

- a) Compaction / संघ
- b) Compressibility / संपीड
- c) Consolidation / सम
- d) Contraction / संक

Correct Answer :- Compaction / संघ

31. Due to excessive pressure of the retained soil, the retaining wall will tend to move:-

, \_\_\_\_\_ से ।

- a) Away from the backfill / से
- b) Towards the backfill /
- c) Nowhere /
- d) At its own position i.e. vibration / अपन पर म्पन

Correct Answer :- Away from the backfill / से

32. A bending moment causing concavity upward will be taken as \_\_\_\_\_ and called \_\_\_\_\_ bending moment.

ऐसी जिस ऊपर की ओर , से \_\_\_\_\_ से \_\_\_\_\_

- a) positive, sagging / , सैगि
- b) positive, hogging / ,
- c) negative, sagging / , सैगि
- d) negative, hogging / ,

Correct Answer :- positive, sagging / , सैगि

33. The consumptive use coefficient for crops like wheat, barley, flax and other small grains is approximately:-

, ९, लेक्स जैसी फसलों प :-

- a) 0.6
- b) 0.66
- c) 0.9
- d) 1.1

Correct Answer :- 0.9

34. For a body submerged in water, metacentric height for rolling condition will be \_\_\_\_\_ etacentric height for pitching condition.

प

सैट्रिक ऊंचाई पिचि

सैट्रिक ऊंचाई से \_\_\_\_\_

|

- a) less than /
- b) more than /
- c) equal to /
- d) unrelated to / संब

Correct Answer: - less than /

35. The magnitude of dip at the equator is:-

पर डिप \_\_\_\_\_ |

- a)  $0^\circ$
- b)  $22.50^\circ$
- c)  $90^\circ$
- d)  $180^\circ$

Correct Answer: -  $0^\circ$

36. Frog is provided onto the bricks to:-

- i. indicate the manufacturer's name
- ii. provide a key for mortar

Correct among these is/are correct?

पर

- i. प
- ii. "की"

से/सा सह

- a) Only i / स i
- b) Only ii / स ii
- c) Both i and ii / i और ii
- d) Neither i nor ii / i और ii

Correct Answer: - Both i and ii / i और ii

37. Rivet joint is:-

\_\_\_\_\_ |

- a) A lap joint / लैप
- b) A butt joint /
- c) Lap and butt joint both / लैप और
- d) Neither lap nor a butt joint / लैप और

Correct Answer: - A butt joint /

38. When the flow is such that one third of the static head is consumed in pipe friction, the power delivered by the given pipeline will be:-

इस स्से की खपत पाइप \_\_\_\_\_ , पाइप से  
स \_\_\_\_\_ |

- a) Zero /
- b) Unity /
- c) Same as always / जैसा
- d) Maximum /

Correct Answer: - Maximum /

39. A good malleable material possess \_\_\_\_\_.  
आघ प \_\_\_\_\_ ।

- a) low degree of plasticity / सिट
- b) high degree of plasticity / सिट
- c) necessarily great strength / रूप से उच्च साम
- d) necessarily high degree of ductility /

Correct Answer: - high degree of plasticity / सिट

40. As compared to high rate filter, standard rate filter requires \_\_\_\_\_ land area.  
, आ \_\_\_\_\_ ।

- a) more /
- b) less /
- c) equal / सम
- d) no /

Correct Answer: - more /

41. Piezometer is suitable for fluid related measurements which are \_\_\_\_\_.  
पीज़ पद मापन प :-

- a) small and positive /
- b) small and negative /
- c) large and positive /
- d) large and negative /

Correct Answer: - small and positive /

42. A RCC column is said to be short if length to diameter ratio is:-  
आरसीसी उसक से व्यास प \_\_\_\_\_ ।

- a) Less than 50 / 50 से
- b) Less than 30 / 30 से
- c) Less than 25 / 25 से
- d) Less than 15 / 15 से

Correct Answer: - Less than 15 / 15 से

43. If B is the width of footing, W is the load per metre and P is the safe bearing capacity of the soil, then the correct relation amongst them will be:-

स B, L और स P है, सही सम्

\_\_\_\_\_ है।

- a)  $W = B/P$
- b)  $B = W/P$
- c)  $P = WB$
- d)  $B = WP$

Correct Answer: -  $B = W/P$

44. For increasing the inflow of water to sub surface water reservoir:-

उप सत

- a) Intensity of the irrigation is reduced / सिंचाई
- b) Intercepting drains are constructed /
- c) Lining of canals is done /
- d) Natural drainage of the area is improved /

स को सुध

Correct Answer: - Natural drainage of the area is improved /

स को सुध

45. Convective precipitation is caused due to:-

- i. Upward movement of air warmer than its surroundings
- ii. Air striking mountains

Which of these is/are correct?

स :-

- i. से ऊपर
- ii. पर्वतो से

से कौन से/सा सह ?

- a) Only i / स i
- b) Only ii / स ii
- c) Both of the above / i और ii
- d) Neither i nor ii / i और ii

Correct Answer: - Only i / स i

46. For laminar flow, Kinetic energy correction factor is:-

ऊर्जा सुध

- a) 1
- b) 1.33
- c) 2
- d) 2.7

Correct Answer: - 2

47. If the difference in the reduced levels of the end points is H, slope correction for a slope distance 'l' will be

'H' है,

'l' स

।

- a)  $H/l$
- b)  $H/2l$
- c)  $H^2/l$
- d)  $H^2/2l$

Correct Answer: -  $H^2/2l$

48. About \_\_\_\_\_ of the total storage of the reservoir is assumed to be the dead storage in a dam reservoir.

- a) 10-12%
- b) 20-25%
- c) 25-35%
- d) 0-5%

Correct Answer: - 20-25%

49. Production of incrustation and sediment deposits are found in:-

पपड़ पद प पाय

- a) Acidic water /
- b) Alkaline water /
- c) Acidic and alkaline water both /
- d) Neither acidic nor alkaline water /

Correct Answer: - Alkaline water /

50. When a bar of length  $L$  at temperature  $T$  under load is free to expand, thermal stress generated is equal to:-

स  $L, T$  पमान पर , ऊ :-

- a)  $LT$
- b)  $\alpha T$
- c)  $L\alpha T$
- d) Zero /

Correct Answer: - Zero /

51. If  $P$  is the population (in thousands) of a city exceeding 50000, what will be the water requirement (in Kilo litres)?

किसी स  $P$  ( ) 50000 से , पान आ ?

- a)  $100P$
- b)  $100P^2$
- c)  $100VP$
- d)  $75VP$

Correct Answer: -  $100VP$

52. The foundation whose length is considerable greater than its width is:-

ऐसा जिसक उसक से , ।

- a) Footing /
- b) Combined footing /
- c) Strip foundation / ट्रप
- d) Raft foundation /

Correct Answer: - Raft foundation /

53. For a given discharge through an orifice meter, the magnitude of Coefficient of discharge lies between:-

ओरिफिस मीटर से , ।

- a) 0.51-0.65
- b) 0.64-0.76

c) 0.76-0.85

d) 0.86-0.98

Correct Answer: - 0.64-0.76

54. In which of the following levels, the telescope is supported by rigid sockets at the either ends?

से किस लेप पर ठोस सॉकेट से सम ?

a) Dumpy level / म्पी

b) Wye level /

c) Reversible level / वर्सेब

d) Titling levels /

Correct Answer: - Reversible level / वर्सेब

55. Both the end stations are free from local attraction if the difference between fore and back bearing of a line is:-

किसी और \_\_\_\_\_ , आकर्षण से

a)  $0^\circ$

b)  $90^\circ$

c)  $180^\circ$

d)  $270^\circ$

Correct Answer: -  $180^\circ$

56. If 'd' is the gross diameter, minimum pitch of a riveted joint must be:-

'd' सक स , प \_\_\_\_\_ ।

a) 1.5 d

b) 2.5d

c) 3.5d

d) 4d

Correct Answer: - 2.5d

57. In the graphical method of obtaining flow nets, if the lowest flow line conforms to the bottom boundary conditions, the flow net :-

, सबसे , परि साथ

\_\_\_\_\_ ।

a) Is correct / सह

b) Needs a small adjustment / सुध आवश

c) Needs a bigger adjustment / सुध आवश

d) Can't be corrected / सुध सक

Correct Answer: - Is correct / सह

58. When temperature increases, viscosity of the soil \_\_\_\_\_ whereas its permeability \_\_\_\_\_.

वक्र स , \_\_\_\_\_ उसकी पार \_\_\_\_\_ है।

a) increases, increases / ,

b) increases, decreases / ,

c) decreases, increases / ,

d) decreases, decreases / ,

Correct Answer:- decreases, increases / ,

59. According to Transit rule, correction to latitude of a line should be proportional to the:-

स , स \_\_\_\_\_ प ।

a) Length of transverse leg / वर्स

b) Departure / डिपाच

c) Sum of departure and length of transverse leg / डिपाच वर्स

d) Product of departure and length of transverse leg / डिपाच वर्स

Correct Answer:- Departure / डिपाच

60. Which of the following theory over estimates the elastic strength of ductile material ?

से कौनसा सिद्ध किसी पद स ?

a) Distortion energy theory / विरूपण ऊज सिद्ध

b) Haigh's theory / सिद्ध

c) Maximum principal strain theory / किसम सिपल

d) Maximum principal stress theory / किसम सिपल स्ट्रेस

Correct Answer:- Maximum principal strain theory / किसम सिपल

61. Which of the following foundation is used to transfer the heavy structural loads from columns to soils having low bearing capacity?

से कौनसा , से उच्च संर प ?

a) Inverted arc footing / आक

b) Cantilever footing /

c) Grillage footing /

d) Combined footing /

Correct Answer:- Grillage footing /

62. For perfectly dry soil, degree of saturation is:-

पूर्णतः सूख , स \_\_\_\_\_ है।

a) Zero /

b) 0-1

c) 1

d) Infinite /

Correct Answer:- Zero /

63. In the vane shear test of soil, the length of vane is usually kept equal to \_\_\_\_\_ its overall width.

प , साम उसक से \_\_\_\_\_ ।

a) half / आधी

b) one-fourth /

c) double /

d) four times /

Correct Answer:- double /

64. Polar moment of inertia of a solid circular shaft of diameter 'd' is:-

'd' यास के ठोस प \_\_\_\_\_ ।

- a)  $\pi d/4$
- b)  $\pi d/64$
- c)  $\pi d^4/32$
- d)  $\pi d^4/64$

Correct Answer:-  $\pi d^4/32$

65. At hinge, bending moment will be:-

प , \_\_\_\_\_ ।

- a) Zero /
- b) Low /
- c) Moderate / साम
- d) Maximum /

Correct Answer:- Zero /

66. In the design of Doubly Reinforced Beams, if actual neutral axis is greater than critical neutral axis, the section is:-

स , स , स :-

- a) Balanced / संत
- b) Balanced or over reinforced / संत र्सड
- c) Over reinforced / र्सड
- d) Under reinforced / र्सड

Correct Answer:- Over reinforced / र्सड

67. A single acting steam hammer weighing 2000 kg and falling through a height of 2 m drives a pile an average penetration of 0.5 cm under the last few blows. What will be the allowable load (in tonnes) for the pile?

2000 kg 2 m ऊंचाई से अपने पिछ आघ पाइ औसत 0.5

। प ( ) ?

- a) 40
- b) 80
- c) 88.88
- d) 92.44

Correct Answer:- 88.88

68. The curing time in cast-in-situ concrete piles is:-

सित पाइल्स स \_\_\_\_\_

- a) Less /
- b) Moderate /
- c) High /
- d) Very high /



Correct Answer: - High /

69. The minimum pressure exerted by the soil on the retaining wall is known as:-

प \_\_\_\_\_ ।

- a) Seepage pressure / सीपेज
- b) Passive Earth pressure / पैसिव
- c) Active Earth pressure /
- d) Earth pressure at rest /

Correct Answer :-Earth pressure at rest /

70. English bonds used in bricks is:-

\_\_\_\_\_ ।

- a) Very cheap / सस्
- b) Costly /
- c) Economical /
- d) Cheap as well as costly / और सस्

Correct Answer :-Costly /

71. In a venturimeter, to avoid flow separation, angle of divergence should not be greater than:-

, से 3° से \_\_\_\_\_ से ।

- a) 3°
- b) 7°
- c) 12°
- d) 20°

Correct Answer :- 7°

72. In context with Water Supply, working head is generally taken as \_\_\_\_\_ of the critical depression head.

आपूर्ति के सापेक्ष , \_\_\_\_\_ ।

- a) three times /
- b) one-third /
- c) two times /
- d) half / आधा

Correct Answer :- one-third /

73. If 'R' is the radius of the circle, so for a 20 m arc, the degree of a circular curve is:-

स 'r' है, 20 m प 3° प \_\_\_\_\_ :-

- a) 1718.9/R
- b) 2019/R
- c) 1145.4/R
- d) 1765.9/R

Correct Answer :- 1145.4/R

74. Because of large stream discharge, \_\_\_\_\_ irrigation is more suitable for permeable soil.  
, प \_\_\_\_\_ सिंचाई प ।

- a) Free flooding /
- b) Check flooding /
- c) Check basin / बेसिन
- d) Furrow /

Correct Answer :- Check flooding /

75. If a thin cylinder is subjected to a fluid pressure of  $0.2 \text{ N/mm}^2$  whose thickness is 5 mm and diameter is 20 mm. What is the magnitude of Hoop stress generated in it?

पत स 5 mm और व्यास 20 mm है,  $0.2 \text{ N/mm}^2$  है, उसमें उत्पन्न हूप ?

- a)  $0.2 \text{ N/mm}^2$
- b)  $0.4 \text{ N/mm}^2$
- c)  $1.4 \text{ N/mm}^2$
- d)  $0.8 \text{ N/mm}^2$

Correct Answer :-  $0.8 \text{ N/mm}^2$

76. Pneumatic tyred rollers are used for compaction of \_\_\_\_\_ soil of low plasticity.

स \_\_\_\_\_ ।

- a) sandy / सैंड
- b) loamy /
- c) silty / सिल्ट
- d) plastic /

Correct Answer :- silty / सिल्ट

77. The resistance offered to slipping of steel bars from concrete is due to:-

- i. Pure adhesion
- ii. Frictional resistance
- iii. Mechanical resistance

Which of these is/are correct?

से खिसक प :-

- i. आसं
- ii.
- iii.

से/सा सह ?

- a) only i / स i
- b) ii and iii / ii iii
- c) i and iii / i ii
- d) i, ii and iii / i, ii iii

Correct Answer:- i, ii and iii / i, ii iii

78. For basic requirements of water supply, drainage and sanitation, as per the IS code, what is the domestic water demand in Indian cities and towns?

आपूर्ति, निकासी आ , IS स ,  
?

- a) 135 litres per head/day / 135 /
- b) 200 litres per head/day / 200 /
- c) 240 litres per head/day / 240 /
- d) 340 litres per head/day / 340 /

Correct Answer:- 200 litres per head/day / 200 /

79. In Marcus's method of designing two way slabs, thickness of slab is generally taken to be \_\_\_\_\_ of shorter span.

स , पाट की साम \_\_\_\_\_ ।

- a) 1/10
- b) 1/20
- c) 1/30
- d) 1/40

Correct Answer:- 1/30

80. Deflection of beams in pre-stressed concrete structures w.r.t. RCC structures is:-

पूर्व आरसीसी \_\_\_\_\_ ।

- a) Equal /
- b) Less /
- c) More /
- d) Less or more /

Correct Answer:- Less /

81. With tuberculation of the pipes, roughness of the pipes \_\_\_\_\_ and carrying capacity of the pipes

पाइप साथ पाइप प \_\_\_\_\_ औ \_\_\_\_\_ है।

- a) increases, increases / ,
- b) increases, decreases / ,
- c) decreases, increases / ,
- d) decreases, decreases / ,

Correct Answer:- increases, decreases / ,

82. Which of the following irrigation technique is preferred where area has a irregular topography with excessive slope?

से और रूप नैसी सिंचाई ?

- a) Sprinkler Irrigation / सिंचाई
- b) Sub-surface Irrigation / सब सरफेस सिंचाई

c) Furrow Irrigation / सिंचाई

d) Border Irrigation / सिंचाई

Correct Answer:- Sprinkler Irrigation / सिंच

83. If the porosity of a soil mass is 0.5, its void ratio will be:-

किसी स 0.5 है, उसका प \_\_\_\_\_ ।

a) 0.2

b) 0.33

c) 0.5

d) 0.71

Correct Answer:- 0.5

84. If 'd' is the diameter of a bubble and 's' represents the surface tension, what is the pressure inside the bubble?

किसी स 'd' और 's' प , तन्ना आत

a)  $4s/d$

b)  $4d/s$

c)  $4s/3d$

d)  $8s/d$

Correct Answer:-  $8s/d$

85. The centre of adjacent rivets in the same row are separated by a distance known as:-

समीपव \_\_\_\_\_ ।

a) Edge distance /

b) Lap / लैप

c) Pitch / पिच

d) Gauge distance /

Correct Answer:- Pitch / पिच

86. Presence of \_\_\_\_\_ in water enhances the process of leaching.

\_\_\_\_\_ प \_\_\_\_\_ ।

a) Nitrogen /

b) Carbon-di-oxide / - - स

c) Sulphur / सल्

d) Sulphur-di-oxide / सल् स

Correct Answer:- Carbon-di-oxide / - - स

87. Hydraulic pump will start pumping only when pressure head is \_\_\_\_\_ manometric head.

पंप सिफ पम्पिंग \_\_\_\_\_ ।

a) equal to /

b) greater than / से

c) lower than / से

d) greater than or equal to /

Correct Answer:- greater than or equal to /

88. Which of the following is not a brittle material?

से प ?

- a) Copper /
- b) Cast iron /
- c) Concrete /
- d) Glass /

Correct Answer: - Copper /

89. How many horizontal web members are there in Compound fink truss?

कंपाउंड ट्रस स ?

- a) 1
- b) 2
- c) 3
- d) 4

Correct Answer: - 2

90. For the construction of domes:-

:-

- a) Heavier stones are preferred / पत्
- b) Lighter stones are preferred / पत्
- c) Stones are not preferred / पत्
- d) Both lighter and heavier stones are preferred / पत्

Correct Answer: - Lighter stones are preferred / पत्

91. If an incompressible fluid enters a pipe with a velocity of 4 cm/s and moves out with a velocity of 2 cm/s, calculate the cross sectional area of the inlet if the diameter of the pipe at the outlet is 7 cm.

अपरि किसी पाइप 4 cm/s से औ 2 cm/s से , पाइप  
पाइप निकास स 7 cm है।

- a) 154 sq.cm.
- b) 77 sq.cm
- c) 14 sq.cm
- d) 7 sq.cm

Correct Answer: - 77 sq.cm

92. If the velocity of pressure wave generated is 2 m/s, the value of critical time is:-

प 2 m/s है, स \_\_\_\_\_ ।

- a) 2 s
- b) 4 s
- c) 1 s
- d) 0.5 s

Correct Answer: - 1 s

93. The articles prepared from refractory clays mixed with stone and crushed pottery are called:-

पत् पिसे पात्र स ?

- a) Tiles / ल्स

- b) Terra cotta /
- c) Porcelain / पोर्सिलेन
- d) Stonewares /

Correct Answer:- Stonewares /

94. Water hammer pressure can be considerably reduced using:-

- \_\_\_\_\_ स ।
- a) Slow closing valves /
  - b) Rapid closing valves /
  - c) Both slow and rapid closing valves /
  - d) None of the valves / कसी

Correct Answer:- Slow closing valves /

95. The tangent distance of a curve of radius 'r' deflected through an angle of 60 degrees will be:-

60 डिग्री के कोण से डिफ्लेक्टेड एक त्रिज्या 'r' वाले वक्र की टेंजेंट दूरी \_\_\_\_\_ होगी।

- a) r
- b)  $r\sqrt{3}$
- c)  $r/\sqrt{3}$
- d) Infinite

Correct Answer:-  $r/\sqrt{3}$

96. Zone of the soil affected by capillary action is:-

\_\_\_\_\_ से \_\_\_\_\_ से \_\_\_\_\_ ।

- a) Capillary fringe /
- b) Capillary zone /
- c) Capillary fringe or Capillary zone /
- d) Neither capillary fringe nor capillary zone / और पिलर

Correct Answer:- Capillary fringe or Capillary zone /

97. If the whole circle bearing of a line is  $150^\circ$ , its reduced bearing will be:-

\_\_\_\_\_ किसी सम्पूर्ण  $150^\circ$  है, स \_\_\_\_\_ ।

- a) S
- b) W
- c)  $S60^\circ E$
- d)  $S30^\circ E$

Correct Answer:-  $S30^\circ E$

98. On increasing the water-cement ratio, strength of cement paste:-

\_\_\_\_\_ प -स नुपा ँ पर सीमेंट पेस्ट \_\_\_\_\_ ।

- a) Increases /
- b) Decreases /
- c) May increase or decrease /

d) Doesn't change /

Correct Answer:- Decreases /

99. Contour maps cannot be used for:-

- i. Calculating water capacity of reservoirs
  - ii. Determining the catchment area of drainage basin
- Which of these is/are correct?

मैप स :-

- i. मापन
  - ii. स बेसि पत
- a) Only i / सर्फ i  
b) Only ii / सर्फ ii  
c) Both i and ii / i औ ii  
d) Neither i nor ii / न i ii

Correct Answer:- Neither i nor ii / न i ii

100. The central triangle is said to be equilateral if slope of simple fink truss is:-

साम स \_\_\_\_\_ , स |

- a) 30°
- b) 45°
- c) 60°
- d) 90°

Correct Answer:- 30°

101. Increase in capillary rise of water in soils depends upon:-

- i. Void ratio
- ii. Grain size

The correct amongst these is/are:-

- i. पात प
  - ii. आकार प
- से कौन सा/से स ?

- a) Only i / स i  
b) Only ii / स ii  
c) Both i and ii / i औ ii  
d) Neither i nor ii / i औ ii

Correct Answer:- Both i and ii / i औ ii

102. Plastic strain is generally \_\_\_\_\_ times the elastic strain.

- a) 2 to 4 / 2 से 4  
b) 5 to 10 / 5 से 10

c) 10 to 15 / 10 से 15

d) 20 to 25 / 20 से 25

Correct Answer:- 10 to 15 / 10 से 15

103. The safe limit of chloride content in public supplies is generally:-

पब्लिक सप्लाय सुरक्षित सीमा सामान्यतः \_\_\_\_\_ ।

a) 45 ppm

b) 115 ppm

c) 250 ppm

d) 375 ppm

Correct Answer:- 250 ppm

104. The obtained graph in Maximum Principal Strain theory is a/an:-

किस प्रकार का सिंपल \_\_\_\_\_ ।

a) Square /

b) Rhombus / सम

c) Hexagon /

d) Ellipse /

Correct Answer:- Rhombus / सम

105. Which of the following controls the entry of silt and prevent river floods from entering into the main canal?

से और आने से ?

a) Head Works /

b) Branch Canals /

c) Distributaries / बीस

d) Field Channels /

Correct Answer:- Head Works /

106. \_\_\_\_\_ support the masonry in opening of doors and windows.

\_\_\_\_\_ , खिड़कियाँ एवं दरवाजे को खोलने में चिनाई की मदद करते हैं।

a) Lintels /

b) Purlins / पुरलिन

c) Girder /

d) Rafters /

Correct Answer:- Lintels /

107. In the design of singly reinforced simply supported beams, the maximum bending moment will be (Given W is the maximum load and l is the length):-

सिंगली रीनफोर्स सिंपली सपोर्टेड बीम में, अधिकतम बेंडिंग मोमेंट होगा (जहाँ W अधिकतम लोड और l लंबाई है)।

a)  $Wl/64$

b)  $W/8l^2$



c)  $Wl^2/8$

d)  $Wl^2/32$

Correct Answer: -  $Wl^2/8$

108. Which of the following rock is extremely fine-grained in structure?

से कौनसी संर स ?

a) Basalt / बेसाल्ट

b) Granite /

c) Calcite / ल्साइ

d) Dolomite /

Correct Answer: - Basalt / बेसाल्ट

109. Ultimate load method of designing a RCC structure w.r.t. elastic theory method is:-

आरसीसी संर

a) More economical /

b) More costly /

c) Equal in cost / सम

d) Not comparable in costing /

Correct Answer: - More economical /

110. For single riveted joints, the expected efficiency of the steel pipe joints is approximately:-

स , पाइप आपेक्षि \_\_\_\_\_ ।

a) 0.47

b) 0.63

c) 0.75

d) 0.9

Correct Answer: - 0.63

111. Overall depth of T-beam for medium loading of continuous beams is assumed to be \_\_\_\_\_ of the total span.

T- पू प \_\_\_\_\_ ।

a) 1/12 to 1/15

b) 1/10 to 1/12

c) 1/15 to 1/20

d) 1/20 to 1/24

Correct Answer: - 1/12 to 1/15

112. The moment of resistance of a balanced reinforced section is obtained by multiplying the lever arm with:-

किसी संत से \_\_\_\_\_ ।

a) Compressive force /

b) Tensile force /

c) Either compressive or tensile force /

d) Compressive and tensile force both / और

Correct Answer: - Either compressive or tensile force /

113. At the free end of a shaft, angle of twist is:-

किसी सिरे पर, \_\_\_\_\_ ।

- a) Zero /
- b) Low /
- c) Moderate / साम
- d) Maximum /

Correct Answer:- Zero /

114. A clay which contains Kaolinite has an activity value of:-

ऐसी जिसमें काओलिमाई , स \_\_\_\_\_ ।

- a) 1
- b) 0
- c) 0.4
- d) 0.8

Correct Answer:- 0.4

115. At constant discharge, to increase the head, hydraulic pumps are:-

प , पम्पों :-

- a) Connected in series /
- b) Connected in parallel / सम
- c) Connected in series or parallel / सम
- d) Not connected /

Correct Answer:- Connected in series /

116. If at a place, the magnetic bearing of the sun at noon is  $182^{\circ}30'$ , the magnetic declination at that point will be:-

किसी प , दोपहर में सूर्य  $182^{\circ}30'$  है, उस बिंदु पर ?

- a)  $2^{\circ}15'$
- b)  $-2^{\circ}30'$
- c)  $2^{\circ}30'$
- d)  $3^{\circ}30'$

Correct Answer:-  $-2^{\circ}30'$

117. Which of the following is not a part of Prismatic compass?

से कंपास ?

- a) Lifting pin / पिन
- b) Objective vane /
- c) Spring brake /
- d) Rider /

Correct Answer:- Rider /

118. \_\_\_\_\_ are used for the pipes laid in rivers with uneven bed.

स \_\_\_\_\_ पाइप ।

- a) Mechanical joint /
- b) Flexible joint / क्सब
- c) Socket joint / सॉक
- d) Spigot joint / स्पाई

Correct Answer:- Flexible joint / लेक्सिब

119. If P is the weight of a prismatic bar and L is its length, what is the deflection of the bar due to self weight if AE is the Axial Rigidity:-

P स L है, से ( AE )?

- a) PL/AE
- b) 2PL/AE
- c) PL/8E
- d) PL/2AE

Correct Answer:- PL/2AE

120. In smooth pipes, if R represents Reynold's Number, Friction factor for turbulent flow is given by:-  
पाइप में, R स , ?

- a)  $0.64/R$
- b)  $64/R$
- c)  $0.316/R^{1/4}$
- d)  $0.316/R^{1/5}$

Correct Answer:-  $0.316/R^{1/4}$

121. Surface profile of a forced vortex flow is:-

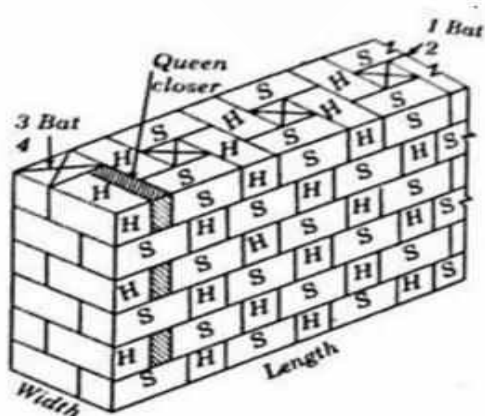
सरफेस \_\_\_\_\_ ।

- a) Straight line / सीधी
- b) Ellipse /
- c) Hyperbolic / इपर
- d) Parabolic / पर

Correct Answer:- Parabolic / पर

122. The following figure represents:-

आ :-



- a) Stretcher bond /
- b) Header bond /
- c) English bond /
- d) Flemish bond /

Correct Answer: - Flemish bond /

123. The pH of water used in concrete must not be less than:-

प pH \_\_\_\_\_ से ।]

- a) 7.4
- b) 7
- c) 6.6
- d) 6

Correct Answer: -6

124. The excess of silica \_\_\_\_\_ the cohesion between earth particles.

सिलिक \_\_\_\_\_ से \_\_\_\_\_ है।

- a) highly increases /
- b) slowly increases /
- c) does not affects /
- d) destroys /

Correct Answer: - destroys /

125. For 1<sup>st</sup> class bricks, the water absorption capacity should not be more than \_\_\_\_\_ of its weight.

1<sup>st</sup> लास पानी सोख \_\_\_\_\_ से ।

- a) 10%
- b) 20%
- c) 30%
- d) 40%

Correct Answer: - 20%

126. Excess of \_\_\_\_\_ is responsible for brick's decay.

\_\_\_\_\_ ।

- a) Magnesia /
- b) Alumina /
- c) Lime /
- d) Silica / सिलिक

Correct Answer: - Magnesia /

127. The least horizontal dimension of plain concrete pier should not be less than \_\_\_\_\_ of its height.

पिय \_\_\_\_\_ उसकी ऊंचाई \_\_\_\_\_ से ।

- a) 1/2
- b) 1/8
- c) 1/12
- d) 1/16

Correct Answer: -1/12

128. Radius of visible horizon from top of a 134 m light house will be:-

134 m ऊँचे तलस से \_\_\_\_\_ ।

- a) 44.62 km
- b) 54.5 km
- c) 87.44 km
- d) 89.67 km

Correct Answer: -44.62

129. Shear and bond stresses of Simply Supported slabs is usually:-

आलति ट्रेस साम \_\_\_\_\_ ।

- a) zero /
- b) very low /
- c) moderate / साम
- d) high /

Correct Answer:-very low /

130. Aqueducts are designed to carry \_\_\_\_\_ of full supply.

लसेतु पूर्ण सप \_\_\_\_\_

- a) 10%-25%
- b) 25%-50%
- c) 50%-75%
- d) 100%

Correct Answer:- 50%-75%

131. In \_\_\_\_\_ method of plane table surveying, maximum number of ground measurements are made.

स \_\_\_\_\_ सबसे प \_\_\_\_\_ ।

- a) Radiation /
- b) Intersection / रसेक
- c) Resection / रिसेक
- d) Traversing / तवर्सिंग

Correct Answer: - Radiation /

132. In a ductile material, post elastic strain is \_\_\_\_\_ .

प , प \_\_\_\_\_ ।

- a) 1%
- b) 2-3%
- c) 3-5%
- d) greater than 5% / 5% से

Correct Answer: - greater than 5% / 5% से

133. Yield of well will be \_\_\_\_\_ if permeability of the soil is more.

प , प \_\_\_\_\_ ।

- a) zero /
- b) less /

- c) more /
- d) uncertain /

Correct Answer:- more /

134. The most important salt that causes incrustation is:-

पर सबसे महत्वपूर्ण :-

- a) Calcium Carbonate /
- b) Sodium Chloride / सोडि
- c) Sodium Carbonate / सोडि
- d) Calcium Chloride /

Correct Answer:- Calcium Carbonate /

135. When a spring is cut into two parts, then for every individual part the stiffness becomes:-

स , से ( प ) \_\_\_\_\_

- a) Same / सम
- b) Double /
- c) Half / आधी
- d) Four times /

Correct Answer:- Double /

136. For laminar flow conditions in saturated soils, the rate of percolation is \_\_\_\_\_ the hydraulic gradient.

स , स \_\_\_\_\_ ।

- a) directly proportional to / नुपा
- b) inversely proportional to / नुपा
- c) directly proportional to the square of / नुपा
- d) inversely proportional to the square of / नुपा

Correct Answer:- directly proportional to / नुपा

137. The stone is said to be high if the toughness index of the stone in the impact test is:-

, सम प \_\_\_\_\_ ।

- a) Less than 9 / 9 से
- b) More than 9 / 9 से
- c) Less than 19 / 19 से
- d) More than 19 / 19 से

Correct Answer:- More than 19 / 19 से

138. Tacheometric distance formula,  $D = f \cdot s / l + (f + d)$  is applicable only when line of sight is \_\_\_\_\_ and staff is held truly .

,  $D = f \cdot s / l + (f + d)$ , \_\_\_\_\_ और प \_\_\_\_\_ हो।

- a) horizontal, horizontal / ,

- b) horizontal, vertical / ,  
 c) vertical, vertical / ,  
 d) vertical, horizontal / ,

Correct Answer: - horizontal, vertical / ,

139. \_\_\_\_\_ is only suitable for small bunds or thin arch dams.

\_\_\_\_\_ सिफ पतले आक प ।

- a) Straight Drop Spillway / टाप स्पिल  
 b) Ogee Spillway / स्पिल  
 c) Shaft Spillway / स्पिल  
 d) Side Channel Spillway / सा स्पिल

Correct Answer:- Straight Drop Spillway / टाप स्पिलव

140. Which of the following defects in timber is caused by growth of layers over wounds left after the branches been cut off?

\_\_\_\_\_ र्ऑँ ऊपर परत से प ?

- a) Rind-galls / गल्स  
 b) Rupture /  
 c) Twisted fibres /  
 d) Knots /

Correct Answer:- Rind-galls / गल्स

141. In determining the bearing capacity of piles, empirical factor C is assumed \_\_\_\_\_ for drop hammers.

पाइल्स प उ पे C प \_\_\_\_\_ ।

- a) 0.25  
 b) 1.5  
 c) 2.5  
 d) 3.5

Correct Answer:-2.5

142. Gauge pressure has \_\_\_\_\_ value.

- a) zero /  
 b) positive /  
 c) negative /  
 d) zero, positive or negative / ,

Correct Answer: - zero, positive or negative / ,

143. Number of independent elastic constant for orthotropic materials such as wood is:-

जैसे ओर्थोट्रोपिक पद स \_\_\_\_\_ ।

- a) 2  
 b) 9

c) 14

d) 21

Correct Answer: -9

144. Water is termed as sweet, if the value of TDS is less than:-

स \_\_\_\_\_ से , उस पान ।

a) 1000

b) 1500

c) 2000

d) 3000

Correct Answer: -1000

145. The chemical name of calcite is:-

ल्साइ स \_\_\_\_\_ ।

a) Calcium Carbonate /

b) Calcium Chloride /

c) Calcium Fluoride /

d) Calcium Sulphate / सल्फ

Correct Answer: - Calcium Carbonate /

146. Vorticity of a fluid is equal to:-

किसी स :-

a) Rotational component /

b) Half the rotational component / आधा

c) Double the rotational component /

d) One fourth the rotational component /

Correct Answer: - Double the rotational component /

147. Due to water logging of an area:-

स :-

a) Soil temperature falls / ापक

b) Salt content decreases /

c) Carrying out cultivation operations becomes easier / आसन

d) Decrease in wild vegetation is observed / स्पति

Correct Answer: - Soil temperature falls / ापक

148. The unit of strain is \_\_\_\_\_ .

\_\_\_\_\_ ।

a) m

b)  $m^2$

c)  $m^{-1}$

d) strain is dimensionless /

Correct Answer: - strain is dimensionless /



149. In Unconfined compression test of a soil, it is assumed that \_\_\_\_\_ moisture is lost.

प , , \_\_\_\_\_ ।

- a) no /
- b) 30%
- c) 70%
- d) 100%

Correct Answer:- no /

150. Pelton Wheel turbine is:-

पे \_\_\_\_\_ है।

- a) High head high discharge turbine /
- b) High head low discharge turbine /
- c) Low head high discharge turbine /
- d) Low head low discharge turbine /

Correct Answer:- High head low discharge turbine /

### Non-Tech:-Reasoning

151. Find out the value of  $\log_{10}10 / \log_{10}10$

- a) 1
- b) 10
- c) 100
- d) 0

Correct Answer:- 1

152. Insert the correct number in order to complete the given series.

पूण \_\_\_\_\_ सही संख \_\_\_\_\_ ।

2, 6, 12,.....,30

- a) 14
- b) 16
- c) 18
- d) 20

Correct Answer:- 20

153. The sum of two numbers is 18. If their product is a prime number, the ratio of larger number to smaller is:-

संख्याओं \_\_\_\_\_ 18 है। \_\_\_\_\_ स \_\_\_\_\_ संख \_\_\_\_\_ संख्या से अनुपा \_\_\_\_\_ ?

- a) 13/5
- b) 4
- c) 17
- d) 1

Correct Answer:- 17

154. Identify the pair which is different from the other given pairs.

उस पत्त से |

1-8, 2-27, 3-81, 4-125

- a) 1-8
- b) 2-27
- c) 3-81
- d) 4-125

Correct answer:- 3-81

155. In this question, there is a certain relationship between two given numbers on one side of (: :) and one number is given on another side of (: :) while another number is to be found from the given alternatives, having the same relation with this number as the numbers of the given pair bear. Choose the correct alternative.

संख्याओं सम् औ (: :) दूसरी ओर  
स , इसी सम् ल्पों में से किसी प , सह ल्प

|  
63:7::72:?

- a) 6
- b) 7
- c) 8
- d) 5

Correct Answer:- 8

156. In this question, there is a certain relationship between two given numbers on one side of (: :) and one number is given on another side of (: :) while another number is to be found from the given alternatives, having the same relation with this number as the numbers of the given pair bear. Choose the correct alternative,

संख्याओं सम् औ (: :) दूसरी ओर  
स , इसी सम् ल्पों में से किसी प , सह ल्प

|  
36:42::?:6

- a) 1
- b) 2
- c) 3
- d) 6

Correct Answer:- 1

157. Introducing Tina to guests, Chirayu said, " Her mother is the only daughter-in-law of my father". How is Tina related to Chirayu?

से प , "उसक प " | से  
स ?

- a) Niece /
- b) Grand daughter / पोत
- c) Mother /
- d) Daughter /

Correct Answer:- Daughter /

158. What is the 11<sup>th</sup> term of a given series: 84,78,72,....

11 प :84,78,72,....

- a) 24
- b) 28
- c) 32
- d) 34

Correct Answer: -24

159. What will be the next term in the series?

प ?

ABDE, CDFG, EFGH, FGII ?

- a) ABDE
- b) CDFG
- c) EFGH
- d) FGII

Correct Answer: - EFGH

160. Find out the value of  $256/16+16 \times 16-16 / 256/16+16 \times 16-16$

$256/16+16 \times 16-16 / 256/16+16 \times 16-16$  |

- a) 256
- b) 16
- c) 234
- d) 240

Correct Answer: -256

161. AaroHi moved some distance towards South. She then took a right turn and moved 12 km ahead. She is 13 km from her initial position. How much distance she moved towards the North?

आर ओ . ओ 12 km आ . अपनी शुरुआत से 13 km प | ओ |

- a) 7 km
- b) 9 km
- c) 5 km
- d) 12 km

Correct Answer: - 5 km

162. If in a certain code, 6723 is coded as 8901, how is 2435 coded in that language?

स 6723 8901 , स 2435 स ?

- a) 2523
- b) 4623
- c) 2513
- d) 4613

Correct Answer: - 4613

163. What is the 5<sup>th</sup> term of the series: 6, 18,54,....

5 प :6, 18,54,....

- a) 81
- b) 182
- c) 243
- d) 486

Correct Answer: -486

164. If product of two numbers is 81, product of their LCM and HCF will be:-

संख्याओं 81 LCM HCF ?

- a) 3
- b) 27
- c) 9
- d) 81

Correct Answer:-81

165. Pointing towards a girl, Gitesh said, " She is the only daughter of my daughter-in-law". How is the girl related to Gitesh?

ओ , " " से क्या सम् ?

- a) Daughter /
- b) Niece /
- c) Sister /
- d) Grand daughter / पोत

Correct Answer:- Grand daughter / पोत

166. In this question, there is a certain relationship between two given numbers on one side of (: :) and one number is given on another side of (: :) while another number is to be found from the given alternatives, having the same relation with this number as the numbers of the given pair bear. Choose the correct alternative.

संख्याओं सम् औ (: :) दूसरी ओर  
स , इसी सम् लपों में से किसी प , सह लप  
|  
2:16::?:81

- a) 1
- b) 27
- c) 3
- d) 9

Correct Answer:-3

167. 625 is related to 24 in such a way that 169 is related to:-

625, 24 से उसी हुआ है जिस 169 \_\_\_\_\_ से आ ।

- a) 17
- b) 144
- c) 12
- d) 13

Correct Answer:-12

168. Insert the correct number at the place of question mark.

सही संख `|

3, 11, 31, ?, 131

- a) 108
- b) 69
- c) 86
- d) 97

Correct Answer:-69

169. Solve for x and y:  $2x+3y=31$ ;  $4x+3y=41$ . The value of y is:-

x y :  $2x+3y=31$ ;  $4x+3y=41$ . y ?

- a) 3
- b) 2
- c) 5
- d) 7

Correct Answer:-7

170. If in a certain code, PICK is coded as ICPK, how is SOAP written in that code:-

स PICK ICPK , स SOAP स |

- a) POAS
- b) SOAP
- c) OASP
- d) OSAP

Correct Answer:-OASP

### Non-Tech:-GK

171. Which of the following airport has recently been awarded as the best tourist friendly airport of India?

, किस सव पय पुर हुआ?

- a) Lucknow / नऊ
- b) Bhopal / भोपाल
- c) Tirupati / रुपति
- d) Bhubaneswar /

Correct Answer:-Tirupati / रुपति

172. According to NITI Aayog Index , which of following is most favourable state for farmers?

आयोग सूच स , से कौन सा किसान सबसे ?

- a) Andhra Pradesh / आंध्रप्र
- b) Rajasthan /
- c) Maharastra /
- d) Odhisa / ीसा

Correct Answer:- Maharastra /

173. Which Bollywood personality will be honoured with a Lifetime Achievement Award at the 2016 Dubai International Film Festival (DIFF)?

स / 2016 स (DIFF) पुर

से सम्

- a) Rekha /
- b) Dilip Kumar / लीप
- c) Amitabh bachchan /
- d) Jeetendra /

Correct Answer:- Rekha /

174. Arrange the following cities in ascending order starting from East to West of India: Tawang, Lumding, Kalimpong, Lalitpur, Alirajpur, Mehsana:-

पूव से पश्चिम ओर : , , प ,  
प , प , मेहसाना

- a) Tawang-Lumding-Kalimpong,-Lalitpur-Alirajpur-Mehsana / - - प - प - प -  
मेहसाना
- b) Lumding-Tawang-Kalimpong,-Lalitpur-Mehsana-Alirajpur / - - प - प - स -  
जपुर
- c) Kalimpong-Lumding-Tawang--Lalitpur-Mehsana-Alirajpur / प - - - प - स -  
जपुर
- d) Kalimpong-Tawang-Lumding-Lalitpur-Mehsana-Alirajpur / प - - - प - - स -  
जपुर

Correct Answer:- Tawang-Lumding-Kalimpong,-Lalitpur-Alirajpur-Mehsana / - - प - प -  
प - स

175. BRICS Summit 2016 took place at:-

ब्रिक्स सम्म 2016 आ ?

- a) Bangaluru /  
b) Goa /  
c) Raipur / यपुर  
d) Lucknow / लखनऊ

Correct Answer:- Goa /

176. India recently defeated \_\_\_\_\_ to win the Asia's Hockey Champions trophy.

, \_\_\_\_\_ पर पियंस |

- a) China /  
b) Pakistan / पाकि  
c) South Korea /  
d) Bangladesh /

Correct Answer:- Pakistan / पाकि

177. Recently, which cricketer became the fastest to complete 7500 runs in ODI cricket?

, वसीय सबसे 7500 ?

- a) Hashim Amla /  
b) Virat Kohli /  
c) Kane Williamson / मसन  
d) Rohit Sharma /

Correct Answer:- Virat Kohli /

178. Noble Prize 2016 for Peace has been won by President of:-

पुर किस प ?

- a) Columbia /
- b) Kenya /
- c) South Africa /
- d) Sudan / सूड

Correct Answer: - Columbia /

179. The 12<sup>th</sup> edition of International Oil and Gas Conference and Exhibition "Petrotech-2016" will be held at

गैस सम्म और 12 स "प -2016" आ |

- a) Tehran /
- b) Dubai /
- c) New Delhi /
- d) Kabul /

Correct Answer: - New Delhi /

180. LinkedIn has signed an MoU with which union ministry of India to create jobs for students?

किस स , वसर पैद से सम् अपन प ?

- a) Ministry of Skill Development and Entrepreneurship / स
- b) Ministry of Home Affairs /
- c) Ministry of Women and Child Development / स
- d) Ministry of Human Resource Development / संसाधन स

Correct Answer: - Ministry of Human Resource Development / संसाधन स

181. Which of the following gases is mainly responsible for acid rain?

से नैसी गैस रूप से ?

- a) Nitrogen /
- b) Carbon di oxide / कसाइ
- c) Sulphur di oxide / सल्फ कसाइ
- d) Hydrogen sulphide / सल्फ

Correct Answer: - Sulphur di oxide / सल्फ कसाइ

182. Indus Water Treaty between India and Pakistan was signed in the year:-

और पाकि सिंध संधि किस ?

- a) 1947
- b) 1960
- c) 1967
- d) 1999

Correct Answer: -1960

183. "Aware and Care" the health awareness campaign has been launched by which state government?

" और " , किस राज्य सर ?

- a) Madhya Pradesh /
- b) Chhattisgarh / छीसगढ़
- c) Punjab / पंज
- d) Uttar Pradesh /

Correct Answer: - Punjab / पंज

184. Who is the Union Minister of India for Information and Broadcasting?

सूच स ?

- a) M.Venkaiah Naidu /
- b) Prakash Javdekar /
- c) Ravishankar Prasad / प्रसाद
- d) Arun Jaitley /

Correct Answer: - M.Venkaiah Naidu /

185. "The World Diabetes Day" is observed every year on \_\_\_\_\_.

" वस" साल

- a) October 12 / 12
- b) November 4 / 4
- c) November 14 / 14
- d) November 15 / 15

Correct Answer: - November 14 / 14

186. As per year Statistical Review of World Energy 2015, India is the \_\_\_\_\_ largest producer of coal in the world.

ऊर्जा सांखि स 2015 स , \_\_\_\_\_ सबसे प |

- a) 1<sup>st</sup> / पह
- b) 4<sup>th</sup> /
- c) 6<sup>th</sup> /
- d) 8<sup>th</sup> / आठ

Correct Answer: - 4<sup>th</sup> /

187. Which of the following agricultural revolutions in India was focused on the technological changes in the meat and poultry processing sector?

, सा मांस और पोल्ट्री प्रसंर परि प ?

- a) Blue Revolution /
- b) Yellow Revolution / पील
- c) Pink Revolution /
- d) White Revolution / सफ़

Correct Answer: - Pink Revolution /



188. Number of total recognized languages in India is:-

।ओं की संख \_\_\_\_\_ है।

- a) 26
- b) 22
- c) 28
- d) 29

Correct Answer:-22

189. The Birth anniversary of Sardar Vallabh Bhai Patel is observed on:-

सर पट स ?

- a) October 31 / 31
- b) November 1 / 1
- c) November 2 / 2
- d) November 4 / 4

Correct Answer:- October 31 / 31

190. India's first indigenous electric bus has been manufactured by:-

पह बस किसक

- a) Mahindra /
- b) Ashok Leyland /
- c) Force motors / ोर्स मोटर्स
- d) Tata /

Correct Answer:- Ashok Leyland /

Non-Tech:-

191. " " स - |

- a) +
- b) .: +
- c) स +
- d) +

Correct Answer:- .: +

192. स सं से किसी , , आ , से \_\_\_\_\_ |

- a) सं
- b) सं
- c) सं
- d) स सं

Correct Answer:- सं

193. आ \_\_\_\_\_ |

- a)
- b)
- c)
- d)

Correct Answer:-

194. से प |
- a) प स , अपन
  - b) प स , अपन
  - c) प स , अपन
  - d) प स , अपन

Correct Answer:- पय स , अपन

195. "आ " स \_\_\_\_\_ है।
- a)
  - b)
  - c)
  - d)

Correct Answer:-

196. स -स ,  
- सा ऊँ जिसक
- उपय पंक्ति स ?
- a) स
  - b)
  - c) प
  - d) प

Correct Answer:- उपम

197. से " प " प ?
- a) सु
  - b)
  - c) स
  - d) प

Correct Answer:- सुध

198. ' ' -सी सं |
- a)
  - b)

c)

d) स

Correct Answer:- विसर्ग

199. विपर से |

a) -

b) प - आलस

c) -

d) -

Correct Answer:- -

200. से |

a) आ

b) आकास

c) आ

d) आक्सि

Correct Answer:- आक

